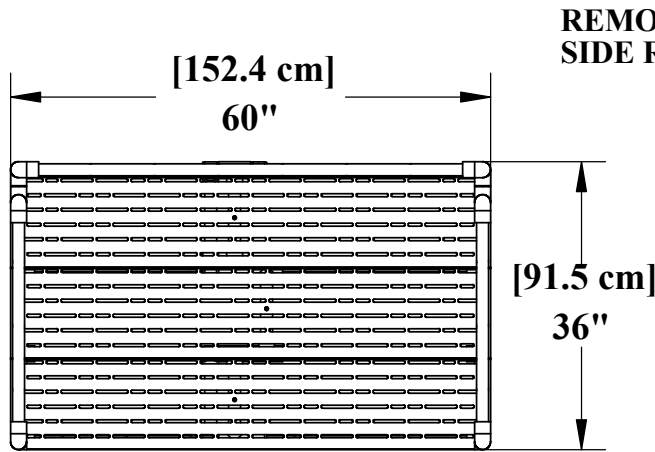
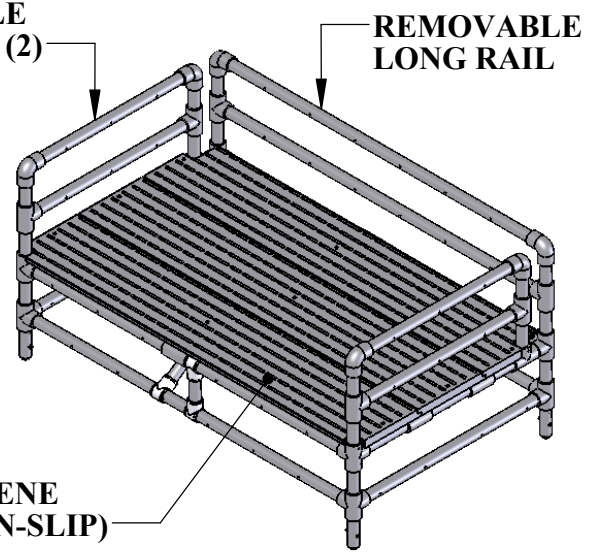


SWIM TRAINING PLATFORM

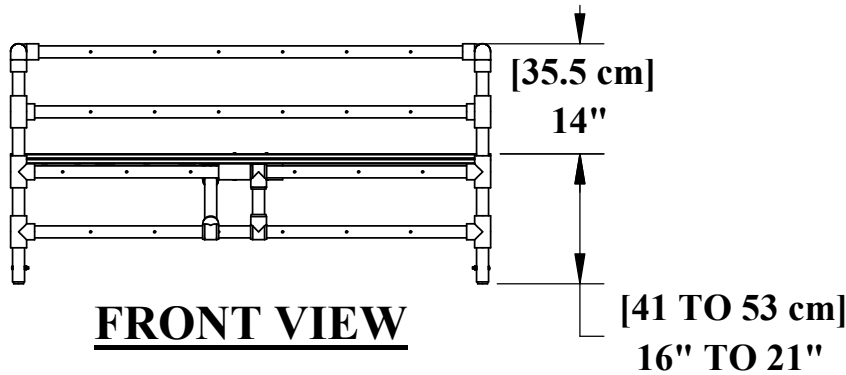


TOP VIEW

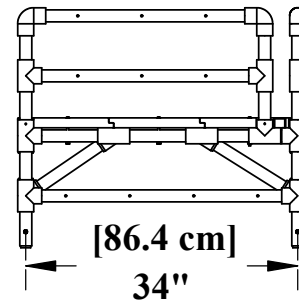


POLYPROPYLENE DECKING (NON-SLIP)

ISO VIEW



FRONT VIEW

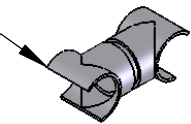


SIDE VIEW

SPECIFICATIONS:

THE AQUA CREEK SWIM TRAINING PLATFORM SHALL BE CONSTRUCTED FROM ϕ 1-1/2" O.D. [ϕ 3.8cm] PVC PIPE AND STAINLESS STEEL HARDWARE. THE SWIM TRAINING PLATFORM SHALL HAVE A WEIGHT LIMIT OF 300 LBS [136 kg]. THE SWIM TRAINING PLATFORM SHALL HAVE FOUR (4) ADJUSTABLE FEET, ALLOWING THE DECK HEIGHT TO BE 16" [41cm], 18.5" [47cm] OR 21" [53cm]. THE DECK SHALL BE MADE OF PERFORATED POLYPROPYLENE DECKING WITH A NON-SLIP SURFACE. THE SWIM TRAINING PLATFORM SHALL INCLUDE TWO (2) FREE-SLIDING TEE'S WITH SNAP FITTING ENDS.

SNAP-FITTING END



- TUBING: 1.5" [3.8 cm] O.D. x .145" [3.7 mm] WALL PVC TUBING
- FITTINGS: SOLID PVC
- DECK BOLTS: 1/4" x 3" BUTTON HEAD CAP SCREWS, STAINLESS STEEL
- DECKING: 1-1/4" [3.2 cm] THK. PERFORATED POLYPROPYLENE W/NON-SLIP SURFACE



9889 GARRY MORE LANE
 MISSOULA, MT 59808
 (406) 549-0769
 FAX (406) 549-2602

NOTE:
 *SPECIFICATIONS ARE SUBJECT TO CHANGE WITHOUT NOTICE
 *ALL DIMENSIONS ARE IN INCHES

PRODUCT:	F-250TTP	
DWG #:	F-250TTP-1	
SCALE:	1:24	DATE: 1/11/10
DRAWN BY:	DS	REVISION: C