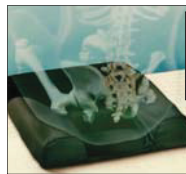


## Seating

Category: Treatment with Positioning



Contoured front for added positioning.  
Sleek, easy-open zippered cover.

### Isch-Dish®

The most direct seating solution for those with, or at high risk for pressure ulcers at the ischium or coccyx. Exclusive fit-to-the-user, open pocket design provides pressure elimination and ventilation at the ulcer site. An important complement to any wound treatment, and for long term prevention. Promotes healthy, upright posture by controlling pelvic tilt. Reduces "sacral sitting" that can cause skin breakdown. Includes support core protected by Durafilm™ incontinence-proof coating, machine washable cover, removable Sling-Fill seat base (see page 33), 2-year warranty. Height 3.5". Weight limit for standard models 250 lbs.

Medicare Code: Skin Protection and Positioning – E2607.

Item #	Description	Qty/Cs
221N	Small Pocket Narrow, 15"W x 15"L	1
221R	Small Pocket Regular, 16"W x 16"L	1
221L	Small Pocket Long, 16"W x 18"L	1
221W	Small Pocket Wide, 18"W x 16"L	1
221F	Small Pocket Full, 18"W x 18"L	1
222R	Medium Pocket Regular, 16"W x 16"L	1
222L	Medium Pocket Long, 16"W x 18"L	1
222W	Medium Pocket Wide, 18"W x 16"L	1
222F	Medium Pocket Full, 18"W x 18"L	1
223W	Large Pocket Wide, 18"W x 16"L	1
223F	Large Pocket Full, 18"W x 18"L	1

Fire barrier versions can be ordered to conform with 2000 NFPA 101 (Life Safety Code) and Cal TB# 133 by adding "29" to item number.

#### QUICK FACTS

##### Use for:

- Pain relief
- Prevention & treatment of skin breakdown
- Assistance with positioning

RISK LEVEL Low Moderate High

### Isch-Dish® Thin

Pressure relief, positioning, and pain relief for those not at high risk for pressure ulcers. A full 1.25" lower than the standard Isch-Dish. Great for sensate users, including stroke and geriatric patients, and for those with chronic sitting pain due to injury or illness. Ideal for hemi-chairs, office chairs, and car seats. Preferred by active users in lightweight wheelchairs. Includes support core protected by Durafilm™ incontinence-proof coating, machine washable cover, removable Sling-Fill seat base (see page 33), 2-year warranty. Height 2.25". Weight limit 250 lbs.

Medicare Code: Positioning – E2605.



Item #	Description	Qty/Cs
241R	Small Pocket Regular, 16"W x 16"L	1
241W	Small Pocket Wide, 18"W x 16"L	1
242R	Medium Pocket Regular, 16"W x 16"L	1
242W	Medium Pocket Wide, 18"W x 16"L	1
243W	Large Pocket Wide, 18"W x 16"L	1

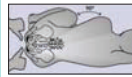
Fire barrier versions can be ordered to conform with 2000 NFPA 101 (Life Safety Code) and Cal TB# 133 by adding "29" to item number.

#### QUICK FACTS

##### Use for:

- Pain relief
- Prevention & treatment of skin breakdown
- Assistance with positioning

RISK LEVEL Low Moderate High



#### How to measure Ischial Span:

Place patient lying down on their side with knees pulled toward chest. Feel for ischials as pictured in drawing. Measure the distance from the center of one ischial tuberosity to the center of the other.  
The distance measurement is the ischial span.

#### Determining Pocket Size:

- If the Ischial Span is – 4.25 – 5 in. = small pocket  
5 – 5.75 in. = medium pocket  
5.75 – 6.75 in. = large pocket
- Next – Then measure seat (width and length), choose Item # from above.



SEATING