

AltimateMedical

P.O. Box 180
262 West 1st St
Morton, MN 56270
Toll Free: 800.342.8968 or 507.697.6393
Fax Free: 877.342.8968 or 507.697.6900
email: info@easystand.com
www.easystand.com



EasyStand[™]



Standing technology should only be used under the guidance of a physician with recommendations for standing program protocol and any medical precautions. Standing programs should be monitored by the attending therapist. AMI maintains a policy of continual product improvement and reserves the right to change features, specifications, and prices without prior notification. Check with AMI for latest info.
FORM MANEVM 0607 Copyright © 2007 Altimate Medical, Inc. All rights reserved. Printed in the U.S.A.

EasyStand[™] Evolv[™]

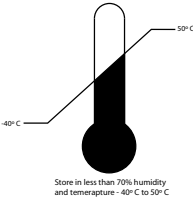


Owner's Manual

SYMBOL LEGEND



ATTENTION, consult accompanying documents.



ENVIRONMENTAL CONDITIONS



TYPE B APPLIED PART



PINCHPOINT



DATE OF MANUFACTURE



FOOT TRAP

SN

SERIAL NUMBER



Please be environmentally responsible and recycle this product through your recycling facility at its end of life.

Afin de préserver l’environnement, veuillez confier ce produit à votre centre de recyclage à la fin de sa durée de vie.

Nachdem dieses Produkt ausgedient hat, entsorgen Sie es bitte auf umweltfreundliche Weise, indem Sie es zu der entsprechenden Recyclingstelle bringen.

Wees a.u.b. milieubewust en recycleer dit product via uw recycleerder na het verstrijken van de levensduur.

Sea responsable con respecto al medio ambiente y recicle este producto al finalizar su vida útil en el lugar de reciclaje correspondiente.

Siate responsabili verso l’ambiente e riciclate questo prodotto, al termine della sua vita d’uso, presso la vostra sede di riciclaggio.

Kierrätä tämä tuote sen käyttöiän lopussa ympäristövastuullisella tavalla paikallisella kierrätyslaitoksella.

Var miljömedveten och återvinn denna produkt efter dess användning.

Vi ber deg ta hensyn til miljøet og resyklere dette produktet ved hjelp av de rette resykleringsfasilitetene når produktet ikke lenger kan brukes.

Vis venligst hensyn til miljøet ved at levere produktet til det nærmeste genbrugsanlæg, når det ikke længere fungerer.

Por favor, assum a responsabilidade ambiental, reciclando este produto em suas instalações de reciclagem no final de sua vida útil.

Limited Warranty

This warranty is extended only to the original purchaser/customer (or supplier non consumer who does not buy or resell). Altimate Medical, Inc. (AMI) warrants the EasyStand Evolv against defects in materials and workmanship as listed below.

- Steel Frames - 5 year warranty
- Hydraulic Actuator - 2 year warranty
- Upholstered components, plastic pads, rubber parts, painted surfaces, bearings and other parts not specifically identified above - 90 day warranty

Warranty on Electric lift option components is as follows:

- Actuator & Hand Pendant – 2 year warranty
- Control Box & Battery – 90 days
- Battery Charger – 90 days

The warranty period commences for the consumer on the purchase date from the seller/supplier. If the product is rented or otherwise not sold to a consumer, the warranty period commences from the date of invoice from AMI. Any product proven to AMI satisfaction to be defective and within warranty period, shall be repaired or replaced at AMI’s option.

AMI’S SOLE OBLIGATION AND YOUR EXCLUSIVE REMEDY UNDER THIS WARRANTY SHALL BE LIMITED TO SUCH REPAIR AND/OR REPLACEMENT. This warranty does not include any labor charges incurred in replacement parts installation. Freight charges to factory are at the expense of consumer to seller. Return freight charges will be prepaid by AMI. For warranty service, please contact the authorized supplier from whom you purchased your AMI product. In the event you do not receive satisfactory warranty service, please write directly to AMI at the address below. Do not return products to our factory without prior authorization.

LIMITATIONS AND EXCLUSIONS: The foregoing warranty shall not apply to serial numbered products if the serial number has been removed or defaced. Products subject to negligence, abuse, misuse, improper operation, improper maintenance, improper storage, or damages beyond AMI’s control are not covered by this warranty, and that evaluation will be solely determined by AMI. The warranty shall not apply to problems arising from normal wear or failure to follow instructions. The warranty will be void if parts not manufactured by AMI or parts not complying with original equipment specifications are added to an AMI product.

THE FOREGOING WARRANTY IS EXCLUSIVE AND IN LIEU OF ALL OTHER EXPRESS WARRANTIES. AMI SHALL NOT BE LIABLE FOR ANY CONSEQUENTIAL OR INCIDENTAL DAMAGES WHATSOEVER.

AMI maintains a policy of continual product improvement and reserves the right to change features, specifications, and prices without prior notification. Check with AMI for latest information.

Altimate Medical, Inc., P.O. Box 180, 262 W. 1st St., Morton, MN 56270 USA
Phone: 507•697•6393 Fax: 507•697•6900 800•342•8968
www.easystand.com info@easystand.com

Environmental Issues

After life of the product:

- Recycle in accordance with the recycling codes of your country.
- Recycle all metal parts.
- Plastic parts should be disposed of or recycled according to the directive in your country.
- Please inquire at your local disposal management and recycling center for local codes.
- Return hydraulic actuator to Altimate Medical, Inc.

Standing Progress Log



Client's Name: _____ Diagnosis: _____

[illegible]

During the above standing program, the client experienced positive changes in these areas:
☐ ROM ☐ Reduced Spasms ☐ Bowel ☐ Bladder ☐ Respiratory ☐ Improved Upper Body Balance ☐ Psychological Boost

Table of Contents

| | |
|--|----|
| Introduction | 1 |
| Safety Precautions | 2 |
| Basic Unit Assembly-Evolv | 3 |
| Configuration Assembly | |
| Glider | 7 |
| Shadow Tray | 9 |
| Mobile | 11 |
| Option Assembly | |
| Pow'r Up Lift Option | 15 |
| Other Options | 19 |
| Basic Unit Reference Drawing-Evolv | 28 |
| Evolv Options & Parts Detail | 29 |
| Adjusting Your Evolv | 31 |
| Perfect Fit Guide. | 33 |
| Glider Adjustments | 34 |
| Shadow Tray Adjustments | 35 |
| Transferring & Standing | 36 |
| Maintenance | 37 |
| Specifications | 38 |
| Standing Log | 39 |
| Limited Warranty | 40 |

Videos on EasyStand Evolv assembly & fitting can be viewed at www.easystand.com/videos

Introduction

Congratulations on your purchase of the EasyStand Evolv standing frame! We at Altimate Medical have designed the EasyStand Evolv with your comfort and happiness in mind.

This manual is an integral part of your standing system and should be read completely and thoroughly by anyone that will be operating the unit.

This will ensure that the EasyStand Evolv is assembled properly and used in the most beneficial manner.

AMI recommends that an attendant be present when the EasyStand Evolv is being used. Should any problem arise that you cannot solve by reading this manual, please contact your local supplier or call Altimate Medical Inc. at 800-342-8968 or 507-697-6393.

It is important and necessary that you inspect your EasyStand Evolv periodically to assure that it is in safe operating condition. Minor adjustments can be made by the operator. However, replacement of worn parts, major adjustments, or any other important corrections should be handled by an authorized supplier or service center. Only Altimate Medical, Inc. approved replacement parts should be used to ensure safety and performance.

Do not use the EasyStand Evolv without consulting your physician.

Failure to consult a qualified physician prior to using the EasyStand Evolv could lead to severe medical problems. We recommend that a good standing program be established and supervised by a qualified physician or physical therapist.

Date Purchased _____ Serial # _____

Evolv Basic Specifications

| | | |
|-----------------------------|-------------|-----------|
| Height Range - Youth | 4'0"-5'6" | 122-168cm |
| - Adult | 5'0"- 6'2" | 152-188cm |
| Weight Limit - Youth | 200 lbs. | 90kg |
| - Adult | 280 lbs. | 127kg |
| Seat Depth Range -Youth | 14"-19" | 36-48cm |
| -from seat pivot -Adult | 16"-21" | 41-53cm |
| Seat to Footplate Range | | |
| -from seat pivot | 14"-21" | 36-53cm |
| Kneepad Depth Range | | |
| -from seat pivot | 3.5"-5.75" | 9-15cm |
| Seat Height | 21.5" | 55cm |
| Table/Frontpad Depth Range | | |
| -from seat pivot | 0-10.5" | 0-27cm |
| Standard Table Height Range | | |
| -from seat pivot | 15.5"-30.5" | 39-77cm |
| Knee Width Large | | |
| -center to center | 9" | 23cm |
| Footprint | | |
| -caster to caster | 25"x33" | 64x84cm |
| Weight of Basic Unit -Youth | 101 lbs. | 46kg |
| -Adult | 104 lbs. | 47kg |
| Frame Color | Charcoal | |
| Standard Upholstery Color | Black | |
| Standard Table Size | 21"x24" | 53x61cm |

Glider Specifications

| | | |
|--------------------------------|-------------|----------|
| Seat to Footplate Range | | |
| -from seat pivot | 15"-18" | 38-46cm |
| Seat Height | 22.5" | 57cm |
| Table/Frontpad Depth Range | | |
| -from seat pivot | 5"-15.5" | 13-39cm |
| Knee Width Large | | |
| -center to center | 10" | 25cm |
| Footprint | | |
| -caster to caster | 25"x38" | 64x97cm |
| Weight of Evolv Adult w/Glider | 174 lbs. | 79kg |
| Glider Table Size | 7.5"x19" | 19x48cm |
| Stride Length | 18" | 46cm |
| Glide Handle Height Range | | |
| -from seat pivot - Youth | 24.5"-33.5" | 62-85cm |
| - Adult | 24"-41.5" | 61-105cm |

Shadow Tray Specifications

| | | |
|------------------------------------|-----------|---------|
| Table/Frontpad Depth Range | | |
| -from back | 6"-14" | 15-36cm |
| Tray Height from seat pivot -Short | 10.5" | 27cm |
| -Tall | 13.5" | 34cm |
| Weight of Basic Unit | 110 lbs. | 50kg |
| Shadow Tray Size | 21"x24" | 53x61cm |
| Frontpad Height Range - Short | 3.5"-6.5" | 9-17cm |
| - from Seat - Tall | 6.5"-9.5" | 17-24cm |

Mobile Specifications

| | | |
|--------------------------------|-----------|---------|
| Weight of Mobile Option | 44 lbs. | 20kg |
| Weight of Evolv Adult w/Mobile | 141 lbs. | 70kg |
| Mobile Table Size | 18"Wx19"L | 46x48cm |
| Footprint | 28.5"x36" | 72x91cm |
| Wheelbase | 29.75" | 76cm |

Maintenance

- Clean the EasyStand Evolv with a mild non-abrasive disinfectant or soap and water.
- Check your EasyStand periodically to make sure that all nuts, bolts and adjustable parts are tightened securely. Failure to do so may result in parts falling off and causing a choking hazard for children.

Hydraulic Actuator Maintenance

- An initial break-in period of approximately 50-100 full cycles is normal for the hydraulic unit. You may experience a squeaking or a less-than-smooth forward stroke. The very close fit of its mating parts gives each pump its own break-in “feel” and signature sound.
- If the pump is leaking oil, call your local AMI Supplier for a replacement. The serial number on your EasyStand will be needed.
- Do not exert excessive force on the pump handle or use the pump handle to move your EasyStand around. This may cause damage to the pump handle and/or the pump mechanism and will void any warranty.
- User maintenance is not required or recommended on the hydraulic pump. Never apply lubricant, household oil, grease, or a similar product to any part of the unit. Some compounds may react with the seals used in the manufacture of this product. This may damage the unit and will void any warranty.
- Do not exceed the rated weight capacity of the equipment for which this hydraulic unit is used on (the weight limit for the EasyStand Evolv Adult is 280 lbs and the EasyStand Evolv Youth is 200 lbs).
- If your EasyStand was shipped to you during or exposed to a temperature of less then 50 degrees Fahrenheit, you must allow the hydraulic unit to warm up to room temperature before any use. Failure to follow this step could damage the unit and render it inoperable.
- It is sometimes not necessary to push the pump handle all the way back to lower the seat. If you have difficulty getting the seat to lower, try pushing the handle back into different positions.
- If the unit is in the standing position and unoccupied, it is necessary to apply pressure to the seat of the unit while pushing the pump handle back.

Purging The Hydraulic Actuator

The hydraulic pump on your EasyStand has a high probability of getting air trapped in the internal workings of the unit. This is usually caused by in-transit handling and is quite normal. Please follow the simple steps below, as manual hydraulic systems may never operate properly unless the entrapped air is correctly purged. The unit must be at room temperature for this procedure.

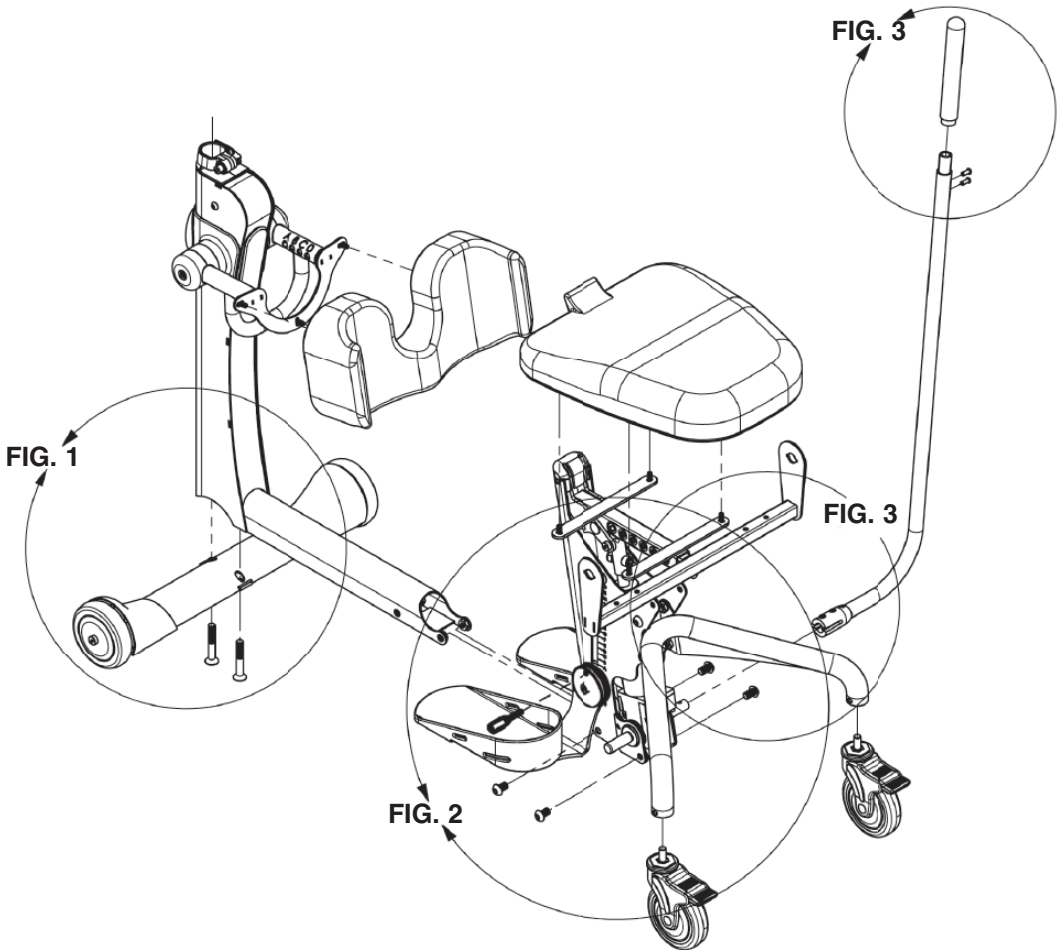
1. Pump the handle until the full extension is reached.
2. Now continue pumping the handle slowly for an additional 10 strokes. This will properly purge the system.

Safety Precautions

- If you do not meet these specifications and have not been properly fit by a qualified therapist or physician, Altimate Medical Inc. does not recommend that you use the EasyStand Evolv.
 - **Evolv Youth-** is designed to accommodate most individuals from 4'0"-5'6" (122-168 cm) and up to 200 lbs. (90 kg).
 - **Evolv Adult-** is designed to accommodate most individuals from 5'0"-6'2" (152-188 cm) and up to 280 lbs. (127 kg).
- Altimate Medical Inc. recommends that you consult with your therapist or physician prior to starting a standing program.
- Check your EasyStand periodically to make sure that all nuts, bolts and adjustable parts are tightened securely.
- Never reposition the foot holders while you are in the standing position. Consult with your therapist or physician for proper foot placement and angle.
- If the unit was exposed to temperatures of less than 50°F (23.5°C), you must allow the unit to warm up to room temperature before use.
- Use body weight to lower the seat. Do not use excessive force.
- The EasyStand is for indoor use only.
- Always use your EasyStand on a level surface.
- Violently thrusting in the EasyStand may cause it to tip.
- You should always put the rear casters and/or wheels in the locked position before transferring into the EasyStand. Use these locks whenever you want to keep the EasyStand stationary.
- The EasyStand Evolv meets EN12182:1999 (test standard) for strength, durability and tipping stability.
- Please contact Altimate Medical Inc. for relevant clinical data and literature, strength, durability and test results as applicable.
- The EasyStand Evolv Electric Lift meets the requirements of IEC 60601-1 and 60601-2.*
- Electronic equipment can be affected by Radio Frequency Interference (RFI). **Caution** should be exercised when using portable communication equipment around such equipment. If RFI causes erratic behavior, use the mechanical release to lower the unit to the seated position immediately.*
- Altimate Medical products are specifically designed to be used with Altimate Medical accessories and options. Unless otherwise noted, accessories and options from other manufacturers have not been tested by Altimate Medical and are not recommended for use with Altimate Medical products.
- It is recommended that you remove the batteries if the equipment is not likely to be used for quite some time.*
- It is recommended that the equipment be stored in air less than 70% humidity and temperatures -22 to 122 F (-30 to +50 C).
- The wheel lock on the mobile option is to keep the unit in place while transferring or standing stationary and it is **not** intended to be used as a dynamic brake to stop a rolling mobile unit.
- **Warning:** Do not use the EasyStand Evolv Mobile option on an incline, it is intended for level surfaces only. Doing so may cause the unit to tip.

* Evolv Pow’r Up Lift Option Only

Videos on EasyStand Evolv assembly & fitting can be viewed at www.easystand.com/videos



Transferring & Standing

Transferring

- For proper transfer techniques, please seek professional advice from your therapist or physician.
- The kneepad does not lock in the upright position when transferring, do not grab the kneepad for support.
- Always lock the wheel locks on your wheelchair and the casters on the EasyStand Evolv before transferring.
- If you do not need assistance in transferring, position your wheelchair next to the EasyStand Evolv. Flip the armrest and knee support away to allow for increased transfer space. Make sure that the knee support is flipped up to allow you to position your feet. Complete your transfer and position your feet in the footplates. Secure the foot straps and reposition the knee and side supports.
- If required, a patient lift can be used for transferring. There are a variety of access points to accomplish the assisted transfer.
- When transferring out of the EasyStand, pump the seat up so that it is equal to or higher than the seat you are transferring back in to.

Standing

- **Please consult with your physician or therapist before starting a standing program.**
 - Once transferred into the EasyStand, position your feet and the knee support and secure any straps and side supports. Push the pump handle forward with 15-25 strokes. The seat will slowly rise into the standing position. Remember that you can stop the seat anywhere between the sitting and standing position.
- Caution: If the back is adjusted outside of +/- 10 degrees from vertical, it is possible for the back angle adjustment knob to come into contact with the lower back tube, causing damage to the unit.**
- To return to the seated position, move and hold the pump handle toward the rear until you have reached your desired position. The seat will slowly lower until you release the handle. If you have difficulty getting the seat to lower, you may not be applying the proper pressure to the handle.
 - If the unit is in the standing position and unoccupied, apply moderate pressure to the seat of the unit while holding the pump handle back. Do not use excessive force.

Caution: When lowering the unit from standing to sitting, keep all hands and feet clear of the mechanism beneath the seat.

Evolv™ Shadow™ Tray Adjustments

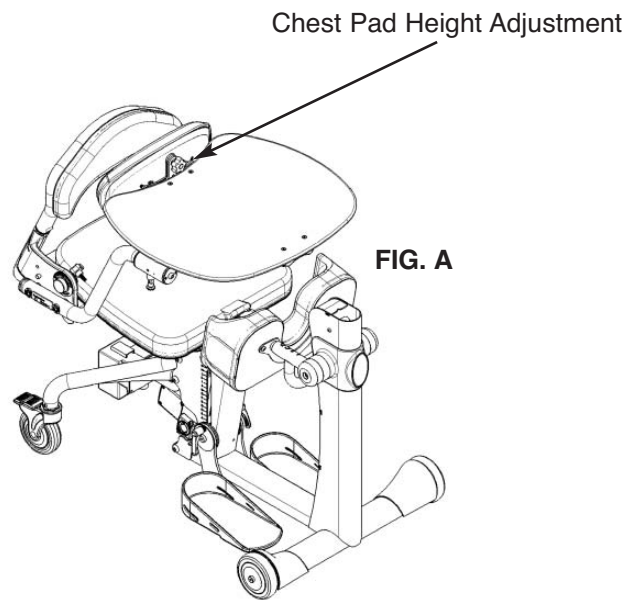


FIG. A- To adjust chest pad height, loosen knob and move to desired position. Tighten securely.

FIG. B- To adjust the depth of the front pad, loosen the knob located below the table. Move the front pad to the user's desired position and tighten the knob. To flip the table up, pull out and twist the locking mechanism and lift.

Caution: After flipping up the tray, be certain to put the locking mechanism back into place. Failure to do so can cause the table to fall suddenly.

Caution: Avoid placing fingers near the table tubes and chest height adjustment slots.

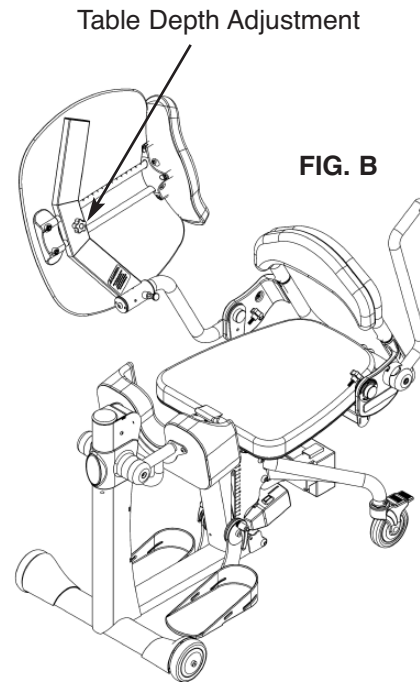


FIG. B

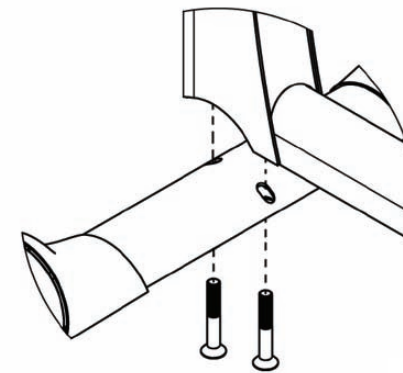


FIG. 1

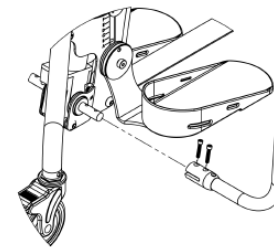


FIG. 3

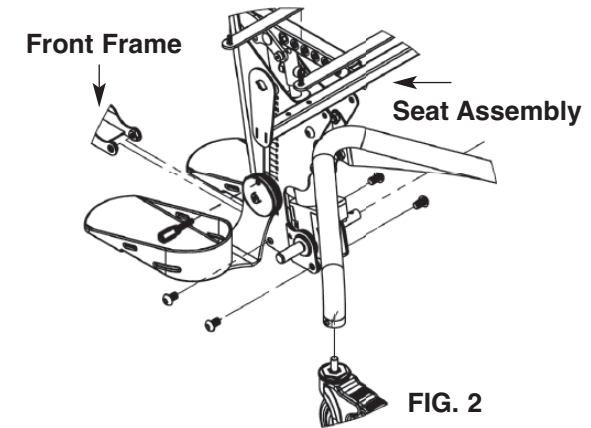


FIG. 2

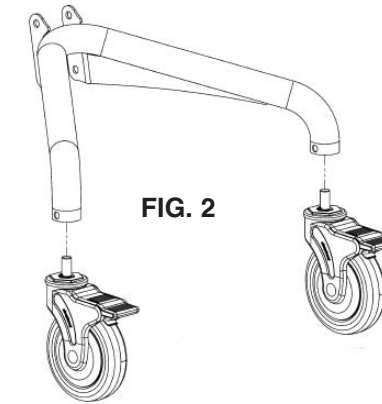


FIG. 2

Note: If you ordered the Glider (p.7), or the Mobile (p.11) configurations, please skip ahead to the appropriate page.

FIG. 1- Attach the front caster frame to the front frame with bolts and tighten securely.

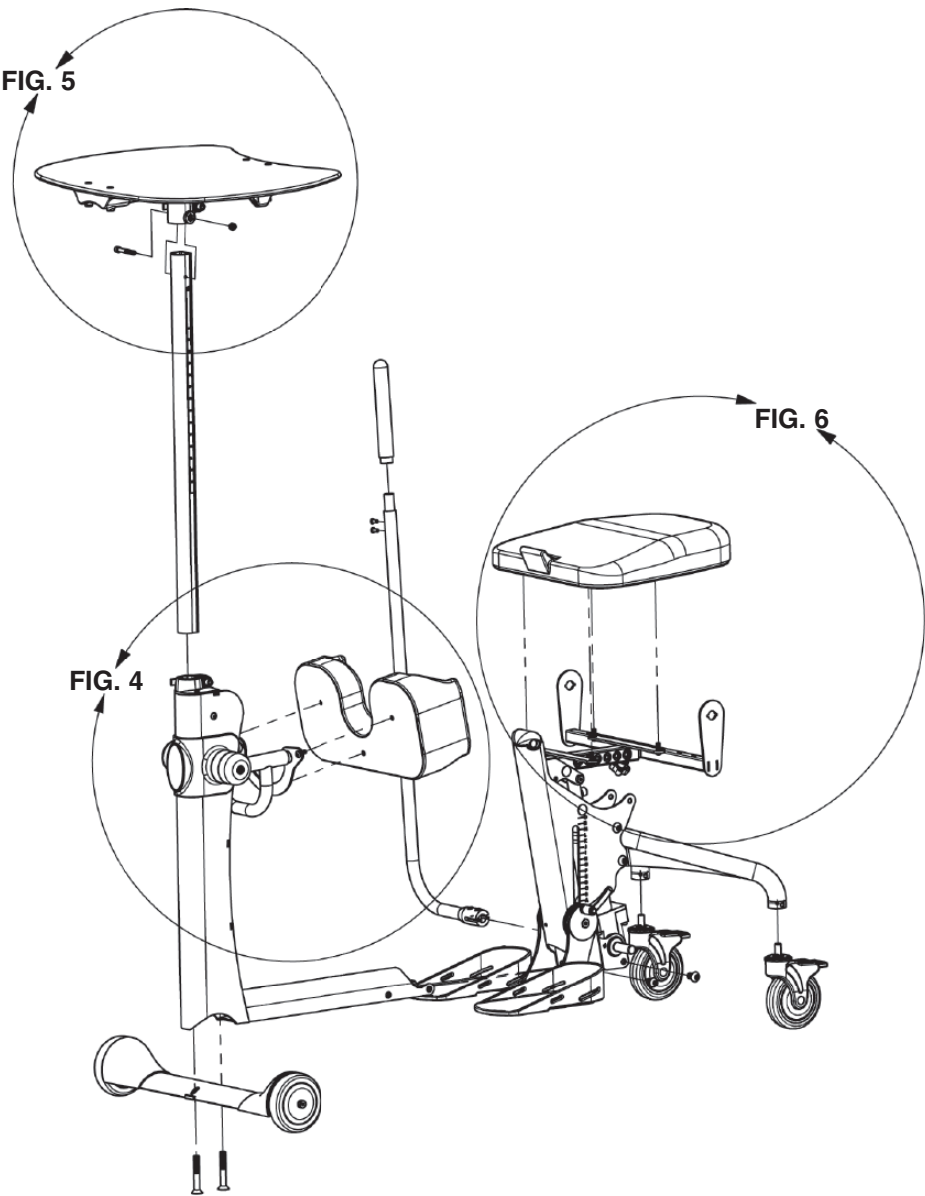
FIG. 2- Attach the casters to the rear of the base, tighten using the wrench provided in the tool kit, do not overtighten.

Slide the front frame into the opening of the seat assembly as shown. To help with installation, place folded cardboard or a block of wood underneath the frame to support it. Start all four bolts first, then tighten securely.

Lift seat up and flip down footplates. Then insert ratchet handles (located in bag with owner's manual) into footplates. Tighten securely.

FIG. 3- Attach the pump handle to the pump on the seat assembly with bolts and tighten securely. Insert top of handle into pump handle and tighten securely.

Basic Unit Assembly-EasyStand® Evolv™ (cont.)



Evolv™ Glider™ Adjustments

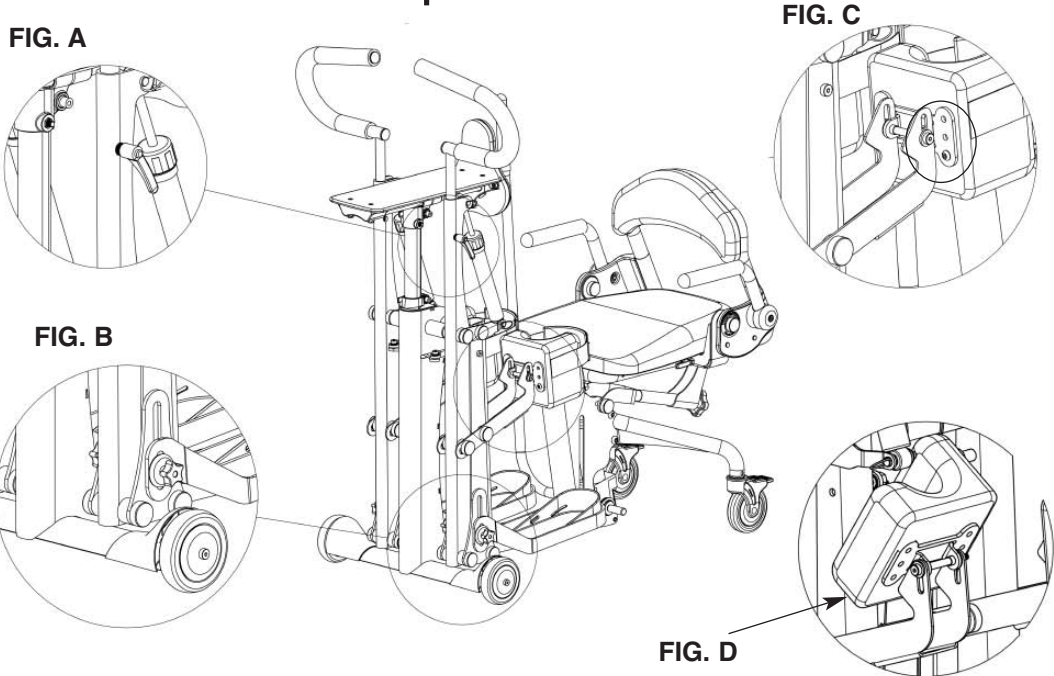


FIG. A- To adjust the height of the glide handles, loosen each clamp. Adjust the handles to the user's desired position and tighten the clamps.

The resistance cylinders are individually adjustable to provide eleven different resistance settings, turn the cap of the cylinders to your desired resistance.

FIG. B- Adjust the footplates so the user's knees are centered in the kneepads, by loosening the two knobs on each footplate (for easier access to the inside knob, swing the leg assembly forward). Tighten securely.

FIG. C- Often, the proper fit can be achieved by adjusting the footplate height. When necessary, the kneepads are independently adjustable with five adjustments. To adjust the kneepads, remove the hex key bolts from the kneepads and adjust to the desired position. Replace the bolts and tighten securely.

FIG. D- Before transferring, flip up the kneepads to allow easier access.

Caution: Never adjust kneepads or footplates while in the standing position.

Caution: While using the Glider, advise bystanders to keep hands and feet clear of the Glider mechanism.

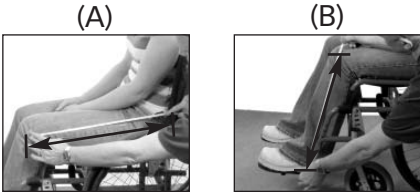
Caution: While using the Glider, keep hands clear of the resistance cylinders' upper and lower mounting points.

Perfect Fit Guide

Proper positioning is needed to obtain optimum standing posture.

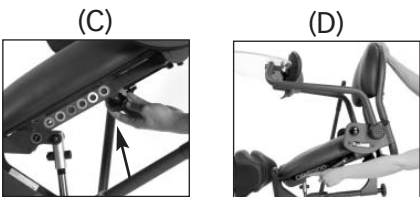
step one

Measure client for approximate seat depth (A) and footplate (B) settings.



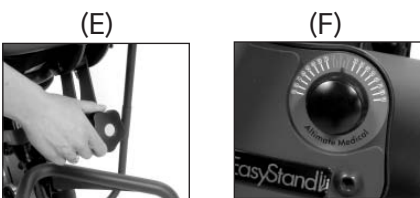
step two

To adjust seat depth, loosen the knob under the seat (C). Depress the snap button on the adjustment tube while moving the back (D). Tighten the knob after adjusting.



step three

After achieving your desired seat depth, rotate the back angle adjustment knob (E) so the increment indicator (F) is in the green (safe) area.



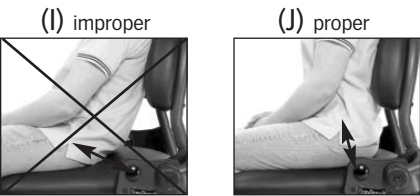
step four

Loosen the ratchet handles on the footplates to adjust height and plantar/dorsi (G). Client's knee should be slightly lower than the hip (H). Tighten ratchet handles after positioning.



step five

Position the user's hips as close as possible to stander's hip pivot (I & J).



step six

To determine correct positioning, you should be able to fit two fingers between the front of the seat and the calf (K). Adjust the kneepad so it fits comfortably up to the knees (L).

NOTE: There is no kneepad depth adjustment on the Glider.

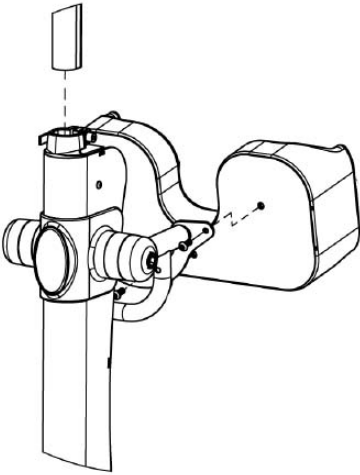
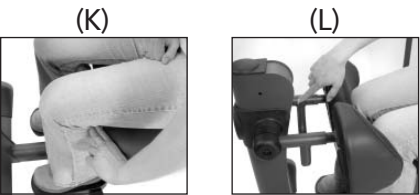


FIG. 4

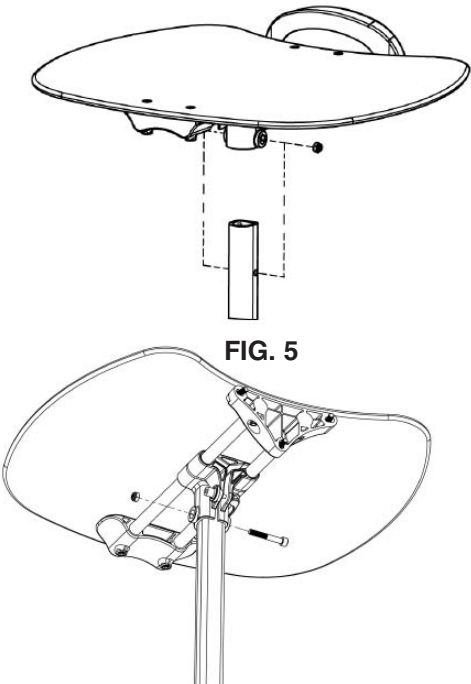


FIG. 5

FIG. 4- Place kneepad onto knee bracket. Insert bolts and tighten securely. If you ordered the independent kneepads, place pads into knee bracket and insert pin, make sure the larger end of the pad is on the outside of the unit.

FIG. 5- If you ordered the Shadow Tray, please refer to p. 9-10. If you have the standard unit tray, insert the tray post into the front column. The table clamp on the front frame may need to be adjusted to fit the tray post into the frame. Holes in the post must face upward. Place tray onto the tray post, insert nut into slot and bolt into hole, tighten securely.

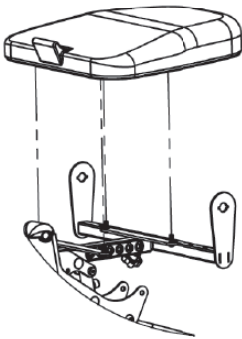
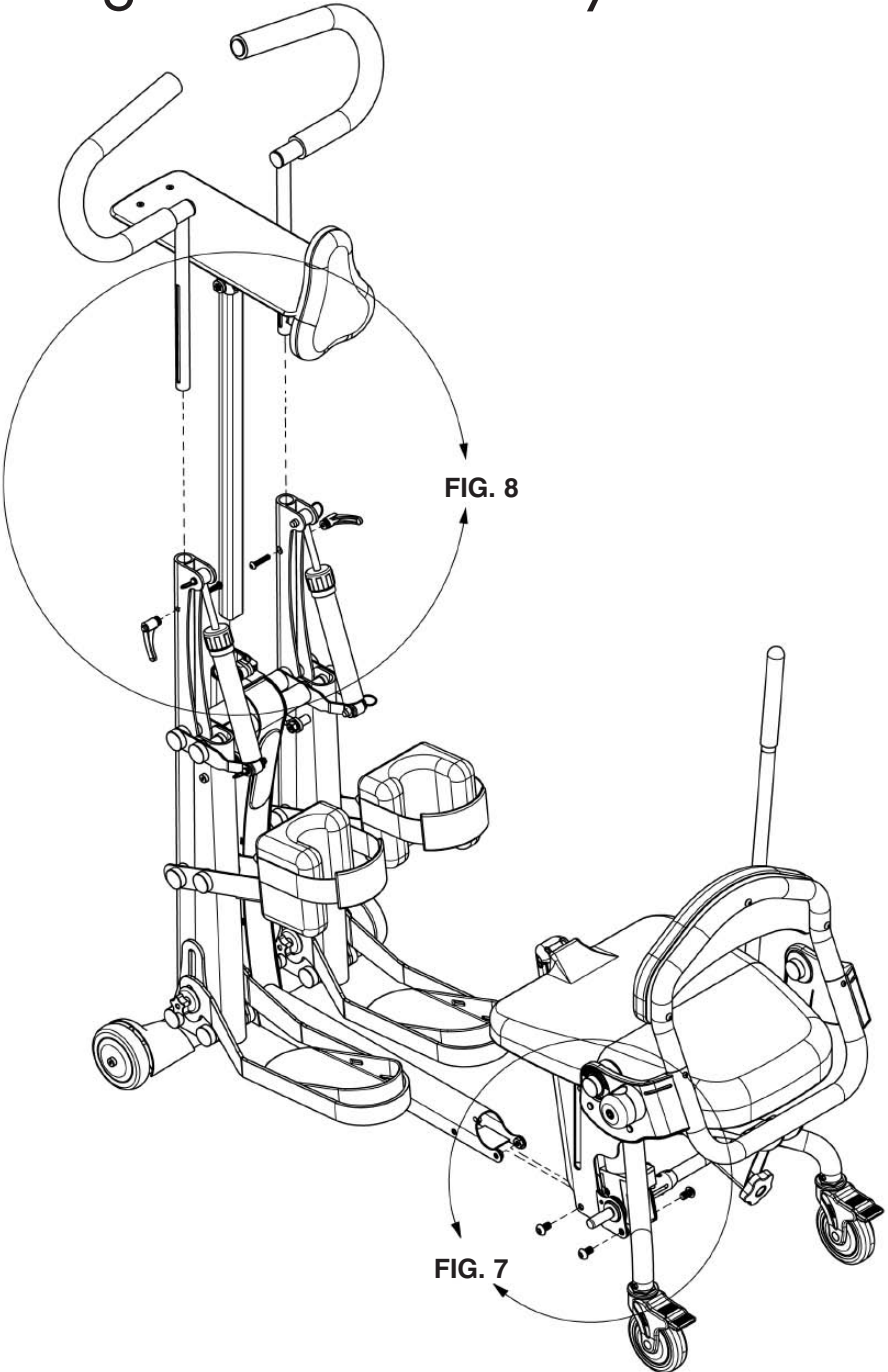


FIG. 6

FIG. 6- If you ordered any additional options, please refer to the drawings on p.15-27. Install the seat onto the seat assembly after all the other options are added. For easier installation, pump the seat halfway up. Start all four bolts first then tighten securely.

For Evolv adjustments, see p. 31.



Seat Depth/Back Angle

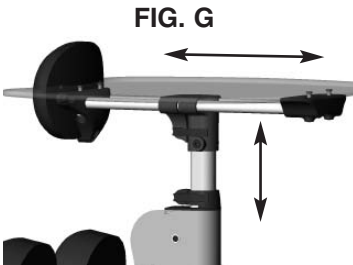
- **FIG. F-** Loosen the clamp on the seat tube located under the seat. Do not unscrew seat depth knob all the way when adjusting the seat.
- Depress the spring button and position the back so that the hip pivot is located as close as possible to the user's hips.
- Tighten the seat depth knob securely.
- Using the knob located on the following arm, adjust the back angle to vertical +/- 10 degrees.

Caution: If the back is adjusted outside of +/- 10 degrees from vertical, it is possible for the back angle adjustment knob to come into contact with the lower back tube, causing damage to the unit.



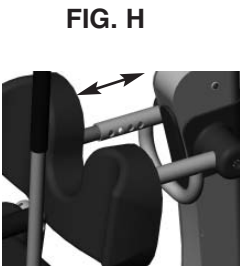
Tray/Front Pad

- **FIG. G-** To adjust the height of the tray/front pad, loosen the clamp located just above the front column. Lift the tray to the user's desired height level and tighten the clamp.
- To adjust the depth of the tray/front pad, loosen the clamp located just below the tray. Move the front pad to the user's desired position and tighten the clamp.



Kneepad

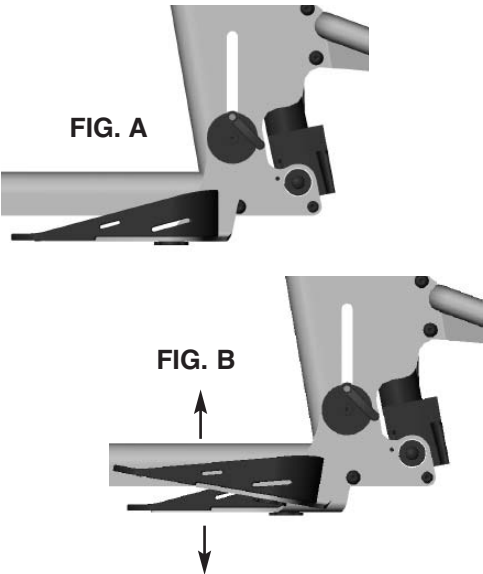
- **FIG. H-** To adjust the kneepad, depress the spring button connecting the kneepad to the front column.
- Position the kneepad so that the user's knee is cushioned in the front and only 2 fingers space between the back of the leg and the seat.



Adjusting Your EasyStand® Evolv™

Footplates

- **FIG. A-** Loosen the clamp connecting the foot bracket to the seat post.
- Position the height of the foot bracket so the user's knee is as close to the seat pivot as possible.
Caution: Avoid placing fingers in the adjustment slot.
- **FIG. B-** The footplates can also be adjusted plantar/dorsi.
- Tighten the clamp securely.
- **FIG. C and D-** The toes of the user can be abducted (toe out) by lifting the front edge of the foot plate and twisting the foot plate.



Hip Supports and Lateral Supports

- **FIG. E-** The hip supports can be adjusted by loosening the knob underneath the unit to move the hip support in and out or loosen the knob on the side of the unit to move the hip support up or down. These can be removed for transferring.
- The lateral supports can be adjusted by loosening the knob on the back of the unit to move the laterals in or out and by loosening the knob on the side to adjust the depth. Lateral brackets may also be swapped left for right to gain additional range of adjustment.
- In addition, the hip and lateral pads have a number of attachment holes on the back of the pad which will allow for additional positions vertically and horizontally. The pad may also be bolted on at a straight, 90, 180, or 270 degree rotational position. Carefully use a sharp object to punch a hole into the fabric to expose the hole. Please check for fit and interference by bringing to a fully standing position and back to sitting again without a user seated in the unit, as the pads may not work in all positions in all possible configurations, depending on the size and options installed on your unit.

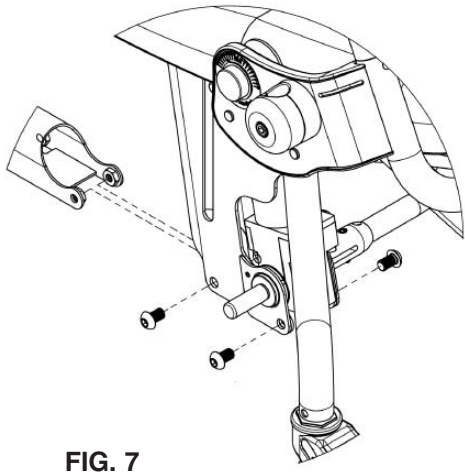
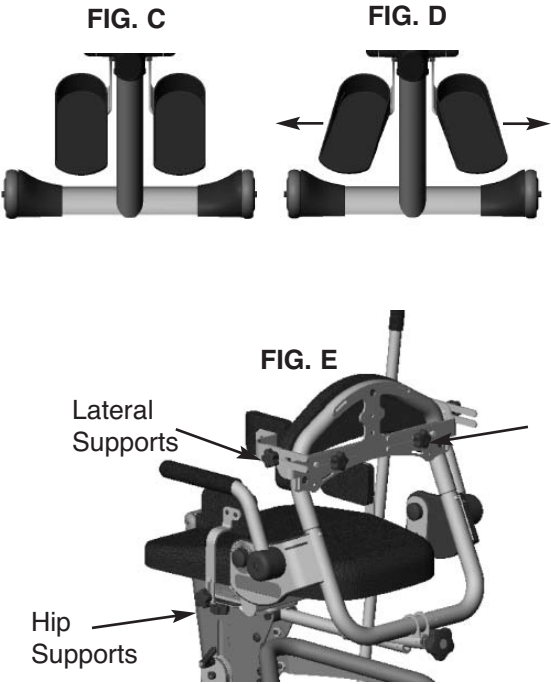


FIG. 7- Slide the front Glider column into the opening of the seat assembly as shown. To help with installation, place folded cardboard or a block of wood underneath the frame to support it. Start all four bolts first, then tighten securely.

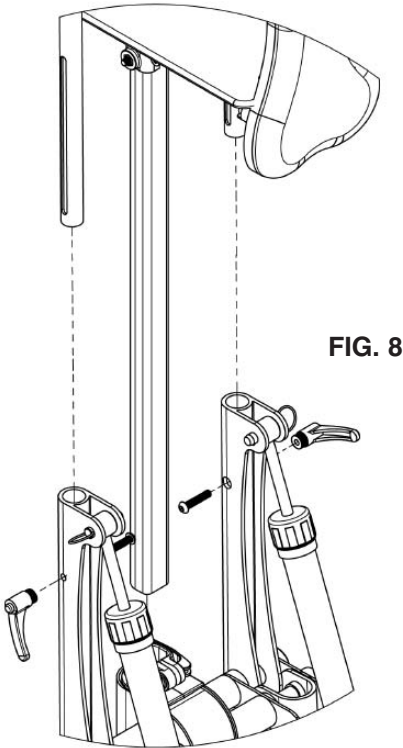
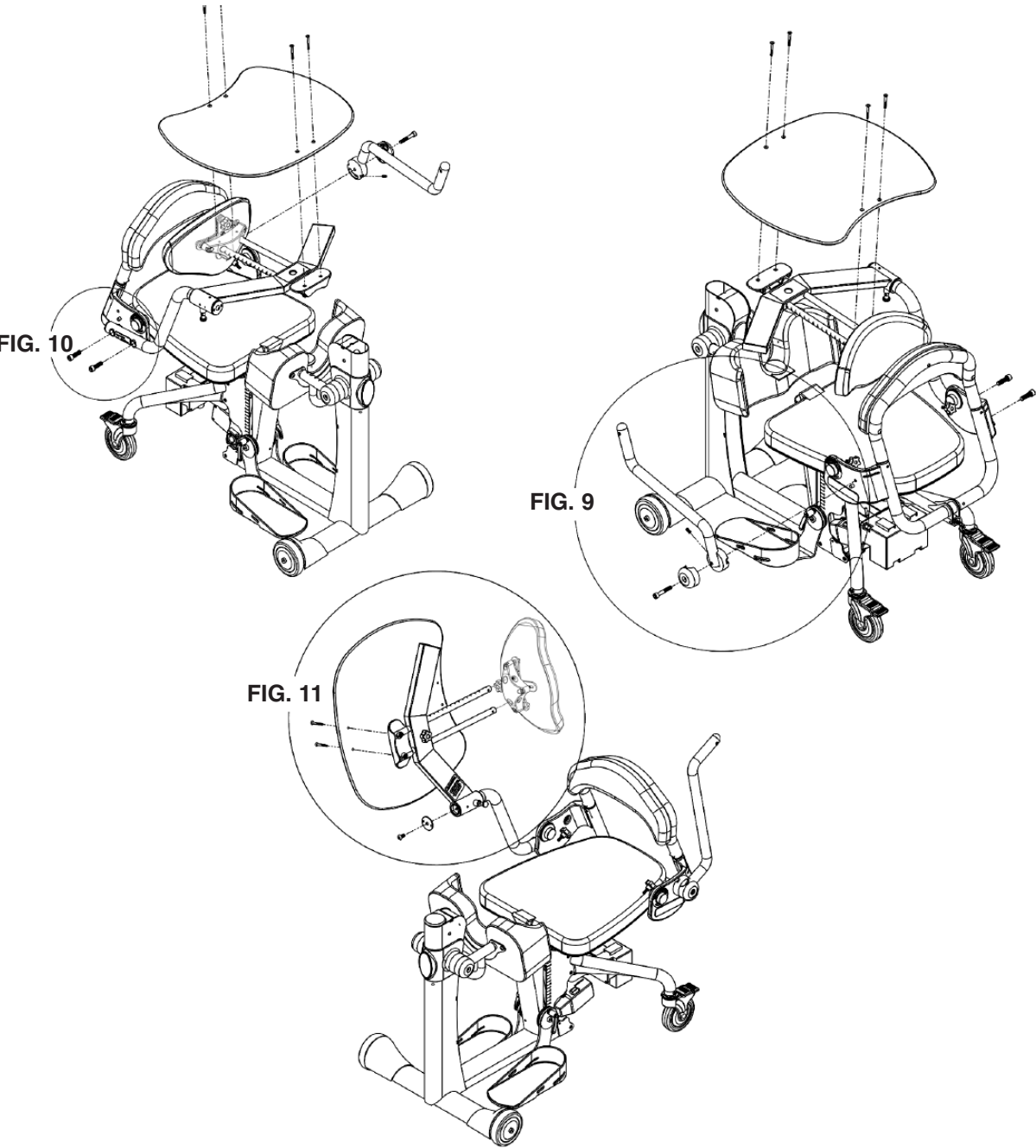


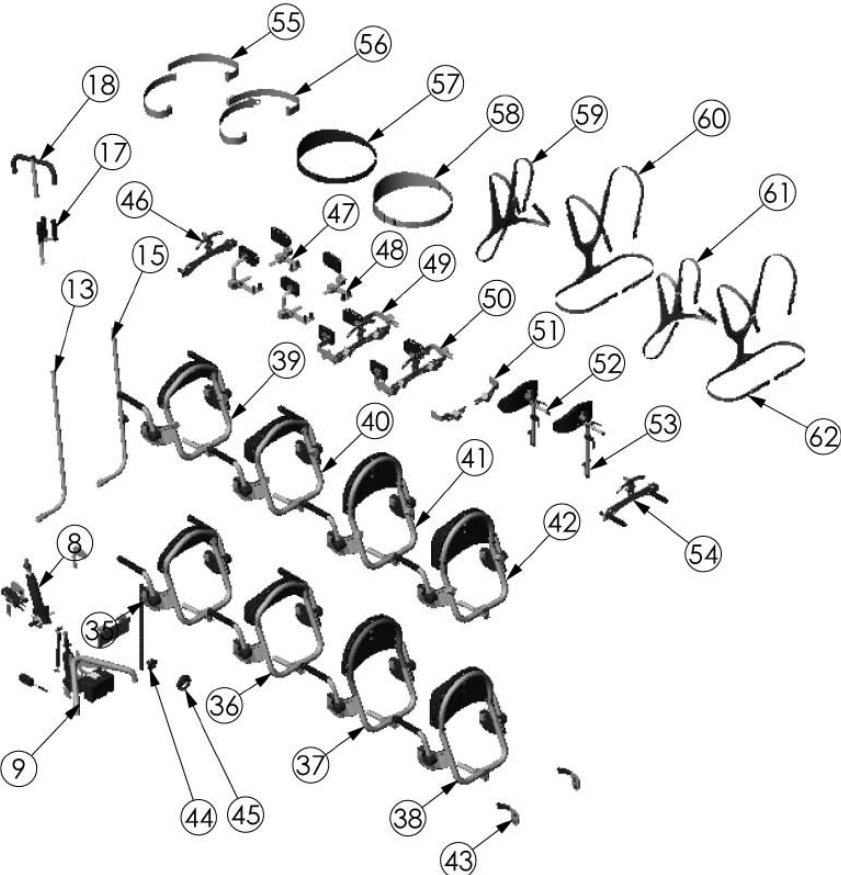
FIG. 8- Slide the handles into the slots. Tighten securely. If you ordered any additional options, please refer to the drawings on p.15-27. Install the seat onto the seat assembly after all the other options are added.

For Glider adjustments, see p. 34.

Configuration Assembly-Shadow™ Tray



| ITEM NO. | PART NO. | QTY. | NAME | ITEM NO. | PART NO. | QTY. | NAME | ITEM NO. | PART NO. | QTY. | NAME |
|----------|----------|------|------------------------------------|----------|----------|------|--------------------------------|----------|----------|------|-----------------------------------|
| 1 | NG50008 | 1 | FRONT FRAME STANDARD LG | 23 | NG30190 | 1 | PAD SEAT GLIDER ROHO OPTION LG | 45 | 600002 | 1 | WHEEL 100mm W/FOLD AWAY HANDLE |
| 2 | NG50084 | 1 | EVOLV LARGE (V400) | 24 | NG30000 | 1 | PAD FRONT EXTRA SUPPORT | 46 | NG50034 | 1 | BRACKET ACCESSORY LG |
| 3 | NG50055 | 1 | FRONT CASTER FRAME STANDARD | 25 | NG30001 | 1 | PAD CHEST STANDARD | 47 | NG50161 | 1 | HIP GUIDE ASSEMBLY MEDIUM |
| 4 | NG50058 | 1 | SEAT REAR CASTER TUBE | 26 | NG50309 | 1 | TABLE POST ASSEMBLY | 48 | NG50198 | 1 | HIP GUIDE ASSEMBLY LARGE |
| 5 | NG50015 | 1 | FOOT ASMBLY LG | 27 | NG50043 | 1 | ANGLE ADJUSTABLE TRAY | 49 | NG50224 | 1 | LATERAL SUPPORT ASSEMBLY MEDIUM |
| 6 | ng30030 | 1 | STRAPS FOOT OPTION | 28 | NG50045 | 1 | HAND CYCLE ATTACHMENT | 50 | NG50176 | 1 | LATERAL SUPPORT ASSEMBLY |
| 7 | NG30031 | 1 | STRAPS SECURE FOOT OPTION | 29 | NG50026 | 1 | TABLE STS OPTION | 51 | NG50041 | 1 | BRACKET ASMBLY LATS UNIVERSAL |
| 8 | NG50009 | 1 | PUMP HYDRAULIC ASSEMBLY | 30 | NG50125 | 1 | TABLE STS OPTION LH | 52 | NG50240 | 1 | HEAD REST ASSEMBLY MED |
| 9 | NG50010 | 1 | ELECTRIC ACTUATOR ASM | 31 | NG50130 | 1 | TABLE STS MEDIUM OPTION | 53 | NG50037 | 1 | HEAD REST ASSEMBLY LG (V915) |
| 10 | NG50069 | 1 | PAD KNEE STANDARD | 32 | NG50231 | 1 | TABLE STS MEDIUM OPTION LH | 54 | NG50040 | 1 | HANDLE PUSH ASSEMBLY |
| 11 | NG50080 | 1 | ASMBLY KNEE INDEPENDENT | 33 | 5030 | 1 | ARM TROUGHS | 55 | NG30029A | 1 | STRAP SEAT BELT BLACK NG |
| 12 | NG50083 | 1 | KNEE ROHO INDEPENDENT | 34 | NG50042 | 1 | SUPPORT GRIP OPTION | 56 | NG30028A | 1 | STRAP SEAT BELT BLACK W/BUCKLE NG |
| 13 | NG50059 | 1 | HANDLE PUMP STANDARD RT | 35 | NG50066 | 1 | BACK LOW FLAT (V907) | 57 | 51601 | 1 | S. CHEST RESTRAINT |
| 14 | NG50126 | 1 | HANDLE PUMP STANDARD LH | 36 | NG50062 | 1 | BACK LOW W/CONTOUR (V908) | 58 | 51600 | 1 | L. CHEST RESTRAINT |
| 15 | NG50035 | 1 | HANDLE PUMP REMOVABLE OPTION RT | 37 | NG50067 | 1 | BACK HIGH FLAT(V909) | 59 | NG30056 | 1 | LARGE CHEST VEST EVOLV |
| 16 | NG50127 | 1 | HANDLE PUMP REMOVABLE OPTION LH | 38 | NG50068 | 1 | BACK HIGH W/CONTOUR (V910) | 60 | NG30021 | 1 | VEST CHEST Y SHAPE ASSEMBLY LARGE |
| 17 | NG50044 | 1 | QUAD GRIP OPTION | 39 | NG50171 | 1 | BACK REMOVABLE LOW FLAT | 61 | NG30170 | 1 | X-STYLE CHEST VEST MEDIUM |
| 18 | NG50070 | 1 | ACTUATOR HANDLE EXTENSION EVOLV LG | 40 | NG50172 | 1 | BACK REMOVABLE LOW CONTOURED | 62 | NG30171 | 1 | Y-STYLE CHEST VEST MEDIUM |
| 19 | NG50024 | 1 | NEW GENERATION GLIDER ASSEMBLY | 41 | NG50173 | 1 | BACK REMOVABLE HIGH FLAT | 63 | NG50295 | 1 | ASMBLY NO-TABLE OPTION |
| 20 | NG30006 | 1 | PAD SEAT COUNTOURED LARGE | 42 | NG50174 | 1 | BACK REMOVABLE HIGH CONTOURED | 64 | NG20017 | 1 | TABLE BASIC |
| 21 | NG30023 | 1 | PAD SEAT LG ROHO OPTION | 43 | NG50097 | 1 | HANDLES NO BACK | 66 | NG20019 | 1 | TABLE GLIDER |
| 22 | NG30185 | 1 | PAD SEAT GLIDER LARGE | 44 | 600077 | 1 | KNOB M12 FEMALE | 67 | NG20092 | 1 | TABLE MOBILE |
| | | | | | | | | 68 | NG50025 | 1 | MOBILE OPTION EVOLV |



EasyStand® Evolv™ Options/Parts Detail

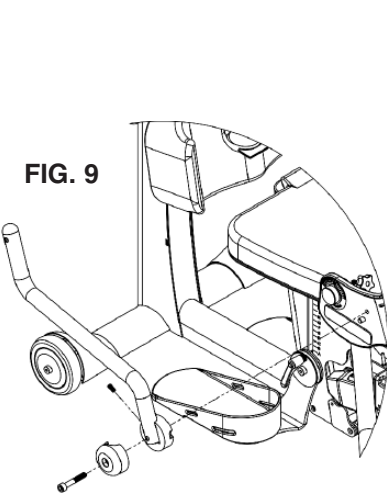
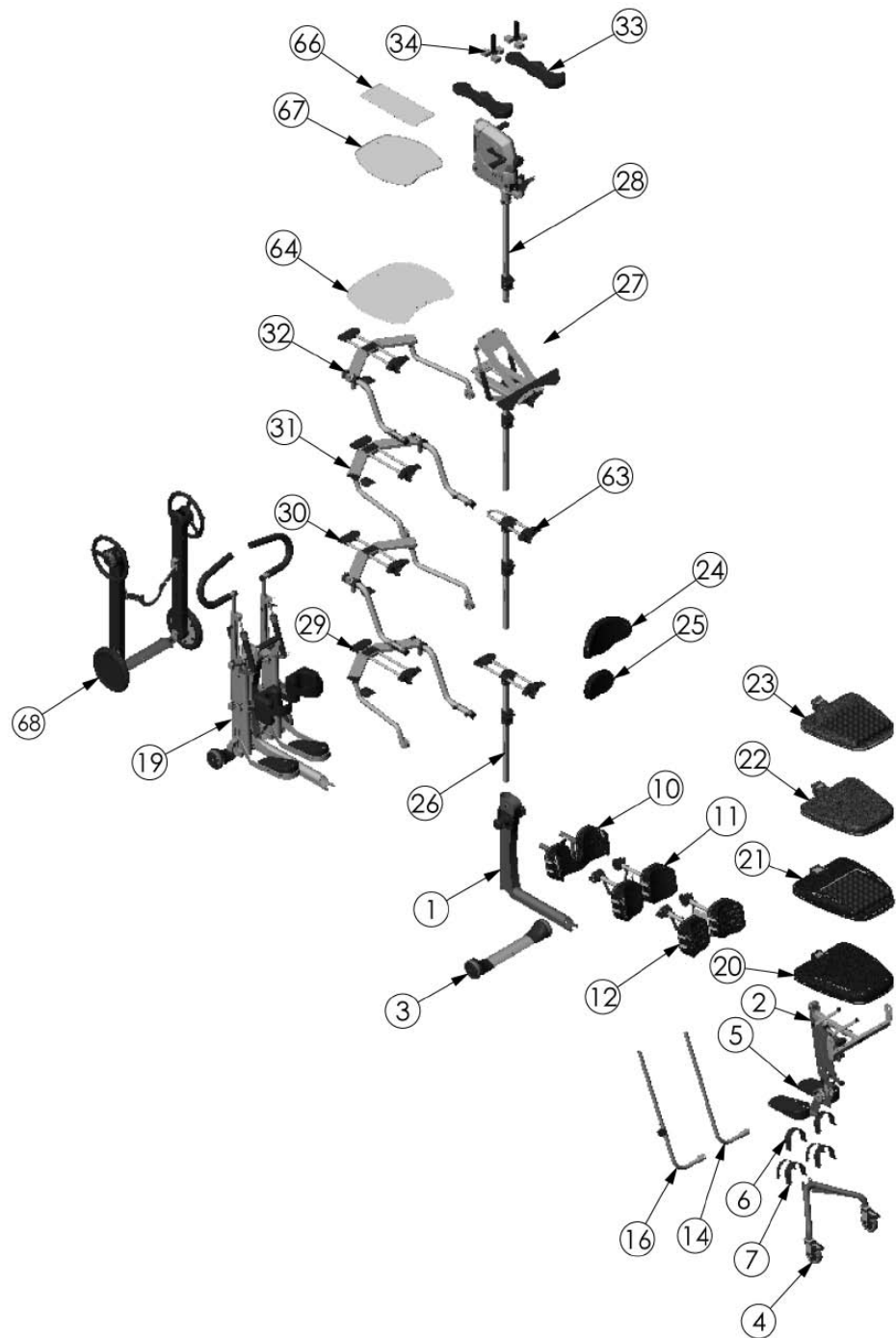


FIG. 9

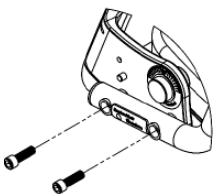


FIG. 10

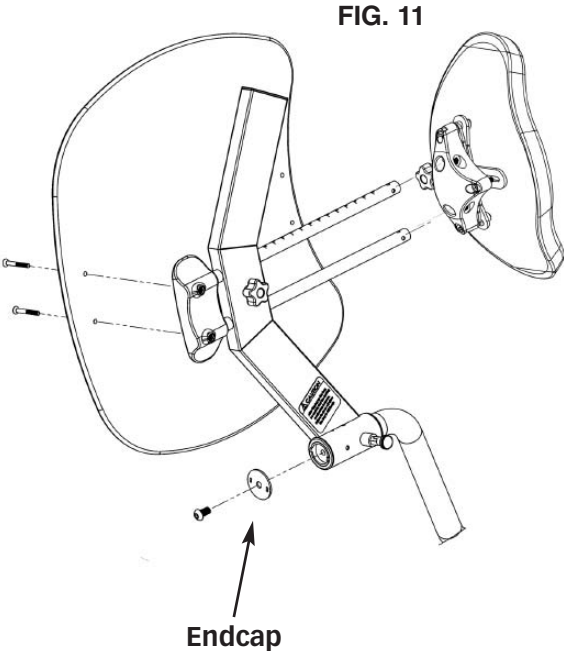


FIG. 11

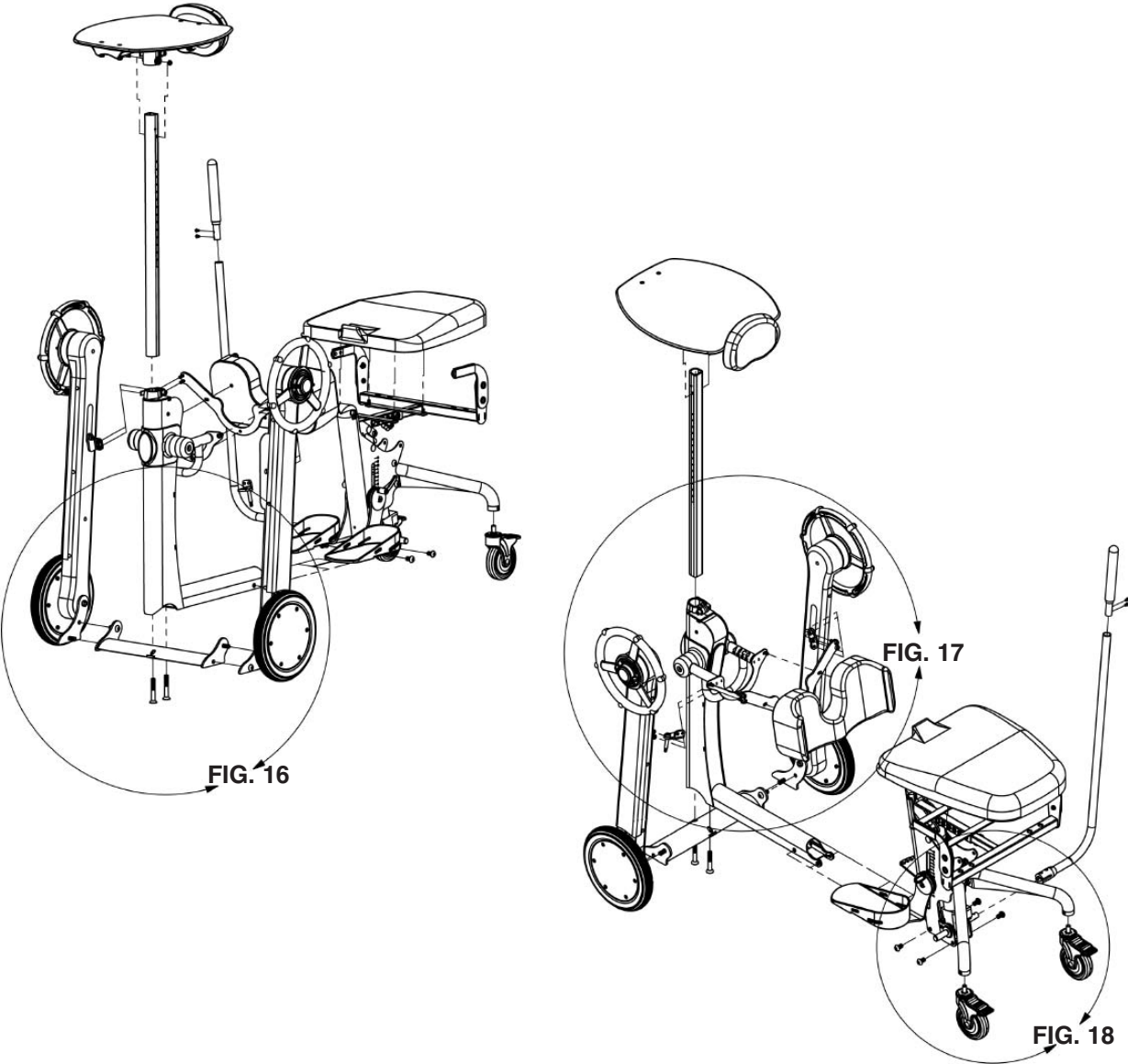
Endcap

FIG. 9- To install the support arm, remove the nut from the lower part of the support arm. Place support arm onto the unit. Place nut onto the bolt on the inside of the seat bracket. Tighten bolts and nuts securely.

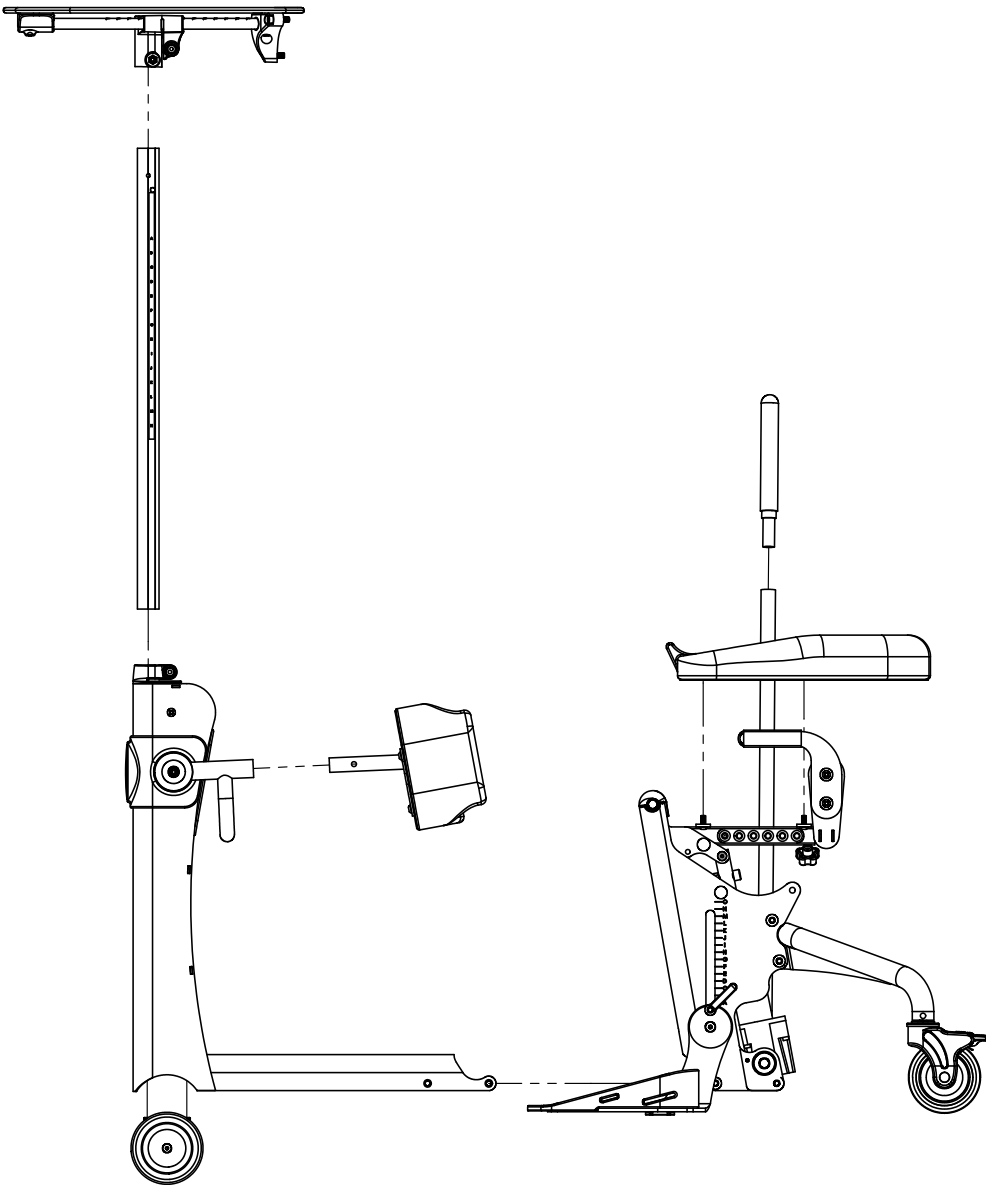
FIG. 10- Install the table arm rest to the unit with the two bolts attached. Tighten bolts securely.

FIG. 11- Remove the endcap from the table arm. Pull the tray bracket out about an inch, rotate the bracket to vertical while pushing it side to side to place tray into position. Replace the end cap. Place tray onto bracket by inserting the table tubes into the bracket. Place chest pad onto table tubes and tighten securely. **For Shadow Tray adjustments, see p. 35.**

Configuration Assembly-Mobile



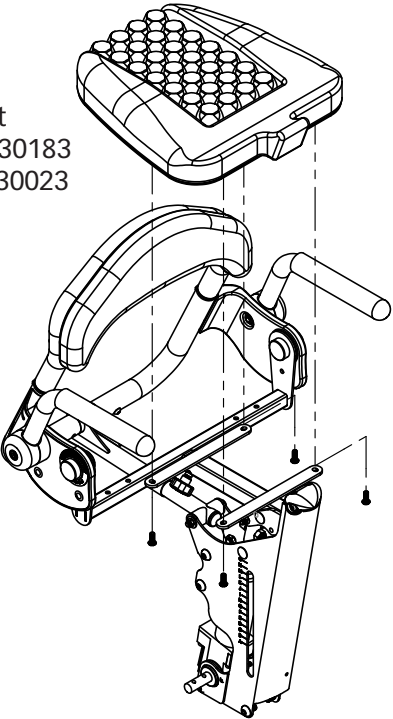
Basic Unit Reference Drawing- EasyStand® Evolv™



Option Assembly-Roho® Seat and Hip Supports

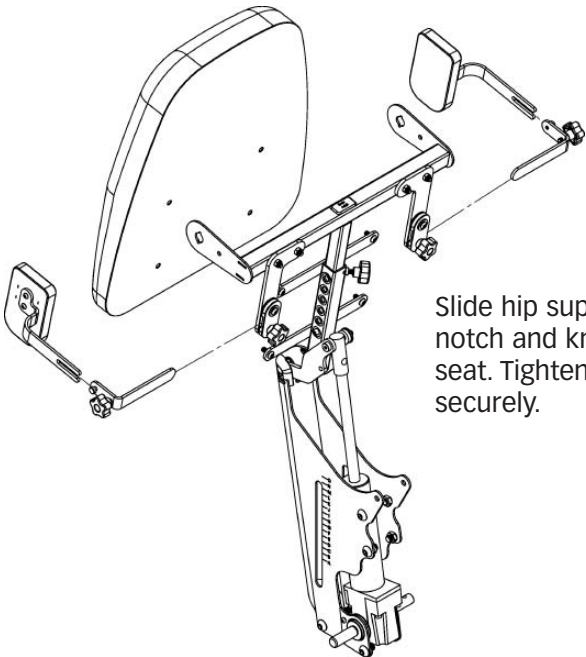
Roho® Seat
Evolv Youth-PNG30183
Evolv Adult-PNG30023

Install the seat onto the seat assembly after all the other options are added. For easier installation, pump the seat halfway up. Tighten the bolts securely.



Hip
Supports
10"-16"W
PNG50161

Hip
Supports
12"-18"W
PNG50198



Slide hip supports onto notch and knob under seat. Tighten knob securely.

FIG. 16

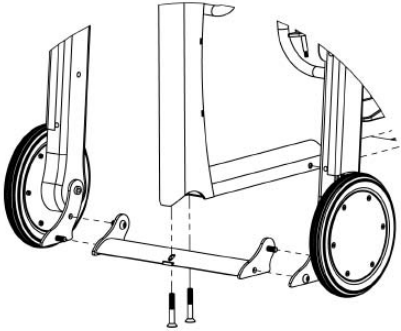
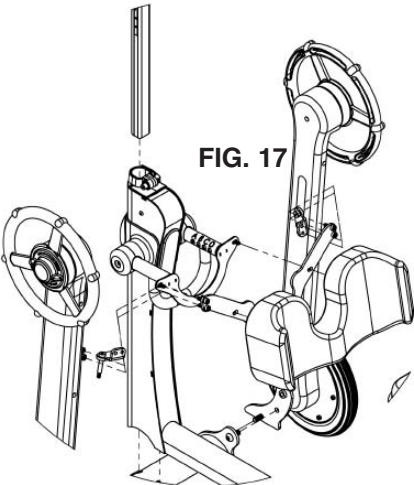


FIG. 16- To help with assembly, place a block of wood under the unit to raise the caster frame. Line up the two bolts to the holes of the caster frame, start both bolts before tightening securely. Take the left side mobile assembly and place onto the caster frame.

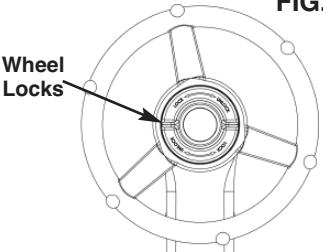
FIG. 17



Line up holes and insert top bolt through the inside as shown. Place the nut onto the bolt and hand tighten. Line up holes and insert bottom bolt through the outside as shown. Hand tighten the nut onto the bolt then tighten both bolts securely with a 19mm wrench and hex wrench. Repeat on the opposite side before going onto the next step.

FIG. 17- Insert kneepad bracket into column by depressing the spring button. Place mobile bracket onto the kneepad bracket. Place kneepad onto the mobile bracket.

FIG. 18



Insert 3 bolts into the bottom of the kneepad. Tighten bolts securely. Remove bolts from mobile bracket. Flip down kneepad and align bracket on mobile wheels. Tighten bolts and nuts securely with 13mm wrench and hex wrench. Repeat steps on the opposite side before going onto the next step.

FIG. 18- Your Mobile is equipped with wheel locks for safety in transferring and stability while performing stationary activities. Note the directional arrows imprinted in the center hub of each handrim.

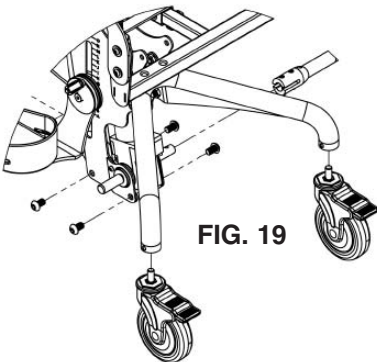
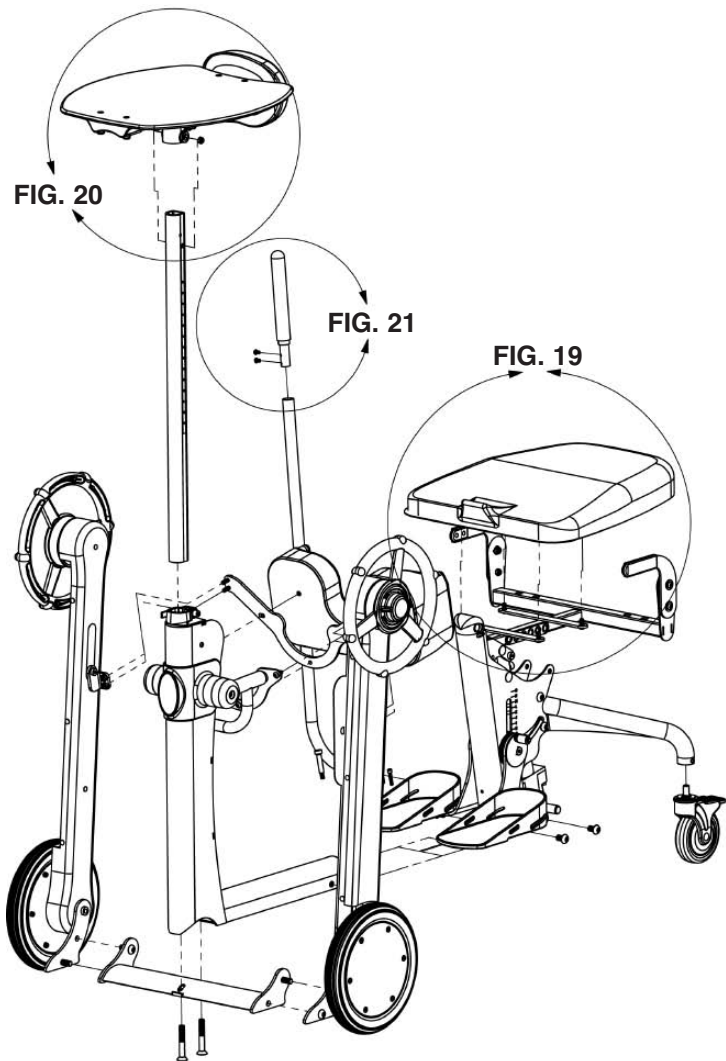


FIG. 19- Attach the casters to the rear seat assembly and tighten using the wrench provided, do not overtighten.

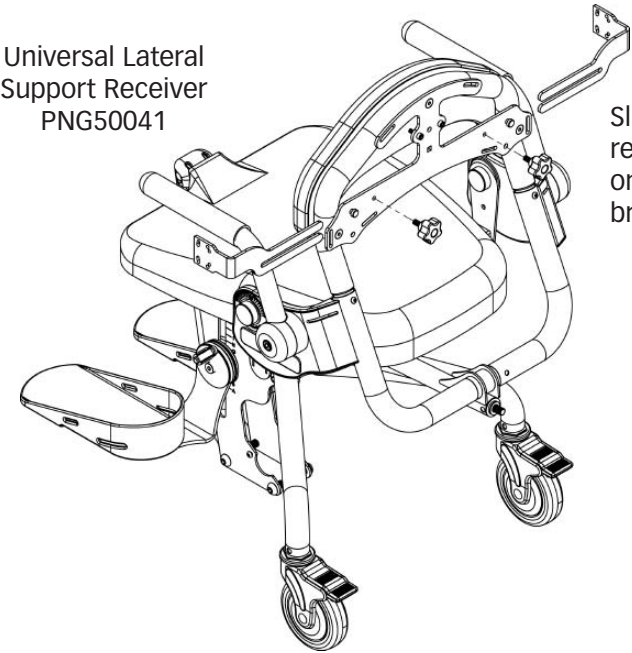
Slide the front column into the opening of the seat assembly as shown. Start all four bolts first, then tighten securely.

Lift seat up and flip down footplates. Then insert ratchet handles into footplates. Tighten securely.

Configuration Assembly-Mobile (cont.)



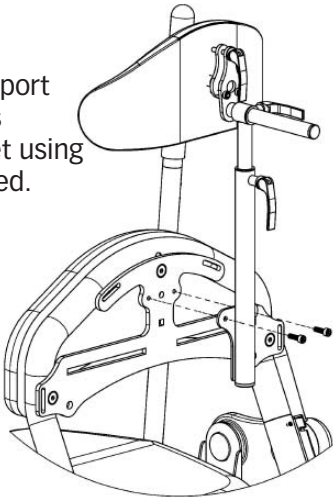
Universal Lateral Supports Receiver, Head Support, and Lateral Supports



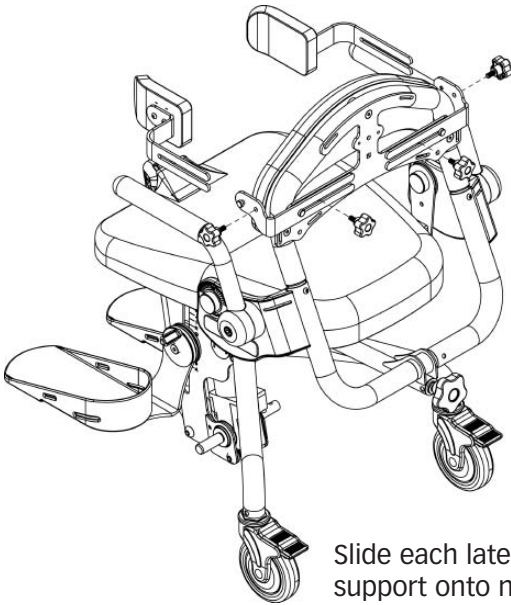
Slide each lateral support receiver onto notch and knob on the accessories mounting bracket. Tighten securely.

Lateral Supports 9"-15"W PNG50224 Lateral Supports 12"-18"W PNG50176

Secure head support onto accessories mounting bracket using two bolts provided. Tighten securely.



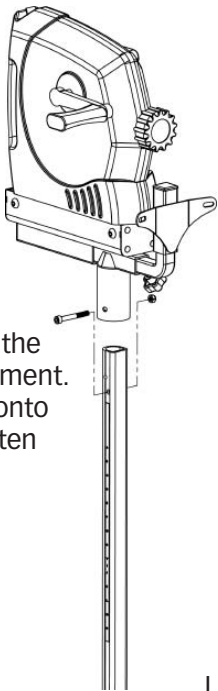
Head Support 21"-30"H PNG50240 Head Support 24"-33"H PNG50037



Slide each lateral support onto notch and knob on the accessories mounting bracket. Tighten securely.

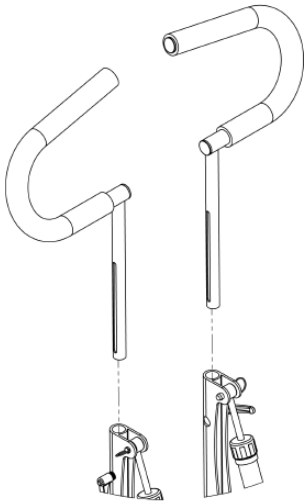
Option Assembly-Hand Cycle Attachment and Glide Handles

Hand Cycle Attachment
PNG50045

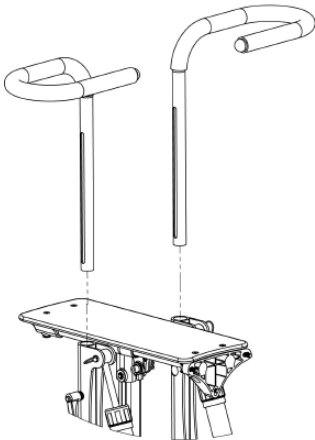


Remove bolt from the Hand Cycle Attachment. Place Hand Cycle onto table column. Tighten securely.

Glide Handles
Left Side-PNG10194
Right Side-PNG10196
(Evolv Adult only)



Glide Handle Extensions
PNG50251
(Evolv Youth only)



Standard Glide Handles
PNG10177
(Evolv Youth only)

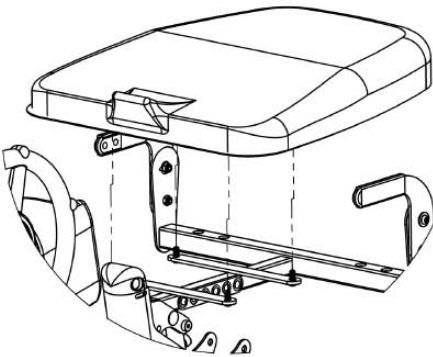
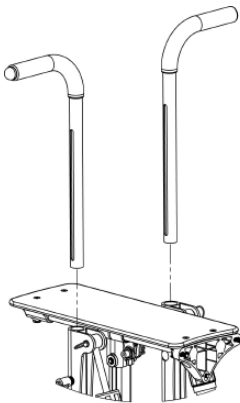


FIG. 19

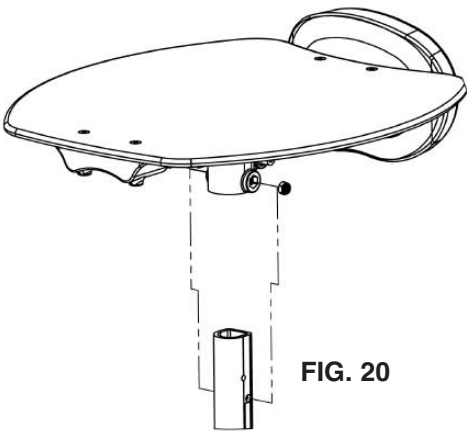


FIG. 20

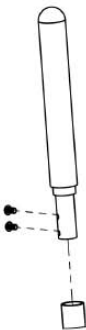


FIG. 21

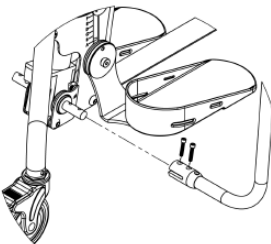


FIG. 19- If you ordered any additional options, please refer to the drawings on p.15-27. Install the seat onto the seat assembly after all the other options are added. For easier installation, pump the seat halfway up. Start all four bolts first then tighten securely.

FIG. 20- Insert the tray post into the front column. Holes in the post must face upward. Place tray onto the tray post, insert nut into slot and tighten securely.

FIG. 21- Remove the bolts from the pump handle, install it onto the pump on the main frame and tighten securely. Insert top of handle into pump handle and tighten securely.

Option Assembly-Pow'r Up Lift

The unit will arrive to you unplugged from the battery, you need to plug in the white cord that supplies power to the actuator and the black cord that supplies power to the remote. The black cord has a notch on it orient the connector properly. Fully charge battery before use.

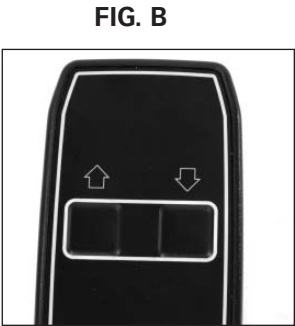
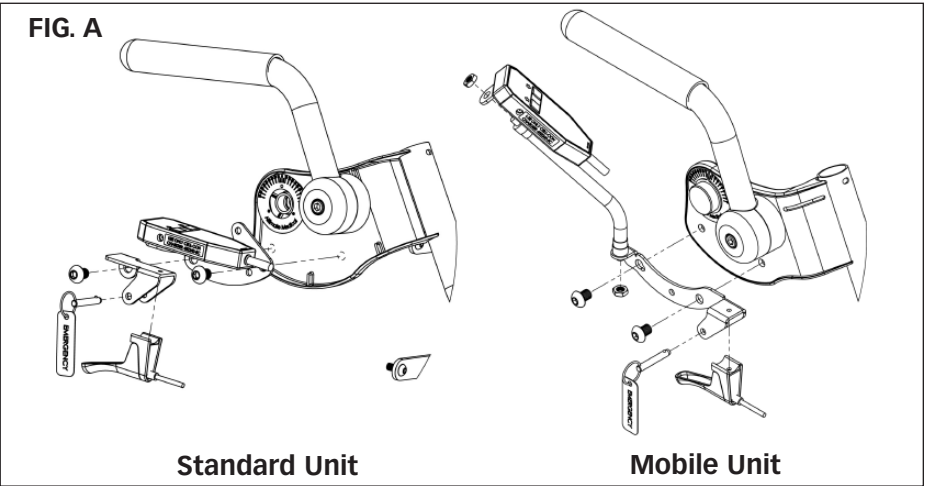


Raising/Lowering the Pow'r Up Lift Option

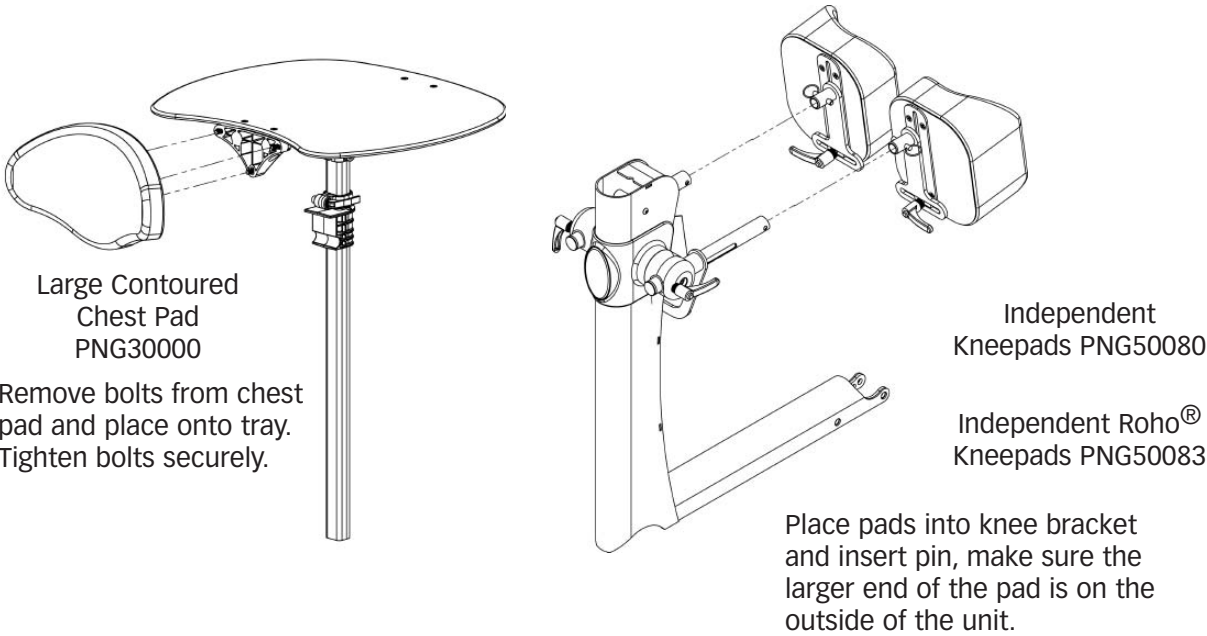
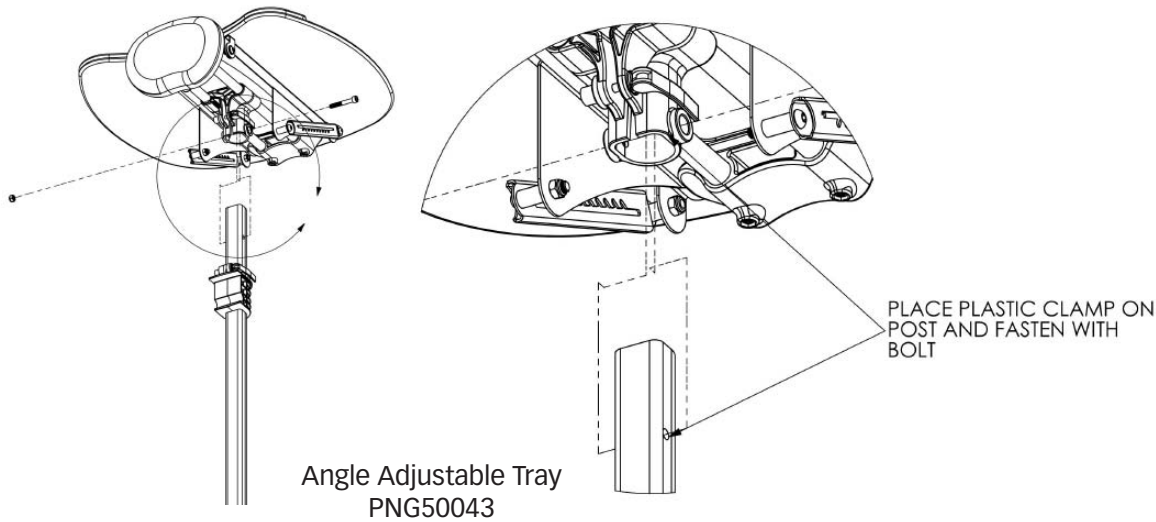
WARNING! THE EVOLV POW'R UP OPTION IS NOT DESIGNED FOR CONTINUOUS USE.
Duty Cycle 10% Max, 1 min. / 19 min.

FIG. A Assemble the hand control onto the unit in reference to the drawing.

FIG. B Raising the Lift
Press the UP (arrow up) button on the hand control to lift the seat.
Lowering the Lift
Press the DOWN (arrow down) button on the hand control to lower the seat.

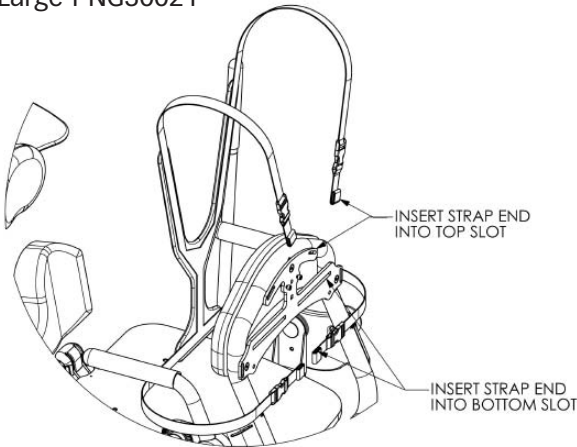


Angle Adjustable Tray, Chest Pad and Independent Kneepads

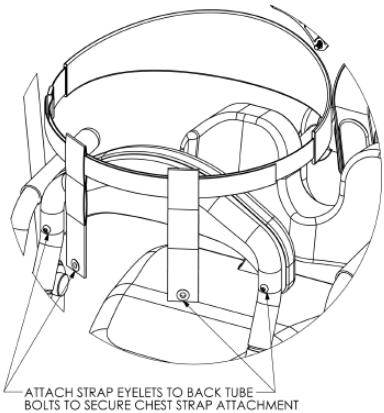
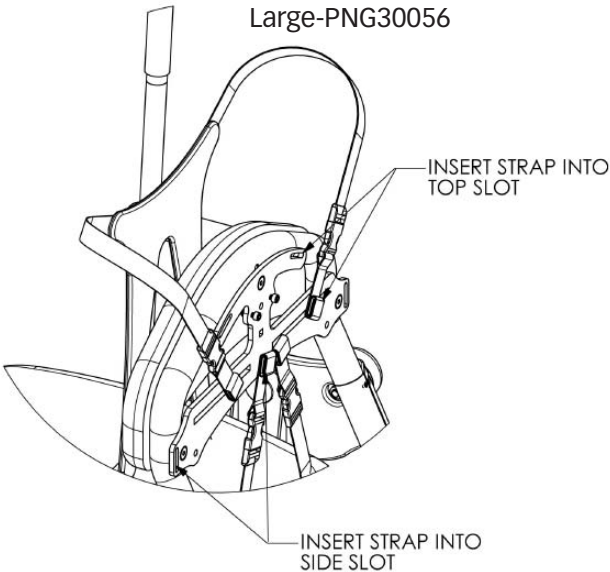


Option Assembly- Chest Vests and Chest Straps

Y-Style
Chest Vest
Medium-PNG30171
Large-PNG30021



X-Style
Chest Vest
Medium-PNG30170
Large-PNG30056



Chest Strap
Small-PNG50192
Large-PNG50193

Activating the Mechanical Emergency Release

⚠ CAUTION: USING THE EMERGENCY MECHANICAL RELEASE AS THE PRIMARY MEANS TO RETURN TO THE SEATED POSITION CAN CAUSE DAMAGE TO YOUR UNIT. ONLY USE THE MECHANICAL RELEASE IN EMERGENCY SITUATIONS.

All Altimate Medical electric lift products are equipped with a mechanical release to be used in emergency situations.

FIG. C-The release allows the user to be lowered to a seated position in the unlikely occurrence of the battery losing charge while the user is in a standing position. The actuator only retracts if the release is pulled and there is weight on the seat. The release is located on the left side of the seat and is signified by a red tag with the word "EMERGENCY".

1. To activate the emergency mechanical release pull out the quick release pin located on the left side of the seat.
2. Squeeze the handle and if necessary, push down on the seat.

FIG. C



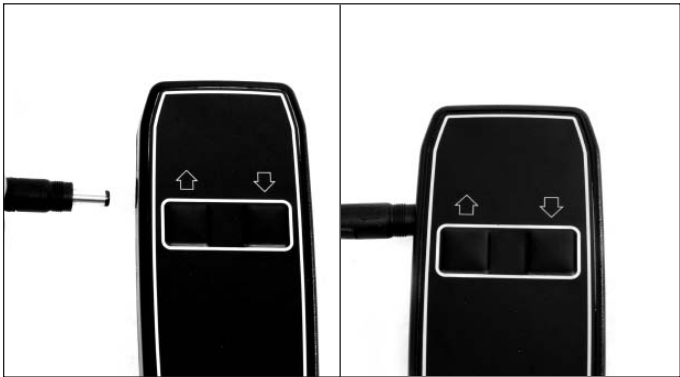
Charging the Battery

FIG. D- The EasyStand Evolv Pow'r Up Lift uses two 12 volt sealed lead batteries rated at 2.9 amps each. An EasyStand Evolv can be lifted approximately 100 times on one full battery charge. An audible alarm will sound when the battery is low. A battery needing to be fully recharged will take approximately 8 hours. The EasyStand Evolv can be raised to the standing position while being charged. The function of the charger is to detect a full battery and then provide a constant potential power supply to hold the battery at a full condition without overcharging it. When the battery EMF rises to a factory-preset point, the charger circuit will not allow the peak output voltage to exceed that value. This factory setting protects a battery from excessive depletion of electrolyte, which can occur from overcharging.

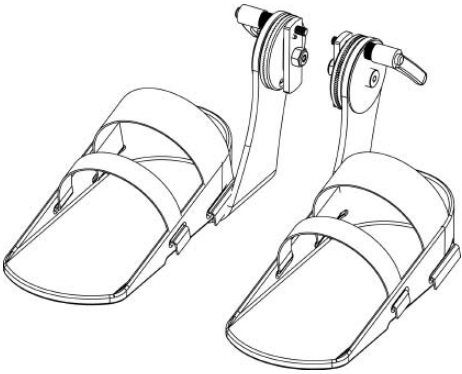
⚠ WARNING: USE ONLY CELL-CON MODEL # 452240-SC FOR CHARGING THE EASYSTAND EVOLV POW'R UP OPTION.

- 1. Plug the receptacle into a wall outlet. The light on the charger will be green indicating an open circuit.
- 2. Plug the charger cord into the side of the hand control. The light on the charger will turn red indicating the batteries are being charged.
- 3. When the batteries are charged, the light on the charger will turn green.

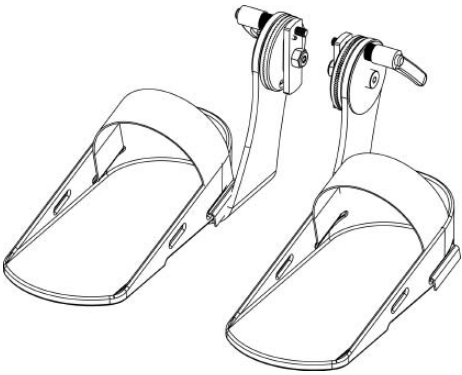
FIG. D



Foot Straps, Airline Buckle Hip Belt, and Velcro Hip Belt

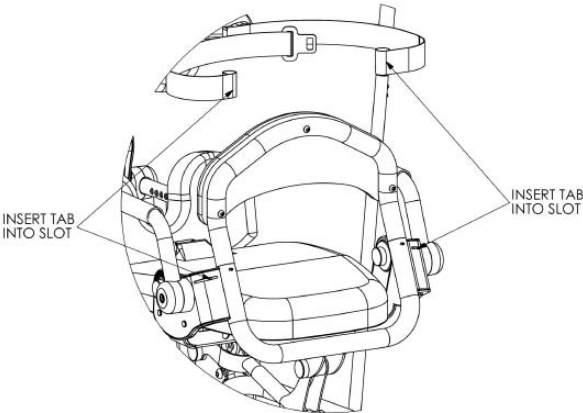


Secure Foot Straps
PNG30031

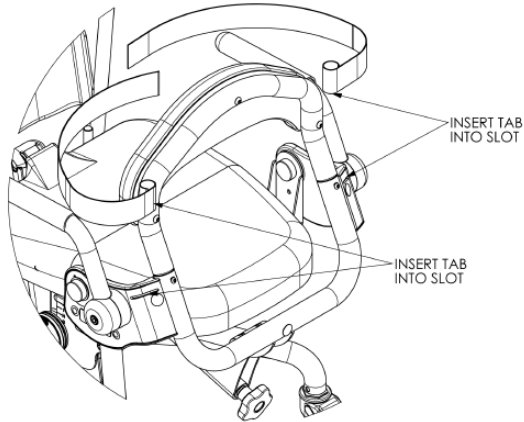


Standard Foot Straps
PNG30030

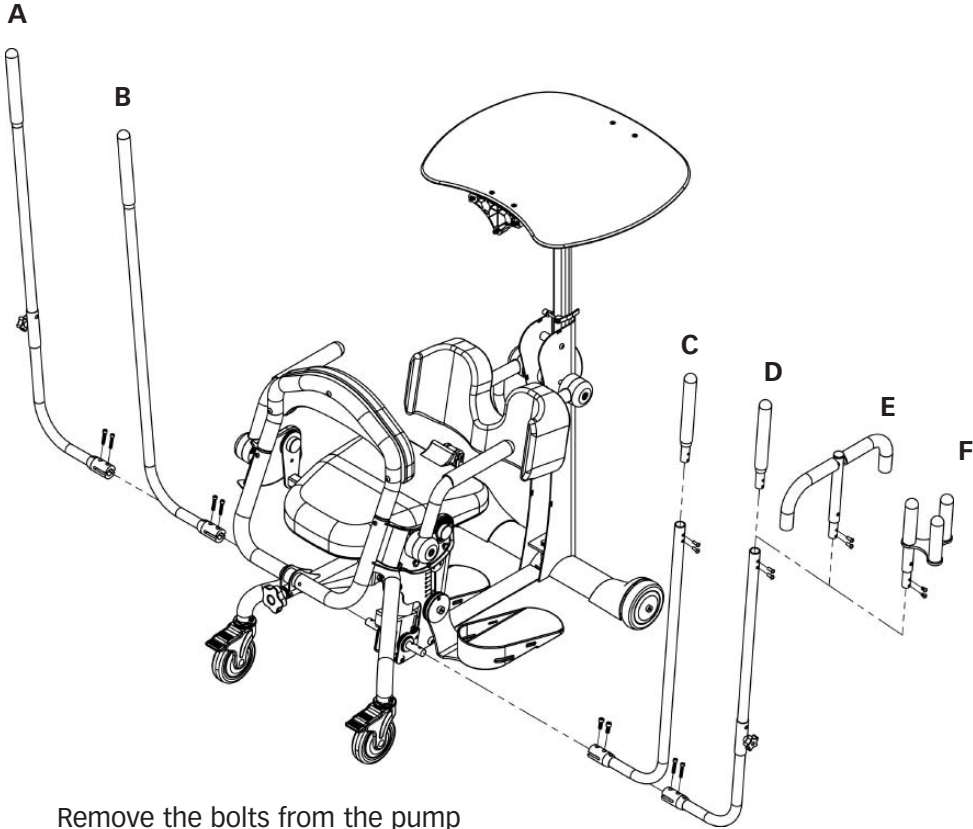
Airline Buckle Hip Belt
PNG30028



Velcro Hip Belt
PNG30029



- A
Removable
Actuator
Left Handle
PNG50127
- B
Standard
Actuator
Left Handle
PNG50126
- C
Standard
Actuator
Right Handle
PNG50059
- D
Removable
Actuator
Right Handle
PNG50035
- E
T-Style
Handle
Extension
PNG50070
- F
Quad Grip
Handle
Extension
PNG50044



Remove the bolts from the pump handle. Insert the handle onto the pump. Line up holes and insert bolts. Tighten securely.

Battery Replacement

FIG. E-Once the batteries have reached the end of their useful life they are considered hazardous waste. Please contact your local recycling authority for information on disposing of your batteries.

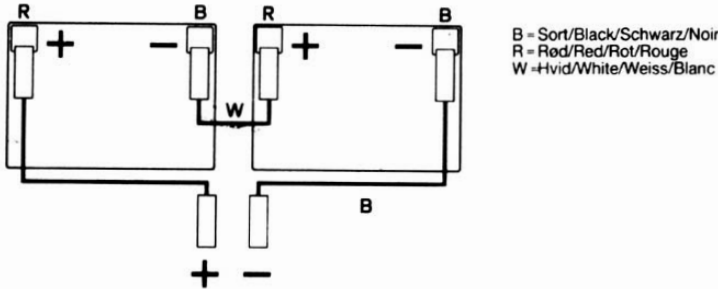
! WARNING: ALTIMATE MEDICAL STRONGLY RECOMMENDS THAT BATTERY REPLACEMENT BE PERFORMED BY A QUALIFIED TECHNICIAN. WARRANTY WILL BE VOIDED IF IDENTICAL BATTERY IS NOT REPLACED.

- 1. If necessary, remove the charger from the hand pendant.
- 2. Take the cover off the control box to access the batteries and wiring.
- 3. Remove the plug connecting the batteries to the control box.
- 4. Remove the batteries.
- 5. Replace the batteries with the identical type.
- 6. Remount the wires to the batteries and insert the plug into the control box.

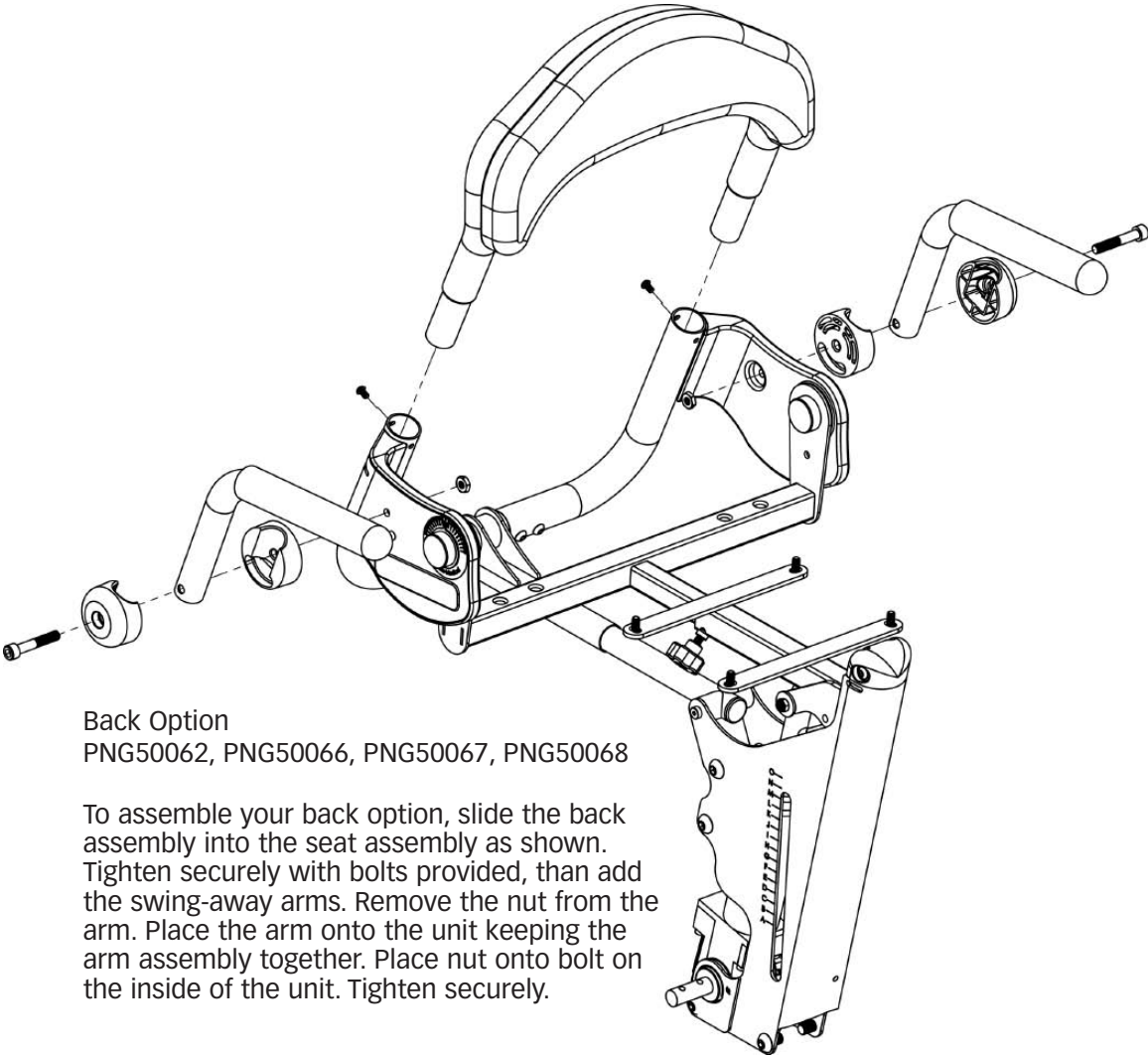
FIG. E

Udskiftning af batteri på CB 08-0A/Replacement of battery in CB 08-0A/ Auswechslung der Batterie in CB 08-0A/Remplacement des batteries du CB 08-0A.

- 1. Fjern lader/Remove charger/Lader entfernen/Enlever le chargeur.
- 2. Træk stik ud/Pull plug out/Stecker ausziehen/Tirer sur la fiche repérée.
- 3. Fjern alle batterier samt disses ledninger/Remove all batteries with wires/Alle Batterien mit Leitungen entfernen/Enlever toutes les batteries avec leur fils de liaison.
- 4. Skift alle batterier til samme eller tilsvarende type/Replace all batteries by same or identical type/Alle Batterien durch denselben oder ähnl. Typ ersetzen/Remplacer les batteries par des nouvelles identiques.
- 5. Monter ledninger og stik som vist/Remount wires and plug as shown/Leitungen und Stecker wie gezeigt montieren/Reconnecter les fils de liaison et la fiche comme indiqué sur le schéma.
- 6. Påse at evt. pakning er korrekt monteret/Check that seal, if any, is correctly mounted/Dafür Sorge tragen, dass eine eventuelle Dichtung korrekt montiert ist/Vérifier que le joint d'étanchéité du carter, s'il existe, est correctement placé.



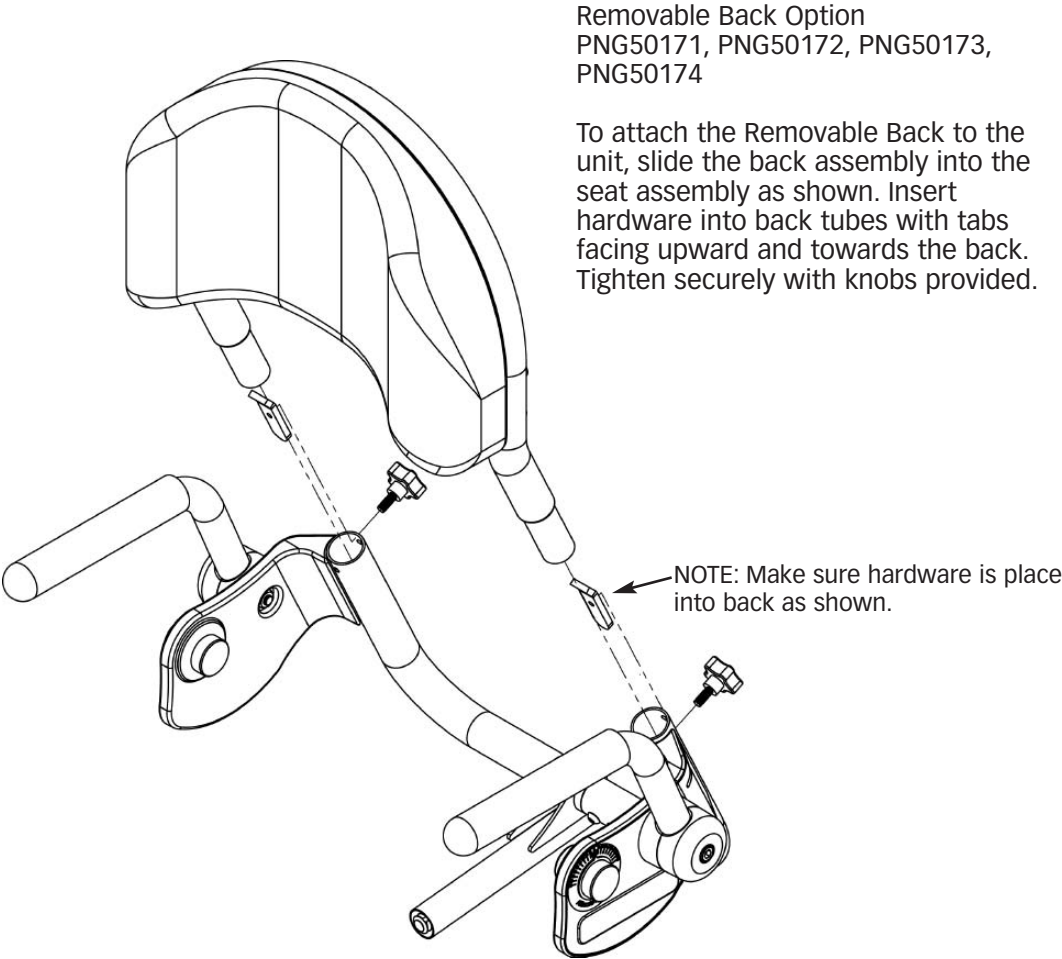
Option Assembly-Back Options



Back Option
PNG50062, PNG50066, PNG50067, PNG50068

To assemble your back option, slide the back assembly into the seat assembly as shown. Tighten securely with bolts provided, then add the swing-away arms. Remove the nut from the arm. Place the arm onto the unit keeping the arm assembly together. Place nut onto bolt on the inside of the unit. Tighten securely.

Back Options



Removable Back Option
PNG50171, PNG50172, PNG50173,
PNG50174

To attach the Removable Back to the unit, slide the back assembly into the seat assembly as shown. Insert hardware into back tubes with tabs facing upward and towards the back. Tighten securely with knobs provided.

NOTE: Make sure hardware is place into back as shown.