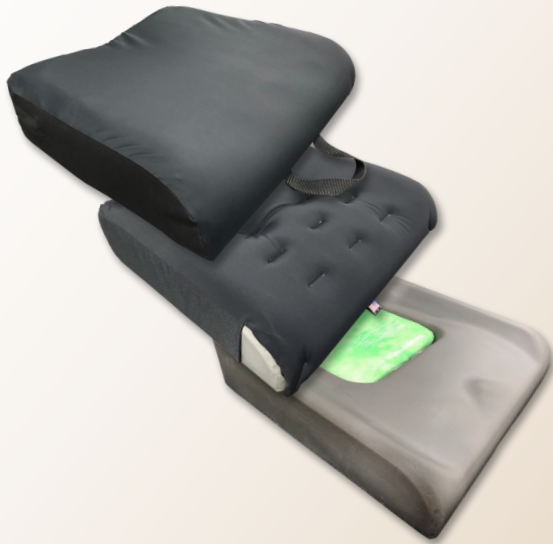




PRECISION
COMFORT

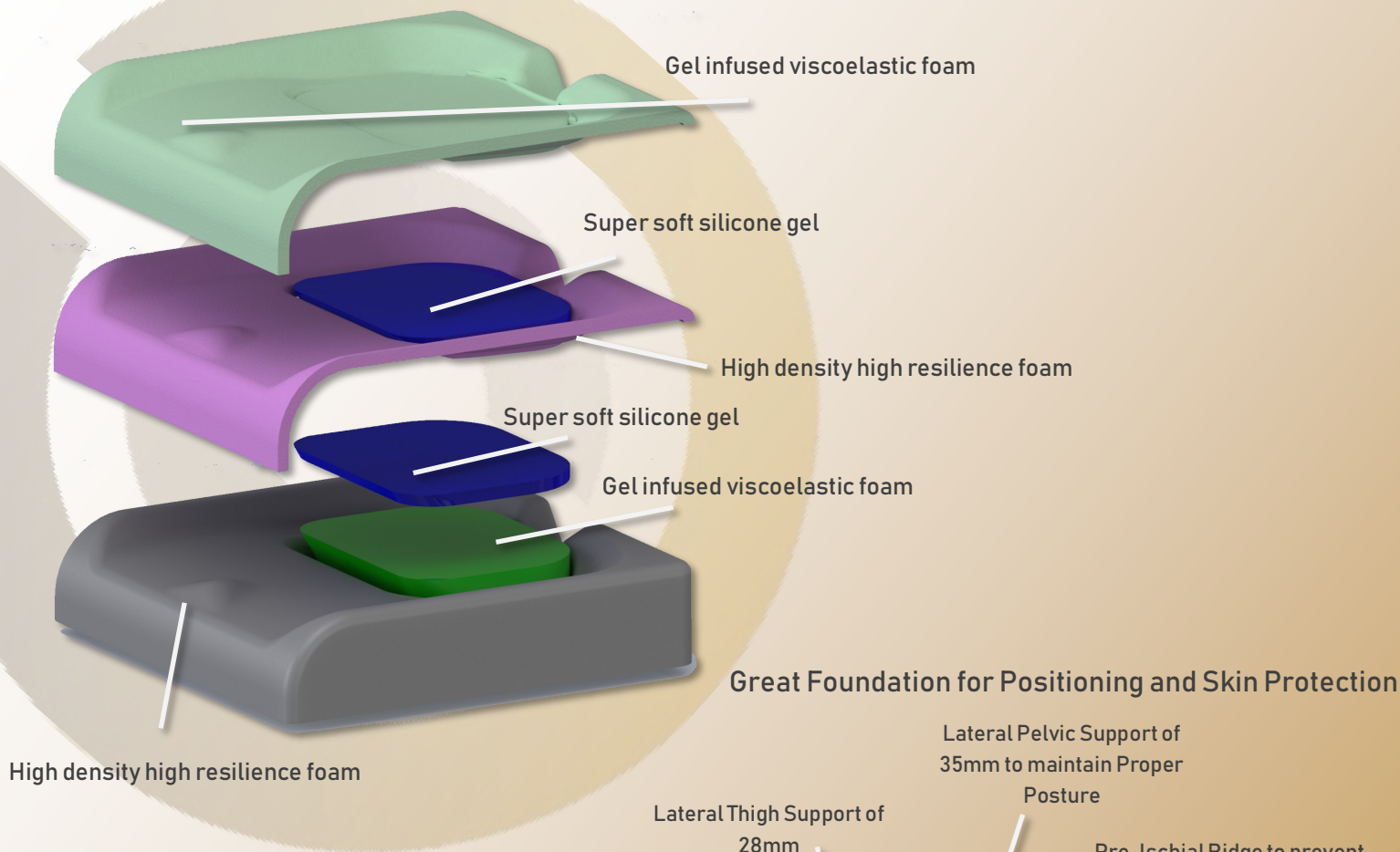
DEEP



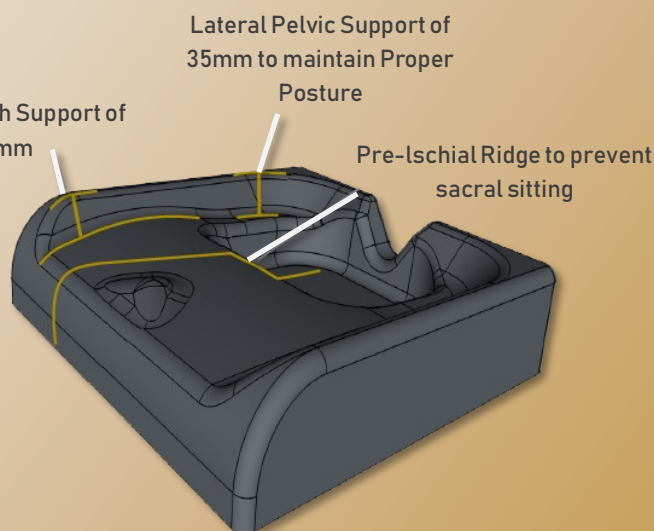
Features and Benefits

- Gel-infused viscoelastic upper foam inside overlay to help keep the skin cool and comfortable
- Removable gel overlay designed to stay in place to allow the clinician to modify the base for a custom fit
- Ergonomic contour which helps maintain proper posture and reduces fatigue
- High-density, high-resilience foam for long lasting support
- Deep well to allow deep submersion of the IT and coccyx for great skin protection at these vulnerable points. Also to help prevent sacral sitting and promote proper posture
- Super soft silicone gel layer on gel-infused visco insert in the well to envelop the bone structure for superior pressure reduction
- Super soft silicone gel insert in overlay which forms to the IT and coccyx for pressure reduction and prevents shearing
- HD high-resilience base foam around the gel insert in overlay to help support the greater trochanter and femurs for enhanced pressure reduction
- Moisture wicking, four-way stretch, and fluid resistant cover which keeps the person dry and comfortable while allowing them to form into the gel and visco insert properly





- Custom sizes
- Replaceable and billable base, insert and overlay
- 2 year warranty



PC Size Chart													
		WIDTH											
DEPTH		14"	15"	16"	17"	18"	19"	20"	21"	22"	23"	24"	
	14"	SD	CS	SD	CS	CS	CS	CS	CS	CS	CS	CS	CS
	15"	CS	CS	CS	CS	CS	CS	CS	CS	CS	CS	CS	CS
	16"	SD	CS	SD	CS	SD	CS	SD	CS	CS	CS	CS	CS
	17"	CS	CS	CS	CS	CS	CS	CS	CS	CS	CS	CS	CS
	18"	SD	CS	SD	CS	SD	CS	SD	CS	SD	CS	SD	CS
	19"	CS	CS	CS	CS	CS	CS	CS	CS	CS	CS	CS	CS
	20"	CS	CS	SD	CS	SD	CS	SD	CS	SD	CS	SD	CS
	21"	CS	CS	CS	CS	CS	CS	CS	CS	CS	CS	CS	CS
	22"	CS	CS	CS	CS	CS	CS	CS	CS	SD	CS	SD	CS
	23"	CS	CS	CS	CS	CS	CS	CS	CS	CS	CS	CS	CS
	24"	CS	CS	CS	CS	CS	CS	CS	CS	SD	CS	SD	CS

SD

Standard Size

CS

Custom Size

HCPCS: E2607: 14"x14" - 20"x20"

HCPCS: E2608: 22"x18" - 24"x24"