

Maintenance Service Manual



MODEL: EC-366



By Customer Service Department

V. Malfunction catalog

Common Trouble and processing Methods are listed as follow:

Serial NO.	Phenomenon	Description	Maintenance Methods
01	No Function When Starting.	The LCD isn't illuminating: ① Fuse melts (in the Power Source Box or on the transformer wire). ② Power supply circuit poorly connected. ③ main PCB fails.	① Replace Fuse. ② Replace Power Box. ③ Replace main PCB.
02	No function when starting.	The LCD is illuminating: ① Mechanical switch fails or it's wire is opened. ② Up or Down Stroke Photo-electricity fails. ③ Main PCB fails. ④ Kneading is on without pressing any key when starting and no response by pressing other keys.	① Replace mechanical switch or it's wire. ② Replace Stroke Photo-electricity. ③ Replace the main PCB. ④ Width Inspection Board of PCB fails, replace it.
03	No Width switchover.	① The terminals of Width Inspection on main PCB and wires are poorly connected. ② The terminals of Width Inspection on massage mechanical and wires are poorly connected.	①&② Plug the terminal securely or replace the wires. ③ Replace Width Inspection. ④ Replace the main PCB.

		<ul style="list-style-type: none"> ③ Width Inspection fails. ④ Main PCB fails. 	
04	No Partial Function.	<ul style="list-style-type: none"> ① Height Inspection Terminal or wire poorly contacts. ② Height Counting Subassembly fails. 	<ul style="list-style-type: none"> ① Plug the terminal securely or replace the wires. ② Replace Height Counting Sub-assembly.
05	No Rolling.	<ul style="list-style-type: none"> ① Terminal or Wire Poorly Contacts. ② Down-stroke Photo-electricity Subassembly Fails. ③ Up-stroke Photo-electricity Subassembly Fails. ④ Rolling Motor Fails. ⑤ Main PCB Fails. 	<ul style="list-style-type: none"> ① Plug the terminal securely or replace the wires. ② Replace Down-Stroke Sub-assembly. ③ Replace Up-Stroke Sub-assembly. ④ Replace Rolling Motor. ⑤ Replace main PCB.
06	No kneading.	<ul style="list-style-type: none"> ① The terminals on main PCB and wires are poorly connected. ② Kneading motor fails. ③ Main PCB fails. 	<ul style="list-style-type: none"> ① Plug the terminal securely or replace the wires. ② Replace the kneading motor. ③ Replace main PCB.
07	No tapping.	<ul style="list-style-type: none"> ① The terminals on main PCB and wires are poorly connected. ② Tapping motor fails. ③ Main PCB fails. 	<ul style="list-style-type: none"> ① Plug the terminal securely. ② Replace the tapping motor.



蒙发利

EASEPAL 中国 · 厦门蒙发利科技集团有限公司

Xiamen Comfort Science & Technology GROUP Co., Ltd

			③Replace main PCB.
08	No response when pressing the keys on the remote controller.	①The terminals and wires are poorly connected. ②The PCB in the remote controller fails.	①Plug the terminal securely or replace the wires. ②Replace the remote controller.
09	Back rest cannot be reclined or raised	①The terminals of reclining actuator and wires are poorly connected. ②The reclining actuator fails. ③Main PCB fails.	①Plug the terminal securely. ②Replace reclining actuator. ③Replace main PCB.
10	Foot rest cannot be raised or lowered.	①The terminals of foot rest actuator and wires are poorly connected. ②The foot rest actuator fails. ③Main PCB fails.	①Plug the terminal securely. ②Replace foot rest actuator. ③Replace main PCB.
11	No vibration by the motors in the seat-pad.	①Print motors fail. ②The terminals and wires are poorly connected or the wires fail. ③Main PCB fails.	①Replace the print motor. ②Plug the terminal securely or replace the wires. ③Replace main PCB.
12	No gas charging in the seat-pad.	①The terminal of the snuffle valves and wires are poorly connected. ②The snuffle valves fail. ③The inflator pump fails. ④Main PCB fails.	①Plug the terminal securely. ②Replace the snuffle valves. ③Replace the inflator pump. ④Replace main PCB.



蒙发利

EASEPAL中国·厦门蒙发利科技集团有限公司

Xiamen Comfort Science & Technology GROUP Co., Ltd

13	No gas charging in the foot rest.	①The terminal of the snuffle valves and wires are poorly connected. ②The snuffle valves fail. ③The inflator pump fails. ④Main PCB fails.	①Plug the terminal securely. ②Replace the snuffle valves. ③Replace the inflator pump. ④Replace main PCB.
----	-----------------------------------	---	---

Table of Contents

1: Maintenance of the small pillow, big pillow and backrest pad	7
2: Disassembly of the fabric of the backrest.....	8
3: Disassembly of backrest.....	8
4: Maintenance of the rear cover and the front cover of the backrest.....	9
5: Disassembly of the Kneading motor	10
6: Disassembly of the massage mechanism.....	11
7: Disassembly of the up & down stroke photo-electricity.....	12
8: Disassembly of the Main PCB.....	13
9: Disassembly of the seat pad.....	14
10: Disassembly of the remote controller.....	15
11: Disassembly of the inflator pump.....	15
12: Disassembly of the air valves.....	16
13: Disassembly of the transformer.....	17
14: Disassembly of the recline actuator.....	17
15: disassembly of the arm rest cover.....	18
16: Disassembly of the side cover (upper and lower).....	19
17: Disassembly of the foot rest cover.....	20
18: Disassembly of the air bag and the vibration motor of the foot rest.....	21

Maintenance manual

1: Maintenance of the small pillow, big pillow and backrest pad

A: Take off the small pillow of the backrest pad.



Take off the small pillow

B: Unzip the zipper which connects the big pillow and the backrest pad. (As the picture below showed) Then we can take off the big pillow and change it.



Unzip the zipper here

C: Unzip the zipper which connects the backrest pad and the backrest..



Unzip the zipper here

D: Unzip the zipper which connects the backrest pad and the seat pad. Then you can take off the original backrest pad.



The backrest pad has been taken off

E: Take a new backrest pad, zip the zippers to connect the backrest pad with the backrest and

2: Disassembly of the fabric of the backrest

A: Unzip the zipper and separate the back pad from the backrest.



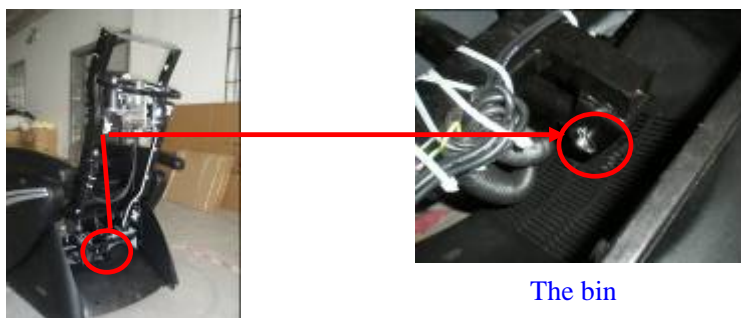
B: Find the two zippers at the bottom of the front back. Unzip these two zippers, then we can take the fabric off.



3: Disassembly of backrest

A: Take off the backrest pad. (Please refer to Maintenance of the backrest pad)

B: Take off the bin which connects the backrest and the binding mechanism.



The bin

C: Disconnect the two backrest wires (one is gray, one is black).



Backrest wire connectors

D: Pull the backrest vertically, then the backrest can be take off.



E: Raise the backrest vertically; fix the axletree on the each side of the backrest to the side panel slots. Then fix the bin and connect the backrest wire connectors.

4: Maintenance of the rear cover and the front cover of the backrest.

A: Take off these four screws, then we can take the rear cover off.

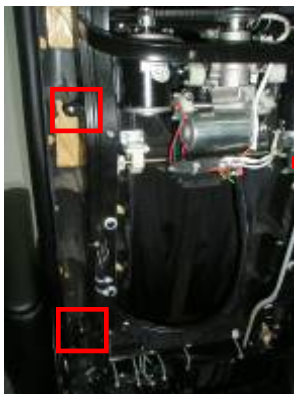


The position of the four screws



Rear cover has been taken off

B: Take off the four screws which fix the front cover to the frame, then we can take off the front cover.



2 screws in left side, the other two are in right side



5: Disassembly of the Kneading motor .

A: Take off these four screws, then we can take the rear cover off.



The position of the four screws

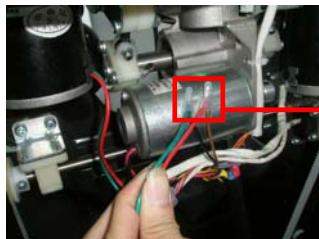
Rear cover has been taken off

B: Take off the kneading belt.



Kneading belt has been taken off

C: Cut the cable ties and peel the tube, then find the socket of jacks of the kneading motor.



The socket of jacks

D: Take the socket of jacks and disconnect the wire of kneading motor.

E: Take off the screws and then we can take the kneading motor away



F: Get a new kneading motor and fix it to the frame.

G: Then adjust the height of pulley, make sure the pulley and the wheel in the same level.



H: Fix the pulley and make sure it can not move up and down, then fix the kneading belt.



6: **Disassembly of the massage mechanism.**

A: Take off the backrest pad first; take off the rear cover & front cover of the backrest.



B: Turn on the chair, and let the massage mechanism move to the middle of the backrest.



C: Take off the kneading belt.

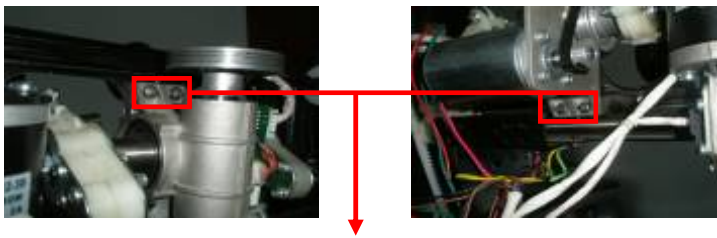
D: Cut the cable ties and peel the tube,



E: Cut the cable ties then disconnect the connector on the width inspection board.



F: Take off the four screws which fix the massage mechanism.



The screws fixing the mechanism

G: Turn the wheel to adjust the roller to narrow position, then take off the massage mechanism.

H: Take off the four screws to separate the tapping motor and the massage mechanism. Then we can take off the massage mechanism.



The four screws that fixing the tapping motor

7: Disassembly of the up & down stroke photo-electricity.

A: Take off these four screws, then we can take the rear cover off.

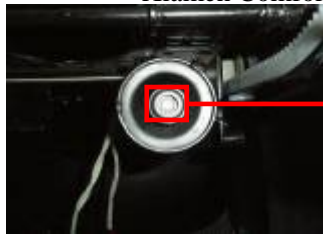


The position of the four screws



Rear cover has been taken off

B: Use a screw driver to turn the rolling motor, make sure the magnet not block the up stroke.



Turn the rolling motor at here

C: Disconnect the connector.



The connector of the up stroke limit sensor has been taken off

D: Take off the three nuts which fixing the limit sensor to the frame.



The nuts have been taken off

E: Get a new limit sensor and fix it to the frame then connect the connector. Test whether the up limit sensor works fine, And also we have to adjust limit sensor's position make sure the mechanism can not hit it.

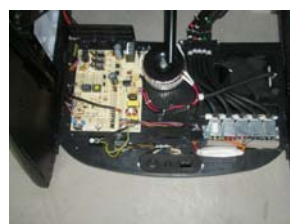


Make sure this part can not hit the up stroke limit sensor

8: Disassembly of the Main PCB .

A: Refer to Maintenance of backrest to take off the backrest.

B: Take off the 6pcs screws of the main PCB cover, then pull the PCB cover, then take it off.



C: Disconnect all the connectors on the Main PCB



D: With the help of a pliers, take off the main PCB.



9: Disassembly of the seat pad.

A: We can find the vibration motor connector below the seat pad , Disconnect it.



The vibration wire
connector.

B: Disconnect the air pipe of the seat pad. Then we can take the seat pad away.



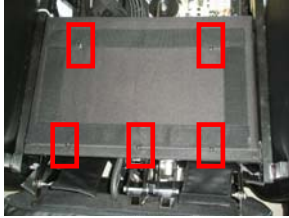
C: Unzip the zipper of the seat pad, then we can take the sponge out.



The sponge has been take out

10: Disassembly of the remote controller

A: Disconnect the vibration wire and the air pipe of the seat pad, then take off the seat pad.



The seat pad has been take away

B: Take off the five screws and then take away the panel.



The seat panel has been take off



Here is the remote control connecter

C: Cut the cable ties which fasten the remote controller wire to the frame.

D: Disconnect the connecter then we can take off the remote controller.



The remote controller

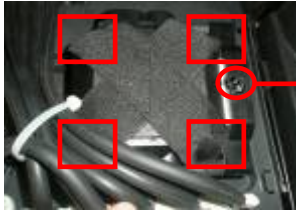
11: Disassembly of the inflator pump

A: Refer to Maintenance of backrest to take off the backrest.

B: Take off the 6pcs screws of the main PCB cover, then pull the PCB cover, then take it off.



C: Take off four screws which fixing the tie of the inflator Pump.



The pipe has been pull out

There is one screw in each pane

D: Cut the cable ties, then pull the pipe out

E: Cut the cable ties that fixing the inflator pump wire, then disconnect the connector.



Here is the inflator pump connector

F: Use a pliers to pull the rubber stander out, then you can take the inflator pump off.



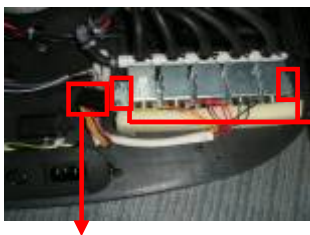
12: Disassembly of the air valves

A: Refer to Maintenance of backrest to take off the backrest.

B: Take off the 6pcs screws of the main PCB cover, then pull the PCB cover, then take it off.



C: Pull all the pipes out the pipes that connected to the air valve.



The four screws that fixing the air valve

The connector of the air valve

D: Cut the cable ties that fixing the wires of the air valves, then disconnect the connector of the air valve.

E: Take off the 4pcs screws that fixing the air valve.

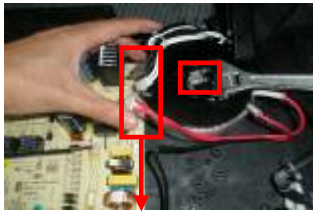
13: Disassembly of the transformer

A: Refer to Maintenance of backrest to take off the backrest.

B: Take off the 6pcs screws of the main PCB cover, then pull the PCB cover, then take it off.



C: Take off the bolt that fixing the transformer.



The connectors of the transformer
has been taken off

D: Cut the cable ties that fixing the output wires of the transformer.

E: Pull off the transformer connectors that connected to the main PCB. Then we can take off the transformer



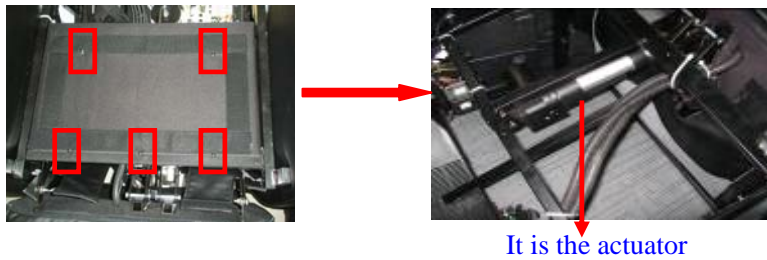
Transformer has been
taken off

14: Disassembly of the recline actuator

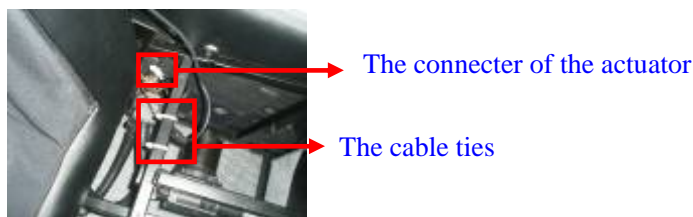
A: Refer to Maintenance of backrest to take off the backrest.

B: Disconnect the vibration wire connector of the seat pad, then disconnect the air pipes of the seat pad. Then we can take the seat pad away.

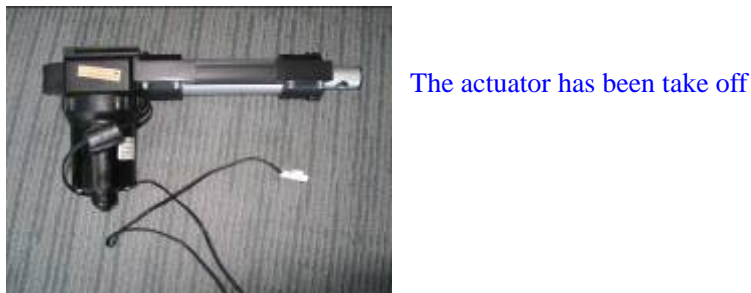
C: Take off the six screws then take the panel away, then we can see the recline actuator.



D: Disconnect the connector of the recline actuator. And then cut the cable tie which fixing the wire to the frame.

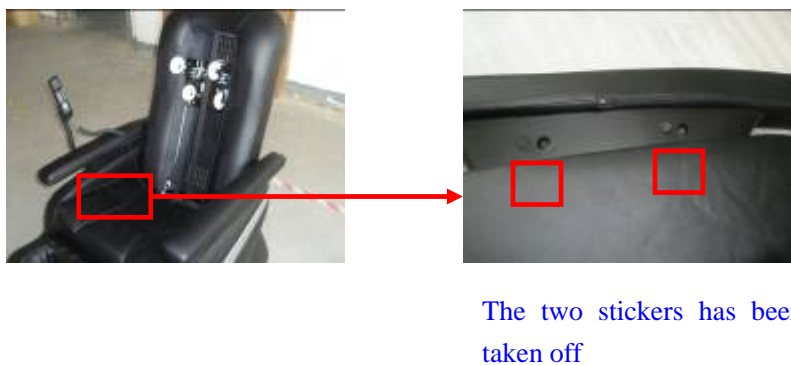


E: Take off the two bins which fix the actuator to the frame. Then we can take off the recline actuator.



15: Disassembly of the arm rest cover

A: Use forceps take off the stickers which are below the armrest (as the picture show), then we can see the screws.



B: Take off these two screws and pull the armrest upwards then we can take off the armrest.



The arm rest has been taken off

C: Unzip the zipper, then we can take off the armrest cover.



The zipper has been unzipped



The armrest cover has been taken off

16: Disassembly of the side cover (upper and lower)

A: Refer to Disassembly of backrest and take off the backrest.

B: Refer to Disassembly of remote controller and then take off the seat pad and the seat panel. Then we can see the screws that fixing the side panel(upper), 3pcs all together.



The position of the screws that fix the side cover to the frame.

C: Take off the five screws then we can take off the side board.



The side cover (upper) has been taken off

D: After the upper side cover has been taken off we can see the screws which fixing the side cover (lower).



E: Take off these screws then we can take the side cover(lower) off.



The side cover (lower) has been taken off.

F: There are three screws fixing a board to it. Take off these three screws and we can take away the board.



The board has been taken off.

17: **Disassembly of the foot rest cover.**

A: Refer to disassembly of the seat pad to take off the seat pad.

B: Take off the screws that fixing the seat panel, then take the seat panel away.

C: Disconnect the foot rest air pipes and the foot rest vibration motor wire connector. And cut the cable ties that fasten the pipes and the wire to the frame.



The cable ties that fasten the pipes

D: Take off the screws that fixing the foot rest to the frame. As picture show.



Taking the screw off

E: After take off the two screws, then we have to take off one bin. And then we can take the foot rest off.



Here is the bin

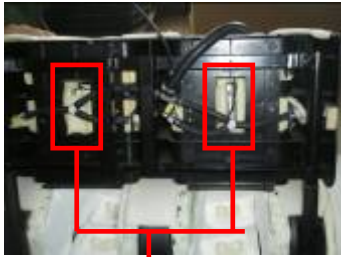
F: At the joint of upper foot rest and lower foot rest find the zipper and unzip the zipper, then we can take the foot rest cover off.



18: Disassembly of the air bag and the vibration motor of the foot rest.

A: Refer to the **Disassembly of the foot rest cover**; take off the foot rest cover.

B: At the rear side of the footrest we can see the connectors of the air bag and the footrest vibration motor. As the picture showed.



Vibration motors of the footrest



Air bags of the footrest

C: After the footrest cover has been taken off then we can change the vibration motor and the air bags.