

≡ Anatomically designed for customizable pressure reduction and positioning.



Pre-contouring



Provides pressure reduction, positioning and stability

Positioning Capability



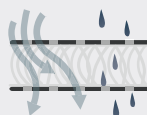
Provides proper positioning for postural needs

Tension Reduction



Tension-reducing materials maintain superior pressure reduction

Microclimatic Material



Allows the passage of air, heat and water from the user

Segmentation



Helps localize change to minimize instability and the spread of tension.

Hydrostatic Force



Equalizes loading forces to reduce peak pressures.

JAY J3 CUSHION

≡ The J3 cushion is designed with careful consideration for the Science of Seating.

The result: A cushion that features outstanding pressure distribution, reduced surface tension, heat and moisture dissipation, and optimal stability. Listed below are the technologies incorporated into the new cushion design.

JAY Optiwell™ Technology:

- Optimized Pelvic Loading Area (PLA) design allows the clinician to customize for the client's unique needs to either load the trochanters or float the pelvis

Factory Filled & Field Variable Fluid Inserts:

- Factory Filled for symmetrical postures and stable conditions where fluid volume is pre-established and standard
- Field Variable for more individualized evaluations to determine desired fluid volume and/or to accommodate changing needs

Redesigned Fluid-Pad Construction with New Pleating Geometry:

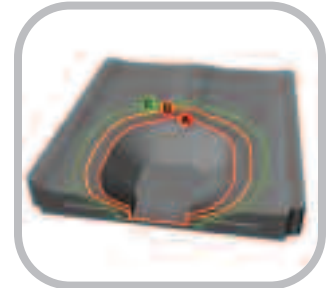
- Better pressure reduction with increased segmentation and optimal load redistribution

New Cover Technologies

- Patent Pending technique reduces surface tension in the cover
- Microclimatic cover option reduces heat and moisture build-up for healthier skin
- Improved "comfort layer" provides immediate and long term comfort

Quickie Bundling:

- The J3 can be ordered and shipped complete with a variety of Quickie manual and power chairs
- Complete clinical solution when combined with a J3 Back



SPECIFICATIONS

JAY®

JAY J3 Cushion	Standard	Deep
HCPCS Code	K0734/K0735 K0736/K0737	K0734/K0735 K0736/K0737
Weight	4.5 lbs. (16 x 18)	4.9 lbs. (16 x 18)
Product Width	12" - 24"	14" - 24"
Product Depth	12" - 24"	14" - 24"
Product Height	3.6" (unloaded) 3.0" (loaded - 175 lbs.)	4.1" (unloaded) 3.5" (loaded - 175 lbs.)
Weight Capacity	12" - 19" 330 lbs. 12" - 19" 330 lbs.	20" - 24" 500 lbs. 20" - 24" 500 lbs.
Cover Options	Microclimatic 3DX™ Spacer Fabric, Stretch and Incontinent	