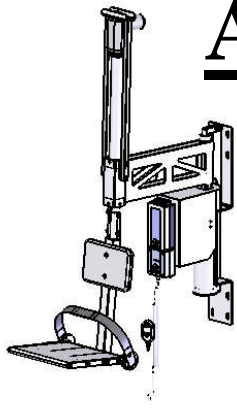
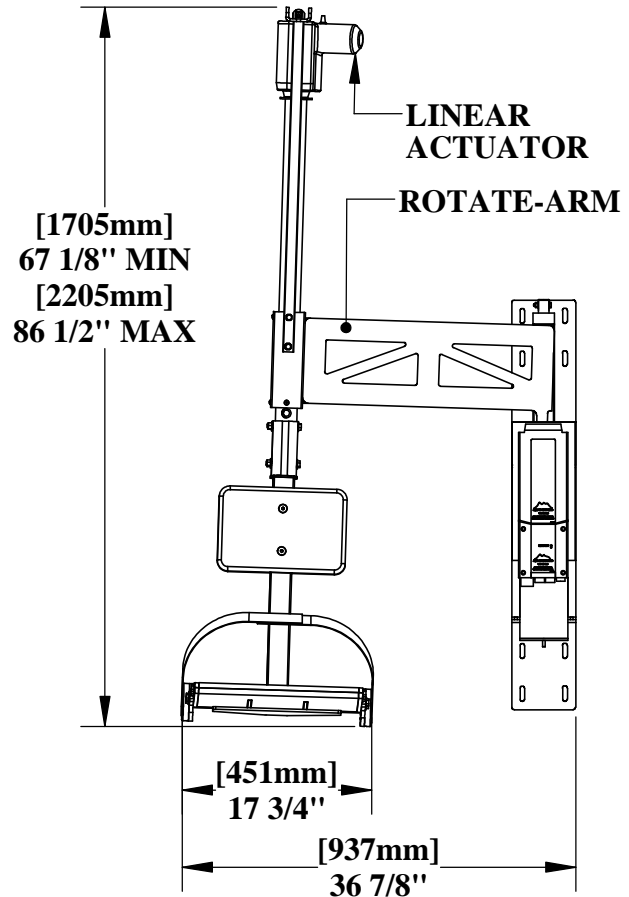
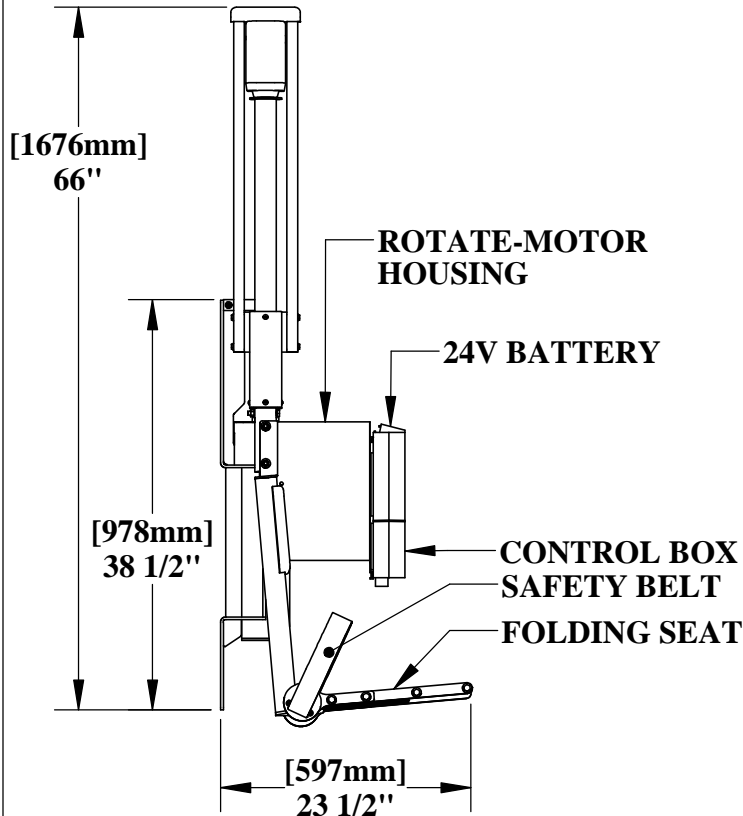
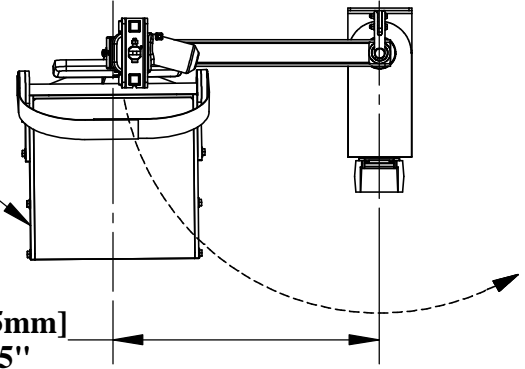


ABLE™ BATHTUB LIFT



"Aquatic-Bath-Lift-Elite"

SEAT ROTATES 180°
AND PIVOTS 360°



SPECIFICATIONS:

THE AQUA CREEK PRODUCTS ABLE BATHTUB LIFT SHALL BE A 24VDC BATTERY-POWERED LIFT FOR BATHTUBS AND SHALLOW SPAS. THE LIFT SHALL BE CONSTRUCTED FROM TYPE 304 STAINLESS STEEL, WITH A POLYETHYLENE SEAT AND SEAT BACK. IT SHALL HAVE A LIFTING CAPACITY OF 300 LBS [136 kg] AND SHALL BE TOTALLY SELF-OPERABLE. IT SHALL HAVE A 17-3/4" [450mm] WIDE SEAT, WHICH SHALL FOLD UP FOR SPACE SAVINGS. THE SEAT SHALL HAVE POWERED ROTATION AND LIFTING, AND SHALL PIVOT MANUALLY TO ALLOW FOR ALIGNMENT DURING MOVEMENT. IT SHALL HAVE A 19-5/8" [500mm] VERTICAL TRAVEL AND SHALL BE SUITABLE FOR BATHTUBS UP TO 22" HIGH (WITH 8-FOOT CEILING). A LIMITED LIFETIME WARRANTY IS STANDARD.

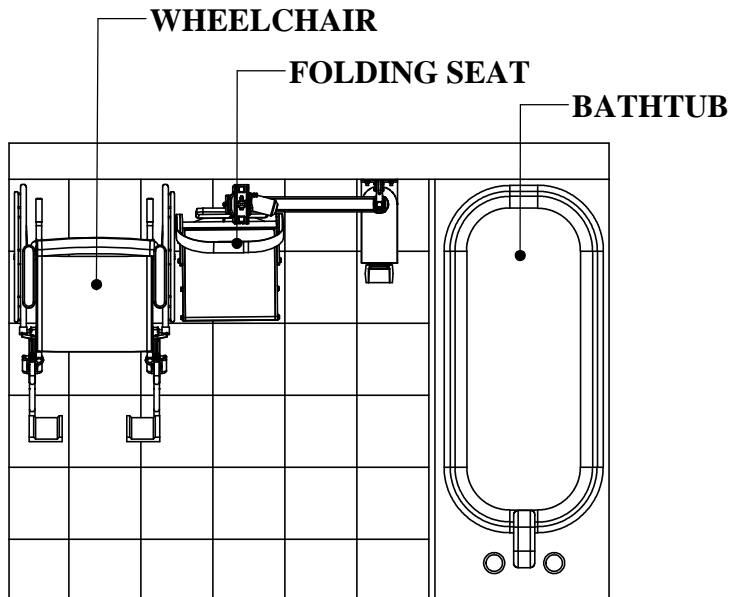


9889 GARRYMORE LANE
MISSOULA, MT 59808
(406) 549-0769
FAX (406) 549-2602

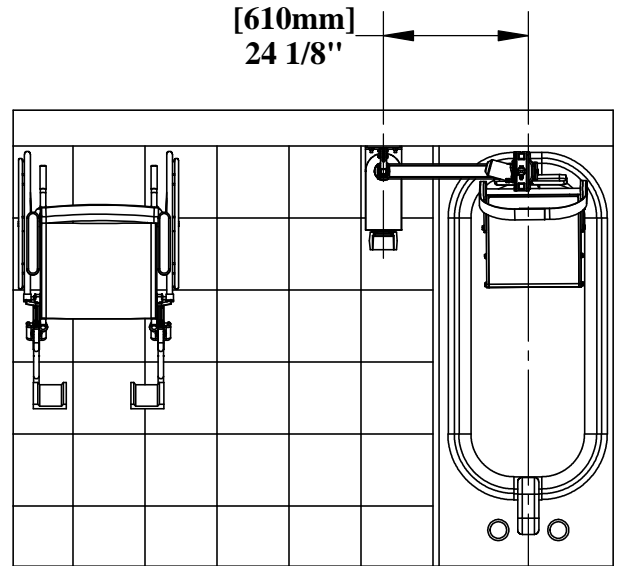
NOTE:
*SPECIFICATIONS ARE SUBJECT TO CHANGE WITHOUT NOTICE

PRODUCT:	F-25ABLE	
DWG #:	F-25ABLE-1	
SCALE:	1:24	DATE: 12/17/12
DRAWN BY:	KR	REVISION: D

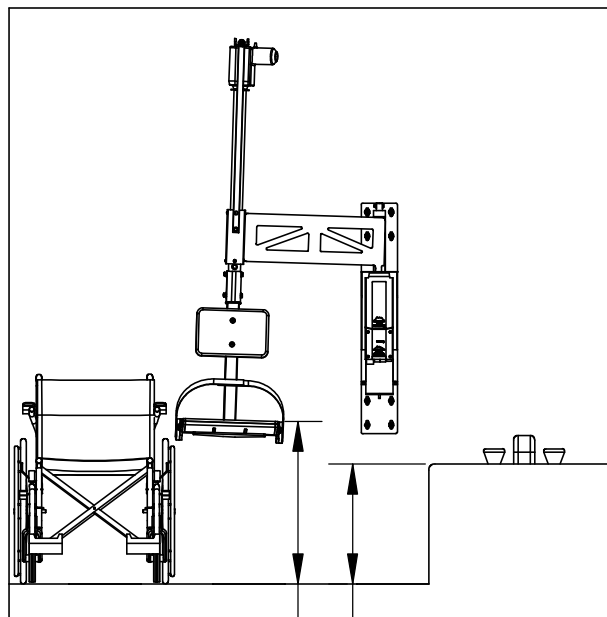
ABLE™ BATHTUB LIFT



LOADING POSITION
(ONE OPTION)

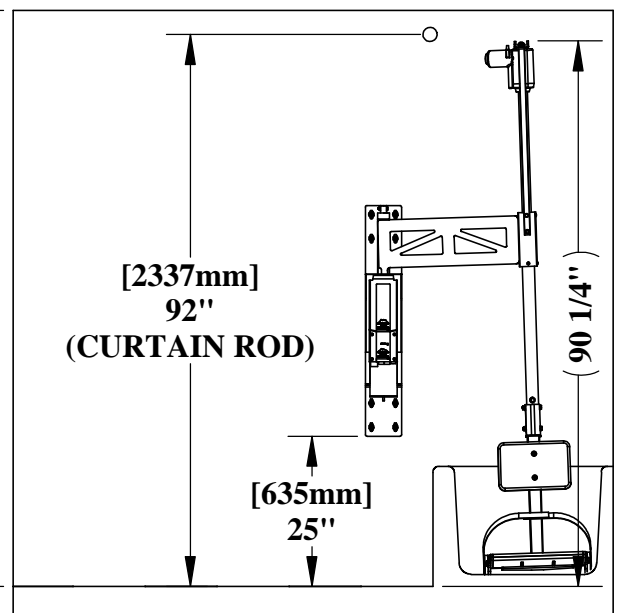
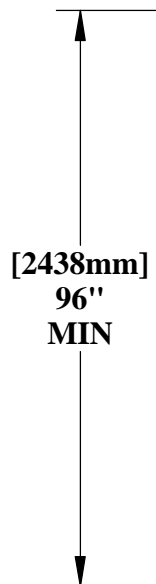


IN BATHTUB



SEAT HT.
(ADJUSTABLE)

[560mm]
22"
MAX TUB HT.



[2337mm]
92"
(CURTAIN ROD)

[635mm]
25"

90 1/4"

**NOTE: IF THE BATHTUB HAS
A SHOWER-CURTAIN ROD, IT
WILL NEED TO BE MOVED UP
TO 92" [2337mm] AS SHOWN.**

PRODUCT:	F-25ABLE		
DWG #:	F-25ABLE-2		
SCALE:	1:32	DATE:	12/17/12
DRAWN BY:	KR	REVISION:	D