



EZPZ-AT

Attendant Tilt

Mobile Shower Commode Chair

EZPZ mobile shower commode chairs offer exceptional comfort and function at an affordable price ... but with standard features that are normally found only on more expensive chairs! Features include:

- Tool-less height adjustment
- Flip-up arm supports
- 35° tilt range
- Contoured seat



EZPZ-AT
Attendant Tilt



EZPZ mobile shower commode chairs are exceptionally durable and easy to clean, ideal for infection-control environments.

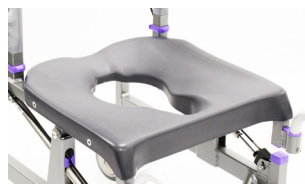
FEATURES



Corrosion-resistant aluminum frame with tool-less height adjustment



Head support with molded pad, adjusts in height and fore/aft



Contoured seat for best-in-class comfort



Swing-away, removable foot supports – facilitates transfers



Soft and flexible back support – comfortable and easy to clean



Flip-up arm supports – aids in transfers

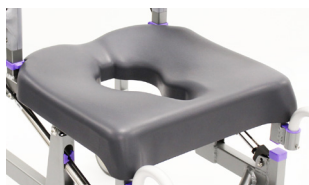


Dual-locking casters (swivel and roll) – stabilize chair for toileting, bathing and transfers



Commode pan with lid – includes anti-splash baffle and high-gloss surface to ease cleaning

OPTIONS



Soft seat overlay – molded and contoured for pressure distribution and comfort



Pelvic positioning belt with side-release buckle



Chest belt – 1-piece with side-release fastener



Snap-on Infection Control Calf Strap – dries quickly



Arm support locks – provide more security during transfers



Swing-away laterals – provide lateral trunk support

SPECS

SPECIFICATIONS	EZPZ-AT	
Weight Capacity	150 kg	330 lbs
Maximum Tilt Angle	35°	
Seat Width	50 cm	19.5"
Seat Depth (front of back post to front of seat)	43 cm	17"
Back Width	47 cm	18.5"
Back Height (from top of seat to top of upholstery)	43 cm	17"
Toilet Height Clearance	42 - 52 cm	16.5" - 20.5"
Toilet Width Clearance	43 cm	17"
Arm Support Height Above Seat*	23 cm	9"
Seat-To-Floor Height* – 2.5 cm (1") increments	51 - 61 cm	20" - 24"
Overall Width	58 cm	23"
Product Weight	18 kg	40 lbs
Frame Material	Aluminum	
* without soft seat overlay		