

Silver Sport 2 Wheelchair

HCPCS: K0001 / K0002-1, K0001 OR K0002

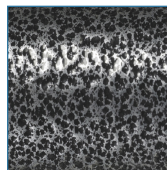


FIGURE A

- Powder-coated silver vein steel frame (Figure A)
- Embossed vinyl upholstery is durable, lightweight, attractive and easy-to-clean
- Urethane tires mounted on composite wheels provide durability and low maintenance
- 8" front casters, adjustable in three positions
- Padded armrests provide additional comfort
- Carry pocket on backrest provides additional convenience
- Comes with swing-away footrests or elevating leg rests with tool-free adjustable length riggings
- Plastic foot plates with heel loops on footrests
- Comes with push-to-lock wheel locks

PRODUCTS	Description
SSP216DDA-ELR	Silver Sport 2 Wheelchair, CS
SSP216DDA-SF	Silver Sport 2 Wheelchair, CS
SSP216DFA-ELR	Silver Sport 2 Wheelchair, EA
SSP216DFA-SF	Silver Sport 2 Wheelchair, EA
SSP218DDA-ELR	Silver Sport 2 Wheelchair, CS
SSP218DDA-SF	Silver Sport 2 Wheelchair, CS
SSP218DFA-ELR	Silver Sport 2 Wheelchair, CS
SSP218DFA-SF	Silver Sport 2 Wheelchair, EA
SSP218FA-ELR	Silver Sport 2 Wheelchair, CS
SSP218FA-SF	Silver Sport 2 Wheelchair, CS
SSP220DDA-ELR	Silver Sport 2 Wheelchair, CS
SSP220DDA-SF	Silver Sport 2 Wheelchair, CS
SSP220DFA-ELR	Silver Sport 2 Wheelchair, EA
SSP220DFA-SF	Silver Sport 2 Wheelchair, EA

SPECIFICATIONS	Description
Back Height	16"
Carton Shipping Weight	48 lbs. 49 lbs. 50 lbs.
Height	36"
Length with Riggings	42"
Product Weight with 16 Seat	40 lbs.
Product Weight with 20 Seat	42 lbs.
Product Weight with 18 Seat	41 lbs.
Seat Depth	16"
Seat To Floor Height	17.5" - 19.5"

SPECIFICATIONS	Description
Seat Width	16" 18" 20"
Warranty	Limited 3 Years
Weight Capacity	300 lbs
Weight Limit with 16 Seat	250 lbs.
Weight Limit with 18 Seat	300 lbs.
Weight Limit with 20 Seat	350 lbs.
Width Closed	12.5"
Width Open	24" 26" 28"
Arm Rest Type (s)	Detachable Desk Arm Detachable Full Arm Fixed Arm

ACCESSORIES	Description
STDS SSP-AA	Amputee Adapter Kit, SSP, 1/set, EA
STDS831	Heel Loops, 1 pr/bx, BX
STDS1034	Wheelchair Cane/Crutch Holder, 1/ea, EA
WASR	Limb Support, Right, 1/cs, CS
WASL	Limb Support, Left, 1/cs, CS
STDS801GT	WheelLockExtension, ViperGT, SSP2, 1/ea, EA
STDS806	Anti-Fold/Theft Device for w/c, 1/ea, BX
STDS820	Telescoping IV Pole, W/C, 1/bx, BX
STDS851	Seat Belt, Velcro Close, 1/ea, EA
STDS855	Seat Belt, 60" Auto-type, 1/ea, EA
STDS856	Seat Belt, 60" Velcro-type, 1/ea, EA
STDS850	Seat Belt, Clasp Type, 1/ea, EA
STDS818	Anti-Tippers, rear, Sentra Recliner, 1 pr/bx, BX
STDS833N	Rear Anti Tipper w. wheels SSP&CS, 1/pr, PR
STDS SSP2-PL	Pull-To-Lock Brake, SSP2, Left, 1/ea, EA
STDS SSP2-PR	Pull-To-Lock Brake, SSP2, Right, 1/ea, EA
STDS803	Oxygen Tank Holdr for W/C, 1/cs, CS

PARTS	Description
STDS8M462L	BrakeAsm. Detachable Arm Lt, SS2, Cruiser 1/ea, EA
STDS8M462R	BrakeAsm. Detachable Arm RT, SS2, Cruiser 1/ea, EA
STDS3J4601	Slide Tube w/bushing, SSP, 1/ea, EA
STDS002601	Bushing for Slide Tube, Sen. EC, 1/ea, EA
STDS1070	Seat Rail Guide, Removable Arm, 1/ea, EA
STDS3J4503	Arm Release Button, Slvr Sprt. 1/ea, EA
STDS8M4651	Fork Stem Cap, SS2, BS, Cruiser, 1/ea, EA
STDS004602	Seat Rail Guide, Fixed Arm, 1/ea, EA
STDS3J4625	Rear Axle Bolt Fix Arm Chair. SS2, 1/ea, EA
STDS8M4601	Fork Stem Bearing, SSP2, Cruiser, 1/ea, EA
STDS3J2431	Caster Axle Bolt, Silver Sport 1, 1/ea, EA
STDS3J2432	Caster with 8mm Bearings, 1/ea, EA
STDS3J2421	Hub Cap, Rear Wheel, Cruiser3, SSP, BS, 1/ea, EA
STDS001000	Axle Cap 8mm, 1 ea, EA
STDS3J2410R	Footplate & Heel Loop, Right, Cruiser, SSP, CS, EA
STDS3J2400	Handrim, Cruiser3, 1/ea, EA
STDS3J24SF	Footrest Set, Cruiser3, SSP, 1 pr/set, EA
STDS3J2424	Wheel 24in Blk. Handrl, Cruiser3, SSP, BS, 1/e, EA
LK3JELR	ELR Set, Black, 1 Pair eq EA, PR
STDS DSKVB	Universal Wheel Chair Vinyl Desk Arm Pad, 1/ea, EA