

Cruiser Classic Features

HCPCS:E1236

C
R
U
I
S
E
R
S

- **30° Fixed Tilt**
Promotes upper body positioning for individuals with limited upper body strength or trunk stability
- **85° – 95° Seat-to-Back Angle Adjustment**
Enhanced positioning for individuals with limited ability to bend at the waist
- **Self Tensioning Seating Surface**
Frame is uniquely designed to open wider with the weight of the occupant – this action keeps the fabric taut, and provides a flat/stable seating surface for optimal positioning
- **In-Depth Positioning Options**
Provide optimal positioning for increased therapeutic benefits – all day seating
- **Cruiser EI - Size 10**
The perfect Early Intervention (EI) wheelchair designed to address the positioning needs of children under 50 lbs. (suggested age range from 6 months to 4 years)
- **Lightweight & Compact Folding**
For easy storage and transport – fold and go!
- **Custom Modifications**
Achieve exact fit for any size or shape
- **Growth Capabilities**
Multiple frame adjustments extend the life of the chair for a growing child
- **Crash Tested Transit Models**
Adhere to national safety standards, and provide safe transport in bus or van



compact folded
CRUISER

Positioning options and accessories sold separately.

Cruiser Classic Specifications

Measurement	Chair Model	Seat Width*	Seat Depth**	Seat Back Height	Seat to Footplate*	Seat to Floor*	Seat-to-Back Angle	Seat Angle	Headrest Extension	Shoulder Strap Height	Weight Capacity Regular/Transit	Weight of Chair ^Δ
in.	CX 10	10	6 - 11	21	5 - 21	23	85° - 90° - 95°	30°	6	11 - 17	75 lbs / 66 lbs	19 lbs
cm	CX 10	25.5	15.2 - 27.9	53.3	13 - 53.3	58.5			15.3	27.9 - 43	34 kg / 30 kg	8.6 kg
in.	CX 12	12	8 - 13	20	5 - 19	22	85° - 90° - 95°	30°	8	12 - 18	75 lbs / 66 lbs	19 lbs
cm	CX 12	30.5	20 - 33	51	13 - 48	56			20	30.5 - 45.5	34 kg / 30 kg	8.6 kg
in.	CX 14	14	10 - 15	23	4 - 22	22	85° - 90° - 95°	30°	8	15 - 21	100 lbs / 100 lbs	21 lbs
cm	CX 14	35.5	25.4 - 38	59	10 - 56	56			20	38 - 53.3	45.5 kg / 45.5 kg	9.5 kg
in.	CX 16	16	12 - 17	25	4 - 22	23	85° - 90° - 95°	30°	8	14 - 22	170 lbs / 170 lbs	24.5 lbs
cm	CX 16	40.5	30.5 - 43.2	63.5	10 - 56	58.4			20	35.6 - 56	77 kg / 77 kg	11 kg
in.	CX 18	18	14 - 21	25	8 - 23	26	85° - 90° - 95°	30°	8	16 - 22	250 lbs / 170 lbs	30 lbs
cm	CX 18	45.5	35.6 - 53.3	63	20 - 58	66			20	41 - 56	114 kg / 77 kg	13.6 kg

in. - Inches, cm - Centimeters

* Plus or minus .5 inch (1.27 cm) due to fabric. ** 2 inch cut-out for minimum seat depth. Available as an option. Δ - Weight of chair is without front riggings.

Measurement	Chair Model	Overall Width	Overall Height	Overall Length	Folded Length	Folded Width	Folded Height
in.	CX 10	19	35	45	44.5	12	14
cm	CX 10	48	89	114.3	113	30.5	36
in.	CX 12	21	37	45	46	13	14
cm	CX 12	53	94	112	117	33	36
in.	CX 14	23	35	47	46	14	14
cm	CX 14	58	89	119.4	117	36	36
in.	CX 16	25	37	52	48	14	15
cm	CX 16	63.5	94	132	122	36	38
in.	CX 18	28.5	38	55	50	15	17
cm	CX 18	72.4	97	140	127	38	43

Use only Convoid options and parts on Convoid products. Convoid parts are not interchangeable with other manufacturer's products. Replace any worn parts immediately.

Note: Convoid maintains a policy of continual product improvement; therefore, we reserve the right to make changes without notice.

Cruiser Anatomic

The Cruiser Anatomic Back frame enhances posture and improves line of vision. Recommended by therapists, the Anatomic Back provides lumbar support, which stabilizes the neck and head to assist the development of righting reflexes. It comes with ABS stiffeners, which can be custom contoured.

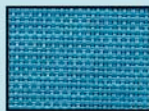


Upholstery Colors

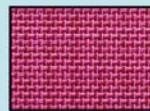
Removable, Washable Textile Fabric



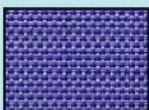
Ocean Blue



Teal



Raspberry



Purple



Navy Blue

Limited Lifetime Warranty

Frame and X-Braces.....Lifetime of original retail buyer
Fabric and webbing.....One year
Other components.....One year

This warranty does not cover normal wear and tear, or damage caused by accident or misuse.

