

ALTERNATING PRESSURE PUMP AND MATTRESS USER MANUAL

INTENDED USE

The Protekt Aire 3000 pump and mattress are intended to reduce the incidence of pressure ulcers while optimizing patient comfort. It also provides the following:

- ✚ Individual home care setting and long-term care
- ✚ Pain management as prescribed by a physician

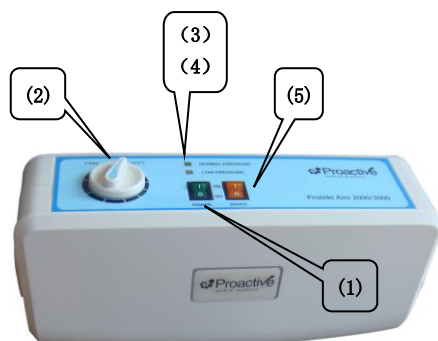
PRODUCT FUNCTIONS

Pump

The functions of the Protekt Aire 3000 pump are described below. Please refer to the figures of the Protekt Aire 3000 pump.

- ✚ Power Switch(1)
 - The switch is at the right side of the pumps.
 - Turn ON/OFF the power, the pump will start/stop operation.
- ✚ Pressure adjust knob(2)
 - Turn the soft/firm knob to set a comfortable pressure level.
- ✚ Normal Pressure Indicator(3)
 - A visible indicator (green) tells the pressure has reached a preset or user-defined level.
- ✚ Low Pressure Indicator(4)
 - A visible indicator (yellow or red) warns the pressure is below a preset or user-defined level.
- ✚ Static Control(5)
 - Press to set the air mattress in static mode.

1. Power switch
2. Pressure adjust knob
3. Normal Pressure Indicator
4. Low Pressure Indicator
5. Static Control



Mattress

The Protekt Aire 3000 pump comes with cell type mattress of different materials (Nylon PVC, Nylon TPU or PU), provided optionally with the pump.

Please refer to the specifications section for details.



270 Washington Street, Mount Vernon, New York 10553
 Tel: 845-205-6004 Fax: 845-205-6005
www.proactivemedical.com
 855-BE-PROACTIVE (855-237-7622)

OPERATING INSTRUCTIONS

- ✚ Place pump on horizontal surface or hang it by means of the hook.
- ✚ Open mattress on the bed. Secure it with end flaps or straps. Air tubes must be at foot end of bed.
- ✚ Connect air feed tubes to air outlet on the mattress and pump, ensuring that the tubes are not kinked or twisted. Allow space for bed rails to drop freely.
- ✚ Turn on the pump power. The indicator of the power switch will come on. The pump starts to pump air into the mattress.
- ✚ The Low Pressure indicator (yellow or red) will come on as inflation undergoes.
- ✚ When the pressure reaches the preset level within approximately 30 minutes, the Normal Pressure indicator will come on, and the Low Pressure indicator will turn off.
- ✚ Turn the Pressure adjust knob to set a comfortable pressure level from soft to firm.

ENVIRONMENT REQUIREMENTS

- ✚ Operation Temperature: 50°F~95°F (10°C~35°C)
- ✚ Storage Temperature: 5°F~122°F (-15°C~50°C)
- ✚ Operation Humidity: 20%~80% non-condensing
- ✚ Storage Humidity: 10%~90% non-condensing

CLEANING GUIDELINES

- ✚ Can be cleaned by disinfectant solution
- ✚ Do not immerse the pump in water
- ✚ Do not heat or steam in autoclave
- ✚ The mattress and cover are aerated until they are fully dry

TECHNICAL SPECIFICATIONS

Pump	Mattress
Item: Protekt Aire 3000	Item: Protekt Aire 3000
Power supply: 120V/60Hz, 1A	Size: 80" (L) x 35" (W) x 8" (H)
Air output: 8 liter/min.	Top cover: Nylon/PU with zipper
Pressure range: 30mmHg-60mmHg	Air cells: Nylon/PVC
Cycle time: 10 min.	Base: Nylon / PVC
Power consumption: 9W	20 air cells
With normal / low pressure light	CPR valve for emergency procedures
Size: 12" (L) x 6" (W) x 4" (H)	Pillow function
Weight: 3 Lbs	Quick connectors
	With low air loss

WARRANTY: 18 months for pump and mattress