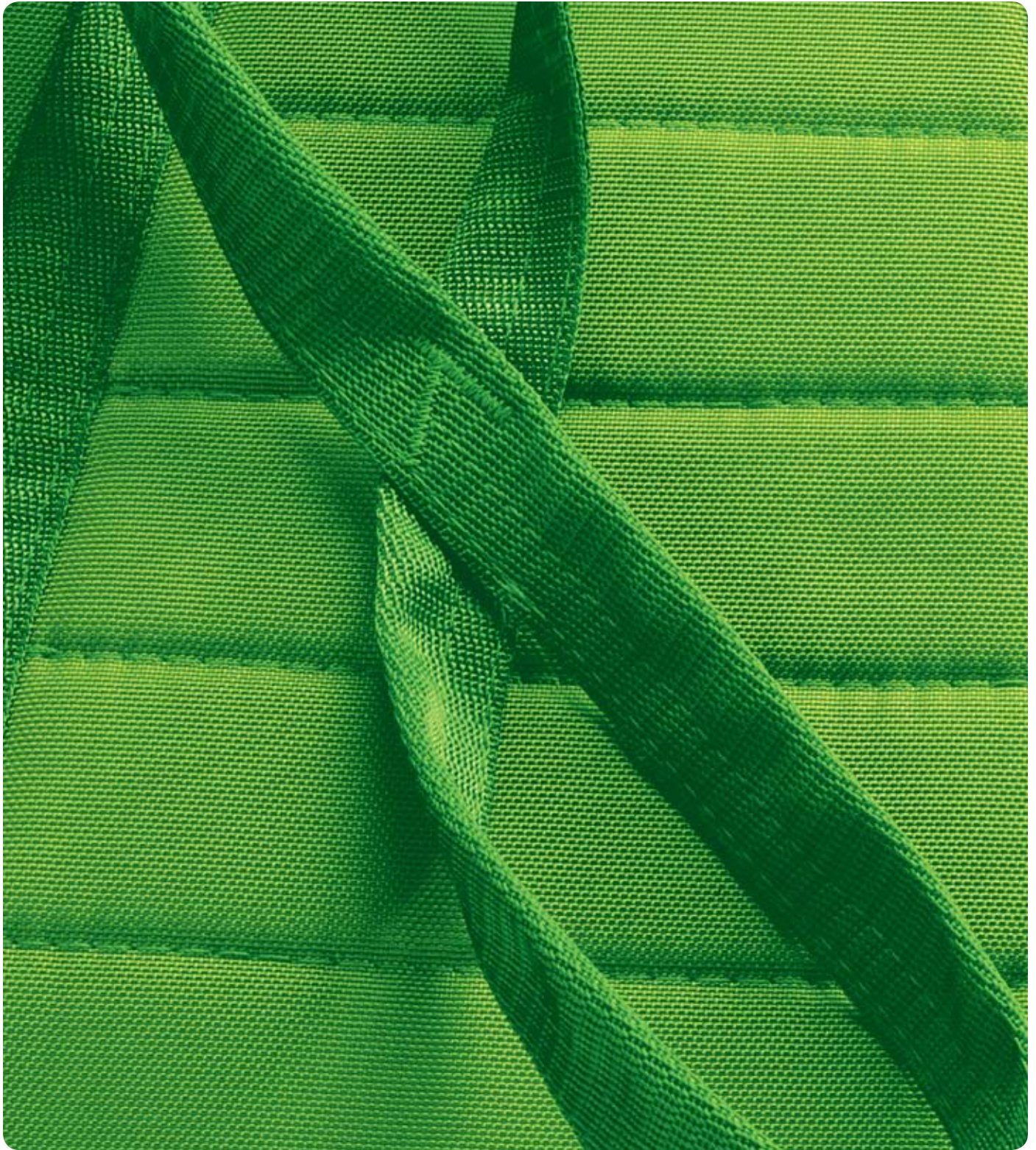




Lifting Accessories – Adult Slings



Liko lifting accessories

It started with a sling made entirely of textile fabric. At the time, this was revolutionary. Now Liko has the world's largest assortment of slings and lifting accessories. Together with our many varieties of slingbars in different widths and with different functions, Liko slings can be used to lift patients in all types of situations.

For more than 30 years, Liko has been developing functional, easy-to-use lifting accessories in close collaboration with caregivers and patients. With growing demands for lifting and as knowledge in this area increases, Liko's development process continues.

Many models

All models have unique features to suit different lifting needs. Some are referred to as basic models, since they cover a wider range of lifting needs for different people. Other models are more specialized for optimal lifting in narrower application areas.

Slings for Children

Children are not small adults. We have a large assortment of slings especially developed for children. Please refer to our website or our special brochure for children's accessories for more information.

Individual fitting and testing

To ensure maximum safety and comfort for patients and caregivers, each lifting accessory should be tested individually.

Sizes

The right choice of size is essential for safety, function and comfort.

Each model has individual sizes, as indicated in the table "Liko sling overview".

Instructions

A detailed instruction guide accompanies each sling. Everyone who uses the products must read and fully understand the instructions.

The instructions include recommendations concerning the most appropriate choice of slingbar for each sling.

Marking

A label on each sling describes the model, size and version. Laundering instructions are also given.

Inspection

Liko's slings have a very long, although limited working life. Use and laundering will cause fabric and seams to wear over time. All lifting accessories must be inspected regularly. Never use damaged lifting accessories!

Liko's slings are tested by accredited testing institutes and comply with all requirements for MDD Class I products and all requirements according to the harmonized EN ISO 10535 standard.

Bariatric patients



The Liko UltraSling™ Accessory, Mod. 06

With a 1,100 lbs capacity, UltraSling is designed for bariatric patients. UltraSling is used together with Liko's UltraTwin™ lifting system and is available in different sizes. With the UltraTwin lifting system, the patient can easily be positioned while in the sling during lift and transfer.

Mod. 06



Liko™ Comfort Sling Plus™ Accessory, Mod. 300, 310

The Comfort Sling Plus sling is an upgraded version of Comfort Sling (Mod. 30, 31) with improved comfort. The Comfort Sling Plus sling enables an upright seated posture and provides support for the entire back. The Comfort Sling Plus sling is applied and removed while the patient is lying down, and is then left in the chair after lifting. Model 310 features a hygiene opening.

Mod. 300/310

Basic models for safe and easy lifting



Liko™ Original Sling, Mod. 10, (11)

Original Sling has a semi-high back that allows the patient to keep one or both arms outside the sling.

Original Sling is appropriate for the active patient, and it is easy to work with.



Liko™ Universal Sling, Mod. 00, 02

Universal Sling is a basic model that is suitable for most patients. Universal Sling is ideal for elderly patients with limited mobility. It allows an upright sitting posture with support for the entire back.

Mod. 02 enables extra lifting height.



Liko™ Original Sling / Soft Original Sling Highback, Mod. 20, 26

Original Sling/Soft Original Sling Highback enables a semi-reclining seated posture with support for the head and is therefore ideal for patients with poor torso stability. Soft Original Sling Highback has been specially adapted for improved comfort with comfortable head support in the seated position. Original Sling/Soft Original Sling is very suitable for lifting to/ from the floor.



Liko™ Comfort Sling Plus™ Highback, Mod. 350, 360

Comfort Sling Plus Highback sling is an upgraded version of Comfort Sling (Mod. 30, 36) with improved comfort and fit. Comfort Sling Plus Highback enables a semi-reclining seated posture and provides support for the entire back. It features a soft head support. Comfort Sling Plus Highback is applied and removed while the patient is lying down, and is then left in the chair after lifting. Model 360 features a hygiene opening.



Universal Sling is perfect for lifting with leg supports overlapped under both legs.



Liko™ Silhouette Sling™, Mod. 22

Silhouette Sling enables a semi-reclining sitting posture with comfortable head support. It has been specially developed for transfers to close-fitting wheelchairs where the sling can be left after transfer to the chair is completed. Silhouette Sling is thin and pliable, without handles or bulky parts.

Lifting to the toilet

Models that enable dressing/undressing during the actual lifting operation.



Mod. 41



Mod. 45/46

Hygiene Sling, Mod. 40, 41, 45, 46

The Liko™ Hygiene Sling is an easy-to-use sling that facilitates dressing and undressing during lifting to and from the toilet. The Hygiene Sling is appropriate for patients with a certain degree of torso stability. Hygiene Sling Mod. 41 is equipped with a belt. Hygiene Sling Mod. 45 is equipped with a security belt and lifts around the upper body for extra security.

Mod. 46 is equipped with a security belt and an extra-high back support.



Mod. 50



Mod. 55

Liko™ HygieneVest™, Mod. 50, 55

HygieneVest is a unique sling that is specially designed to be safe and secure for lifting patients with poor muscle tone to and from the toilet.

HygieneVest sling enables an upright sitting posture with firm support around the upper body while leaving much of the lower body free for dressing and undressing.

HygieneVest High Back sling Mod. 55 is equipped with a head support.

Solo Disposable Slings



Mod. 25

Solo Disposable High Back Sling

To meet the need for slings for individual patients and as a way to avoid laundering, Liko has developed a series of disposable slings. Solo High Back is appropriate for most patients and can be used in all the most common lifting situations.

Amputee Slings



Mod. 70

Liko™ Amputee Sling, Mod. 70, 75

Liko Amputee sling is specially created to provide full security, even when lifting people with high double-sided amputations.

The extra strap guide keeps the leg supports together for safety reasons.

Amputee Mod. 75 is equipped with a head support.

Lifts for support and safety in the standing position



Liko™ MasterVest™, Mod. 60 and 64

MasterVest sling makes it easier to lift a person who can support their weight in a standing position. MasterVest sling is an excellent aid to standing, gait and balance training. The lower body is free for dressing and undressing during transfers to and from the toilet.

Liko MasterVest sling, Mod. 64, with front fasteners, can be applied and removed by the patient. Leg harnesses are available as an accessory.

Liko™ Lift Pants, Mod. 92

Liko Lift Pants facilitate safe, secure standing and gait training, giving patients the confidence to take new steps. Lift Pants enable freedom of movement, while relieving some of the burden of body weight. They lift safely, allowing the patient to move on his/her own without the risk of falling.

Sensitivity to pressure



For patients who are particularly sensitive to pressure, several padded models with synthetic sheepskin are available.

The padding also has a reinforcement insert that can be removed if necessary.

Net polyester – an airy alternative



Net polyester fabric is a suitable material for a sling that can be left on the patient after lifting. The material is airy, yet strong, and several versions of slings in polyester net are available. Slings in net polyester are ideal for bathing and showering.

Bath and shower



For lifts to the bath and shower, there are several models in durable, non-absorbent plastic-coated net fabric that feels comfortable next to the skin, even when wet. Slings in plastic-coated net are ideal for bathing and showering.

Liko™ sling overview, adult sizes

Part No.		Universal Sling	Universal High Level Sling	Ultra Sling	Original Sling	Original High Back Sling	Solo Disposable High Back Sling	Soft Original High Back Sling	See Original High Back Sling	Comfort Sling Plus	See Original Sling for reference	Comfort Sling Plus	See Original Sling for reference	Hygiene Sling with belt	Hygiene Sling	Hygiene Sling with Safety belt	Hygiene Safety Sling	Hygiene Vest High Back	Hygiene Vest	Master Vest	Vest for Standing shell	Master Vest, front closure	Amputee Sling	Amputee Sling High Back	Ultra Lift Pants	Ultra Lift Pants			
35XX---	Model	00	02	06	10	11	20	21	22	25	26	300	310	350	360	40	41	45	46	50	55	60	64	67	70	75	92	920	
SIZES	35---4	Small	•													•	•	•	•	•	•	•	•	•	•	•	•	•	
	35---5	Medium Slim	•				•		•		•	•																	
	35---5	Medium	•	•		•		•		•	•	•	•	•	•	•	•	•	•	•	•	•	•	•	•	•	•	•	
	35---6	Large	•	•		•		•		•	•	•	•	•	•	•	•	•	•	•	•	•	•	•	•	•	•	•	
	35---7	XLarge	•			•		•		•	•	•	•	•	•		•	•		•	•	•	•	•	•	•	•	•	
	35---8	XXLarge						•				•								•	○	•	•					•	
	35---9	XXXLarge																		•								•	
	35---14	Short			•																								
	35---15	Regular			•																								
35---16	Long			•																									
With reinforced leg supports	35--11-	Polyester	•	•	•	•	•	•	•			•						○		•	•	•	•	•	•	•	•	•	
	35--21-	Cotton	•			○	○	○	○				•		•											○	○		
	35--31-	Net polyester	•	○	•	•	•	•	•	○		○	•	•	•	•	○									•	•		
	35--41-	Plastic-coated net	○	○		○		•	○				•	•		•	○						•	•		○	○		
	35--12-	Padded, Polyester	•	○		•	•	•	•								○	○	○	○	○	○	○	○	○	○	○	○	
	35--13-	Polyester, Corduroy				○											•	•	•	•	○								
	35--22-	Padded, Cotton	○			○		○	○								○												
Without reinforced leg supports	35--32-	Padded, Net polyester	○	○		○	○	○	○	○																		•	•
	35--10-	Polyester	○			•	•	•	•																				
	35--20-	Cotton	○			•		•								○													
	35--30-	Net polyester	•	○		•	•	•	•	•																	○		
	35--40-	Plastic-coated net	•	○		•	•	•	•	○							○										○	○	
	35--60-	Net polyester, thin	○			○		○	○	•																			
For toilet lifts		•	•	•	•	•	•	•	•	•	•	•	•	•	•	•	•	•	•	•	•	•	•	•	•	•	•	•	
Built-in head support							•	•	•	•	•			•	•						•				•		•		
Disposable sling										•																			

- = Standard
- = Made-to-order

Lifting accessories



Repositioning Sheet

Stat RepoSheef® accessory is an excellent aid when a patient has to be moved higher up or turned in bed. The RepoSheet accessory is placed under the patient and can be used in combination with, or instead of, an ordinary bed sheet.



Sling Cross-bar

Sling Cross-bar enables a slightly more reclined sitting posture than a two-point slingbar and is ideal for use with many slings in Liko's product range. Two models are available.



Extension loops

Liko extension loops are intended for quick and easy adaptation of lifting accessories. There are two standard lengths: for 4.7 or 8.7 inches (12 cm or 22 cm). extensions of the normal strap loop lengths. Available in green and grey.



Padded Cases

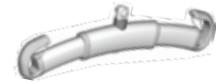
Padded Cases are available as an extra accessory for all our slings. They are fitted with synthetic sheepskin on one side and the sling's material on the other. Indicate which sling (model, size and material) the Padded Case is intended for when ordering.



LikoScale™ Device

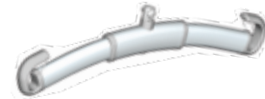
A digital scale that can be used in combination with all of Liko's lifts. Connected above the slingbar, LikoScale device is easy to use and easy to read. There are LikoScale devices for weighing patients up to 770 lbs (350 kg).

Universal Slingbars



Universal Slingbar 350

This model is especially popular where lifting children is concerned.



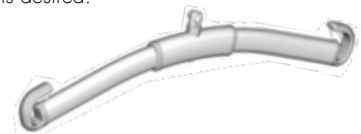
Universal Slingbar 450

An all-round model that is ideal in most cases.



Universal Twinbar 670

A slingbar for larger patients or in situations where greater width across the shoulders is desired.



Universal Slingbar 600

This slingbar is mainly intended for use with Comfort Slings or when a sling is applied with separate leg supports "overlapped" under the legs.



Universal Side bars

Used to achieve a four-point suspension to enable a semi-sitting posture. Normally used in combination with Universal Slingbar 450 or 600.

See more accessories at www.liko.com



www.liko.com

Manufactured by:	National Distributor in USA and Canada:
Liko AB	Liko
Nedre vägen 100	122 Grove Street
975 92 Luleå	Franklin, MA 02038
Sweden	Tel: 508-553-3993, 888-545-6671
info@liko.se	Fax: 508-528-6642
	info@liko.com

