

AccuMax Quantum™ VPC Mattress

Clinically proven to help prevent and treat pressure ulcers



Enhancing outcomes for
patients and their caregivers:

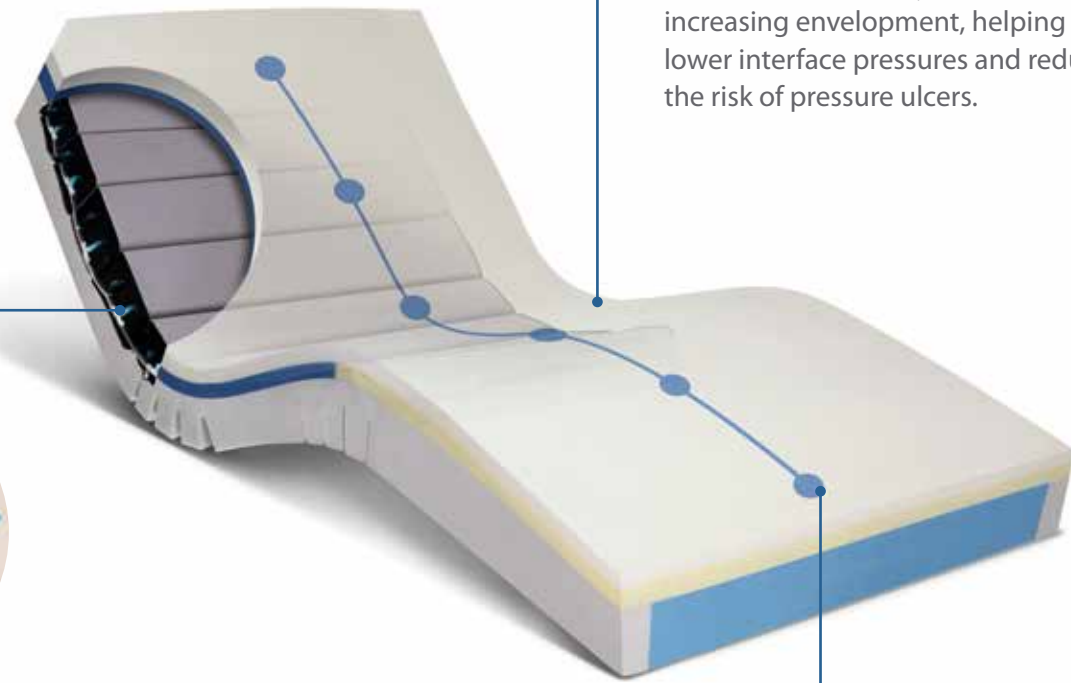
Hill-Rom

AccuMax Quantum™ VPC surface delivers clinically effective performance.



Lower interface pressures

Viscoelastic foam contours to patient's unique body shape, increasing envelopment, helping to lower interface pressures and reduce the risk of pressure ulcers.

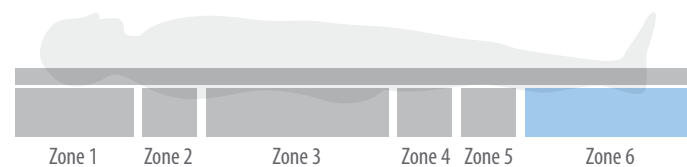


Customized therapy

Controlled Released™ technology enables automatic response to patient movement, creating custom pressure relief. As pressure changes, intake/output valves release displaced air to achieve a therapeutic low pressure balance.

Targeted pressure redistribution

Six targeted pressure redistribution zones provide protection for most vulnerable areas, including the head, sacrum and heel.

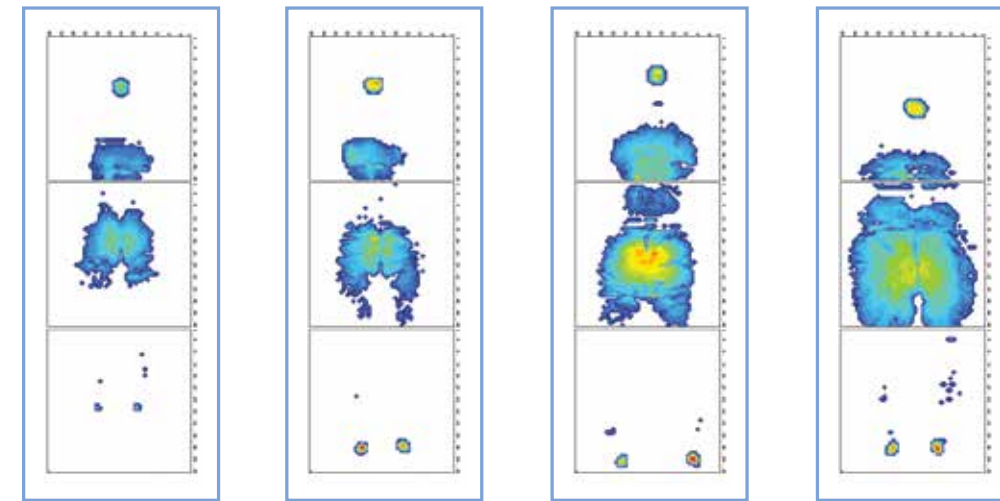


PROVEN OUTCOMES



AccuMax Quantum™ surfaces **helped decrease facility-acquired pressure ulcers** by 61.5% over an eight month time period in a study at St. Joseph Medical Center, Joliet, IL.¹

AccuMax Quantum™ VPC technology helps to provide low interface pressure readings for a wide range of patient weights

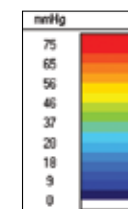


Head-of-Bed 30°
130 lb female

Head-of-Bed 30°
154 lb female

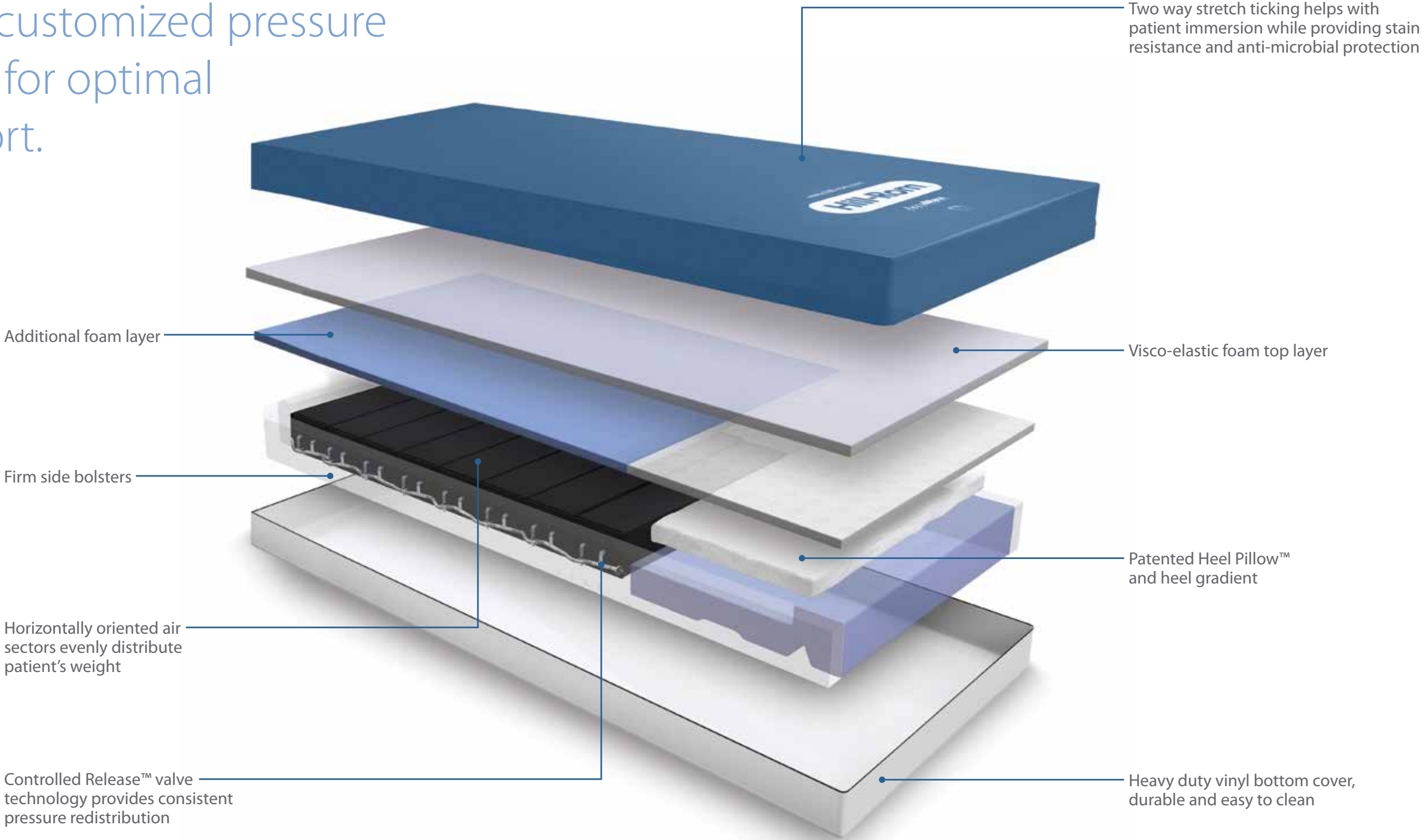
Head-of-Bed 30°
240 lb male

Head-of-Bed 30°
288 lb female



Representative sample for supine patient at weight indicated. Pressure results will vary depending on patient weight and position. Always use in conjunction with facility protocols for patient repositioning and pressure ulcer prevention.

AccuMax Quantum™ VPC combines multiple technologies to provide targeted and customized pressure redistribution for optimal patient support.



AccuMax Quantum™ VPC surfaces are designed to fit a variety of frames.



VersaCare® bed frame:

- Unique pan design, precision die-cut construction of heel section creates a wider pressure relief area and allows mattress to extend or retract with bed frame
- Seven horizontally oriented air sectors and four anatomically inspired pressure relief zones



CareAssist® ES bed frame:

- Bevelled side edges and modified head and foot ends to accommodate the CareAssist® ES bed frame
- Nine horizontally oriented air sectors and six anatomically inspired pressure relief zones



TotalCare® bed frame:

- Articulates to FullChair® position
- Unique, contour-shaped design in the foot section allows mattress to extend or retract with bed frame
- Seven horizontally oriented air sectors and four anatomically inspired pressure relief zones

Hill-Rom is a leading global medical technology company with more than 7,000 employees in over 100 countries. We partner with health care providers by focusing on patient care solutions that improve clinical and economic outcomes in five core areas: **Advancing Mobility, Wound Care and Prevention, Clinical Workflow, Surgical Safety and Efficiency, and Respiratory Health.**

Hill-Rom's people, programs, and product brands work towards one mission: **Every day, around the world, we enhance outcomes for our patients and their caregivers.**

1. Strilko, Becky RN, CWOCN, et al. May/June 2005. Effects of a non-powered dynamic surface on reducing facility-acquired pressure ulcers. *JWOCN*, 32, S18.

Hill-Rom reserves the right to make changes without notice in design, specifications and models. The only warranty Hill-Rom makes is the express written warranty extended on the sale or rental of its products.

©2014 Hill-Rom Services, Inc. ALL RIGHTS RESERVED.
154872 rev 5 08-SEP-2014 ENG – US

For further information about this product or a service, please contact your local Hill-Rom representative or visit our webpage:

USA 800-445-3730
Canada 800-267-2337

www.hill-rom.com

Enhancing outcomes for
patients and their caregivers:

Hill-Rom