

At'm Chair



Parts Catalog Usage Guide

The information contained in this document is subject to change without notice. This catalog contains service parts for Form No. 04-051. If you have any questions regarding this catalog, please contact one of our Customer Service Representatives.

For Customer Service Support Call:

1-800-333-6900

For Faxed In Orders Call:

1-800-678-4682 or

1-440-366-0709

For Technical Service Call:

1-800-832-4707

Literature Can Be Found at:

www.invacare.com or

1-800-828-6272

SYMBOL DEFINITION

Throughout this catalog you will notice letters to draw your attention to specific footnotes which are located at the bottom of the page or below specified charts.

Examples:

A,B,C etc. = Special Comments

NOTE: = General information pertaining to that specific page

NLA = No Longer Available

HARDWARE MEASUREMENTS

The measurements for the hardware will be listed as follows:

Screws, Bolts Diameter X Thread Count/Pitch X Length

Washers Inside Diameter X Outside Diameter X Thickness

Spacers Inside Diameter X Outside Diameter X Length

For your convenience, we have supplied an area for you to list your Invacare Representatives.

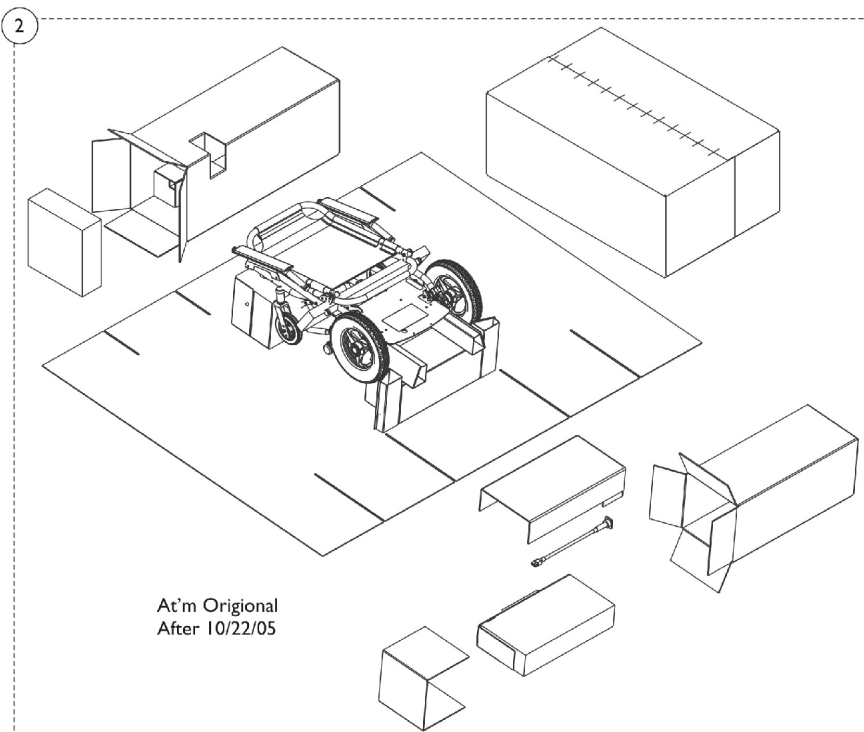
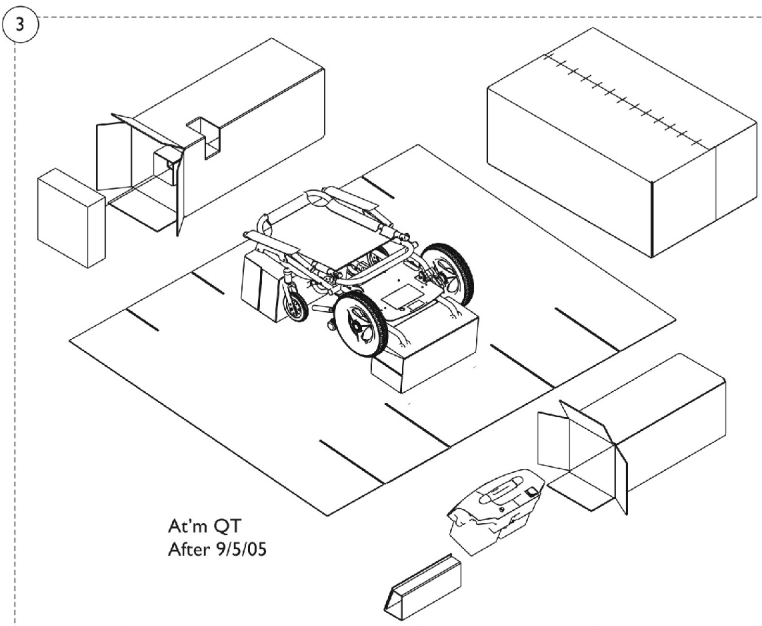
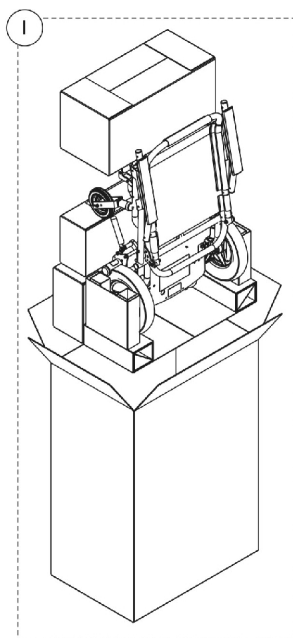
Name	Phone Numbers

©2009 Invacare Corporation, Elyria, Ohio. Invacare, Yes, you can. and the Medallion Design are registered trademarks of the Invacare Corporation.

TABLE of CONTENTS

Description	Page Number
Anti-Tips	33
Arm Assemblies	7
Back Frame	10
Battery, Controller, Cables, & Charger	30
Casters, Front & Rear Wheels	18
Footplate	20
Frame Assembly - At'm QT only	14
Joystick Assembly	16
Motors	28
Packaging & Literature	3
Seat Locks	13
Shrouds and Battery Bracket - For At'm original	24
Shrouds and Battery Bracket - For At'm QT	26
Swing-Away Footrest	22
Upholstery	5

Packaging & Literature



Packaging & Literature

Item Number	Note	Part Number	Description	Quantity Per	
				Package	Assembly
1		1126467	Kit, Packaging (At'm Original before 7/21/05)	1	1
			Carton, Inner	1	1
			Insert, Carton	1	1
			Insert, Carton	1	1
			Insert, Carton	1	1
			Carton, Shipper	1	1
			Insert, Carton	1	2
			Insert, Side	1	2
			Bag, Poly (72" L x 35" W x 19" D)	1	1
			Tube, Paper	1	1
			Tie Wrap (11-1/2" L)	1	2
2		1136821	Kit, Packaging (At'm Original after 7/22/05)	1	1
			Carton, Shipper	1	1
			Insert, Battery Carton	1	1
			Insert, Carton	1	1
			Insert, Battery	1	1
			Insert, Filler, Carton	1	1
			Bag, Poly (72" L x 35" W x 19" D)	1	1
			Tube, Paper	1	1
			Tie Wrap (11-1/2" L)	1	2
			Insert, Battery	1	4
			Insert, Carton	1	1
3	A	1136820	Kit, Packaging (At'm QT After 9/5/05)	1	1
			Carton, Shipper	1	1
			Insert, Battery Carton	1	1
			Insert, Filler, Carton	1	1
			Insert, Battery	1	1
			Bag, Poly (72" L x 35" W x 19" D)	1	1
			Tube, Paper	1	1
		1126549	Tie Wrap (11-1/2" L)	1	2
			Kit, Literature	1	1
			Bag, Poly Zip-Lip (13" L x 9" W)	1	1
			Instruction Manual, MK5 NX/NX-LP	1	1
			Owner's Manual - At'm	1	1

NOTE: A - Not Shown

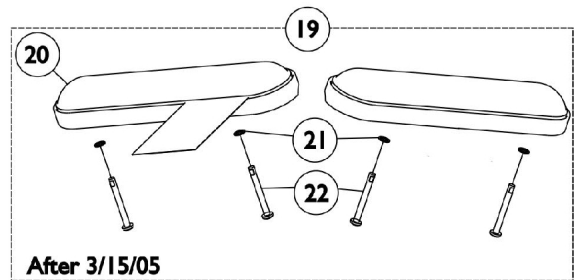
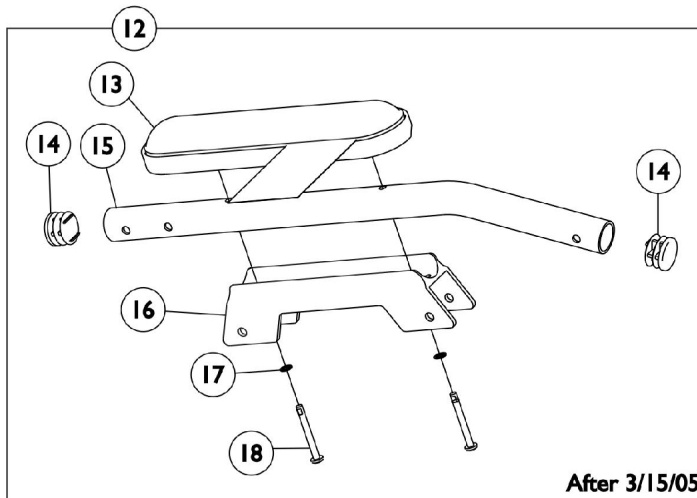
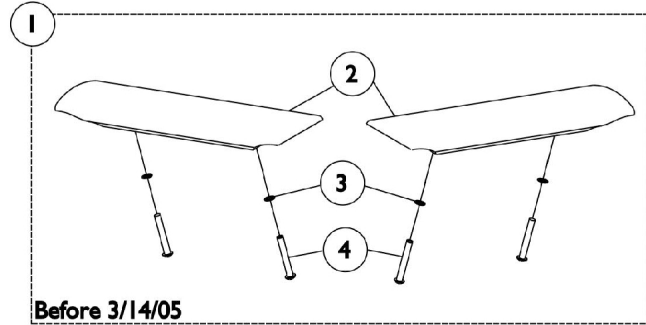
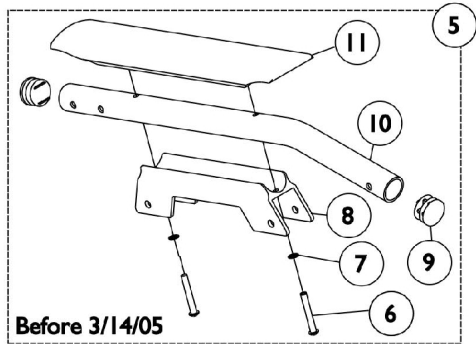
Upholstery



Upholstery

Item Number	Note	Part Number	Description	Quantity Per	
				Package	Assembly
1	C	1126528	Upholstery, Seat and Back Sling Assembly (16")	1	1
1		1126529	Upholstery, Seat and Back Sling Assembly (18")	1	1
2	A	1131178	Kit, Upholstery Clothing Guards	1	1
3			Guard, Clothing, Upholstery	1	2
4		1126531	Upholstery, Under Chair Basket	1	1
5	B,C	1126530	Upholstery, Battery Bag (At'm original)	1	1
	D,E	1004310	Strap, Positioning, Seat/Chest w/ Auto Style Push Button Buckle (Eyelet to Eyelet Length 48")	1	1
NOTE: A - Includes: 2ea. of Item #3 B - Wiring Harness and Batteries are NOT included. For Wiring Harness part number, see section "Controller, Cables, & Charger". C - Used on the Atm Original only. D - Not Shown E - Used for the Atm QT only					

Arm Assemblies



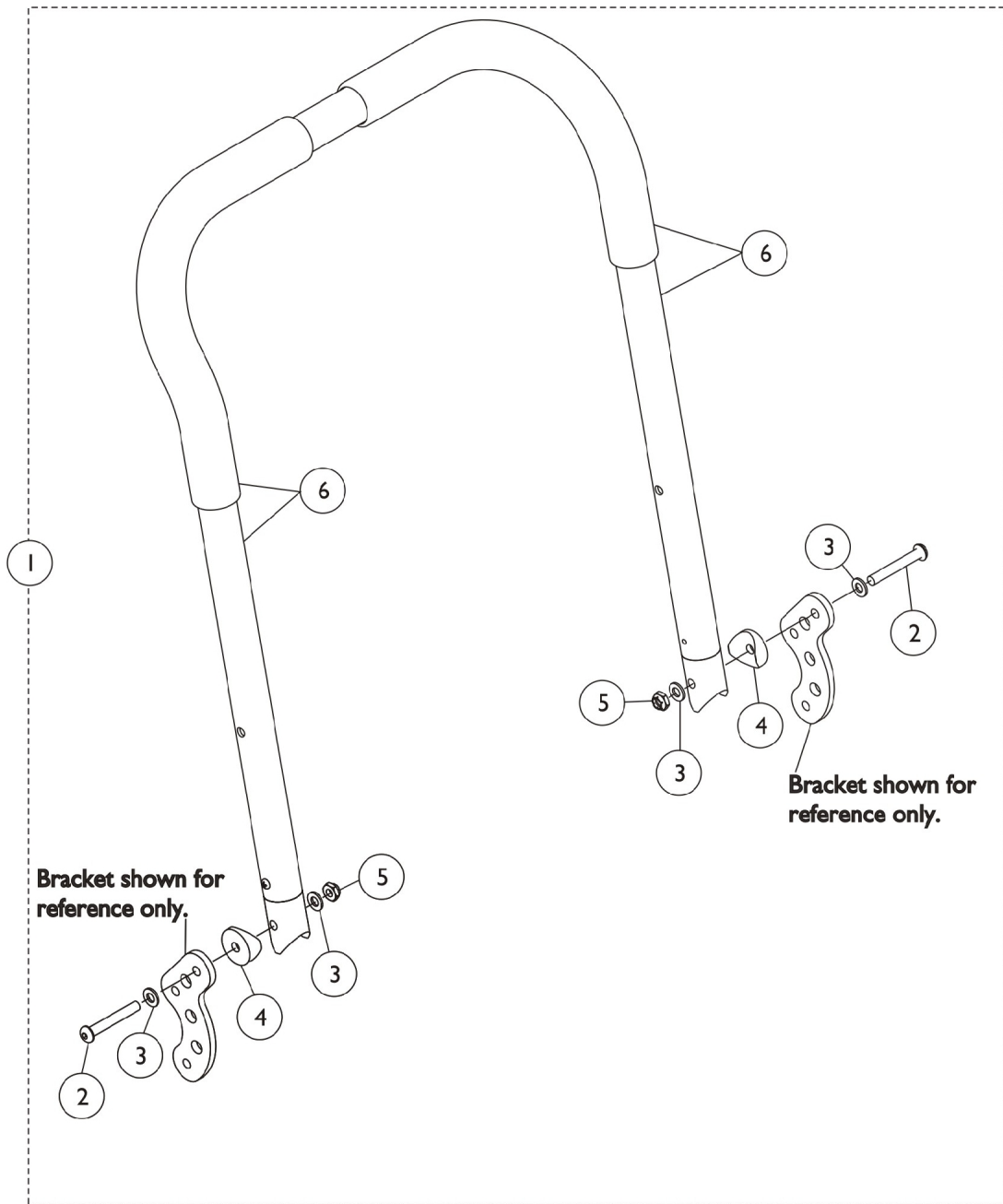
Arm Assemblies

Item Number	Note	Part Number	Description	Quantity Per	
				Package	Assembly
1	B,D	1131179	Kit, Arm Pads with Hardware	1	1
2			Pad, Arm Rest	1	2
3			Washer, Lock Tooth (3/16 x 3/8 x 1/32")	1	4
4			Screw, Phillips Pan Head (#10-24 x 1-1/2")	1	4
5	C,D	1126524	Kit, Arm Rest with Arm Tube (Red)	1	1
6			Screw, Phillips Pan Head (#10-24 x 1-1/2")	1	2
7			Washer, Lock Tooth (3/16 x 3/8 x 1/32")	1	2
8			Bracket, Armrest, Black	1	1
9			Plug Button, Black (1")	1	2
10			Tube, Arm, Color	1	1
11			Pad, Arm Rest	1	1
5	C,D	1141831	Kit, Arm Rest with Arm Tube (Blue)	1	1
6			Screw, Phillips Pan Head (#10-24 x 1-1/2")	1	2
7			Washer, Lock Tooth (3/16 x 3/8 x 1/32")	1	2
8			Bracket, Armrest, Black	1	1
9			Plug Button, Black (1")	1	2
10			Tube, Arm, Color	1	1
11			Pad, Arm Rest	1	1
12	A,F,I	1128799	Kit, Arm Rest with Arm Tube (Red)	1	1
14			Plug Button, Black (1")	1	2
15			Tube, Arm, Desk, Color	1	1
16			Bracket, Armrest, Black	1	1
17			Washer, Lock Tooth (3/16 x 3/8 x 1/32")	1	2
18			Screw, Phillips Pan Head w/ Patch (#10-32 x 1-3/4")	1	2
12	A,F,I	1141830	Kit, Arm Rest with Arm Tube (Blue)	1	1
14			Plug Button, Black (1")	1	2
15			Tube, Arm, Desk, Color	1	1
16			Bracket, Armrest, Black	1	1
17			Washer, Lock Tooth (3/16 x 3/8 x 1/32")	1	2
18			Screw, Phillips Pan Head w/ Patch (#10-32 x 1-3/4")	1	2
12	A,F,H	1143878	Kit, Arm Rest With Arm Tube (Red)	1	1
14			Plug Button, Black (1")	1	2
15			Tube, Arm, Color	1	1
16			Bracket, Armrest, Black	1	1
17			Washer, Lock Tooth (3/16 x 3/8 x 1/32")	1	2
18			Screw, Phillips Pan Head w/ Patch (#10-32 x 1-3/4")	1	2
12	A,F,H	1141829	Kit, Arm Rest with Arm Tube (Blue)	1	1
14			Plug Button, Black (1")	1	2
15			Tube, Arm, Color	1	1
16			Bracket, Armrest, Black	1	1
17			Washer, Lock Tooth (3/16 x 3/8 x 1/32")	1	2
18			Screw, Phillips Pan Head w/ Patch (#10-32 x 1-3/4")	1	2
19	A,E,G	8881132807	Kit, Arm Pad with Hardware	2	1
20			Pad, Arm, Desk Length	1	1

Arm Assemblies

Item Number	Note	Part Number	Description	Quantity Per	
				Package	Assembly
20			Pad, Arm, Desk Length	1	1
21			Washer, Lock Tooth (3/16 x 3/8 x 1/32")	1	4
22			Screw, Phillips Pan Head w/ Patch (#10-32 x 1-3/4")	1	4
NOTE: A - Specify Black for the Arm Pad color. B - Includes: Items 2-4 C - Includes: Items 6-11 D - Before 3/14/05 E - After 3/15/05 F - Includes: Items 13-18 G - Includes: Items 20-22 H - After 7/22/05 I - After 3/15/05 and Before 7/22/05					

Back Frame



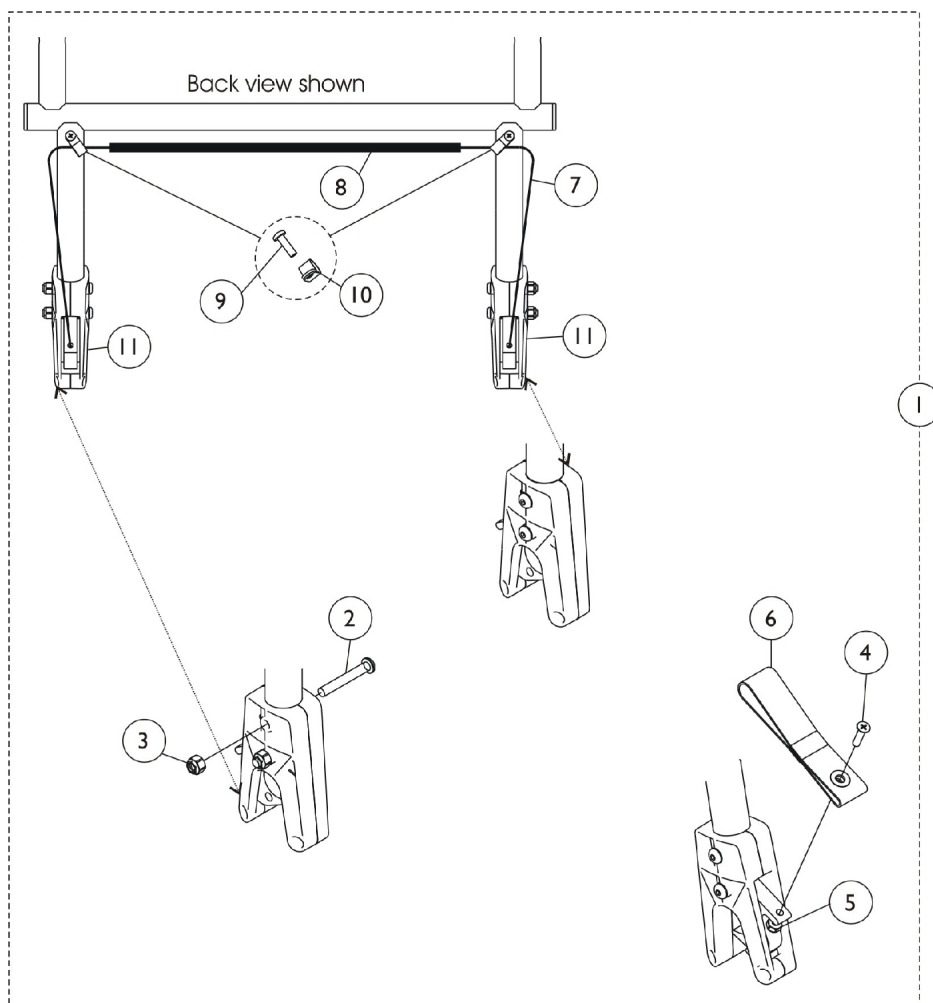
Back Frame

Item Number	Note	Part Number	Description	Quantity Per	
				Package	Assembly
1	A,B	1131182	Kit, Back Frame with Grips (16" Wide) - Red	1	1
2			Screw, Socket Button Head (1/4-20 x 1-3/4")	1	2
3			Washer (1/4 x 1/2 x 1/16")	1	4
4			Spacer, Coved (1/4 x 1 x 9/16")	1	2
5			Locknut (1/4-20)	1	2
6			Back Cane Assembly, Color (16" W)	1	1
1	A,B	1131183	Kit, Back Frame with Grips (16" Wide) - Blue	1	1
2			Screw, Socket Button Head (1/4-20 x 1-3/4")	1	2
3			Washer (1/4 x 1/2 x 1/16")	1	4
4			Spacer, Coved (1/4 x 1 x 9/16")	1	2
5			Locknut (1/4-20)	1	2
6			Back Cane Assembly, Color (16" W)	1	1
1	A,B	1131184	Kit, Back Frame with Grips (18" Wide) - Red	1	1
2			Screw, Socket Button Head (1/4-20 x 1-3/4")	1	2
3			Washer (1/4 x 1/2 x 1/16")	1	2
4			Spacer, Coved (1/4 x 1 x 9/16")	1	2
5			Locknut (1/4-20)	1	2
6			Back Cane Assembly with Grips (18")	1	1
1	A,B	1131185	Kit, Back Frame with Grips (18" Wide) - Blue	1	1
2			Screw, Socket Button Head (1/4-20 x 1-3/4")	1	2
3			Washer (1/4 x 1/2 x 1/16")	1	2
4			Spacer, Coved (1/4 x 1 x 9/16")	1	2
5			Locknut (1/4-20)	1	2
6			Back Cane Assembly with Grips (18")	1	1
1	A,C	1135816	Kit, Back Frame with Grips - Fold Flatter (16" Wide) - Red	1	1
2			Screw, Socket Button Head (1/4-20 x 1-3/4")	1	2
3			Washer (1/4 x 1/2 x 1/16")	1	4
4			Spacer, Coved (1/4 x 1 x 9/16")	1	2
5			Locknut (1/4-20)	1	2
6			Back Cane Assembly, Fold Flatter, Color (16")	1	1
1	A,C	1135817	Kit, Back Frame with Grips - Fold Flatter (16" Wide) - Blue	1	1
2			Screw, Socket Button Head (1/4-20 x 1-3/4")	1	2
3			Washer (1/4 x 1/2 x 1/16")	1	4
4			Spacer, Coved (1/4 x 1 x 9/16")	1	2
5			Locknut (1/4-20)	1	2
6			Back Cane Assembly, Fold Flatter, Color (16")	1	1
1	A,C	1135818	Kit, Back Frame with Grips - Fold Flatter (18" Wide) - Red	1	1
2			Screw, Socket Button Head (1/4-20 x 1-3/4")	1	2
3			Washer (1/4 x 1/2 x 1/16")	1	2
4			Spacer, Coved (1/4 x 1 x 9/16")	1	2
5			Locknut (1/4-20)	1	2
6			Back Cane Assembly, Fold Flatter, Color (18" H)	1	1

Back Frame

Item Number	Note	Part Number	Description	Quantity Per	
				Package	Assembly
1	A,C	1135819	Kit, Back Frame with Grips - Fold Flatter (18" Wide) - Blue	1	1
2			Screw, Socket Button Head (1/4-20 x 1-3/4")	1	2
3			Washer (1/4 x 1/2 x 1/16")	1	2
4			Spacer, Coved (1/4 x 1 x 9/16")	1	2
5			Locknut (1/4-20)	1	2
6			Back Cane Assembly, Fold Flatter, Color (18" H)	1	1
NOTE: A - Includes: Items 2-6 B - Before 7/25/05 C - After 7/22/05					

Seat Locks



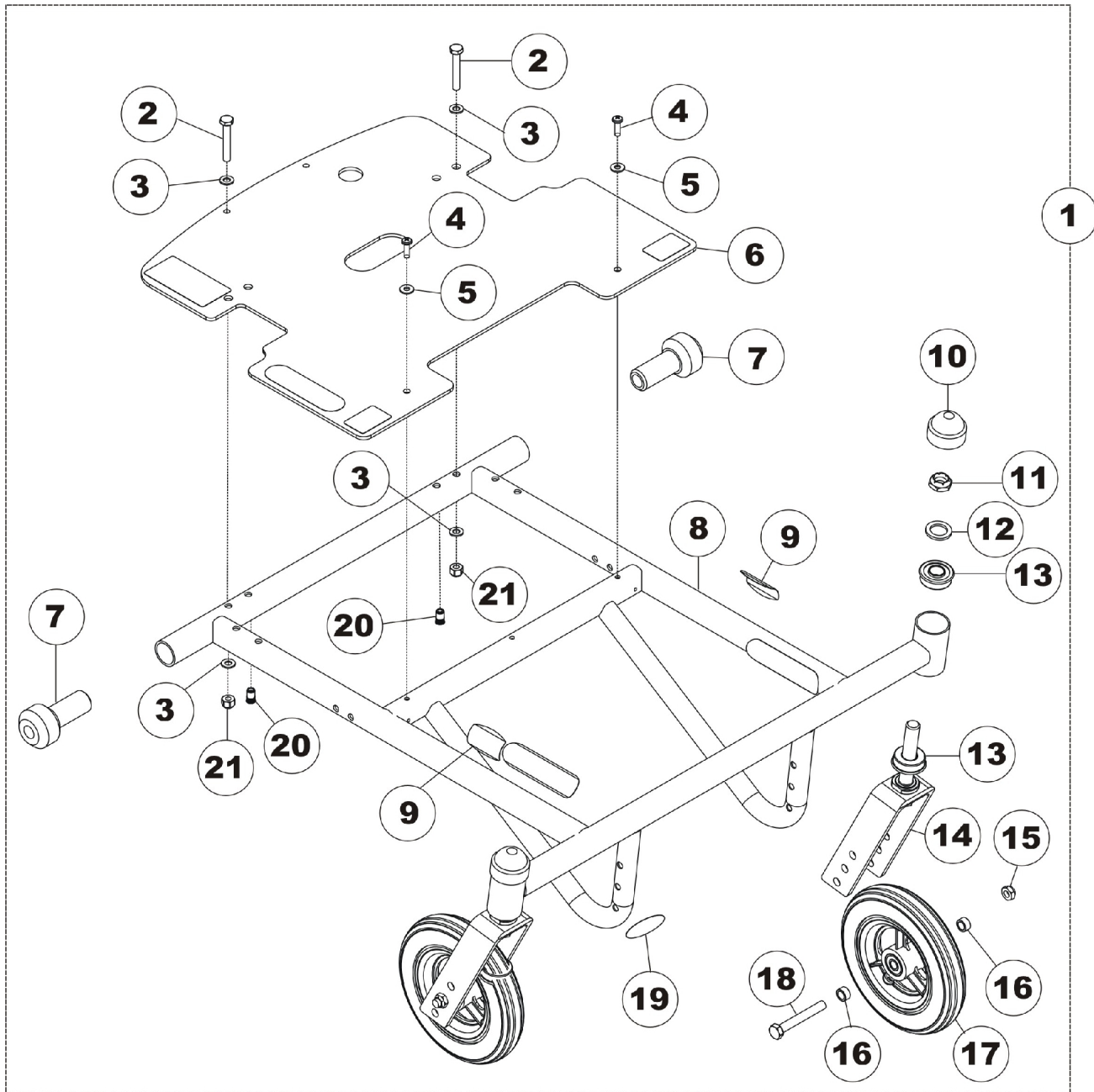
Item Number	Note	Part Number	Description	Quantity Per	
				Package	Assembly
1	A	1131186	Kit, Seat Locking	1	1
2			Screw, Socket Button Head (1/4-20 x 1-3/4")	1	3
3			Locknut (1/4-20)	1	3
4			Screw, Hex Flat Head (#10-32 x 1-3/4")	1	1
5			Locknut (#10-32)	1	1
6			Strap, Pull	1	1
7			Cord, Nylon	1	1
8			Cover, Cord, Clear	1	1
9			Screw, Phillips Pan Head (#10-16 x 5/8")	1	2
10			Clamp, Cable	1	2
11			Latch Assembly, Black	1	3

NOTE: A - Includes: Items 2-11

Frame Assembly

For the At'm QT only
After 9/5/05

Caster and Fork parts are available on the "Front Casters & Rear Wheels" page.



Frame Assembly

For the At'm QT only

After 9/5/05

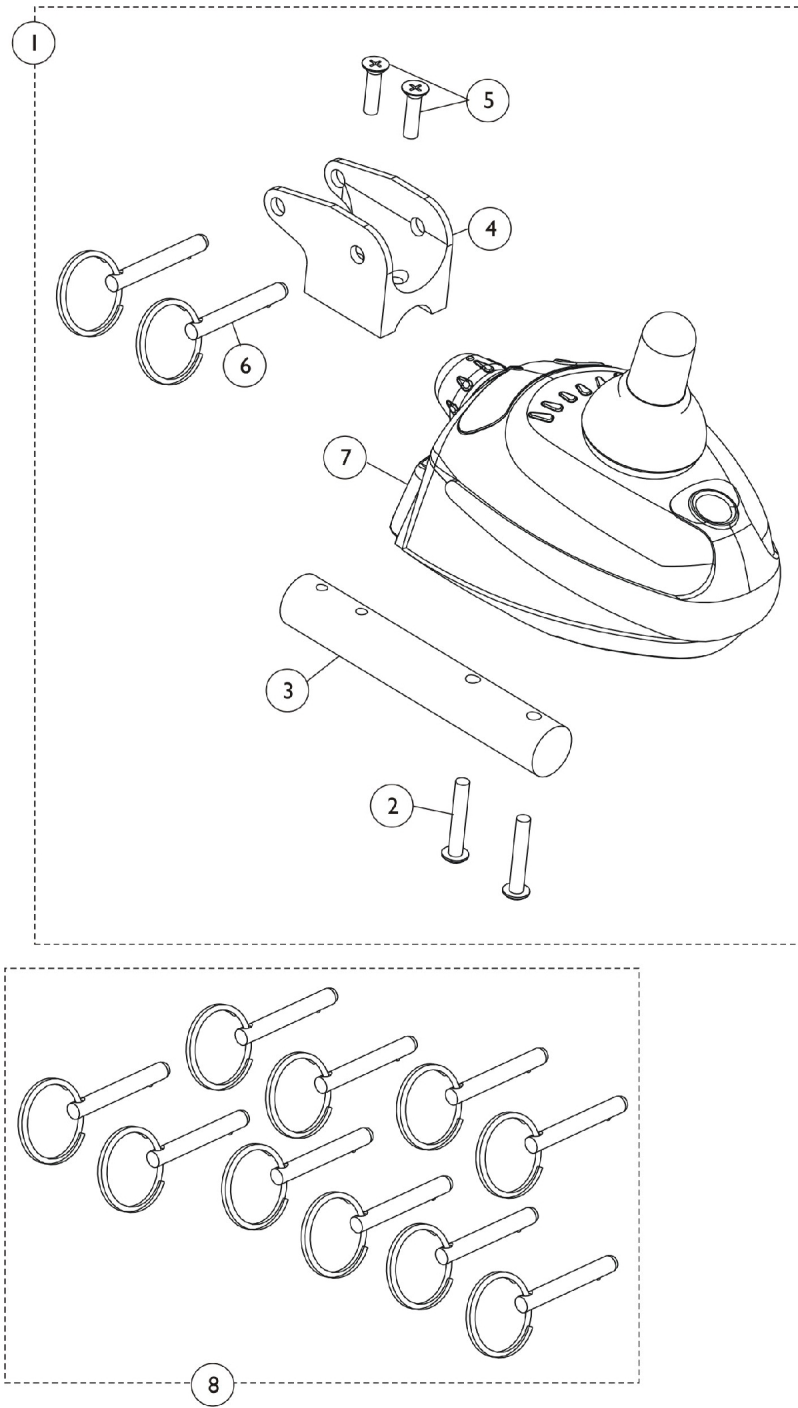
Caster and Fork parts are available on the "Front Casters & Rear Wheels" page.

Item Number	Note	Part Number	Description	Quantity Per	
				Package	Assembly
1	A	1132647	Kit, Frame Assembly - At'm QT	1	1
2			Screw, Hex Head (1/4-20 x 1-5/8")	1	2
3			Washer (1/4 x 1/2 x 1/16")	1	4
4			Screw, Phillips Pan Head (#10-16 x 5/8")	1	2
5			Washer, Plain (3/16 x 1/2 x 1/16")	1	2
6			Bottom Panel Assembly	1	1
7			Axle, Quick Release	1	2
8			Frame, Wet Black	1	1
9			Decal - At'm	1	2
10			Cap, Head Tube, Black	1	2
11			Locknut (1/2-20)	1	2
12			Washer, Nylon (5/8 x 1 x 3/32")	1	2
13			Bearing, Flange (1/2")	1	4
14			Fork and Stem Assembly, Black (6 x 1" Urethane Caster)	1	2
15			Locknut (5/16-24)	1	2
16			Spacer (5/16 x 7/16 x 1/4")	1	4
17			Wheel Assembly, 3 Spoke Urethane w/ Bearings, Dark Grey (6" x 1")	1	2
18			Screw, Hex Head (5/16-24 x 2-1/4")	1	2
19			Decal	1	1
20			Insert, Threaded (#10-32)	1	2
21			Locknut (1/4-20)	1	2
			Plate, Name, Patent Numbers	1	1

NOTE: A - Includes: Items 2-21 and Name Plate, Patent Numbers

Joystick Assembly

"EZ" style and "At'm" style are NOT compatible. If replacing "EZ" chair joystick or controller (Noted by a label on the back that has DK-PMA01 Shark) you will need to replace both the controller (has Invacare logo with DK-PMA02/03 MK5) and the joystick (has Invacare logo with DK-REMI01 MK5 CSPJ on bottom) together.

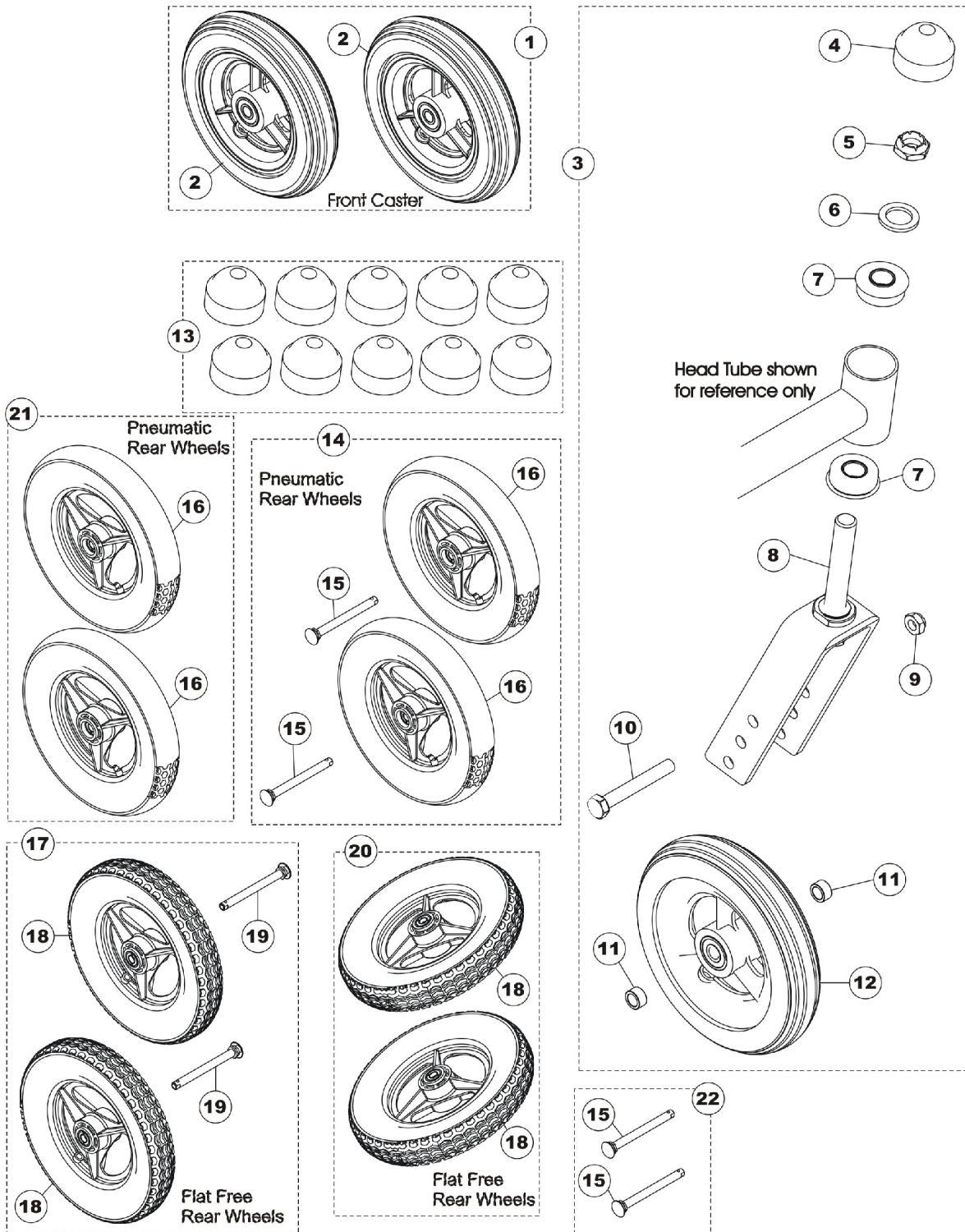


Joystick Assembly

"EZ" style and "At'm" style are NOT compatible. If replacing "EZ" chair joystick or controller (Noted by a label on the back that has DK-PMA01 Shark) you will need to replace both the controller (has Invacare logo with DK-PMA02/03 MK5) and the joystick (has Invacare logo with DK-REMI01 MK5 CSPJ on bottom) together.

Item Number	Note	Part Number	Description	Quantity Per	
				Package	Assembly
1	A,B	1131180	Kit, Joystick Assembly	1	1
			Tie Wrap (5-5/8" L)	1	5
			Label, Warning	1	1
2			Screw, Hex Flat Head (#10-32 x 1-3/4")	1	2
3			Post, Joystick (Black)	1	1
4			Bracket, Joystick Mounting, Black	1	1
5			Screw, Phillips Pan Head (#10-32 x 1-1/8")	1	2
6			Pin, Quick Release	1	2
7		1131181	Joystick, MK5 CSPJ	1	1
8			Package, Quick Release Pin	10	1
NOTE: A - Cable and Warning Label not shown but are part of this Kit B - Includes: Items 2-7, Cable Ties, and Warning Label					

Front Casters & Rear Wheels

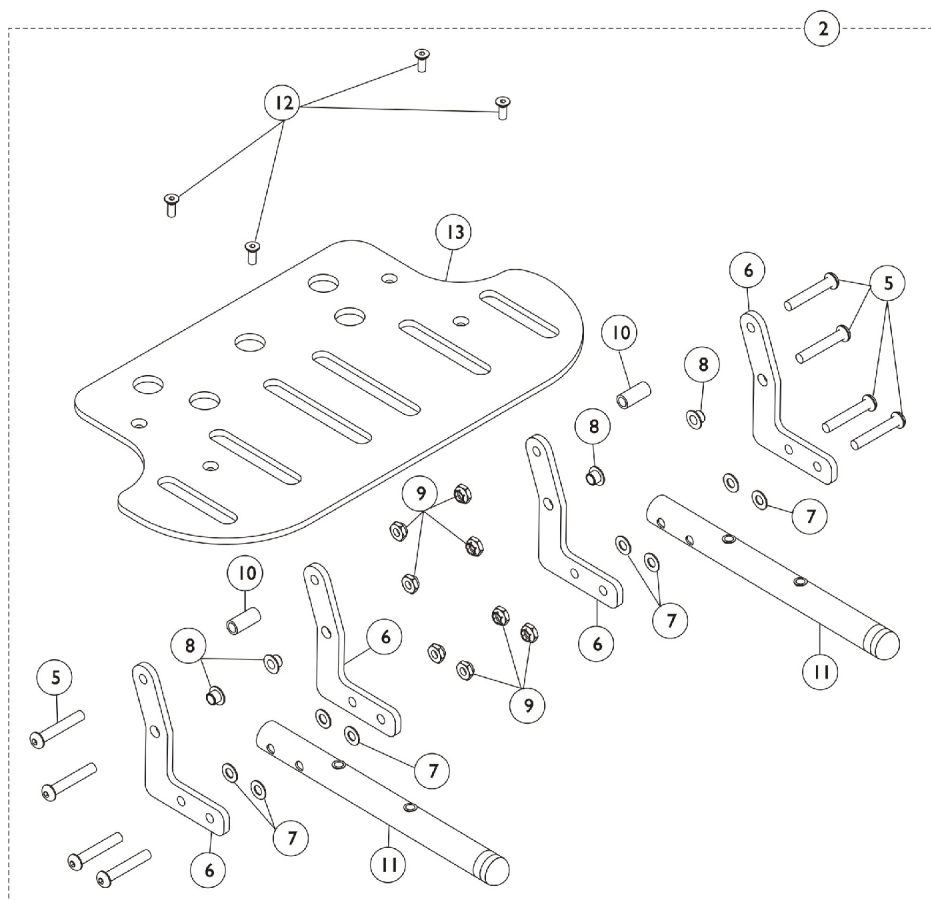
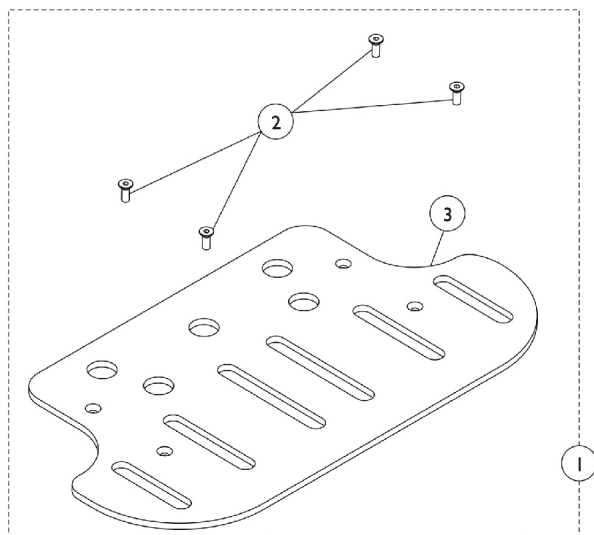


Front Casters & Rear Wheels

Item Number	Note	Part Number	Description	Quantity Per	
				Package	Assembly
1	A	1034352	Kit, Wheel with Tire and Bearings Assembly (6")	2	1
2			Wheel Assembly, 3 Spoke Urethane w/ Bearings, Dark Grey (6" x 1")	1	2
3	B	1131188	Kit, Caster and Fork Assembly	1	1
4			Cap, Head Tube, Black	1	1
5			Locknut (1/2-20)	1	1
6			Washer, Nylon (5/8 x 1 x 3/32")	1	1
7			Bearing, Flange (1/2")	1	2
8			Fork and Stem Assembly, Black (6 x 1" Urethane Caster)	1	1
9			Locknut (5/16-24)	1	1
10			Screw, Hex Head (5/16-24 x 2-1/4")	1	1
11			Spacer (5/16 x 7/16 x 1/4")	1	2
12			Wheel Assembly, 3 Spoke Urethane w/ Bearings, Dark Grey (6" x 1")	1	1
13		1131189	Package, Head Tube Cap	10	1
14	C	1126500	Kit, Pneumatic Rear Wheel Assembly	2	1
15			Axle, Quick Release	1	2
16			Wheel Assembly (12-1/2" x 2")	1	2
16	I	1126461	Tire, Pneumatic, Grey (12-1/2" x 2-1/4")	1	2
16	K	1126462-NLA	Tube, Inner (12-1/2 x 2-1/4")	1	2
17	D,F	1141778	Kit, Flat Free Rear Wheels w/ Axles (Pair)	1	1
18			Wheel, Pneumatic w/ Flat Free Insert (12-1/2" x 2-1/4")	1	2
19			Axle, Quick Release	1	2
20	E,F	1144033	Kit, Flat Free Wheels (Pair)	1	1
18			Wheel, Pneumatic w/ Flat Free Insert (12-1/2" x 2-1/4")	1	2
21	G,J	1144532-NLA	Kit, Pneumatic Rear Wheel Pair	1	1
16			Wheel Assembly (12-1/2" x 2")	2	1
22	H	1144531	Kit, Quick Release Axle Pair	1	1
15			Axle, Quick Release	2	1

NOTE: A - Includes: 2 ea. of Item #2
 B - Includes: Items 4-12
 C - Includes: Items 15-16
 D - Includes: Items 18-19
 E - Includes: 2ea. of Item #18
 F - The use of Flat Free Tires will reduce the Battery Range of the Chair.
 G - Includes: 2ea. of Item #16
 H - Includes: 2ea. of Item #15
 I - On this wheelchair model, this tire is used in a Pneumatic Wheel Assembly only.
 J - As of 9/5/07, Please use Kit # 1141778 as replacement parts.
 K - No Longer Available.

Footplate

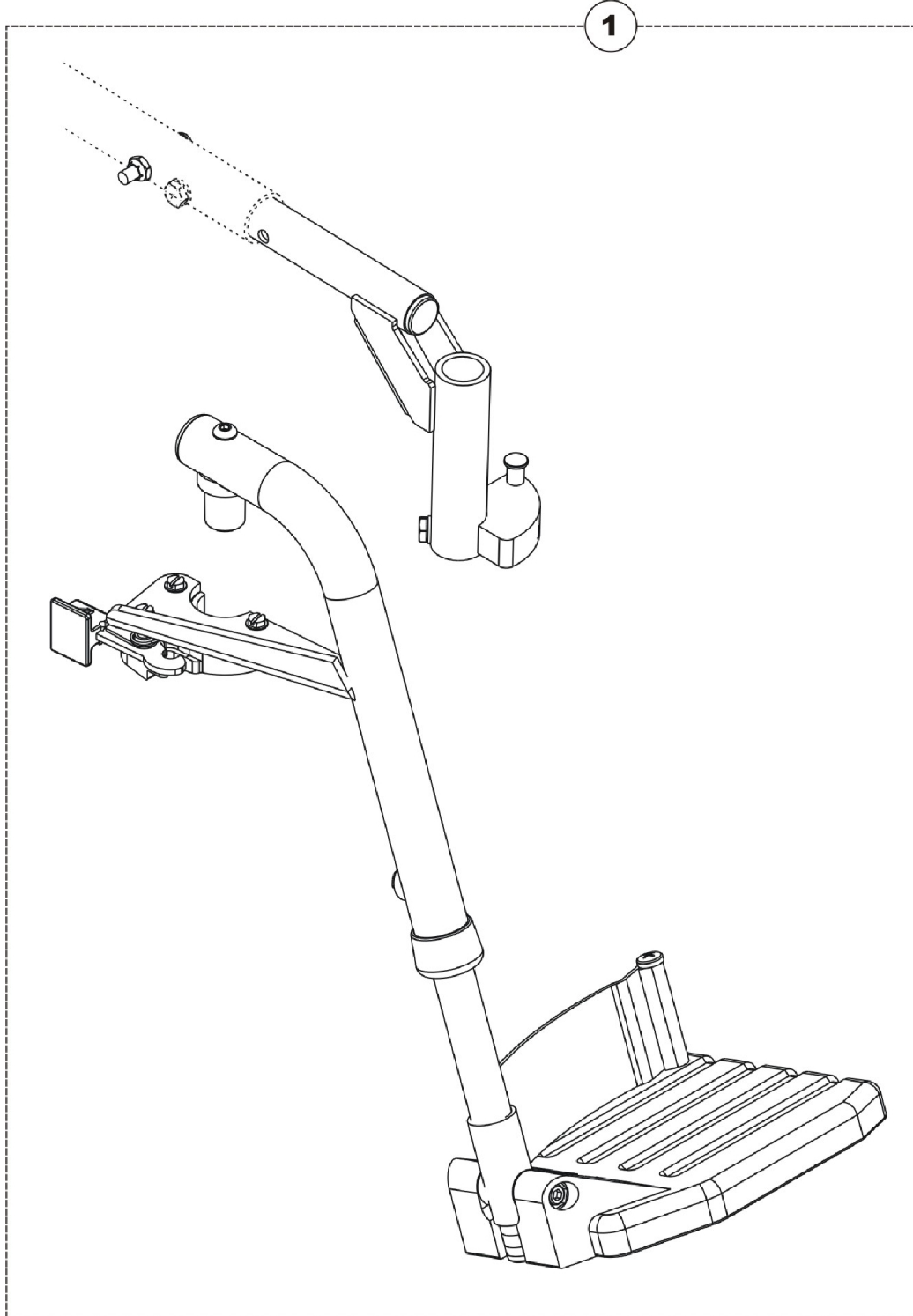


Footplate

Item Number	Note	Part Number	Description	Quantity Per	
				Package	Assembly
1	A	1131190	Kit, Footplate Assembly	1	1
2			Screw, Socket Flat Head (#10-32 x 1/2")	1	4
3			Footplate, Black	1	1
4	B	1126479	Kit, Footplate with Mounting Bracket and Hardware	1	1
5			Screw, Socket Button Head (1/4-20 x 1-1/2")	1	8
6			Bracket, Footplate, Black	1	4
7			Washer (1/4 x 1/2 x 1/16")	1	8
8			Bushing, Flanged	1	4
9			Locknut (1/4-20)	1	8
10			Spacer (1/4 x 3/8 x 13/16")	1	2
11			Tube, Support, Footplate, Black	1	2
12			Screw, Socket Flat Head (#10-32 x 1/2")	1	4
13			Footplate, Black	1	1
NOTE: A - Includes: Items 2-3 B - Includes: Items 5-13					

Swing-Away Footrest

For installation or adjustment instructions, please see your Owner's Manual.



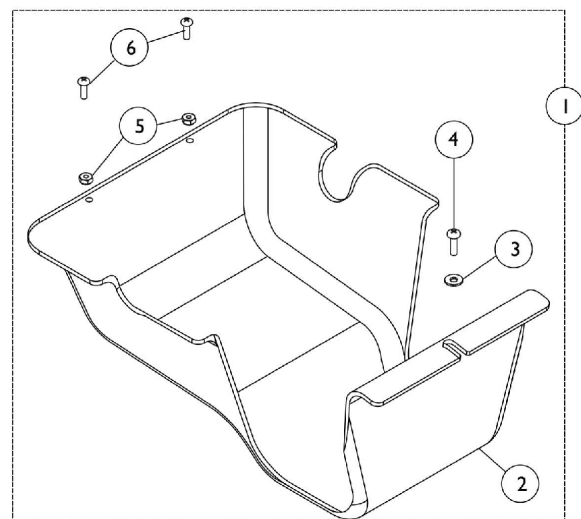
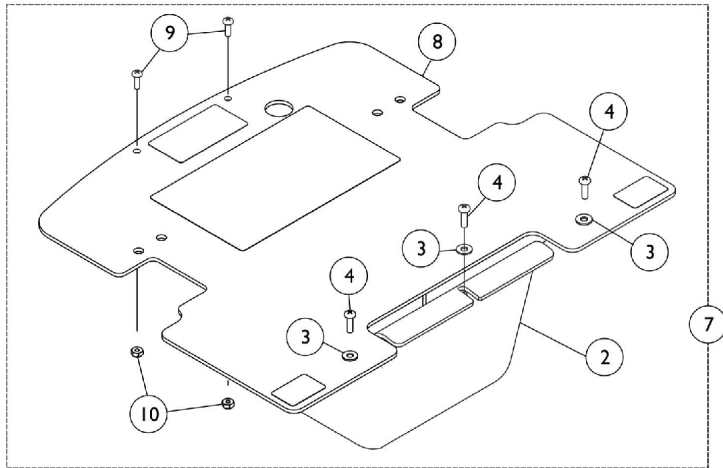
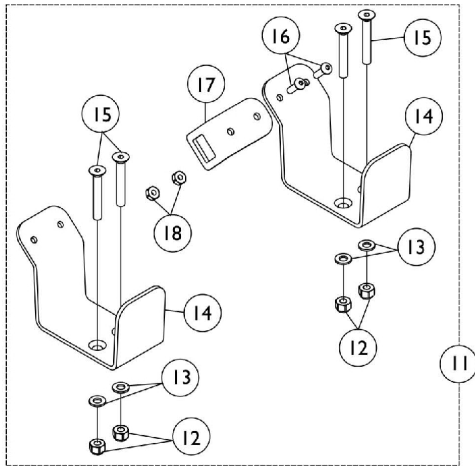
Swing-Away Footrest

For installation or adjustment instructions, please see your Owner's Manual.

Item Number	Note	Part Number	Description	Quantity Per	
				Package	Assembly
1		1142058	Footrest, 70 Deg Swing-Away - Right (Red)	1	1
			Footrest, 70 Degree - Right	1	1
			Front Rigging Hanger Assembly w/ Sector Block, Black - Right	1	1
			Screw, Socket Button Head (1/4-20 x 1-1/2")	1	1
			Locknut (1/4-20)	1	1
			Spacer (1/4 x 3/8 x 3/16")	1	1
1		1142059	Footrest, 70 Deg Swing-Away - Left (Red)	1	1
			Footrest, 70 Degree - Left	1	1
			Front Rigging Hanger Assembly w/ Sector Block, Black - Left	1	1
			Screw, Socket Button Head (1/4-20 x 1-1/2")	1	1
			Locknut (1/4-20)	1	1
			Spacer (1/4 x 3/8 x 3/16")	1	1
1		1142060	Footrest, 70 Deg Swing-Away - Right (Blue)	1	1
			Footrest, 70 Degree - Right	1	1
			Front Rigging Hanger Assembly w/ Sector Block, Black - Right	1	1
			Screw, Socket Button Head (1/4-20 x 1-1/2")	1	1
			Locknut (1/4-20)	1	1
			Spacer (1/4 x 3/8 x 3/16")	1	1
1		1142061	Footrest, 70 Deg Swing-Away - Left (Blue)	1	1
			Footrest, 70 Degree - Left	1	1
			Front Rigging Hanger Assembly w/ Sector Block, Black - Left	1	1
			Screw, Socket Button Head (1/4-20 x 1-1/2")	1	1
			Locknut (1/4-20)	1	1
			Spacer (1/4 x 3/8 x 3/16")	1	1

Shrouds and Battery Bracket

For At'm original
Before 9/5/05



Shrouds and Battery Bracket

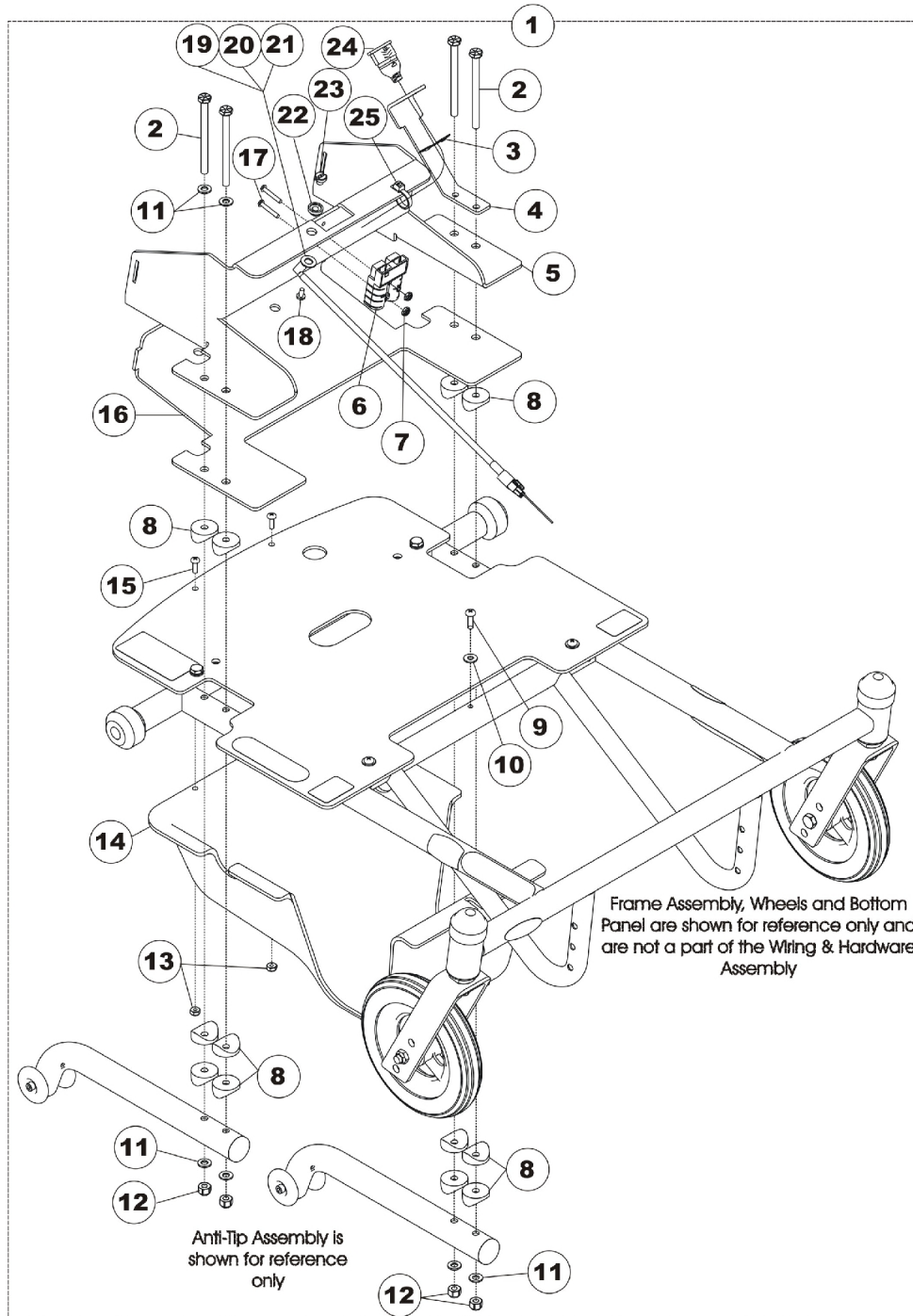
For At'm original Before 9/5/05

Item Number	Note	Part Number	Description	Quantity Per	
				Package	Assembly
1	A	1131191	Kit, Motor Shroud with Hardware	1	1
2			Shroud, Motor, Black	1	1
3			Washer, Plain (3/16 x 1/2 x 1/16")	1	1
4			Screw, Phillips Pan Head (#10-16 x 5/8")	1	1
5			Locknut (#8-32)	1	2
6			Screw, Phillips Pan Head (#8-32 x 1/2")	1	2
7	B	1131193	Kit, Shroud and Cover	1	1
2			Shroud, Motor, Black	1	1
3			Screw, Phillips Pan Head (#10-16 x 5/8")	1	3
4			Washer, Plain (3/16 x 1/2 x 1/16")	1	3
8			Bottom Panel Assembly	1	1
9			Screw, Phillips Pan Head (#8-32 x 1/2")	1	2
10	C	1126481	Locknut (#8-32)	1	2
11			Kit, Battery Mounting Bracket	1	1
12			Locknut (1/4-20)	1	4
13			Washer (1/4 x 1/2 x 1/16")	1	4
14			Bracket, Battery, Black	1	2
15			Screw, Socket Flat Head (1/4-20 x 1-3/4")	1	4
16			Screw, Socket Button Head (#10-32 x 5/8")	1	2
17			Plate, Plug	1	1
18			Locknut (#10-32)	1	2
NOTE: A - Includes: Items 2-6 B - Includes: Items 2-4 and 8-10 C - Includes: Items 12-18					

Shrouds and Battery Bracket

For the At'm QT only

After 9/5/05



Shrouds and Battery Bracket

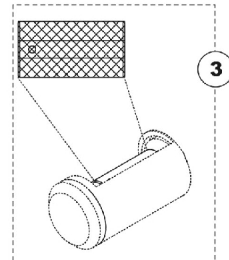
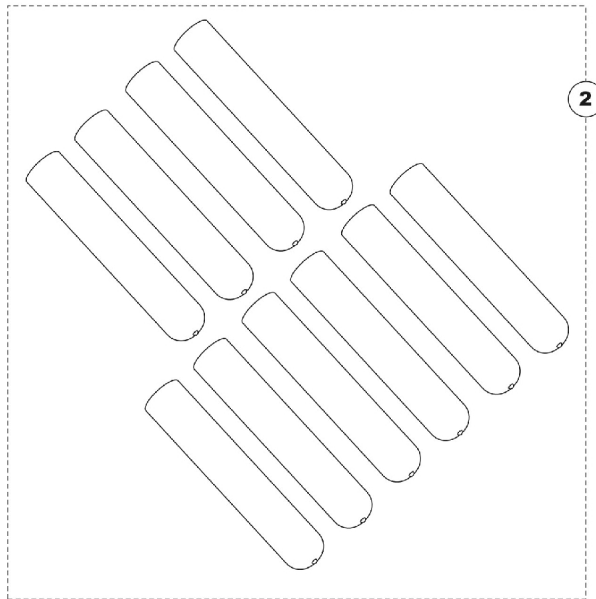
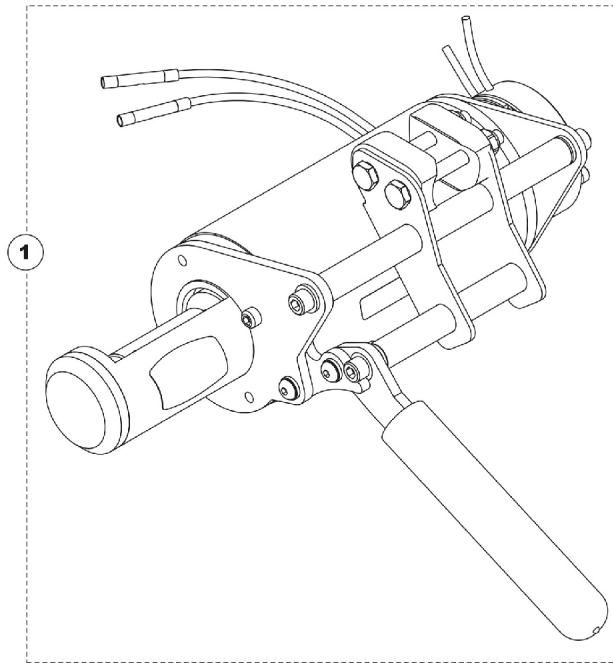
For the At'm QT only

After 9/5/05

Item Number	Note	Part Number	Description	Quantity Per	
				Package	Assembly
1	A,B	1132648	Kit, Battery Brackets and Motor Shroud	1	1
2			Screw, Hex Head (1/4-20 x 3-1/4")	1	4
3			Clip, Spring	1	1
4			Bracket, Joystick Plug, Black	1	1
5			Top, Battery Receiver	1	1
6			Cable, Battery Extension, Red Connector (100 Amp.)	1	1
7			Nut, Hex Lock (#6-32)	1	2
8			Spacer, Coved (1/4 x 1 x 9/16")	1	12
9			Screw, Phillips Pan Head (#10-16 x 5/8")	1	1
10			Washer, Plain (3/16 x 1/2 x 1/16")	1	1
11			Washer (1/4 x 1/2 x 1/16")	1	6
12			Locknut (1/4-20)	1	4
13			Locknut (#8-32)	1	2
14			Shroud, Motor, Black	1	1
15			Screw, Phillips Pan Head (#8-32 x 1/2")	1	2
16			Bottom, Battery Receiver	1	1
17			Screw, Phillips Pan Head (#6-32 x 7/8")	1	2
18			Screw, Phillips Pan Head (M4 x .7 x 8mm)	1	1
19			Harness, Drive Inhibit	1	1
20			Fastener, Tab	1	1
21			Washer, Nylon (3/8 x 3/4 x 1/16")	1	1
22			Spacer	1	1
23			Insert, Threaded Spacer	1	1
24			Cable, Joystick Extension	1	1
25			Tie Wrap (11-1/2" L)	1	1
NOTE: A - Includes: Items 2-25 B - Does NOT include: Frame, Anti-Tip, Wheels, or Bottom Panel.					

Motors

After 5/15/06 the Motor Bracket has changed. The New Motor Assemblies will fit on all chairs, existing and/or new.



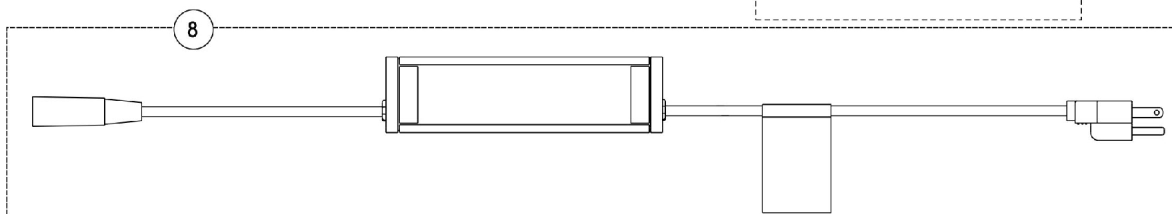
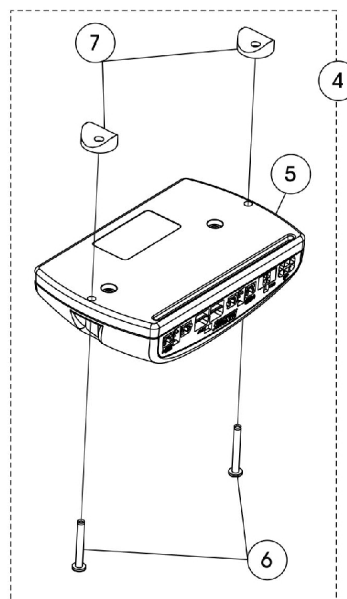
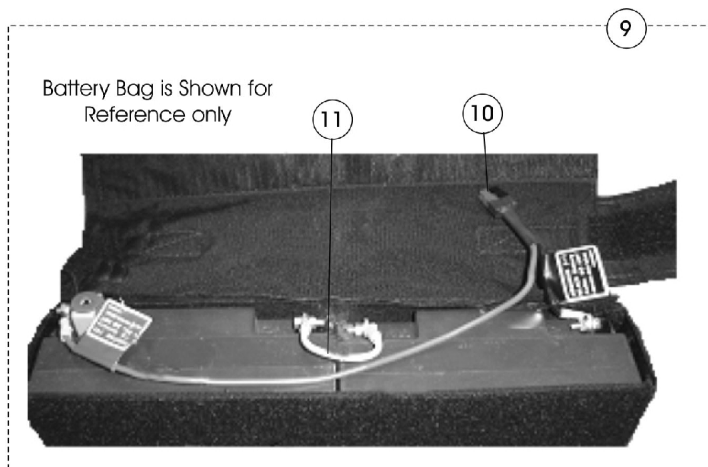
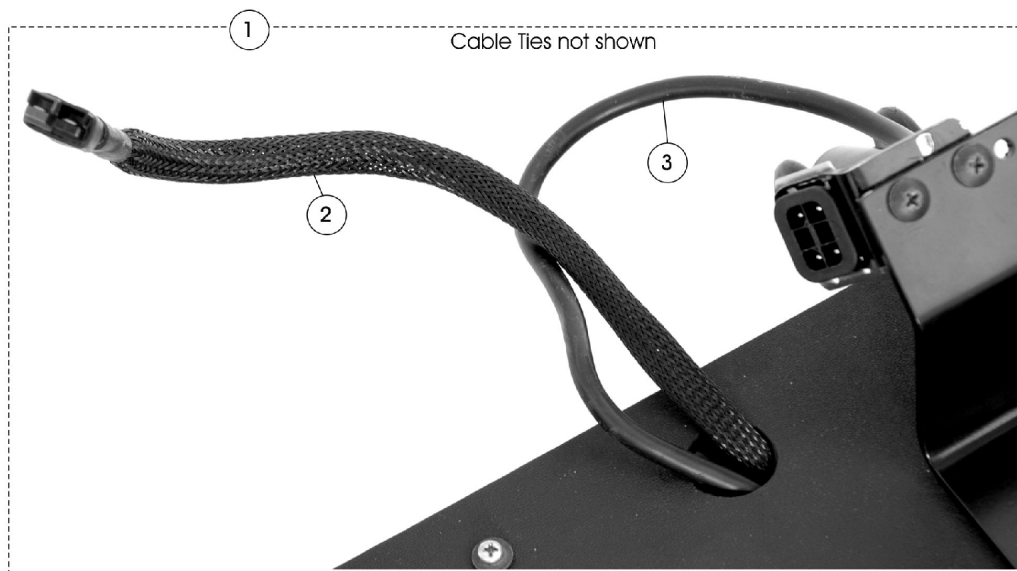
Motors

After 5/15/06 the Motor Bracket has changed. The New Motor Assemblies will fit on all chairs, existing and/or new.

Item Number	Note	Part Number	Description	Quantity Per	
				Package	Assembly
1	A	1144031	Motor with Hardware - Right	1	1
1	A	1144032	Motor with Hardware - Left	1	1
2		1131196	Package, Foam Hand Grip (4-7/8" L)	10	1
3	B	1132781-NLA	Kit, Knurled Drive Cylinder	1	1
			Cylinder, Drive, Knurled	1	1
			Pin, Roll (1/8 x 1")	1	1
3	B	1147487	Kit, Knurled Drive Cylinder - Steel	1	1
			Pin, Roll (1/8 x 1")	1	1
			Drive, Cylinder, Knurled - Steel	1	1
		1134145	Drive, Cylinder, Knurled - Steel	1	1
NOTE: A - After 5/15/06 the Motor Bracket has changed. The New Motor Assemblies will fit on all chairs, existing and/or new. B - Roll Pin is included with this kit but not shown.					

Battery, Controller, Cables, & Charger

"EZ" style and "At'm" style are NOT compatible. If replacing "EZ" chair joystick or controller (Noted by a label on the back that has DK-PMA01 Shark) you will need to replace both the controller (has Invacare logo with DK-PMA02/03 MK5) and the joystick (has Invacare logo with DK-REMI01 MK5 CSPJ on bottom) together.



Battery, Controller, Cables, & Charger

"EZ" style and "At'm" style are NOT compatible. If replacing "EZ" chair joystick or controller (Noted by a label on the back that has DK-PMA01 Shark) you will need to replace both the controller (has Invacare logo with DK-PMA02/03 MK5) and the joystick (has Invacare logo with DK-REMI01 MK5 CSPJ on bottom) together.

Item Number	Note	Part Number	Description	Quantity Per	
				Package	Assembly
1	A,B,G	1131197	Kit, Power Cables - Joystick and Battery (At'm original)	1	1
			Tie Wrap (5-5/8" L)	1	3
2			Cable, Battery	1	1
3			Cable, Joystick Extension	1	1
4	C	1131198	Kit, Controller with Hardware (At'm original & At'm QT)	1	1
5			Controller, MK5 NX-B	1	1
6			Screw, Phillips Pan Head (#10-32 x 1-3/8")	1	2
7			Spacer, Coved (1/4 x 1 x 9/16")	1	2
8	D	1121089	Charger, Battery, 3 Amp, Off Board	1	1
9	E,G	1131199	Kit, Battery Harness (At'm original)	1	1
10			Harness, Battery Wire with Circuit Breaker	1	1
11			Wire, Battery Jumper	1	1
	D,G	1128797	Cable, Adapter, Charger Jumper (At'm original)	1	1
	G,I	1126530	Upholstery, Battery Bag (At'm original)	1	1
	F,H	1135823	Kit, Power Cables & Hardware (At'm QT)	1	1
			Washer, Nylon (3/8 x 3/4 x 1/16")	1	1
			Screw, Phillips Pan Head (M4 x .7 x 8mm)	1	1
			Cable, Battery Extension, Red Connector (100 Amp.)	1	1
			Cable, Joystick Extension	1	1
			Clip, Spring	1	1
			Harness, Drive Inhibit	1	1
			Insert, Threaded Spacer	1	1
			Spacer	1	1
			Fastener, Tab	1	1
	F,H,I	1133676	Battery Box Assembly, At'm QT	1	1
NOTE: A - Cable Ties are not shown but a part of Kit # 1131197 B - Includes: Items 2-3 and Cable Ties C - Includes: Items 5-7 D - Used for Off-Chair Charging of the Battery Pack on both the At'm original and At'm QT. E - Includes: Battery Wire Harness and Battery Jumper Wire F - Not shown G - Used on At'm original only H - Used on the At'm QT after 9/5/05 I - Wiring Harnesses and Batteries are NOT Included.					

Batteries

Shown for Reference Only

Battery, Controller, Cables, & Charger

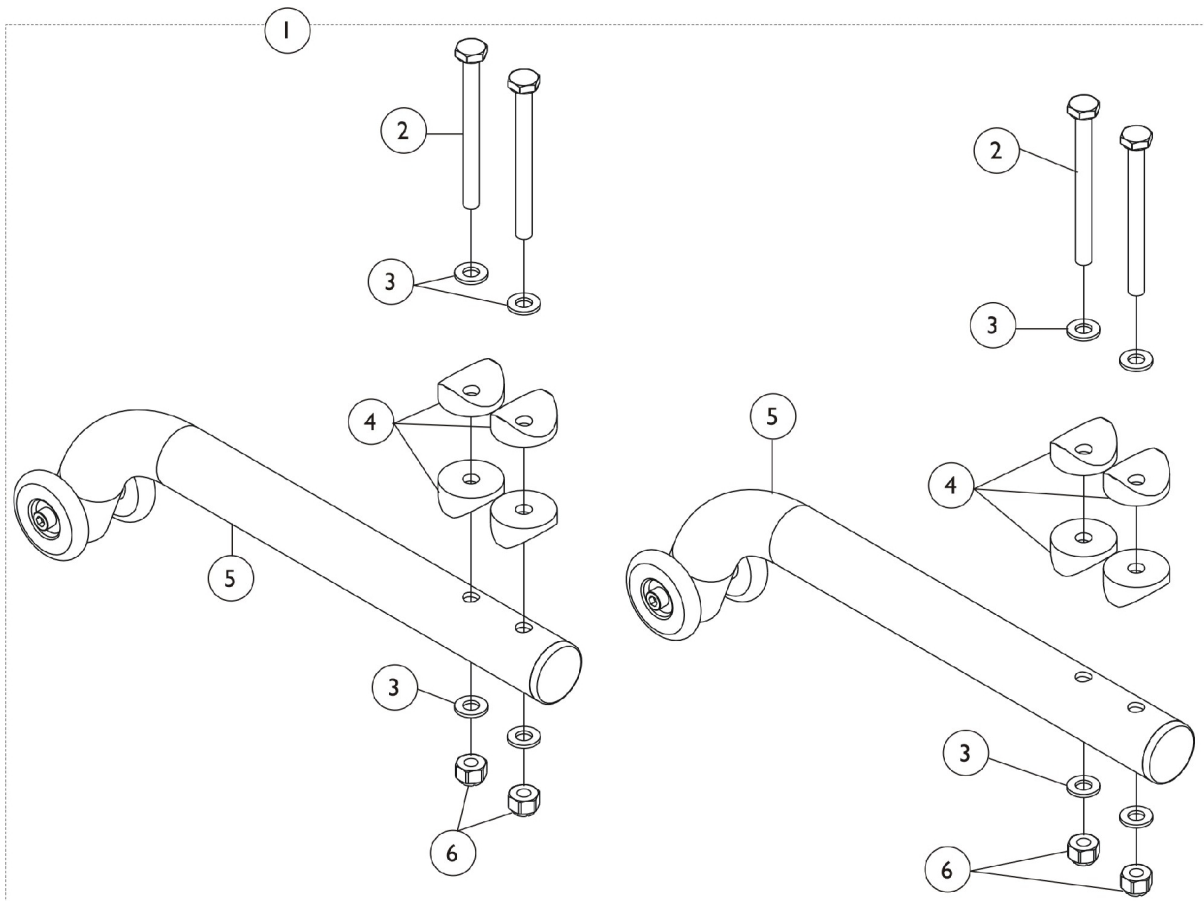
"EZ" style and "At'm" style are NOT compatible. If replacing "EZ" chair joystick or controller (Noted by a label on the back that has DK-PMA01 Shark) you will need to replace both the controller (has Invacare logo with DK-PMA02/03 MK5) and the joystick (has Invacare logo with DK-REMI01 MK5 CSPJ on bottom) together.

Batteries

Shown for Reference Only

Battery Number	Description
17AH	17 Amp Batteries (pair)
12AH-2	12 Amp Hour Batteries (pair)

Anti-Tips



Item Number	Note	Part Number	Description	Quantity Per	
				Package	Assembly
1	A	1131192	Kit, Anti-Tipper Assembly with Hardware	1	1
2			Screw, Hex Head (1/4-20 x 2-3/4")	1	4
3			Washer (1/4 x 1/2 x 1/16")	1	8
4			Spacer, Coved (1/4 x 1 x 9/16")	1	8
5			Anti-Tipper Assembly	1	2
6			Locknut (1/4-20)	1	4

NOTE: A - Includes: Items 2-6

Invacare Corporation

www.invacare.com



Yes, you can.™

One Invacare Way
Elyria, Oh USA
44036-2125
800-333-6900

Technical Support
800-832-4707
Florida Technical Support
407-321-5630

Customer Service
800-333-6900

©2009Invacare Corporation, Elyria, Ohio.
All rights reserved. Trademarks are
identified by the symbols™ and®. All
trademarks are owned by or licensed to
Invacare Corporation unless otherwise
noted.
(Revision 03/25/09).

Form No. 04-051