

Invacare® IVC™ Tracer® IV (After 9/30/03)
Excluding Government Chairs



Parts Catalog Usage Guide

The information contained in this document is subject to change without notice. This catalog contains service parts for Form No. 03-030. If you have any questions regarding this catalog, please contact one of our Customer Service Representatives.

For Customer Service Support Call:

1-800-333-6900

For Faxed In Orders Call:

1-800-678-4682 or

1-440-366-0709

For Technical Service Call:

1-800-832-4707

Literature Can Be Found at:

www.invacare.com or

1-800-828-6272

SYMBOL DEFINITION

Throughout this catalog you will notice letters to draw your attention to specific footnotes which are located at the bottom of the page or below specified charts.

Examples:

A,B,C etc. = Special Comments

NOTE: = General information pertaining to that specific page

NLA = No Longer Available

HARDWARE MEASUREMENTS

The measurements for the hardware will be listed as follows:

Screws, Bolts Diameter X Thread Count/Pitch X Length

Washers Inside Diameter X Outside Diameter X Thickness

Spacers Inside Diameter X Outside Diameter X Length

For your convenience, we have supplied an area for you to list your Invacare Representatives.

Name	Phone Numbers

©2009 Invacare Corporation, Elyria, Ohio. Invacare, the Medallion Design and Yes you can. are registered trademarks; Tracer is a registered trademark of Invacare Corporation.

TABLE of CONTENTS

Description	Page Number
Accessories - Miscellaneous	49
Accessories - Oxygen Holder - 1497	52
Accessories - Seat Accessories	51
Accessories -I.V. Rod and Bracket (2218)	54
Arms - Conventional Adjustable Height	15
Arms - Conventional Fixed Height Arm	20
Crossbraces and Hardware	9
Forks and Hardware	24
Frame and Frame Hardware	7
Front Rigging - Footrest Support Assembly, T93H	36
Front Rigging - Legrest Support Assembly - T94H	38
Front Riggings - Articulating Legrest Support - AHL4A / AHL4C	40
Front Riggings - Calf Pads	32
Front Riggings - Footrest and Legrest Accessories	33
Front Riggings - Pivot Slide Tube with Footplate	45
Front Riggings - Pivot Slide Tube with Footplate - AHL4A/C Legrests	43
Front Riggings - Quick Reference Chart	35
Packaging and Literature / Upholstery Colors	4
Seat Extensions	5
Upholstery - Back Upholstery with Hardware	13
Upholstery - Seat Upholstery with Hardware	11

TABLE of CONTENTS

Description	Page Number
Wheel Lock - Removable and Flip Back Arms	58
Wheel Lock - Removable and Flip Back Arms	60
Wheel Locks - Push & Pull - Before 4/14/07	25
Wheel Locks - Push to Lock - After 4/15/07	56
Wheels - Casters and Hardware	30
Wheels - Handrims & Attaching Hardware	29
Wheels - Rear Wheel Hardware	28
Wheels - Rear Wheels	27

Packaging and Literature / Upholstery Colors

NOTE: When adjusting or replacing parts, please refer to your Owner's Manual for assistance.

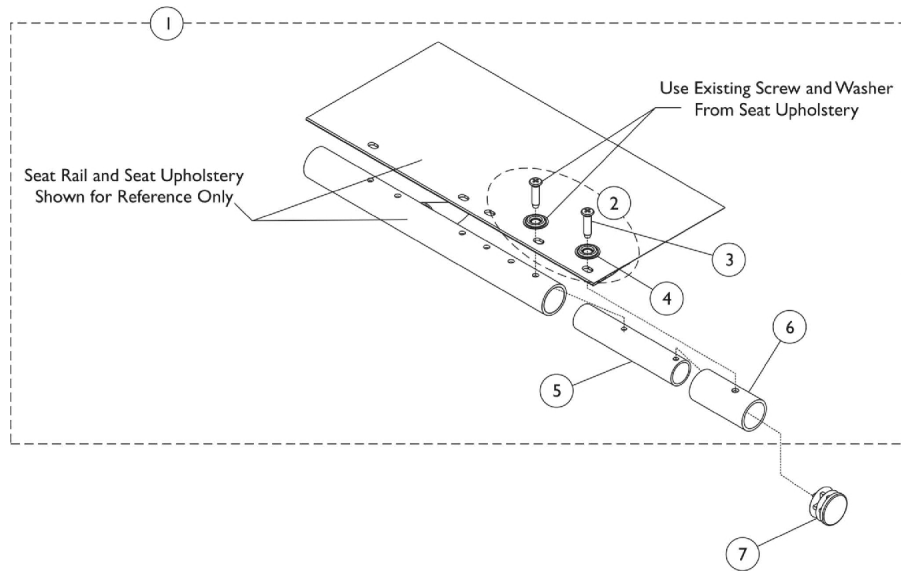
Part Number	Description
1110558	Owner's Manual
1055619	Carton
40131X041	Carton Insert
47568X002	Bag, Poly (34 x 12 x 38")
40131X162	Insert
NOTE: When adjusting or replacing parts, please refer to your Owner's Manual for assistance.	

Upholstery Colors

Part Number	Description
U240	Black Nylon
U67	Black Vinyl
U75	Dove Grey
U85	Dark Blue
U86	Ruby Red
U88	Camel
U92	Sky Blue
U550	Midnight Blue

Seat Extensions

NOTE: If your chair was built with a serial # starting with "03H" or "03I", please contact an Invacare Parts Specialist for replacement parts at 1-800-333-6900 Ext. 3722.



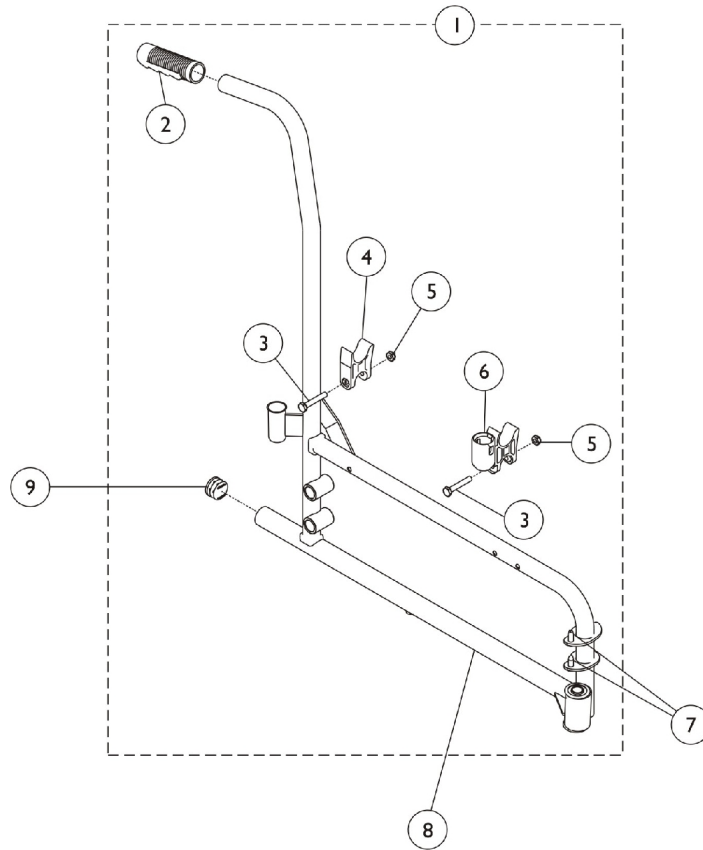
Seat Extensions

NOTE: If your chair was built with a serial # starting with "03H" or "03I", please contact an Invacare Parts Specialist for replacement parts at 1-800-333-6900 Ext. 3722.

Item Number	Note	Part Number	Description	Quantity Per	
				Package	Assembly
1	A,B	1119122	Kit, Seat Extension (2")	1	1
3			Screw, Phillips Oval Head (#12 x 7/8")	1	2
4			Washer (1/4 x 3/4 x 3/32")	1	2
5			Tube, Insert, Black	1	2
6			Spacer	1	2
2	C	1131378	Kit, Hardware	1	1
3			Screw, Phillips Oval Head (#12 x 7/8")	1	12
4			Washer (1/4 x 3/4 x 3/32")	1	12
7		1027095	Plug Button, Black (7/8")	1	1
NOTE: A - Includes items 3-6. B - For 20" seat depth, includes items 2-5 all at quantity 2. C - Includes 3 and 4.					

Frame and Hardware

NOTE: If your chair was built with a serial # starting with "03H" or "03I", please contact an Invacare Parts Specialist for replacement parts at 1-800-333-6900 Ext. 3722.



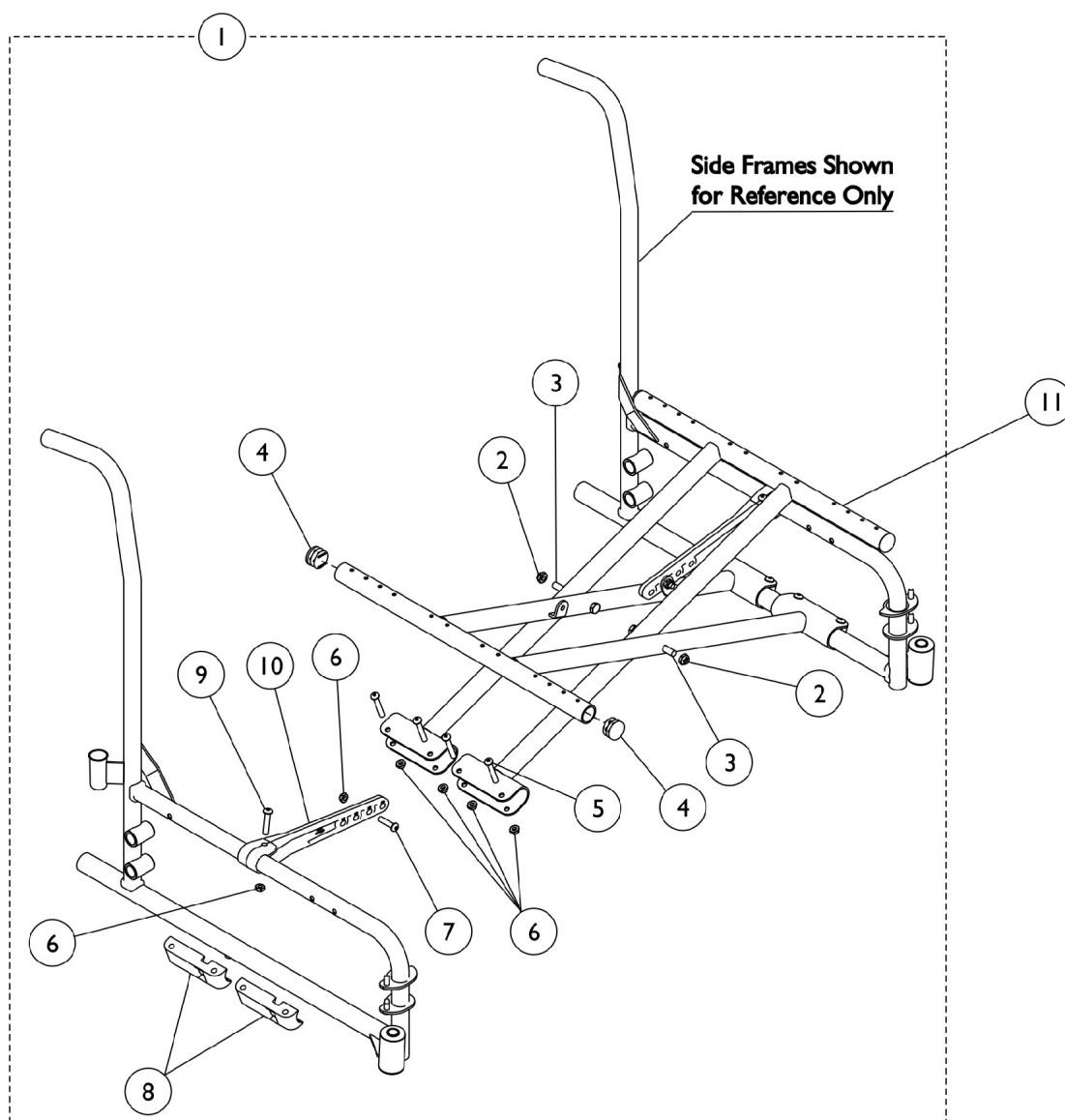
Frame and Hardware

NOTE: If your chair was built with a serial # starting with "03H" or "03I", please contact an Invacare Parts Specialist for replacement parts at 1-800-333-6900 Ext. 3722.

Item Number	Note	Part Number	Description	Quantity Per	
				Package	Assembly
1	A	1118227	Hardware, Frame Side	1	1
2		1021261	Grip, Hand (6")	1	1
3		16720X004	Screw, Hex Head (1/4-20 x 1-1/2")	1	2
4		1107805	H-Block	1	1
5		60275X000	Locknut (1/4-20)	1	2
6		1109938	H-Block with Socket Cup	1	1
7		1096781	Hardware Kit, Hinge Replacement	1	1
			Wrench, Allen (3/32")	1	1
			Cap, Threaded	1	4
			Washer, Locking Split (#10)	1	4
			Screw, Regulator (8-32 x 3/8")	1	4
8	B	1118225	Frame, Side - Right	1	1
8		1118226	Frame, Side, Chrome - Left	1	1
9		1029501	Plug Button, Black (1")	1	1
	C,D	15680X013	Anti-Rattle (1")	1	1
NOTE: A - Includes items 2-6. B - Use this plug button for chairs without rear anti-tippers. C - Anti-Rattle not shown, used in place of plug button for chairs with rear anti-tippers. D - Not shown.					

Crossbraces and Hardware

NOTE: If your chair was built with a serial # starting with "03H" or "03I", please contact an Invacare Parts Specialist for replacement parts at 1-800-333-6900 Ext. 3722.



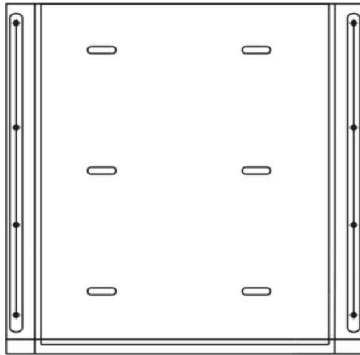
Crossbraces and Hardware

NOTE: If your chair was built with a serial # starting with "03H" or "03I", please contact an Invacare Parts Specialist for replacement parts at 1-800-333-6900 Ext. 3722.

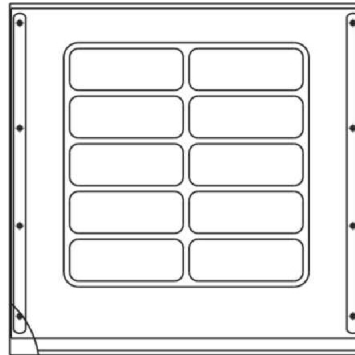
Item Number	Note	Part Number	Description	Quantity Per	
				Package	Assembly
1	A	1118201	Hardware, X-Brace (18 - 24" W)	1	1
2		60264X001	Locknut (5/16-24)	1	2
3		40317X001	Screw, Hex Head (5/16-24 x 2-3/4")	1	2
4		1027095	Plug Button, Black (7/8")	1	4
5		1008495	Screw, Socket Button Head (1/4-20 x 1-1/2")	1	8
6		60275X000	Locknut (1/4-20)	1	12
7		1009837	Screw, Socket Button Head (1/4-20 x 1")	1	2
8		1012172	Clamp, Saddle	1	4
9		1008432	Screw, Socket Button Head (1/4-20 x 1-1/4")	1	2
10		1118199	Link, Pivot, Black (18 - 24" W)	1	2
11		1118206	Crossbrace, Black (18" W)	1	2
11		1117405	Crossbrace, Black (20" W)	1	2
11		1117406	Crossbrace, Black (22" W)	1	2
11		1117407	Crossbrace, Black (24" W)	1	2
NOTE: A - Includes items 2-10.					

Seat Upholstery and Hardware Kits

NOTE: If your chair was built with a serial # starting with "03H" or "03I", please contact an Invacare Parts Specialist for replacement parts at 1-800-333-6900 Ext. 3722.



Seat Upholstery - Nylon



Seat Upholstery - Vinyl

Seat Upholstery and Hardware Kits

NOTE: If your chair was built with a serial # starting with "03H" or "03I", please contact an Invacare Parts Specialist for replacement parts at 1-800-333-6900 Ext. 3722.

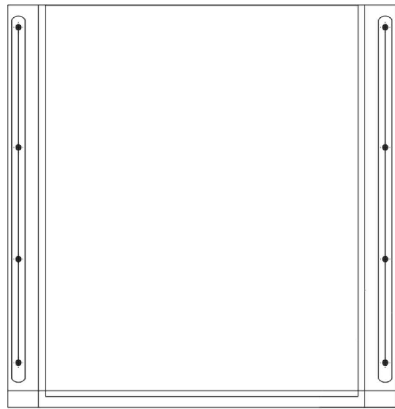
Chair Width x Depth	Vinyl Upholstery	Nylon Upholstery
18" x 18"	8881127512 See Note(s) B, A	1127579 See Note(s) B
18" x 20"	8881127588 See Note(s) B, A	1127580 See Note(s) B
20" x 18"	8881135515 See Note(s) B, A	1127536 See Note(s) B
20" x 20"	8881127590 See Note(s) B, A	1127582 See Note(s) B
22" x 18"	8881127591 See Note(s) B, A	1127538 See Note(s) B
22" x 20"	8881127592 See Note(s) B, A	1127584 See Note(s) B
24" x 18"	8881127593 See Note(s) B, A	1127585 See Note(s) B
24" x 20"	8881127594 See Note(s) B, A	1127586 See Note(s) B
NOTE: A - Specify upholstery color when ordering. See category titled, "Upholstery and Frame Colors." B - Upholstery kits include hardware.		

Hardware - Seat Upholstery

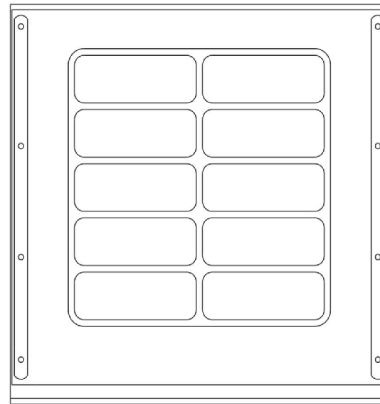
Part Number
1131378
12 each - Washer (1/4 x 3/4 x 3/32")
12 each - Screw (#12 x 7/8")

Back Upholstery

NOTE: If your chair was built with a serial # starting with "03H" or "03I", please contact an Invacare Parts Specialist for replacement parts at 1-800-333-6900 Ext. 3722.



Back Upholstery - Nylon



Back Upholstery - Vinyl

Back Upholstery

NOTE: If your chair was built with a serial # starting with "03H" or "03I", please contact an Invacare Parts Specialist for replacement parts at 1-800-333-6900 Ext. 3722.

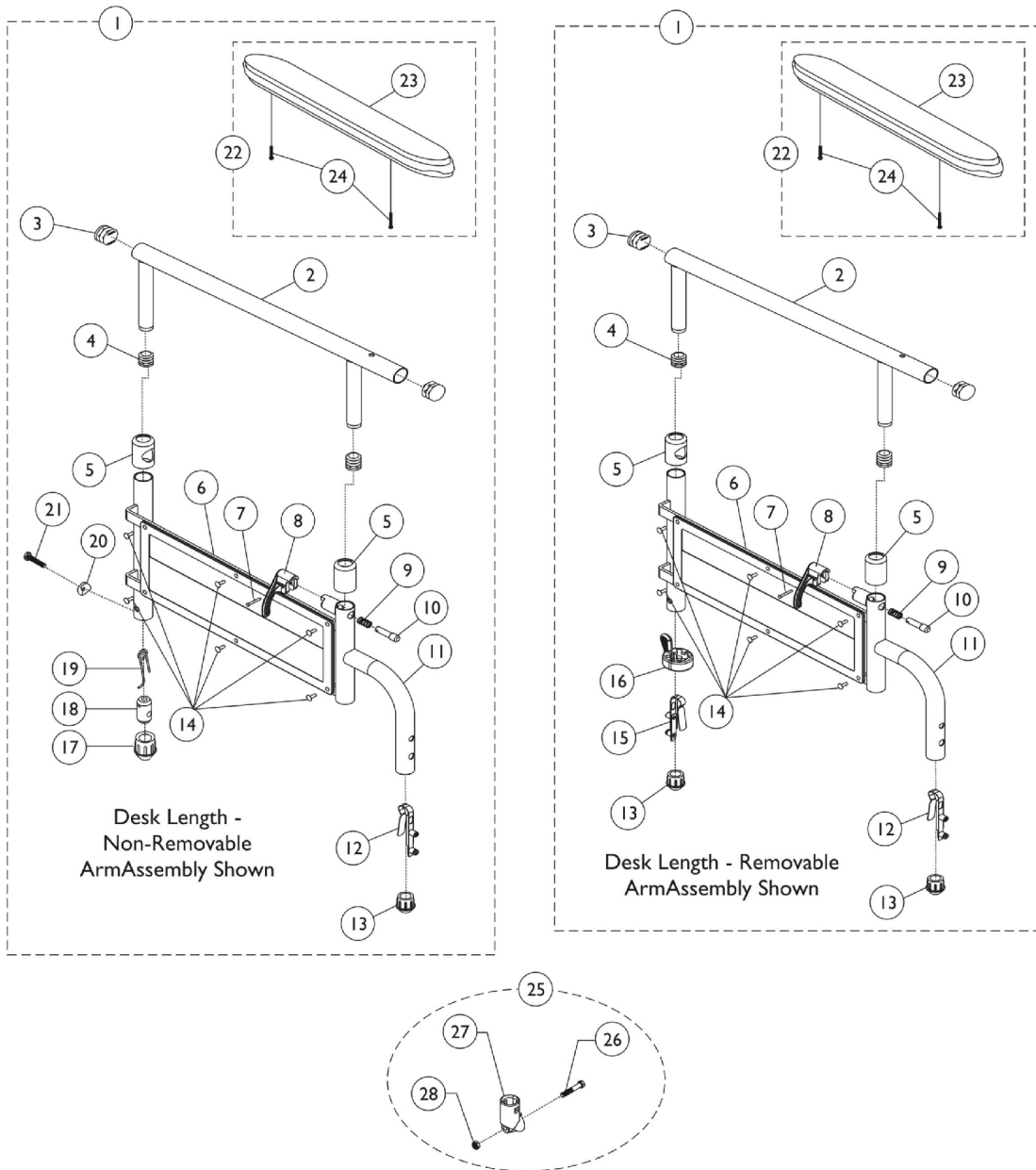
Chair Width x Height	Vinyl Upholstery	Nylon Upholstery
18" x 16"	8881127476	1135517
	See Note(s) B, A	See Note(s) B
20" x 16"	8881127576	1135518
	See Note(s) B, A	See Note(s) B
22" x 16"	8881135516	1135519
	See Note(s) B, A	See Note(s) B
24" x 16"	8881127578	1127574
	See Note(s) B, A	See Note(s) B
NOTE: A - Specify upholstery color when ordering. See category titled, "Upholstery and Frame Colors." B - Upholstery kits include hardware.		

Hardware for Back Upholstery

Part Number
1131378
12 each - Washer (1/4 x 3/4 x 3/32")
12 each - Screw (#12 x 7/8")

Conventional Adjustable Height Arms

NOTE: If your chair was built with a serial # starting with "03H" or "03I", please contact an Invacare Parts Specialist for replacement parts at 1-800-333-6900 Ext. 3722.



Conventional Adjustable Height Arms

NOTE: If your chair was built with a serial # starting with "03H" or "03I", please contact an Invacare Parts Specialist for replacement parts at 1-800-333-6900 Ext. 3722.

Item Number	Note	Part Number	Description	Quantity Per	
				Package	Assembly
1	A,B	8881127561	Kit, Armrest, Full Length, Chrome - Right (Style 19)	1	1
2			Tube, Arm, Full Length, Chrome - Right/Left	1	1
3			Plug Button, Black (7/8")	1	2
4			Plug Button, Black (5/8")	1	2
5			Anti-Rattle	1	2
6			Guard, Clothing	1	1
7			Rivet, Tubular	1	1
8			Handle, Lock, Black - Right	1	1
9			Spring, Arm Lock	1	1
10			Pin, Locking	1	1
11			Armrest, Adjustable Height, Chrome	1	1
12			Spring, Torsion w/ Button	1	1
13			Plug, Black (3/4")	1	2
14			Rivet	1	6
15			Spring, Torsion with Button Lock	1	1
16			Handle, Quad Release	1	1
23			Pad, Arm, Full Length	1	1
24			Package, Screw Phillips Pan Head (#10-32 x 1-1/8")	1	2
1	A,B	8881127559	Kit, Armrest, Full Length, Chrome - Left (Style 19)	1	1
2			Tube, Arm, Full Length, Chrome - Right/Left	1	1
3			Plug Button, Black (7/8")	1	2
4			Plug Button, Black (5/8")	1	2
5			Anti-Rattle	1	2
6			Guard, Clothing	1	1
7			Rivet, Tubular	1	1
8			Handle, Lock, Black - Left	1	1
9			Spring, Arm Lock	1	1
10			Pin, Locking	1	1
11			Armrest, Adjustable Height, Chrome	1	1
12			Spring, Torsion w/ Button	1	1
13			Plug, Black (3/4")	1	2
14			Rivet	1	6
15			Spring, Torsion with Button Lock	1	1
16			Handle, Quad Release	1	1
23			Pad, Arm, Full Length	1	1
24			Package, Screw Phillips Pan Head (#10-32 x 1-1/8")	1	2
1	A,B	8881135513	Kit, Armrest, Desk Length, Chrome - Right (Style 29)	1	1
2			Spring, Torsion with Button Lock	1	1
3			Plug Button, Black (7/8")	1	1
4			Plug Button, Black (5/8")	1	1
5			Anti-Rattle	1	2

Conventional Adjustable Height Arms

NOTE: If your chair was built with a serial # starting with "03H" or "03I", please contact an Invacare Parts Specialist for replacement parts at 1-800-333-6900 Ext. 3722.

Item Number	Note	Part Number	Description	Quantity Per	
				Package	Assembly
6			Guard, Clothing	1	1
7			Rivet, Tubular	1	1
8			Handle, Lock, Black - Right	1	1
9			Spring, Arm Lock	1	1
10			Pin, Locking	1	1
11			Armrest, Adjustable Height, Chrome	1	1
12			Spring, Torsion w/ Button	1	1
13			Plug, Black (3/4")	1	2
14			Rivet	1	6
15			Tube, Arm, Desk Length, Chrome - Right/Left	1	1
16			Handle, Quad Release	1	1
23			Pad, Arm, Desk Length	1	1
24			Package, Screw Phillips Pan Head (#10-32 x 1-1/8")	1	1
1	A,B	8881135514	Kit, Armrest, Desk Length, Chrome - Left (Style 29)	1	1
2			Tube, Arm, Desk Length, Chrome - Right/Left	1	1
3			Plug Button, Black (7/8")	1	1
4			Plug Button, Black (5/8")	1	1
5			Anti-Rattle	1	2
6			Guard, Clothing	1	1
7			Rivet, Tubular	1	1
8			Handle, Lock, Black - Left	1	1
9			Spring, Arm Lock	1	1
10			Pin, Locking	1	1
11			Armrest, Adjustable Height, Chrome	1	1
12			Spring, Torsion w/ Button	1	1
13			Plug, Black (3/4")	1	2
14			Rivet	1	6
15			Spring, Torsion with Button Lock	1	1
16			Handle, Quad Release	1	1
23			Pad, Arm, Desk Length	1	1
24			Package, Screw Phillips Pan Head (#10-32 x 1-1/8")	1	1
1	C,D	8881127562	Kit, Armrest, Full Length, Chrome - Right (Style 19)	1	1
2			Tube, Arm, Full Length, Chrome - Right/Left	1	1
3			Plug Button, Black (7/8")	1	2
4			Plug Button, Black (5/8")	1	2
5			Anti-Rattle	1	2
6			Guard, Clothing	1	1
7			Rivet, Tubular	1	1
8			Handle, Lock, Black - Right	1	1
9			Spring, Arm Lock	1	1
10			Pin, Locking	1	1
11			Armrest, Adjustable Height, Chrome	1	1

Conventional Adjustable Height Arms

NOTE: If your chair was built with a serial # starting with "03H" or "03I", please contact an Invacare Parts Specialist for replacement parts at 1-800-333-6900 Ext. 3722.

Item Number	Note	Part Number	Description	Quantity Per	
				Package	Assembly
12			Spring, Torsion w/ Button	1	1
13			Plug, Black (3/4")	1	1
14			Rivet	1	6
17			Plug, Armrest, Black (3/4")	1	1
18			Insert, Threaded	1	1
19			Spring, Release	1	1
20			Spacer, Coved (1/4 x 11/16 x 1/2")	1	1
21			Bolt, Hex Head Cap (1/4-20 x 3/4")	1	1
23			Pad, Arm, Full Length	1	1
24			Package, Screw Phillips Pan Head (#10-32 x 1-1/8")	1	2
1	C,D	8881127560	Kit, Armrest, Full Length, Chrome - Left (Style 19)	1	1
2			Tube, Arm, Full Length, Chrome - Right/Left	1	1
3			Plug Button, Black (7/8")	1	2
4			Plug Button, Black (5/8")	1	2
5			Anti-Rattle	1	2
6			Guard, Clothing	1	1
7			Rivet, Tubular	1	1
8			Handle, Lock, Black - Left	1	1
9			Spring, Arm Lock	1	1
10			Pin, Locking	1	1
11			Armrest, Adjustable Height, Chrome	1	1
12			Spring, Torsion w/ Button	1	1
13			Plug, Black (3/4")	1	1
14			Rivet	1	6
17			Plug, Armrest, Black (3/4")	1	1
18			Insert, Threaded	1	1
19			Spring, Release	1	1
20			Spacer, Coved (1/4 x 11/16 x 1/2")	1	1
21			Bolt, Hex Head Cap (1/4-20 x 3/4")	1	1
23			Pad, Arm, Full Length	1	1
24			Package, Screw Phillips Pan Head (#10-32 x 1-1/8")	1	2
22	E	8881127510	Kit, Arm Pad w/Screws - Desk Length	1	1
23			Pad, Arm, Desk Length	1	1
24			Package, Screw Phillips Pan Head (#10-32 x 1-1/8")	1	2
22	E	8881127509	Kit, Arm Pad w/Screws - Full Length	1	1
23			Pad, Arm, Full Length	1	1
24			Package, Screw Phillips Pan Head (#10-32 x 1-1/8")	1	2
25	F	1058139	Kit, Armrest Hardware	1	1
26			Cup, Socket Pivot	1	1
27			Screw, Hex Head (1/4-20 x 1-3/8")	1	1
28			Locknut (1/4-20)	1	1
	G,I	1121162	Arm Base Assembly, Chrome - Right	1	1

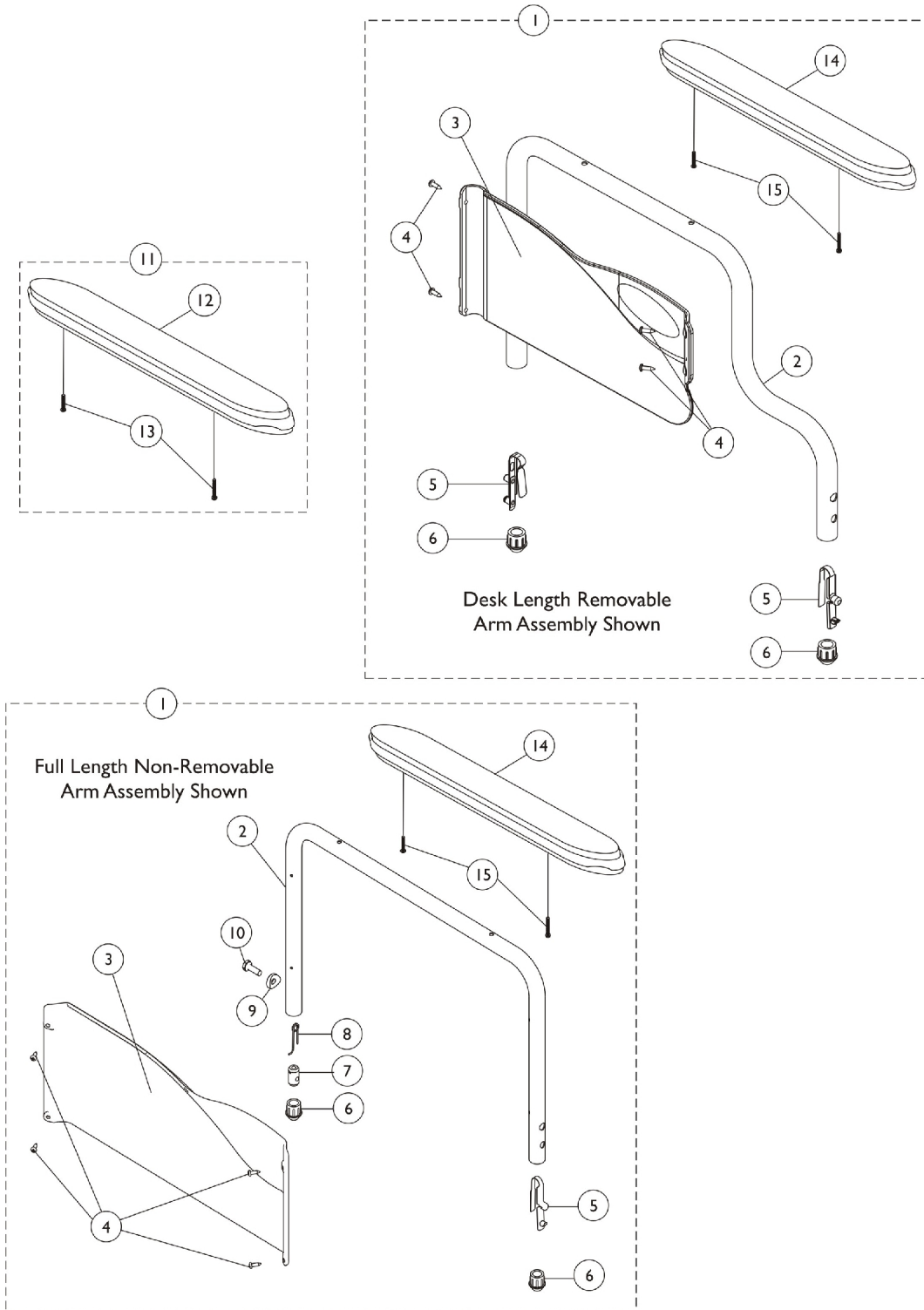
Conventional Adjustable Height Arms

NOTE: If your chair was built with a serial # starting with "03H" or "03I", please contact an Invacare Parts Specialist for replacement parts at 1-800-333-6900 Ext. 3722.

Item Number	Note	Part Number	Description	Quantity Per	
				Package	Assembly
	G,I	1121163	Arm Base Assembly, Chrome - Left	1	1
	H,I	1038460	Arm Tube Assembly w/ Plug Buttons, Desk Length, Chrome - Right/Left	1	1
	J	7100053	Arm Lock Assembly, Black - Right	1	1
			Handle, Lock, Black - Right	1	1
			Rivet, Tubular	1	2
			Pin, Locking	1	2
			Spring, Arm Lock	1	2
	J	7100054	Arm Lock Assembly, Black - Left	1	1
			Handle, Lock, Black - Left	1	1
			Rivet, Tubular	1	2
			Pin, Locking	1	2
			Spring, Arm Lock	1	2
NOTE: A - Removable Arm. B - Includes items 2-16, 23 and 24. C - Non-Removable. D - Includes items 2-14, 17-21, 23 and 24. E - Includes items 23 and 24. F - Includes items 26-28. G - Includes items 2-14 and 17-21. H - Includes items 2-4. I - Please contact an Invacare Parts Specialist to order this item. J - Not shown. Includes items 7-10.					

Conventional Fixed Height

NOTE: If your chair was built with a serial # starting with "03H" or "03I", please contact an Invacare Parts Specialist for replacement parts at 1-800-333-6900 Ext. 3722.



Conventional Fixed Height

NOTE: If your chair was built with a serial # starting with "03H" or "03I", please contact an Invacare Parts Specialist for replacement parts at 1-800-333-6900 Ext. 3722.

Item Number	Note	Part Number	Description	Quantity Per	
				Package	Assembly
1	A,B	8881127565	Kit, Armrest, Desk Length, Chrome - Right (Style 28)	1	1
			Armrest, Desk Length, Chrome - Right	1	1
			Screw, Self Tapping (#6-20 x 1/2")	1	4
			Guard, Clothing, Desk Length - Right	1	1
			Spring, Torsion w/ Button	1	2
			Plug Button, Arm Tube, Black (3/4")	1	2
			Package, Screw Phillips Pan Head (#10-32 x 1-1/8")	1	2
			Pad, Arm, Desk Length	1	1
1	A,B	8881127563	Kit, Armrest, Desk Length, Chrome - Left (Style 28)	1	1
			Armrest, Desk Length, Chrome - Left	1	1
			Screw, Self Tapping (#6-20 x 1/2")	1	4
			Guard, Clothing, Desk Length - Left	1	1
			Spring, Torsion w/ Button	1	2
			Plug Button, Arm Tube, Black (3/4")	1	2
			Package, Screw Phillips Pan Head (#10-32 x 1-1/8")	1	2
			Pad, Arm, Desk Length	1	1
1	C,D	8881127566	Kit, Armrest, Desk Length, Chrome - Right (Style 28)	1	1
2			Armrest, Desk Length, Chrome - Right	1	1
3			Guard, Clothing, Desk Length - Right	1	1
4			Screw, Self Tapping (#6-20 x 1/2")	1	4
6			Spring, Torsion w/ Button	1	1
7			Plug Button, Arm Tube, Black (3/4")	1	2
9			Insert, Threaded	1	1
10			Spring, Release	1	1
11			Bolt, Hex Head Cap (1/4-20 x 3/4")	1	1
12			Spacer, Coved (1/4 x 11/16 x 1/2")	1	1
14			Pad, Arm, Desk Length	1	1
15			Package, Screw Phillips Pan Head (#10-32 x 1-1/8")	1	2
1	C,D	8881127564	Kit, Armrest, Desk Length, Chrome - Left (Style 28)	1	1
2			Armrest, Desk Length, Chrome - Left	1	1
3			Guard, Clothing, Desk Length - Left	1	1
4			Screw, Self Tapping (#6-20 x 1/2")	1	4
6			Spring, Torsion w/ Button	1	1
7			Plug Button, Arm Tube, Black (3/4")	1	2
9			Insert, Threaded	1	1
10			Spring, Release	1	1
11			Spacer, Coved (1/4 x 11/16 x 1/2")	1	1
12			Bolt, Hex Head Cap (1/4-20 x 3/4")	1	1
14			Pad, Arm, Desk Length	1	1
15			Package, Screw Phillips Pan Head (#10-32 x 1-1/8")	1	2
1	A,B	8881127569	Kit, Armrest, Full Length, Chrome - Right (Style 18)	1	1

Conventional Fixed Height

NOTE: If your chair was built with a serial # starting with "03H" or "03I", please contact an Invacare Parts Specialist for replacement parts at 1-800-333-6900 Ext. 3722.

Item Number	Note	Part Number	Description	Quantity Per	
				Package	Assembly
1	A,B	8881127567	Armrest, Full Length, Chrome - Right	1	1
			Guard, Clothing, Full Length - Right	1	1
			Screw, Self Tapping (#6-20 x 1/2")	1	4
			Spring, Torsion w/ Button	1	2
			Plug Button, Arm Tube, Black (3/4")	1	2
			Pad, Arm, Full Length	1	1
			Package, Screw Phillips Pan Head (#10-32 x 1-1/8")	1	2
			Kit, Armrest, Full Length, Chrome - Left (Style 18)	1	1
			Armrest, Full Length, Chrome - Left	1	1
			Guard, Clothing, Full Length - Left	1	1
			Screw, Self Tapping (#6-20 x 1/2")	1	4
			Spring, Torsion w/ Button	1	2
			Plug Button, Arm Tube, Black (3/4")	1	2
			Pad, Arm, Full Length	1	1
			Package, Screw Phillips Pan Head (#10-32 x 1-1/8")	1	2
1	C,D	8881127570	Kit, Armrest, Full Length, Chrome - Right (Style 18)	1	1
2			Armrest, Full Length, Chrome - Right	1	1
3			Guard, Clothing, Full Length - Right	1	1
4			Screw, Self Tapping (#6-20 x 1/2")	1	4
6			Spring, Torsion w/ Button	1	1
7			Plug Button, Arm Tube, Black (3/4")	1	2
9			Insert, Threaded	1	1
10			Spring, Release	1	1
11			Bolt, Hex Head Cap (1/4-20 x 3/4")	1	1
12			Spacer, Coved (1/4 x 11/16 x 1/2")	1	1
14			Pad, Arm, Full Length	1	1
15			Package, Screw Phillips Pan Head (#10-32 x 1-1/8")	1	2
1	C,D	8881127568	Kit, Armrest, Full Length, Chrome - Left (Style 18)	1	1
2			Armrest, Full Length, Chrome - Left	1	1
3			Guard, Clothing, Full Length - Left	1	1
4			Screw, Self Tapping (#6-20 x 1/2")	1	4
6			Spring, Torsion w/ Button	1	1
7			Plug Button, Arm Tube, Black (3/4")	1	2
9			Insert, Threaded	1	1
10			Spring, Release	1	1
11			Bolt, Hex Head Cap (1/4-20 x 3/4")	1	1
12			Spacer, Coved (1/4 x 11/16 x 1/2")	1	1
14			Pad, Arm, Full Length	1	1
15			Package, Screw Phillips Pan Head (#10-32 x 1-1/8")	1	2
11	E	8881127509	Kit, Arm Pad w/Screws - Full Length	1	1
12			Pad, Arm, Full Length	1	1
13			Package, Screw Phillips Pan Head (#10-32 x 1-1/8")	1	2
11	E	8881127510	Kit, Arm Pad w/Screws - Desk Length	1	1

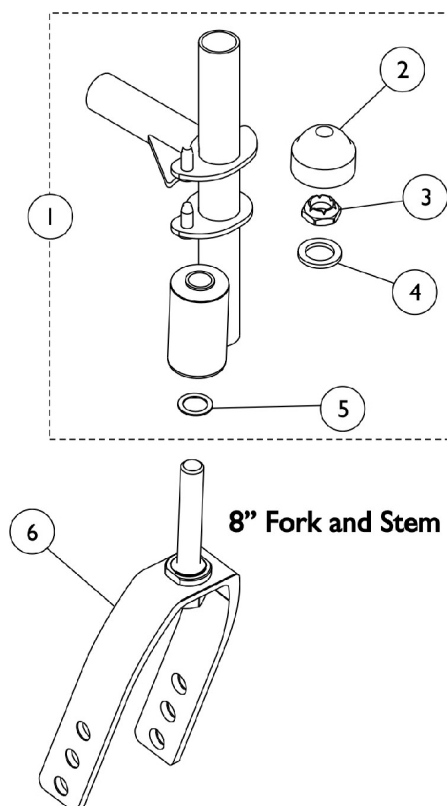
Conventional Fixed Height

NOTE: If your chair was built with a serial # starting with "03H" or "03I", please contact an Invacare Parts Specialist for replacement parts at 1-800-333-6900 Ext. 3722.

Item Number	Note	Part Number	Description	Quantity Per	
				Package	Assembly
12			Pad, Arm, Desk Length	1	1
13			Package, Screw Phillips Pan Head (#10-32 x 1-1/8")	1	2
	F,G	1117365	Kit, Clothing Guards - Desk Length w/ Screws & Decals	1	1
	F,G	1117366	Kit, Clothing Guards - Full Length w/ Screws & Decals	1	1
NOTE: A - Removable Arm. B - Includes 2-8, 14 and 15. C - Non-Removable Arm. D - Includes 2-7, 9-12, 14 and 15. E - Includes 14-15. F - Includes (1) each right and left clothing guard and attaching hardware. G - Not shown.					

Forks and Hardware

NOTE: If your chair was built with a serial # starting with "03H" or "03I", please contact an Invacare Parts Specialist for replacement parts at 1-800-333-6900 Ext. 3722.

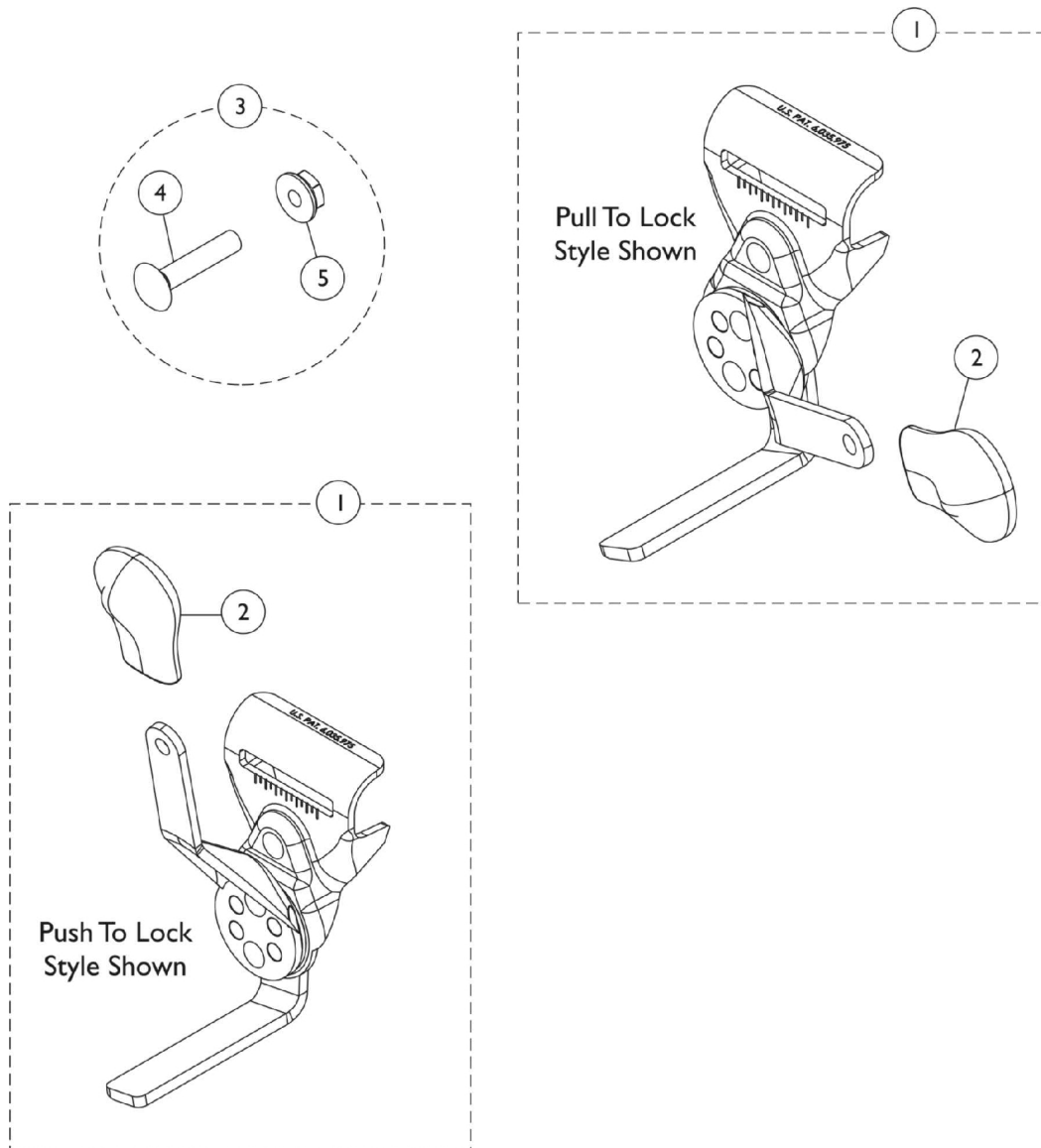


Item Number	Note	Part Number	Description	Quantity Per	
				Package	Assembly
1	A	1089104	Hardware, Fork	1	1
2		1001843	Cap, Head Tube, Black	1	2
3		1001979	Locknut (1/2-20)	1	2
4		1021508	Washer, Nylon (5/8 x 1 x 3/32")	1	2
5		1089102	Washer, Steel (17/32 x 3/4 x 1/32")	1	2
6	B	1089103	Fork and Stem, Aluminum, Black (8" Caster)	1	1
		1001801	Bearing, Flange (1/2")	1	1

NOTE: A - Includes Items 2-5, each with a quantity of 2.
B - Not Shown.

Wheel Lock

NOTE: If your chair was built with a serial # starting with "03H" or "03I", please contact an Invacare Parts Specialist for replacement parts at 1-800-333-6900 Ext. 3722.



Wheel Lock

NOTE: If your chair was built with a serial # starting with "03H" or "03I", please contact an Invacare Parts Specialist for replacement parts at 1-800-333-6900 Ext. 3722.

Item Number	Note	Part Number	Description	Quantity Per	
				Package	Assembly
1		1110225	Wheel Lock, Push to Lock - Right	1	1
1		1110226	Wheel Lock, Push to Lock - Left	1	1
1		1110227	Wheel Lock, Pull to Lock - Right	1	1
1		1110228	Wheel Lock, Pull to Lock - Left	1	1
2		1110160	Tip, Plastic Wheel Lock Handle, Black	1	1
3	A	1017677	Kit, Hardware, Wheel Lock (Pair)	1	1
4			Nut, Hex Flang (1/4-20)	1	2
5			Bolt, Carriage (1/4-20 x 2")	1	2
	B	1058900	Handle, Wheel Lock Extension, Black (8")	1	1

NOTE: A - Includes items 4 and 5 each with a quantity of 2.
B - Not shown.

Rear Wheels

NOTE: If your chair was built with a serial # starting with "03H" or "03I", please contact an Invacare Parts Specialist for replacement parts at 1-800-333-6900 Ext. 3722.

Model Number	Wheel Style	Single Wheel Assembly	Tire	Tube/Insert	Bearing	Bearing Spacer
U2222C	Composite Corded Urethane (24 x 1") 5/8" Axle (9-Spoke)	1121043 See Note(s) A	1118209	N/A	40117X006	1019695
5244BK	Composite Pneumatic w/Flat Free Insert (24 x 1-3/8") 5/8" Axle (7-Spoke)	1045281 See Note(s) B, A	40176X060	1045280	40117X006	1019695
U2244BK	Composite Urethane (24 x 1-1/4") 5/8" Axle (9-Spoke)	1034130 See Note(s) A	1026904	N/A	40117X006	1019695

NOTE: A - Includes Tire, Tube/Insert, Bearing and Spacer.
B - Required for 450lb weight capacity.

NOTE: Effective 3/27/06, the U222 wheel assembly is no longer available for this model.

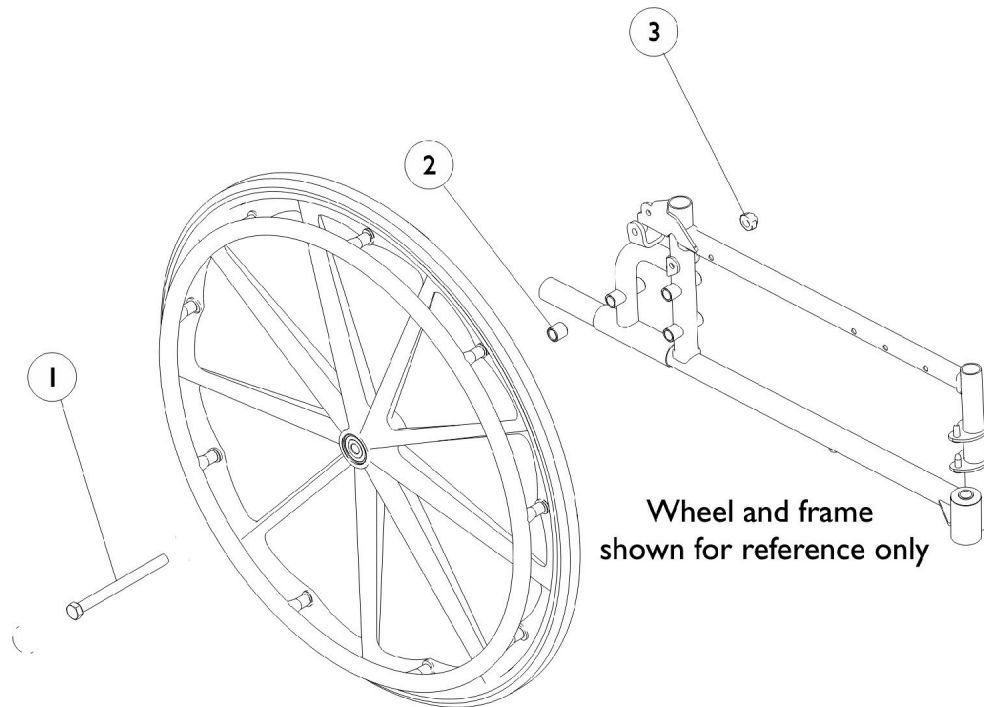
Wheel Conversion Kits

Part Number	Description	Quantity
1121459 See Note(s) A	Kit, 350Lb Wheel Package (T4)	1 Pair
1121460 See Note(s) B	Kit, 450Lb Wheel Package (T4)	1 Pair

NOTE: A - Kit contains 2 - U2222C Wheel assemblies with chrome handrims, 2 - AT903 Caster assemblies and a 350lb weight capacity decal.
B - Kit contains 2 - 5244BK Wheel assemblies with chrome handrims, 2 - 1228 Caster assemblies and a 450lb weight capacity decal.

Rear Wheel Hardware

NOTE: If your chair was built with a serial # starting with "03H" or "03I", please contact an Invacare Parts Specialist for replacement parts at 1-800-333-6900 Ext. 3722.



Item Number	Note	Part Number	Description	Quantity Per	
				Package	Assembly
1	A	47203X020	Axle (5/8-18 x 4-3/4")	1	1
2		47183X021	Spacer (5/8 x 7/8 x 3/4")	1	1
3		60030X000	Locknut (5/8-18)	1	1
		1034111	Wheel Hardware - Rear	1	1
NOTE: A - Includes items 1-3.					

Handrims & Attaching Hardware

NOTE: If your chair was built with a serial # starting with "03H" or "03I", please contact an Invacare Parts Specialist for replacement parts at 1-800-333-6900 Ext. 3722.

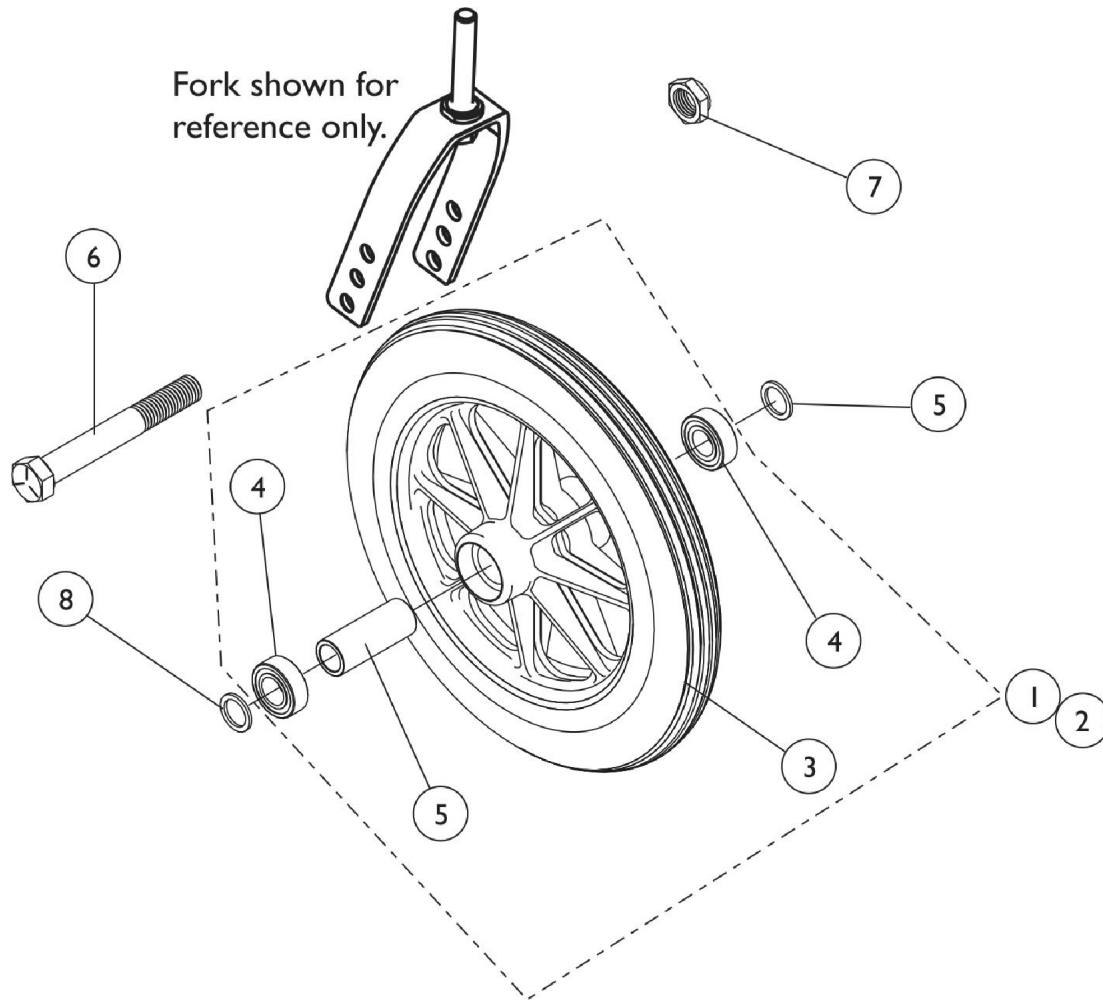
Non Projection Handrims & Attaching Hardware

Model Number	Chrome	Aluminum, Black	Attaching Hardware Kit
2222BK	1055272	N/A	1042074 See Note(s) A
5244BK	1054966	1119821	1025153 See Note(s) A
U2222	1055272	1120063	1042074 See Note(s) A
U2222C	1055272	1120063	1042074 See Note(s) A
U2244BK	1054966	1119821	1025153 See Note(s) A

NOTE: A - Hardware kit includes hardware for (1) handrim.

Casters and Hardware

NOTE: If your chair was built with a serial # starting with "03H" or "03I", please contact an Invacare Parts Specialist for replacement parts at 1-800-333-6900 Ext. 3722.



Casters and Hardware

NOTE: If your chair was built with a serial # starting with "03H" or "03I", please contact an Invacare Parts Specialist for replacement parts at 1-800-333-6900 Ext. 3722.

AT903, 1290 & 1228

Item Number	Description	AT903 Composite Urethane (8 x 1-1/4")	1290 Composite Charcoal Grey Solid Rubber (8 x 1")	1228 Composite Semi-Pneumatic (8 x 1-3/4")
1	Wheel Assembly - 1 piece	1058649 See Note(s) A	1086841 See Note(s) A	1070811 See Note(s) C, A
2	Wheel Assembly - 1 pair	N/A	1086842 See Note(s) B	1071666 See Note(s) B
3	Tire	1038157	1075458 See Note(s) D	N/A
4	Bearing	1040102	1006049	1006049
5	Hub Spacer	1020592	1018982	1020592
6	Front Axle	57667P007	57667P007	57667P007
7	Locknut, Axle	20225X000	20225X000	20225X000
8	Washer, Axle	N/A	1026101	1016032
NOTE: A - Includes Tire, Tube/Insert, Bearing and Spacer. B - Includes (2) Wheel Assemblies, (2) Front Axles, (2) Locknuts and (4) Axle Washers. C - Required for 450lb weight capacity chair. D - Due to change in color effective 1/14/05, it is recommended that you order tires in pairs.				

Calf Pads

NOTE: If your chair was built with a serial # starting with "03H" or "03I", please contact an Invacare Parts Specialist for replacement parts at 1-800-333-6900 Ext. 3722.

Part Number	Description	Quantity
8881091819 See Note(s) A	Legrest Pad with Hardware	1
1091800 See Note(s) A	Legrest Pad (Plastic) with Hardware	1
40163X008	Screw, Phillips Head (#10-32 x 1 1/16")	2
NOTE: A - Specify upholstery color when ordering. See Category titled "Upholstery Colors."		

Footrest and Legrest Accessories

NOTE: If your chair was built with a serial # starting with "03H" or "03I", please contact an Invacare Parts Specialist for replacement parts at 1-800-333-6900 Ext. 3722.

Extra Large Footplates

Part Number	Description - Xtra Large Footplates w/ Pivot Slide Tubes	Package Quantity
1110346	Footrests - Right	1
1110347	Footrests - Left	1
1110350	Legrests - Right	1
1110351	Legrests - Left	1
1035456	Articulating Legrests - Right	1
1035457	Articulating Legrests - Left	1

H-Strap & Calf Strap

Part Number	Description	Package Quantity
1032002	H-Strap - 18" Wide Chairs	1
1032001	H-Strap - 20-22" Wide Chairs	1
1068609	Heel Strap (22 - 24" Wide)	1
1121290	Calf Strap - 18" W	1
1102745	Calf Strap - 20" W	1
1102746	Calf Strap - 22" W	1
1102747	Calf Strap - 24" W	1

Footrest and Legrest Accessories

NOTE: If your chair was built with a serial # starting with "03H" or "03I", please contact an Invacare Parts Specialist for replacement parts at 1-800-333-6900 Ext. 3722.

Non-Removable Device

Part Number	Description	Package Quantity
1034206	Non-Removable Device	1 pair

Heel Loops

Part Number	Description	Package Quantity
1035917 See Note(s) A	Heel Loops, 16-24" Wide Chairs w/Composite Footplates	1 pair
1035929 See Note(s) A	Heel Loops w/ Ankle Straps, 16-24" Wide Chairs w/Aluminum Footplates	1 pair
1035918 See Note(s) A	Heel loops w/Ankle Straps, 16-24" W Chairs	1 pair
1035926 See Note(s) A	Attaching Hardware for Aluminum Footplates	1 pair
1035927 See Note(s) A	Attaching Hardware for Composite Footplates	1 pair

NOTE: A - Does not include hardware.

Front Riggings Quick Reference Chart

NOTE: If your chair was built with a serial # starting with "03H" or "03I", please contact an Invacare Parts Specialist for replacement parts at 1-800-333-6900 Ext. 3722.

Pivot Slide Tube with Footplate - Composite

T94HC, T94HCB, T93HC, T93HCB

Model Number	Chair Width	Pivot Slide Tube with Footplate Right	Pivot Slide Tube with Footplate Left
T93HC, T93HCB	18-24" W	1111291	1111292
T94HC, T94HCB	18-24" W	1110313	1110314

Bolt Through & Spring Button Kits

Style	Part Number	Quantity per Package	Quantity Per Footrest (pair)	Quantity Per Legrest (pair)
Spring Button Hardware Kit	1121272 See Note(s) A	2	2	4
Bolt Through Hardware Kit	1101776 See Note(s) A	2	2	2
Tool Kit	1058407 See Note(s) B	1	N/A	N/A

NOTE: A - Kit includes Hardware and Instruction Sheet.

B - Kit includes (2) Hex Keys and (2) Wrenches. The Bolt Thru Hardware Kit requires a Hex Key for installation.

Pivot Slide Tube with Extra Large Footplate - Aluminum

T94HA, T94HAB, T93HA, T93HAB

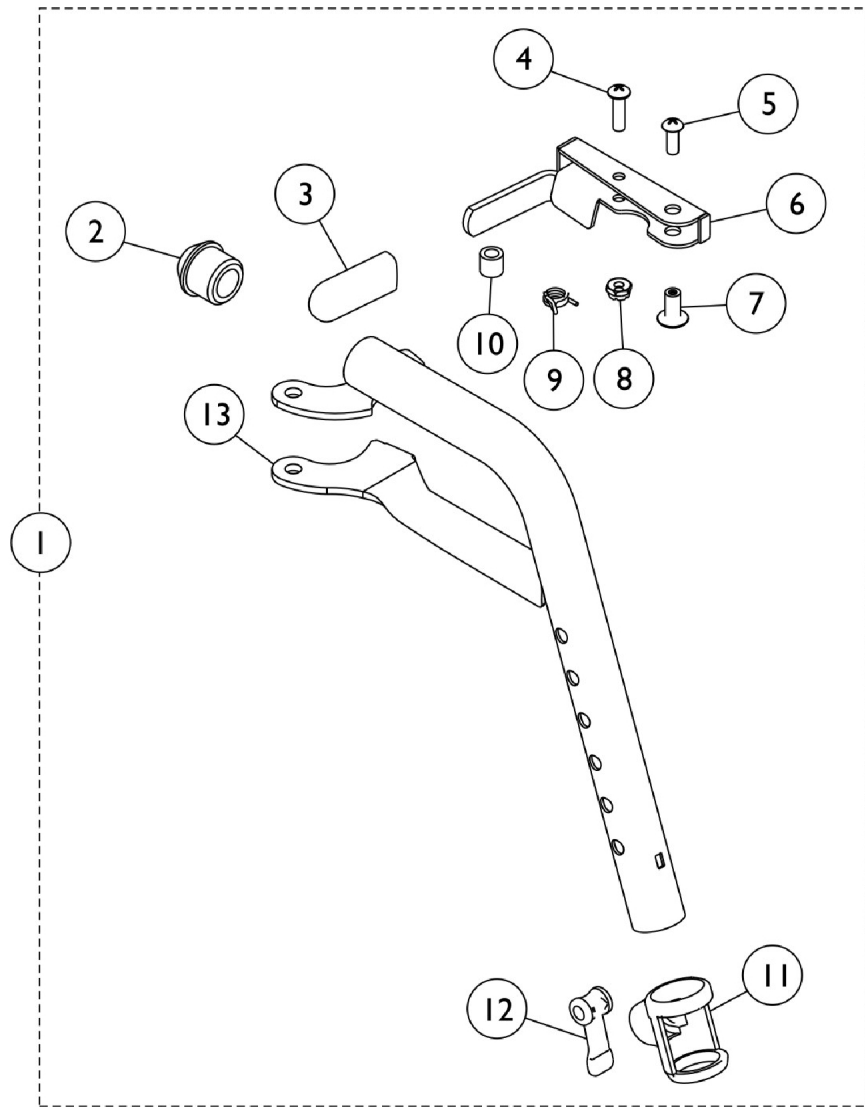
Model Number	Chair Width	Pivot Slide Tube with Footplate Right	Pivot Slide Tube with Footplate Left
T93HA, T93HAB	18"-24" W	1110346 See Note(s) A	1110347 See Note(s) A
T94HA, T94HAB	18"-24" W	1110350 See Note(s) A	1110351 See Note(s) A

NOTE: A - Spring buttons and bolt through hardware are not included in any pivot slide tube assemblies.

Footrest Support Assembly

T93HA, T93HAB, T93HC, T93HCB

NOTE: If your chair was built with a serial # starting with "03H" or "03I", please contact an Invacare Parts Specialist for replacement parts at 1-800-333-6900 Ext. 3722.



Footrest Support Assembly

T93HA, T93HAB, T93HC, T93HCB

NOTE: If your chair was built with a serial # starting with "03H" or "03I", please contact an Invacare Parts Specialist for replacement parts at 1-800-333-6900 Ext. 3722.

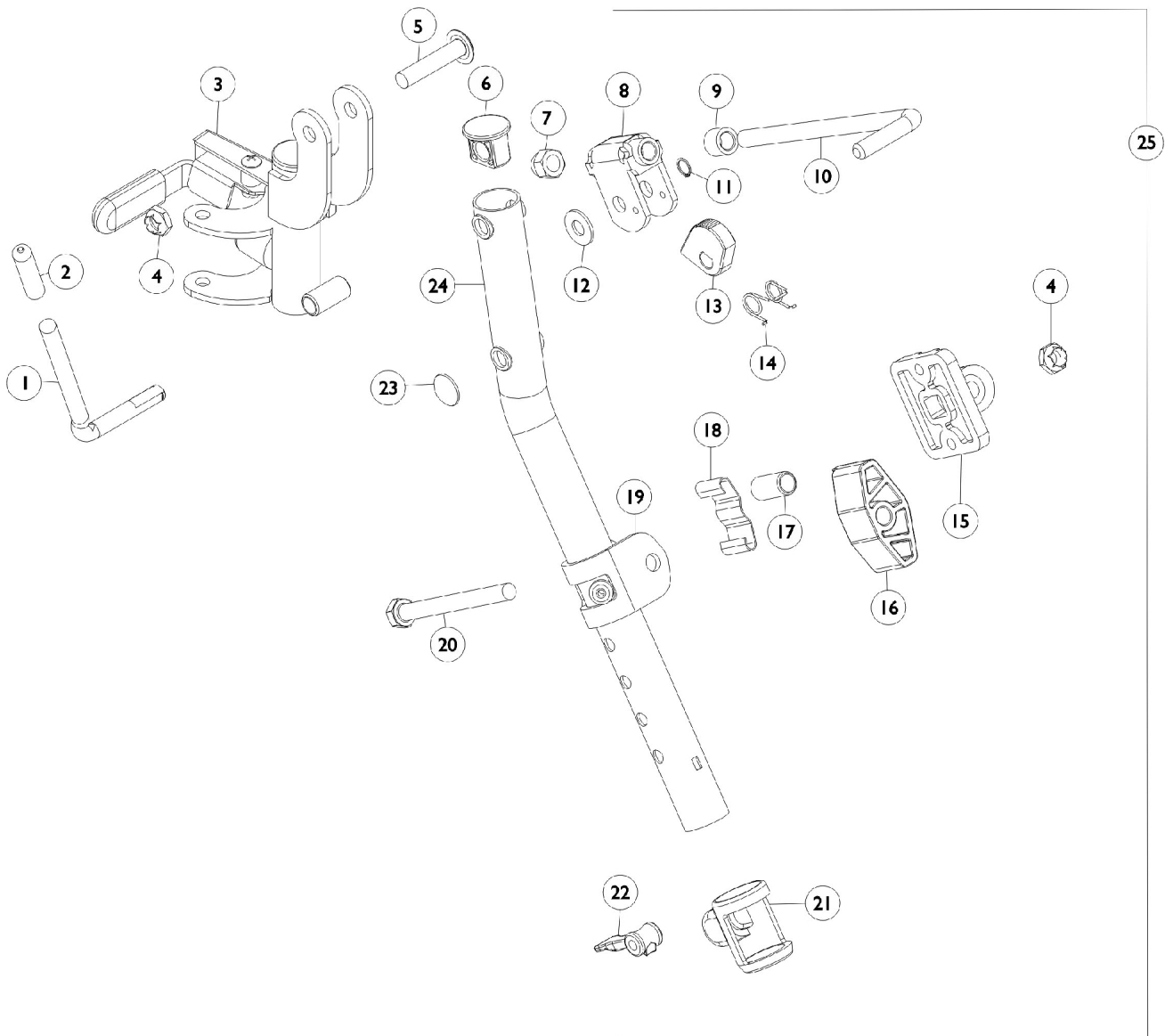
Item Number	Note	Part Number	Description	Quantity Per	
				Package	Assembly
1	A	1111274	Footrest Support Assembly, Hemi, Chrome - Right	1	1
1	A	1111275	Footrest Support Assembly, Hemi, Chrome - Left	1	1
2		1020719	Anti-Rattle, Black	1	1
3		1006490	Tip, Plastic, Black	1	1
4		40163X008	Screw, Phillips Pan Head (#10-32 x 11/16")	1	1
5		40163X002	Screw, Phillips Round Head (#10-32 x 1/2")	1	1
6		1110176	Handle, Release, Chrome - Right	1	1
6		1110177	Handle, Release, Chrome - Left	1	1
7		67005X000	Rivnut (#10-32)	1	1
8		60279X003	Locknut (#10-32)	1	1
9		1008935	Spring, Release - Right	1	1
9		1008936	Spring, Release - Left	1	1
10		47565X057	Bushing (7/32 x 3/8 x 11/32")	1	1
11		1048085	Housing, Cam	1	1
12		1048086	Lever, Cam, Black	1	1
13		1111270	Tube, Footrest Support, Hemi, Chrome - Right	1	1
13		1111271	Tube, Footrest Support, Hemi, Chrome - Left	1	1
	B	1101776	Kit, Bolt-Thru	2	1
	B	1121272	Kit, Spring Button	2	1

NOTE: A - Includes Items 2-13.
B - Not shown. The kit is needed to attach the Pivot Slide Tube into the upper support.

Legrest Support Assembly

T94HA, T94HAB, T94HC, T94HCB

NOTE: If your chair was built with a serial # starting with "03H" or "03I", please contact an Invacare Parts Specialist for replacement parts at 1-800-333-6900 Ext. 3722.



Legrest Support Assembly

T94HA, T94HAB, T94HC, T94HCB

NOTE: If your chair was built with a serial # starting with "03H" or "03I", please contact an Invacare Parts Specialist for replacement parts at 1-800-333-6900 Ext. 3722.

Item Number	Note	Part Number	Description	Quantity Per	
				Package	Assembly
1		1037126	Handle, Release	1	1
2		1040060	Tip, Plastic, Black	1	1
3		1110334	Legrest Support Tube Assembly, Hemi, Chrome - Right	1	1
3		1110335	Legrest Support Tube Assembly, Hemi, Chrome - Left	1	1
4		1107321	Nut, Low Cap (5/16"-24)	1	2
5		1030948	Screw, Slotted Truss Head (5/16-24 x 1-1/2")	1	1
6		1095433	Plug Button, Black (7/8")	1	1
7		10261X000	Nut, Acorn (5/16"-24)	1	1
8		04528X002	Bracket, Release, Chrome	1	1
9		47330X003	Spacer (5/16 x 1/2 x 3/8")	1	1
10		42326X001	Bar, Ratchet	1	1
11		1040831	Ring, Snap	1	1
12		1013519	Washer, Nylon (5/16 x 11/16 x 1/16")	1	1
13		1037125	Cam, Legrest	1	1
14		1037485	Spring, Release	1	1
15		04526X019	Plate, Legrest Pad	1	1
16		1091220	Spacer	1	1
17		47328X003	Bushing, Pivot (5/16 x 7/16 x 7/8")	1	1
18		48823X008	Spring, Leaf	1	1
19		1110208	Bracket, Calf Pad Mounting, Chrome	1	1
20		1014807	Screw, Hex Head (5/16-24 x 3-1/4")	1	1
21		1048085	Housing, Cam	1	1
22		1048086	Lever, Cam, Black	1	1
23		1096773	Nut, Push Dome (5/16")	1	1
24		1110165	Tube, Elevating Support, Chrome - Right	1	1
24		1110166	Tube, Elevating Support, Chrome - Left	1	1
25	A	1110338	Legrest Support Assembly, Hemi, Chrome - Right	1	1
25	A	1110339	Legrest Support Assembly, Hemi, Chrome - Left	1	1
25	A	1110336	Legrest Support Assembly, Hemi, Black - Right	1	1
25	A	1110337	Legrest Support Assembly, Hemi, Black - Left	1	1
	B	1121272	Kit, Spring Button	2	1
	B	1101776	Kit, Bolt-Thru	2	1

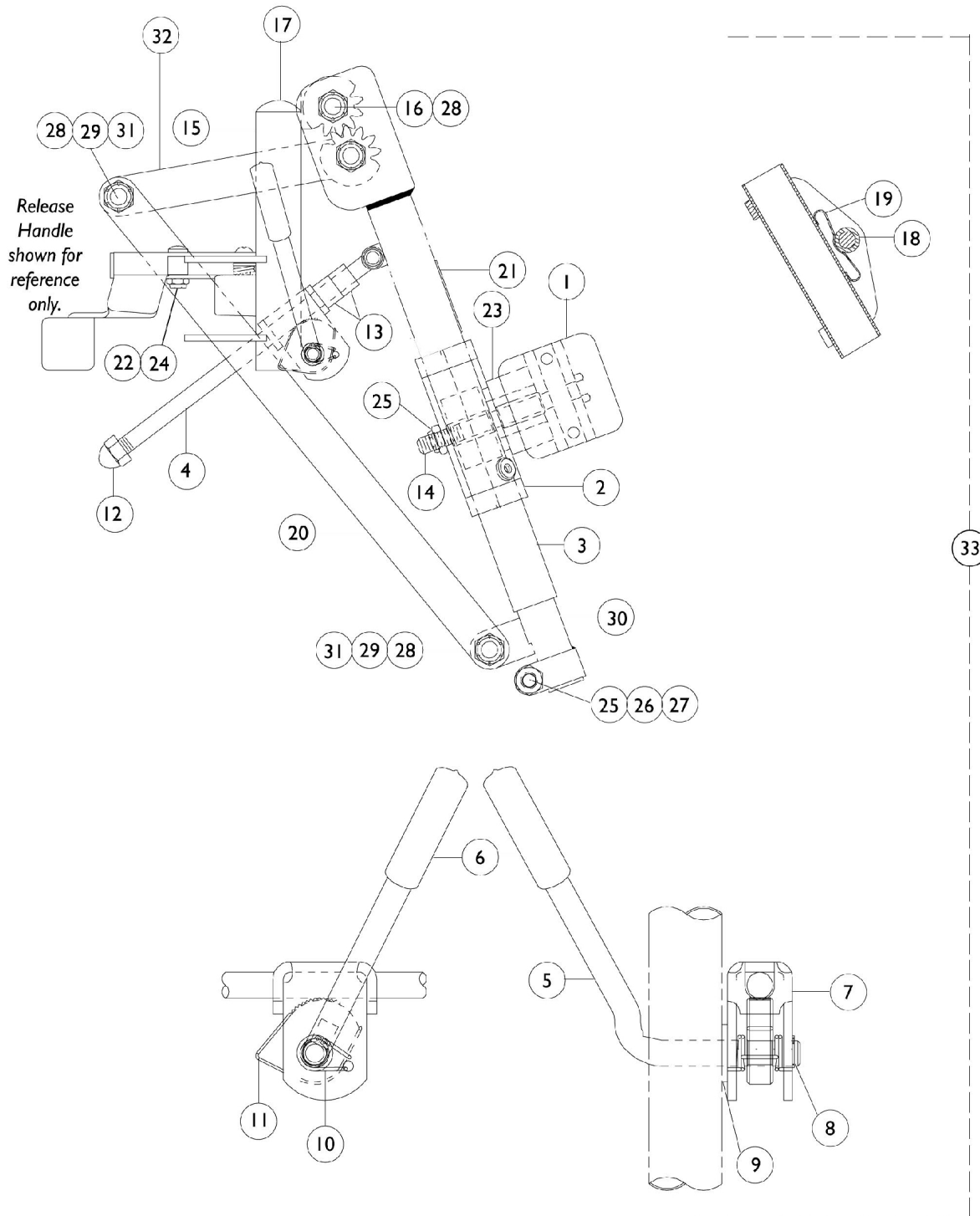
NOTE: A - Includes items 1-24.

B - Not shown. The kit is needed to attach the Pivot Slide Tube into the upper support.

Articulating Legrest Support

AHL4A / AHL4C

NOTE: If your chair was built with a serial # starting with "03H" or "03I", please contact an Invacare Parts Specialist for replacement parts at 1-800-333-6900 Ext. 3722.



Articulating Legrest Support

AHL4A / AHL4C

NOTE: If your chair was built with a serial # starting with "03H" or "03I", please contact an Invacare Parts Specialist for replacement parts at 1-800-333-6900 Ext. 3722.

Item Number	Note	Part Number	Description	Quantity Per	
				Package	Assembly
1		04526X019	Plate, Legrest Pad	1	1
2		1025104	Bracket, Legrest, Chrome	1	1
3		1022877	Tube, Support and Drive Link, Chrome - Right	1	1
3		1022878	Tube, Support and Drive Link, Chrome - Left	1	1
4		42326X004	Bar, Ratchet - Right/Left	1	1
5		1037126	Handle, Release	1	1
6		1040060	Tip, Plastic, Black	1	1
7		04528X002	Bracket, Release, Chrome	1	1
8		1040831	Ring, Snap	1	1
9		7930310	Washer, Nylon (5/16 x 11/16 x 1/16")	25	1
10		1037485	Spring, Release	1	2
11		1037125	Cam, Legrest	1	1
12		7930336	Nut, Acorn (5/16-24)	25	1
13		47330X003	Spacer (5/16 x 1/2 x 3/8")	1	1
14		1014807	Screw, Hex Head (5/16-24 x 3-1/4")	1	1
15		1023092	Legrest Support Tube Assembly, Hemi, Chrome - Right	1	1
15		1023093	Legrest Support Tube Assembly, Hemi, Chrome - Left	1	1
16		1022854	Screw, Shoulder Slotted Head (1/2 x 1-1/8", 3/8-16)	1	1
17		1027097	Plug Button, Black (3/4")	1	1
18		47328X003	Bushing, Pivot (5/16 x 7/16 x 7/8")	1	1
19		48823X008	Spring, Leaf	1	1
20		1022846	Bar, Link, Chrome	1	1
21		1024911	Decal, Smartleg	1	1
22		1030979	Screw, Phillips Pan Head Tap (#10-32 x 3/4")	1	1
23		1091220	Spacer	1	1
24		1022874	Bumper	1	1
25		7930363	Package, Locknut (5/16"-24)	25	2
26		11232X009	Bolt, Lug (5/16-24 x 1-3/8")	1	1
27		1027377	Washer (#20)	1	1
28		40363X000	Hex Nut (3/8"-16)	1	3
29		1022866	Screw, Socket Button Head (3/8-16 x 3/4")	1	2
30		1022848	Tube, Slide, Articulating, Chrome - Right	1	1
30		1022849	Tube, Slide, Articulating, Chrome - Left	1	1
31		1049527	Washer, Nylon (3/8 x 3/4 x 1/16")	1	2
32		1022864	Drive, Link	1	1
33	A	1041799	Legrest Support Assembly, Articulating, Hemi, Chrome - Right	1	1
33	A	1041800	Legrest Support Assembly, Articulating, Hemi, Chrome - Left	1	1
	B,C	1046329	Kit, Elevating Legrest Ratchet Hardware (Pair)	2	1

Articulating Legrest Support

AHL4A / AHL4C

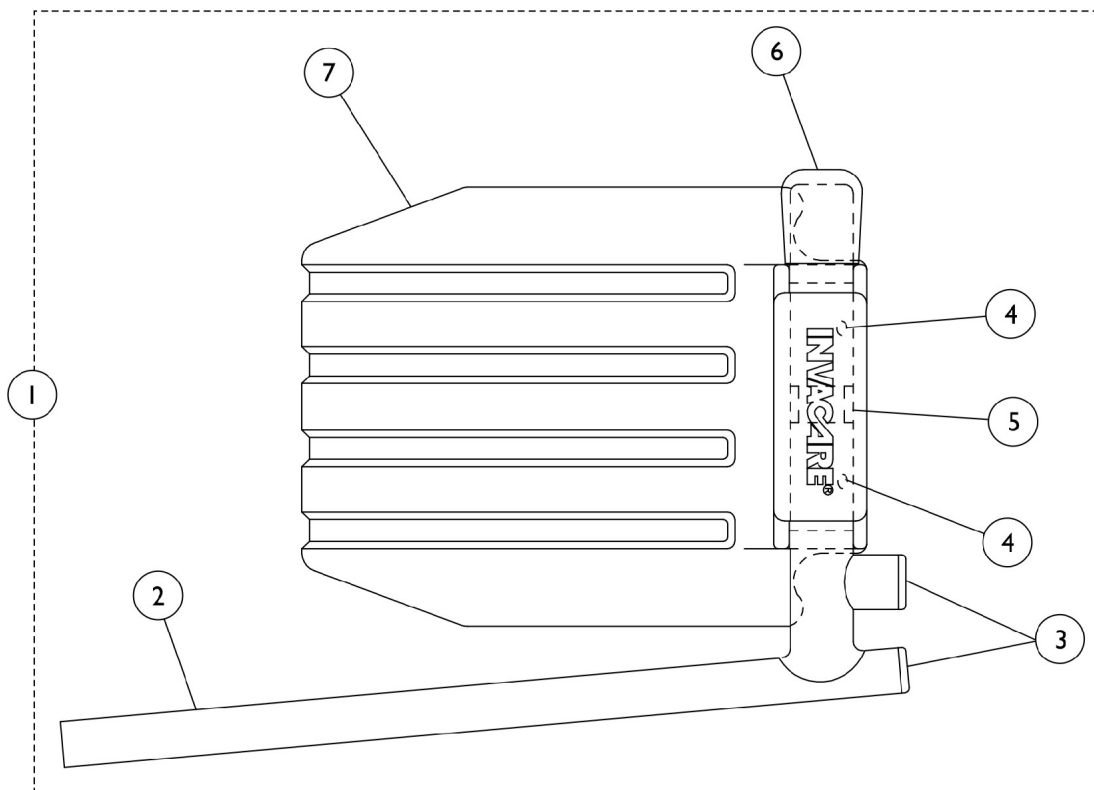
NOTE: If your chair was built with a serial # starting with "03H" or "03I", please contact an Invacare Parts Specialist for replacement parts at 1-800-333-6900 Ext. 3722.

NOTE: A - Includes Items 1-32.
B - Includes Items 4-13.
C - Not Shown.

Pivot Slide Tube with Footplate

AHL4A/C Legrests

NOTE: If your chair was built with a serial # starting with "03H" or "03I", please contact an Invacare Parts Specialist for replacement parts at 1-800-333-6900 Ext. 3722.



Pivot Slide Tube with Footplate

AHL4A/C Legrests

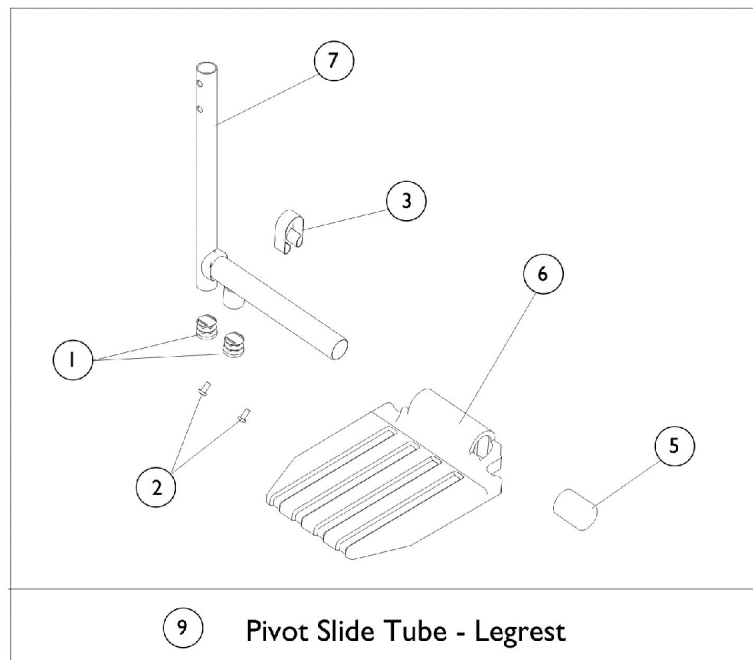
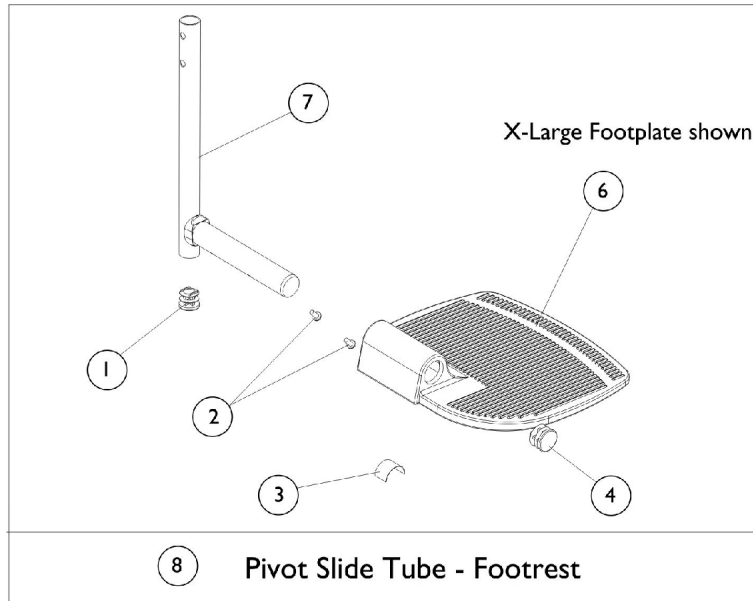
NOTE: If your chair was built with a serial # starting with "03H" or "03I", please contact an Invacare Parts Specialist for replacement parts at 1-800-333-6900 Ext. 3722.

Item Number	Note	Part Number	Description	Quantity Per	
				Package	Assembly
1		1023907	Pivot/Slide Tube Assembly w/ Aluminum Footplate, Chrome - Right	1	1
1		1023908	Pivot/Slide Tube Assembly w/Aluminum Footplate, Chrome - Left	1	1
2		7500085-NLA	Pivot/Slide Tube w/ Plug Button, Chrome	1	1
2		1041526	Pivot/Slide Tube w/ Plug Button Assembly, Steel, Chrome	1	2
3		1027097	Plug Button, Black (3/4")	1	2
3		1018133	Plug Button, Black (5/8")	1	1
4		40120X001	Screw, Phillips Pan Head (#8-32 x 3/8")	1	1
5		1006981	Spring, Leaf	1	1
6		1016346	Cap, End, Tube, Black (7/8")	1	1
7		1015178	Footplate, Composite, Black (6" W x 7-53/64" L)	1	1
7	A	44200X059	Footplate, Aluminum, Small, Black (6-3/4" W x 6" L)	1	1
7	A	44200X027	Footplate, Aluminum, Medium, Black (7-3/4" W x 6" L)	1	1
7	A	44200X025	Footplate, Aluminum, Extra Large, Black - Right (8" W x 8-1/2" L)	1	1
7	A	44200X026	Footplate, Aluminum, Extra Large, Black - Left (8" W x 8-1/2" L)	1	1
NOTE: A - Aluminum footplates on chairs built before 2/96 had a "Ball Burnish" finish. Footplates after 1/96 now have a black finish. When replacing one ball burnish footplate it is suggested that you order two new (black) footplates.					

Pivot Slide Tube with Footplate

T93HA, T94HA, T93HAB, T94HAB

NOTE: If your chair was built with a serial # starting with "03H" or "03I", please contact an Invacare Parts Specialist for replacement parts at 1-800-333-6900 Ext. 3722.



Pivot Slide Tube with Footplate

T93HA, T94HA, T93HAB, T94HAB

NOTE: If your chair was built with a serial # starting with "03H" or "03I", please contact an Invacare Parts Specialist for replacement parts at 1-800-333-6900 Ext. 3722.

Item Number	Note	Part Number	Description	Quantity Per	
				Package	Assembly
8	A	1111287	Pivot Slide Tube Assembly with Aluminum Footplate, Chrome - Right	1	1
1			Plug Button, Black (3/4")	1	1
2			Screw, Phillips Pan Head (#8-32 x 3/8")	1	2
3			Spring, Leaf	1	1
5			Cap, End, Tube, Black (7/8")	1	1
6			Footplate, Aluminum, Medium, Black (7-3/4" W x 6" L)	1	1
7			Tube, Pivot/Slide, Footrest, Chrome	1	1
8	A	1111288	Pivot Slide Tube Assembly with Aluminum Footplate, Chrome - Left	1	1
1			Plug Button, Black (3/4")	1	1
2			Screw, Phillips Pan Head (#8-32 x 3/8")	1	2
3			Spring, Leaf	1	1
5			Cap, End, Tube, Black (7/8")	1	1
6			Footplate, Aluminum, Medium, Black (7-3/4" W x 6" L)	1	1
7			Tube, Pivot/Slide, Footrest, Chrome	1	1
8	A	1111291	Pivot Slide Tube Assembly with Composite Footplate, Chrome - Right	1	1
1			Plug Button, Black (3/4")	1	1
2			Screw, Phillips Pan Head (#8-32 x 3/8")	1	2
3			Spring, Leaf	1	1
5			Cap, End, Tube, Black (7/8")	1	1
6			Footplate, Composite, Black (6" W x 7-53/64" L)	1	1
7			Tube, Pivot/Slide, Footrest, Chrome	1	1
8	A	1111292	Pivot Slide Tube Assembly with Composite Footplate, Chrome - Left	1	1
1			Plug Button, Black (3/4")	1	1
2			Screw, Phillips Pan Head (#8-32 x 3/8")	1	2
3			Spring, Leaf	1	1
5			Cap, End, Tube, Black (7/8")	1	1
6			Footplate, Composite, Black (6" W x 7-53/64" L)	1	1
7			Tube, Pivot/Slide, Footrest, Chrome	1	1
8	B	1110346	Pivot Slide Tube Assembly with Extra Large Footplate, Chrome - Right	1	1
1			Plug Button, Black (3/4")	1	1
2			Screw, Phillips Pan Head (#8-32 x 3/8")	1	2
4			Plug Button, Black (7/8")	1	1
5			Spring, Leaf	1	1
6			Footplate, Aluminum, Extra Large, Black - Right (8" W x 8-1/2" L)	1	1
7			Tube, Pivot/Slide, Footrest, Chrome	1	1

Pivot Slide Tube with Footplate

T93HA, T94HA, T93HAB, T94HAB

NOTE: If your chair was built with a serial # starting with "03H" or "03I", please contact an Invacare Parts Specialist for replacement parts at 1-800-333-6900 Ext. 3722.

Item Number	Note	Part Number	Description	Quantity Per	
				Package	Assembly
8	B	1110347	Pivot Slide Tube Assembly with Extra Large Footplate, Chrome - Left	1	1
1			Plug Button, Black (3/4")	1	1
2			Screw, Phillips Pan Head (#8-32 x 3/8")	1	2
4			Plug Button, Black (7/8")	1	1
5			Spring, Leaf	1	1
6			Footplate, Aluminum, Extra Large, Black - Right (8" W x 8-1/2" L)	1	1
7			Tube, Pivot/Slide, Footrest, Chrome	1	1
8	C	1110350	Pivot Slide Tube Assembly with Extra Large Footplate, Chrome - Right	1	1
1			Plug Button, Black (3/4")	1	2
2			Screw, Phillips Pan Head (#8-32 x 3/8")	1	2
3			Spring, Leaf	1	1
4			Plug Button, Black (7/8")	1	1
6			Footplate, Aluminum, Extra Large, Black - Right (8" W x 8-1/2" L)	1	1
7			Tube, Pivot/Slide, Legrest, Chrome	1	1
8	C	1110351	Pivot Slide Tube Assembly with Extra Large Footplate, Chrome - Left	1	1
1			Plug Button, Black (3/4")	1	2
2			Screw, Phillips Pan Head (#8-32 x 3/8")	1	2
3			Spring, Leaf	1	1
4			Plug Button, Black (7/8")	1	1
6			Footplate, Aluminum, Extra Large, Black - Left (8" W x 8-1/2" L)	1	1
7			Tube, Pivot/Slide, Legrest, Chrome	1	1
9	A	1110313	Pivot Slide Tube Assembly with Composite Footplate, Chrome - Right	1	1
1			Plug Button, Black (3/4")	1	2
2			Screw, Phillips Pan Head (#8-32 x 3/8")	1	2
3			Spring, Leaf	1	1
5			Cap, End, Tube, Black (7/8")	1	1
6			Footplate, Composite, Black (6" W x 7-53/64" L)	1	1
7			Tube, Pivot/Slide, Legrest, Chrome	1	1
9	A	1110314	Pivot Slide Tube Assembly with Composite Footplate, Chrome - Left	1	1
1			Plug Button, Black (3/4")	1	2
2			Screw, Phillips Pan Head (#8-32 x 3/8")	1	2
3			Spring, Leaf	1	1
5			Cap, End, Tube, Black (7/8")	1	1
6			Footplate, Composite, Black (6" W x 7-53/64" L)	1	1
7			Tube, Pivot/Slide, Legrest, Chrome	1	1

Pivot Slide Tube with Footplate

T93HA, T94HA, T93HAB, T94HAB

NOTE: If your chair was built with a serial # starting with "03H" or "03I", please contact an Invacare Parts Specialist for replacement parts at 1-800-333-6900 Ext. 3722.

Item Number	Note	Part Number	Description	Quantity Per	
				Package	Assembly
9	A	1110317	Pivot Slide Tube Assembly with Aluminum Footplate, Chrome - Right	1	1
1			Plug Button, Black (3/4")	1	2
2			Screw, Phillips Pan Head (#8-32 x 3/8")	1	2
3			Spring, Leaf	1	1
5			Cap, End, Tube, Black (7/8")	1	1
6			Footplate, Aluminum, Medium, Black (7-3/4" W x 6" L)	1	1
7			Tube, Pivot/Slide, Legrest, Chrome	1	1
9	A	1110318	Pivot Slide Tube Assembly with Aluminum Footplate, Chrome - Left	1	1
1			Plug Button, Black (3/4")	1	2
2			Screw, Phillips Pan Head (#8-32 x 3/8")	1	2
3			Spring, Leaf	1	1
5			Cap, End, Tube, Black (7/8")	1	1
6			Footplate, Aluminum, Medium, Black (7-3/4" W x 6" L)	1	1
7			Tube, Pivot/Slide, Legrest, Chrome	1	1
	D	1121271	Package, Torsion Spring w/ Button	1	1
	D	1110266	Hardware, Bolt Through	1	1
NOTE: A - Includes items 1-3 and 5-7. B - Includes items 1, 2 and 4-7. C - Includes items 1-4, 6 and 7. D - Not Shown. Needed to attach the pivot slide tube into the upper support.					

Miscellaneous Accessories

NOTE: If your chair was built with a serial # starting with "03H" or "03I", please contact an Invacare Parts Specialist for replacement parts at 1-800-333-6900 Ext. 3722.

Carrying Pocket

18" Wide Chair	20" Wide Chair	22" Wide Chair	24" Wide Chair
1041603	8881047957	8881047960	8881121291
See Note(s) B, A	See Note(s) A	See Note(s) A	See Note(s) A
NOTE: A - Specify upholstery color when ordering. See category titled, "Upholstery Colors." B - This Carry pocket comes in U92 only.			

Carrying Straps

Part Number	Description	Quantity
8881091731	Carrying Strap	1

Crutch & Cane Carrier

Part Number	Description	Quantity
1034204	Crutch & Cane Carrier	1

Non-Folding Device

Part Number	Description	Quantity
1143048	Device, Non-Folding (14-24" W)	1

Miscellaneous Accessories

NOTE: If your chair was built with a serial # starting with "03H" or "03I", please contact an Invacare Parts Specialist for replacement parts at 1-800-333-6900 Ext. 3722.

OverHead Anti-Theft Device

Part Number	Description	Quantity
1037080	OverHead Anti-Theft Device Available on 16-18" Wide Chairs	1
1121288	Single Pole Anti-Theft Device (18-24"W)	1

Seat/Chest Positioning Strap

Buckle Style	18" Wide Chair	20-22" Wide Chair	24" Wide Chair
Auto	1004310	1034625	1034622
Hook and Loop	1034744	1034745	1034746

Anti-Tipper

Part Description	Part Number
Adjustable Rear Anti-Tipper for 8" Casters - Pair	1058836
Anti-Rattle (1")	15680X013

Seat Accessories

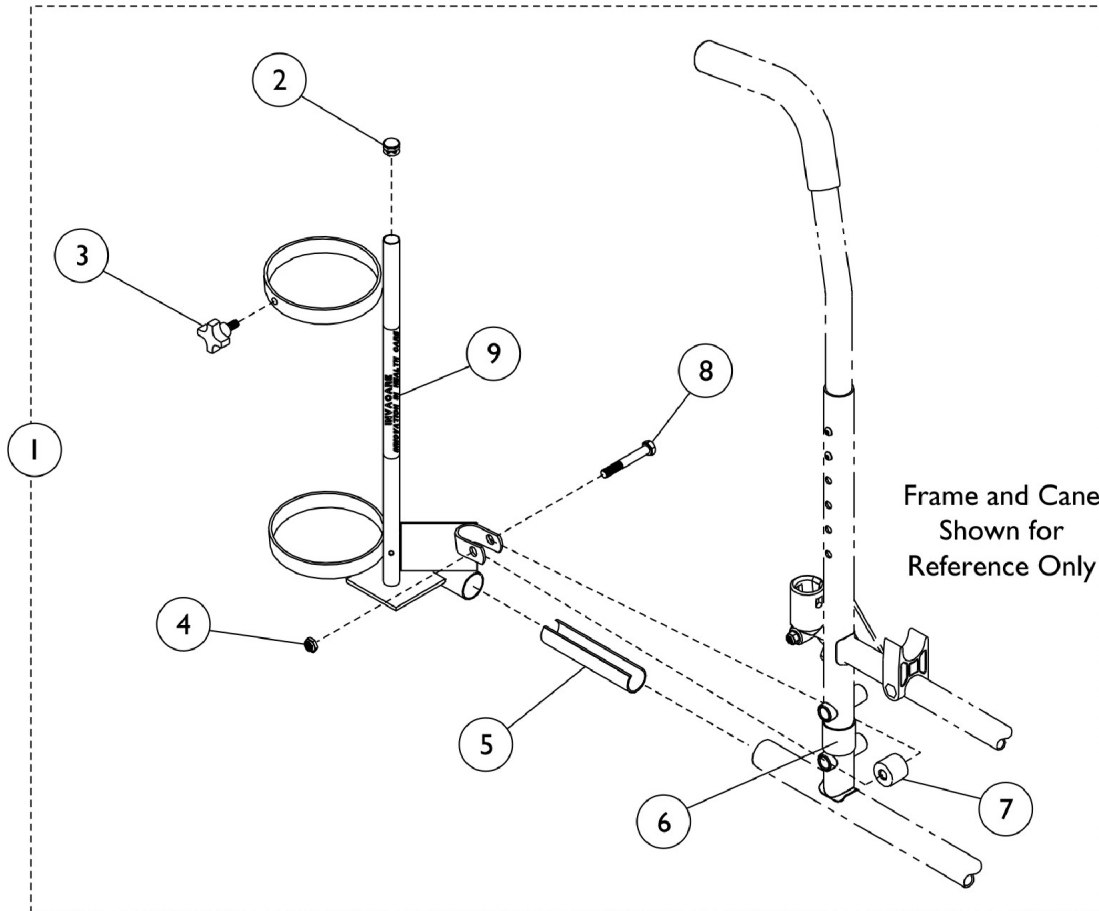
NOTE: If your chair was built with a serial # starting with "03H" or "03I", please contact an Invacare Parts Specialist for replacement parts at 1-800-333-6900 Ext. 3722.

Solid Seat Insert

Part Number	Chair Width X Depth
8881034668 See Note(s) A	18" W x 18" D
8881034686 See Note(s) A	18" W x 20" D
8881102882 See Note(s) A	20" W x 18" D
8881102172 See Note(s) A	20" W x 20" D
8881102883 See Note(s) A	22" W x 18" D
8881102173 See Note(s) A	22" W x 20" D
8881102168 See Note(s) A	24" W x 18" D
8881102174 See Note(s) A	24" W x 20" D
NOTE: A - Available in black only.	

Oxygen Holder - 1497

NOTE: If your chair was built with a serial # starting with "03H" or "03I", please contact an Invacare Parts Specialist for replacement parts at 1-800-333-6900 Ext. 3722.



Oxygen Holder - 1497

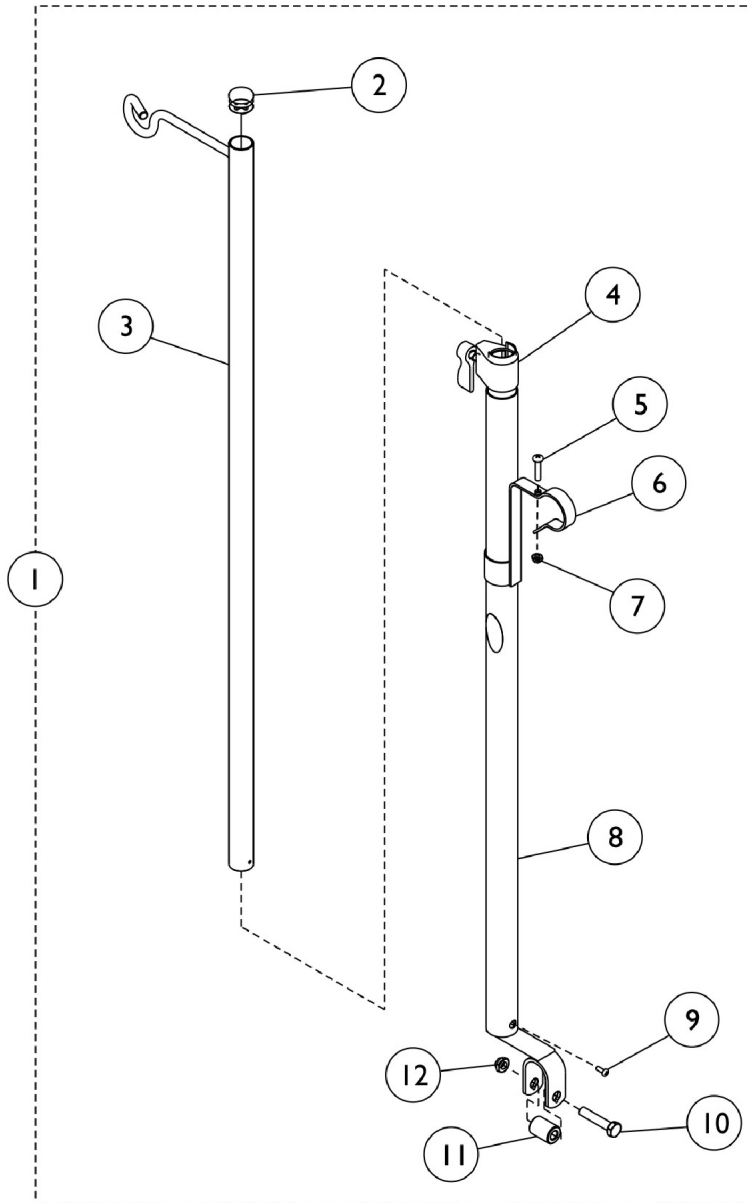
NOTE: If your chair was built with a serial # starting with "03H" or "03I", please contact an Invacare Parts Specialist for replacement parts at 1-800-333-6900 Ext. 3722.

Item Number	Note	Part Number	Description	Quantity Per	
				Package	Assembly
1	A	1070901	Holder, Oxygen	1	1
2		1017672	Plug Button, Grey (1/2")	1	1
3		1027683	Knob, Adjustment, Black	1	1
3		1027684	Knob, Clamping, Black	1	1
4		7930363	Package, Locknut (5/16"-24)	25	1
5		1023560	Tube, Insert Guide (3-3/4")	1	1
6		1023618	Tube, Guide, Black	1	1
7		1102577	Spacer (5/16 x 11/16 x 15/16")	1	1
8	B	11239X000	Screw, Hex Head (5/16-24 x 1-3/4")	1	1
9		1070900-NLA	Base, Oxygen Holder	1	1
		1095497	Decal, Invacare Logo (1.6)	1	1
	B	1027930	Instruction Sheet, Oxygen Holder	1	1

NOTE: A - Includes Items 2-9.
B - Not Shown

I.V. Rod and Bracket (2218)

NOTE: If your chair was built with a serial # starting with "03H" or "03I", please contact an Invacare Parts Specialist for replacement parts at 1-800-333-6900 Ext. 3722.

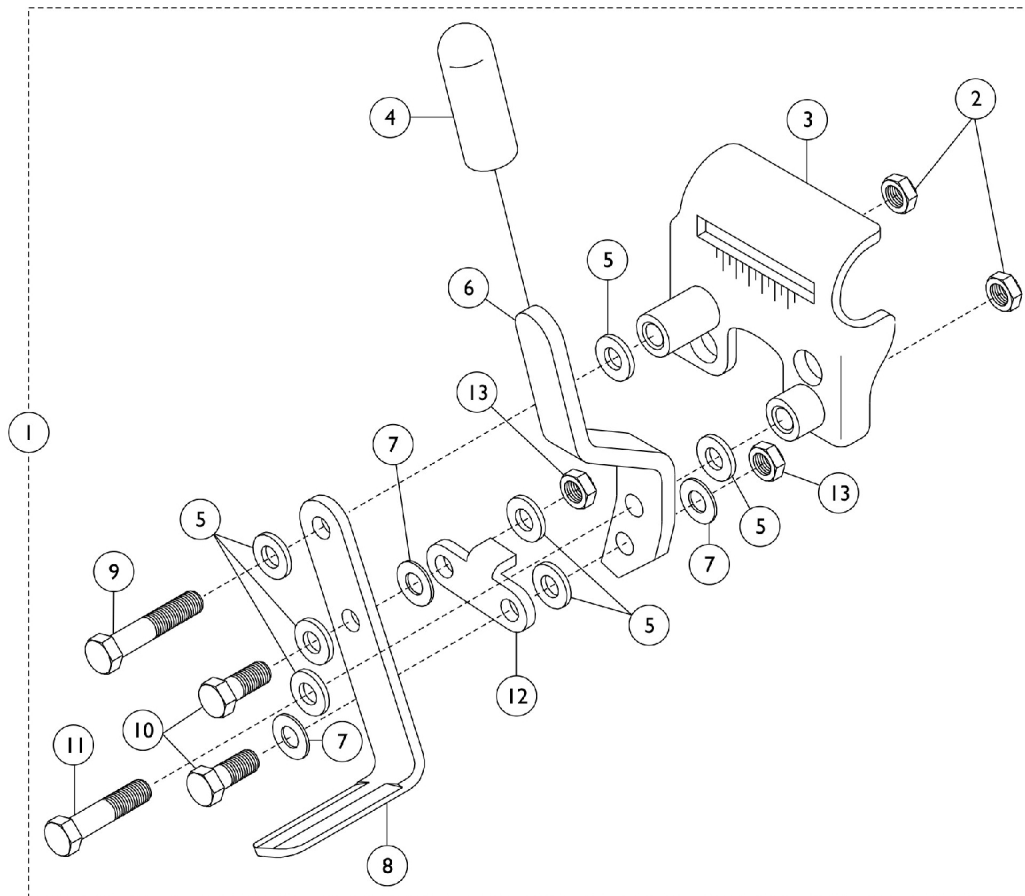


I.V. Rod and Bracket (2218)

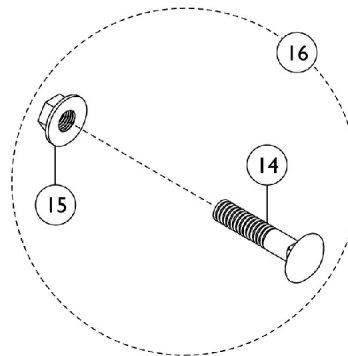
NOTE: If your chair was built with a serial # starting with "03H" or "03I", please contact an Invacare Parts Specialist for replacement parts at 1-800-333-6900 Ext. 3722.

Item Number	Note	Part Number	Description	Quantity Per	
				Package	Assembly
1		1101760	Rod, I.V., Telescoping (Model 2218)	1	1
2		1027095	Plug Button, Black (7/8")	1	1
3		04701X028	Rod, I.V.	1	1
4		12592X000	Adjustment Lock Assembly, Chrome	1	1
5		16718X000	Screw, Phillips Pan Head (#10-32 x 7/8")	1	1
6		1020082	Bracket, Mounting, Chrome	1	1
7		60279X003	Locknut (#10-32)	1	1
8		1017623	Socket, I.V.	1	1
9		21243X000	Screw, Phillips Pan Head (#6-20 x 3/8")	1	1
10		11239X001	Screw, Hex Head (5/16-24 x 1-1/2")	1	1
11		1017843	Spacer, Chrome (5/16 x 11/16 x 15/16")	1	1
12		60264X001	Locknut (5/16-24)	1	1
	A	1023618	Tube, Guide, Black	1	1
	A	1114827	Instruction Sheet	1	1
NOTE: A - Not Shown.					

Wheel Locks - Push to Lock - After 4/15/07



Attaching Hardware

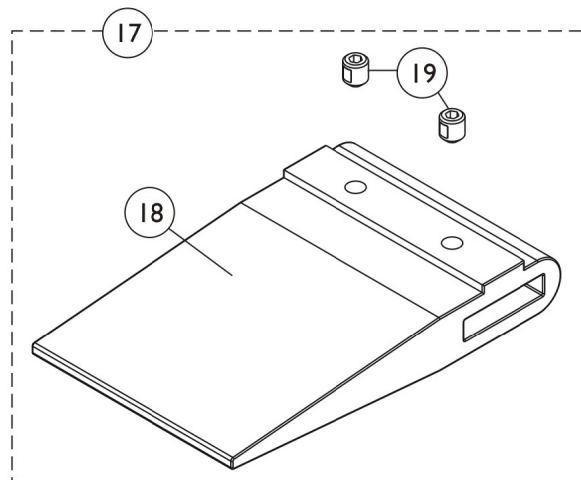
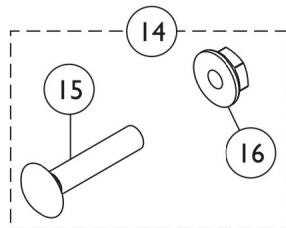
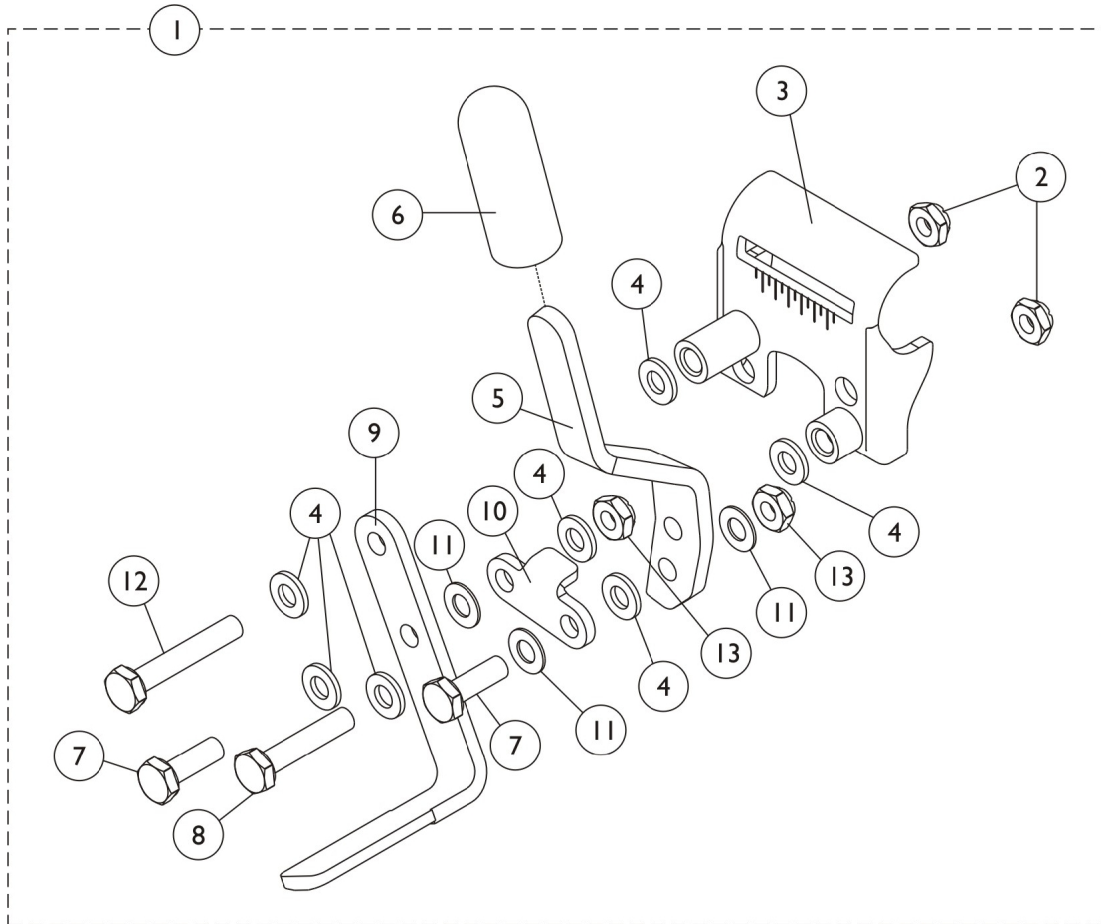


Wheel Locks - Push to Lock - After 4/15/07

Item Number	Note	Part Number	Description	Quantity Per	
				Package	Assembly
1	A	1101452	Wheel Lock Assembly, Push / Lock (Black) - Right	1	1
1	A	1101453	Wheel Lock Assembly, Push / Lock (Black) - Left	1	1
2		1025195	Locknut (1/4-20)	1	1
3		1053284	Bracket, Mounting, Black - Right	1	1
3		1053285	Bracket, Mounting, Black - Left	1	1
4		47376X024	Tip, Rubber Wheel Lock Handle, Black	1	1
5		1026033	Washer, Nylon (1/4 x 1/2 x 1/16")	1	7
6		1102134	Handle, Push/ Lock, Black - Right	1	1
6		1102135	Handle, Push/ Lock, Black - Left	1	1
7		1026103	Washer, Nylon (1/4 x 1/2 x 1/32")	1	3
8		1102133	Shoe, Wheel Lock	1	1
9		1030949	Screw, Hex Head (1/4-20 x 1-1/2")	1	1
10		1028687	Screw, Hex Head (1/4-28 x 3/4")	1	2
11		1021406	Screw, Hex Head (1/4-20 x 1-1/4")	1	1
12		1102132	Link, Black	1	1
13		1025765	Locknut (1/4-28)	1	1
14		1021402	Bolt, Carriage (1/4-20 x 2")	1	2
15		1021403	Nut, Hex Flang (1/4-20)	1	1
16	B	1017677	Kit, Hardware, Wheel Lock (Pair)	1	1
			Bolt, Carriage (1/4-20 x 2")	1	2
			Nut, Hex Flang (1/4-20)	1	2
	C,D	00078X021	Instruction Sheet	1	1
	D	1058899	Handle, Wheel Lock Extension, Black (6")	1	1
NOTE: A - Includes Items 2-13. B - Includes Items 14-15. C - Includes: Handles, Tips, Cords, and Washers. D - Not shown.					

Wheel Lock - Removable and Flip Back Arms - Push and Pull to Lock

NOTE: Due to the possibility of various manufacturing dates for Tracer IV Wheelchairs built with a serial # starting with "03H" or "03I", replacement parts will need to be ordered thru an Invacare Parts Specialist at 1-800-333-6900.



Wheel Lock - Removable and Flip Back Arms - Push and Pull to Lock

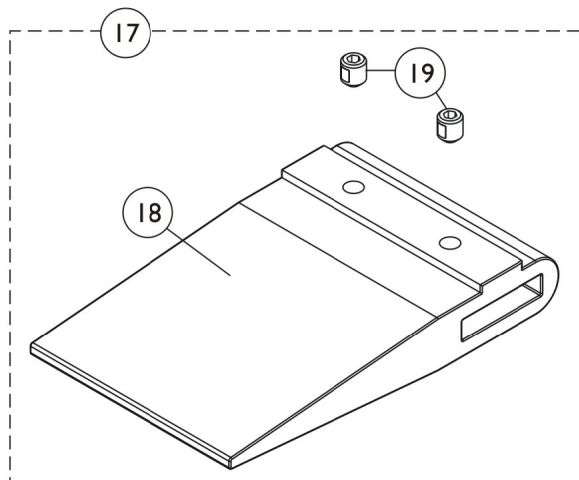
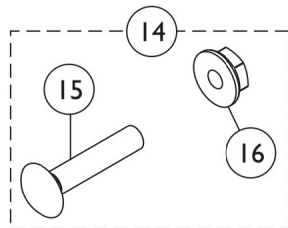
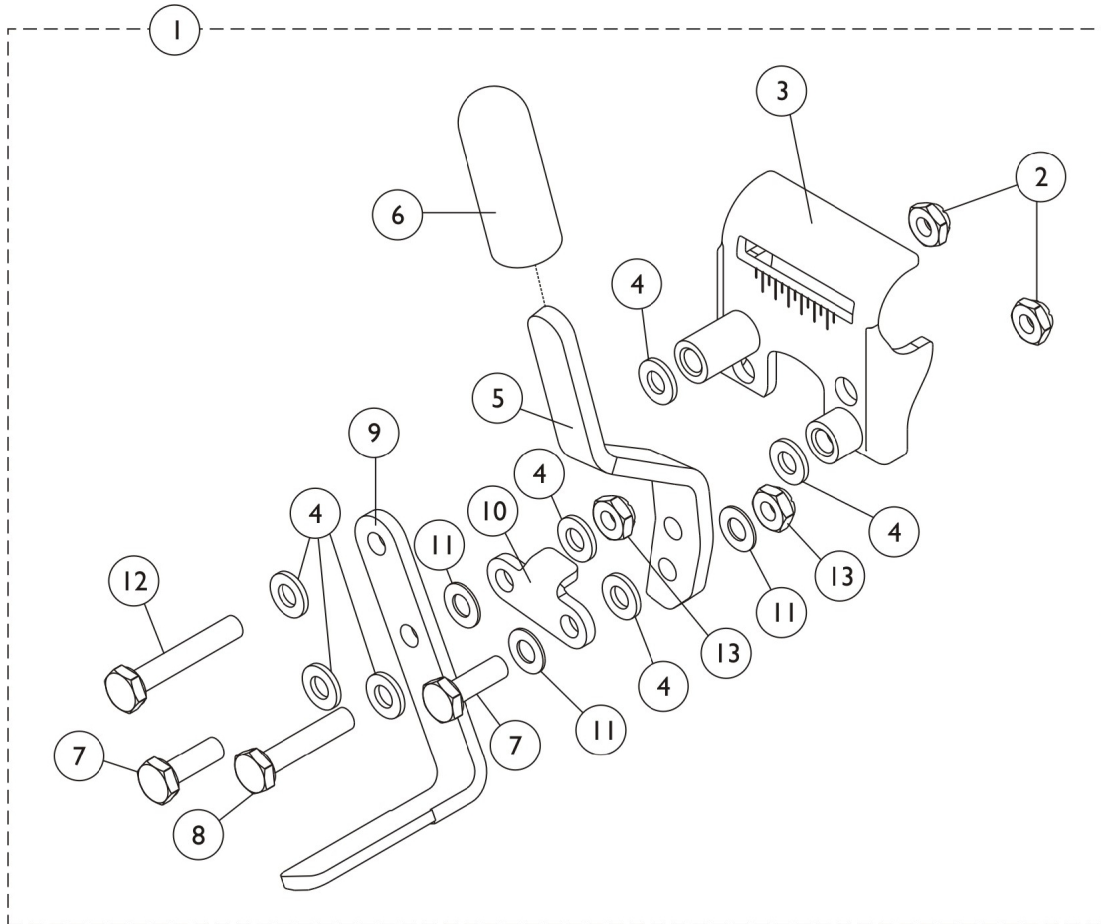
NOTE: Due to the possibility of various manufacturing dates for Tracer IV Wheelchairs built with a serial # starting with "03H" or "03I", replacement parts will need to be ordered thru an Invacare Parts Specialist at 1-800-333-6900.

Item Number	Note	Part Number	Description	Quantity Per	
				Package	Assembly
1	A	1101452	Wheel Lock Assembly, Push / Lock (Black) - Right	1	1
1	A	1101453	Wheel Lock Assembly, Push / Lock (Black) - Left	1	1
1	A	1101454	Wheel Lock Assembly, Pull / Lock (Black) - Right	1	1
1	A	1101455	Wheel Lock Assembly, Pull / Lock (Black) - Left	1	1
2		1025195	Locknut (1/4-20)	1	2
3		1053284	Bracket, Mounting, Black - Right	1	1
3		1053285	Bracket, Mounting, Black - Left	1	1
4		1026033	Washer, Nylon (1/4 x 1/2 x 1/16")	1	7
5		1031780	Handle, Pull/ Lock, Black - Right	1	1
5		1031781	Handle, Pull/ Lock, Black - Left	1	1
5		1102134	Handle, Push/ Lock, Black - Right	1	1
5		1102135	Handle, Push/ Lock, Black - Left	1	1
6		47376X024	Tip, Rubber Wheel Lock Handle, Black	1	1
7		1028687	Screw, Hex Head (1/4-28 x 3/4")	1	2
8		1021406	Screw, Hex Head (1/4-20 x 1-1/4")	1	1
9		1102133	Shoe, Wheel Lock	1	1
10		1102132	Link, Black	1	1
11		1026103	Washer, Nylon (1/4 x 1/2 x 1/32")	1	3
12		1030949	Screw, Hex Head (1/4-20 x 1-1/2")	1	1
13		1025765	Locknut (1/4-28)	1	2
14	E	1017677	Kit, Hardware, Wheel Lock (Pair)	1	1
15			Bolt, Carriage (1/4-20 x 2")	1	2
16			Nut, Hex Flang (1/4-20)	1	2
17	B,C	1067279	Kit, Wheel Lock Shoe Spacer	1	1
18			Spacer, Shoe Wheel Lock (2-7/16")	1	1
19			Screw, Set Socket Cup Point (#8-32 x 3/16")	1	2
17	C,D	1048656	Kit, Wheel Lock Shoe Spacer	1	1
18			Spacer, Wheel Lock Shoe (1-45/64")	1	1
19			Screw, Set Socket Cup Point (#8-32 x 3/16")	1	2
	F	1007318	Wheel Lock Extension w/ Handle (Pair)	1	1

NOTE: A - Includes items 2-13.
B - Required for Chairs with 20" Rear Wheels and Amputee Attachments or SX5 Recliners with 24" Rear Wheels.
C - Includes items 15-16.
D - Required for Chairs with 20" Rear Wheels (no Amputee Attachments) or 22" Rear Wheels with Amputee Attachments.
E - Includes items 18 and 19.
F - Not shown.

Wheel Lock - Removable and Flip Back Arms - Push and Pull to Lock

NOTE: Due to the possibility of various manufacturing dates for Tracer IV Wheelchairs built with a serial # starting with "03H" or "03I", replacement parts will need to be ordered thru an Invacare Parts Specialist at 1-800-333-6900.



Wheel Lock - Removable and Flip Back Arms - Push and Pull to Lock

NOTE: Due to the possibility of various manufacturing dates for Tracer IV Wheelchairs built with a serial # starting with "03H" or "03I", replacement parts will need to be ordered thru an Invacare Parts Specialist at 1-800-333-6900.

Item Number	Note	Part Number	Description	Quantity Per	
				Package	Assembly
1	A	1101452	Wheel Lock Assembly, Push / Lock (Black) - Right	1	1
1	A	1101453	Wheel Lock Assembly, Push / Lock (Black) - Left	1	1
1	A	1101454	Wheel Lock Assembly, Pull / Lock (Black) - Right	1	1
1	A	1101455	Wheel Lock Assembly, Pull / Lock (Black) - Left	1	1
2		1025195	Locknut (1/4-20)	1	2
3		1053284	Bracket, Mounting, Black - Right	1	1
3		1053285	Bracket, Mounting, Black - Left	1	1
4		1026033	Washer, Nylon (1/4 x 1/2 x 1/16")	1	7
5		1031780	Handle, Pull/ Lock, Black - Right	1	1
5		1031781	Handle, Pull/ Lock, Black - Left	1	1
5		1102134	Handle, Push/ Lock, Black - Right	1	1
5		1102135	Handle, Push/ Lock, Black - Left	1	1
6		47376X024	Tip, Rubber Wheel Lock Handle, Black	1	1
7		1028687	Screw, Hex Head (1/4-28 x 3/4")	1	2
8		1021406	Screw, Hex Head (1/4-20 x 1-1/4")	1	1
9		1102133	Shoe, Wheel Lock	1	1
10		1102132	Link, Black	1	1
11		1026103	Washer, Nylon (1/4 x 1/2 x 1/32")	1	3
12		1030949	Screw, Hex Head (1/4-20 x 1-1/2")	1	1
13		1025765	Locknut (1/4-28)	1	2
14	E	1017677	Kit, Hardware, Wheel Lock (Pair)	1	1
15			Bolt, Carriage (1/4-20 x 2")	1	2
16			Nut, Hex Flang (1/4-20)	1	2
17	B,C	1067279	Kit, Wheel Lock Shoe Spacer	1	1
18			Spacer, Shoe Wheel Lock (2-7/16")	1	1
19			Screw, Set Socket Cup Point (#8-32 x 3/16")	1	2
17	C,D	1048656	Kit, Wheel Lock Shoe Spacer	1	1
18			Spacer, Wheel Lock Shoe (1-45/64")	1	1
19			Screw, Set Socket Cup Point (#8-32 x 3/16")	1	2
	F	1007318	Wheel Lock Extension w/ Handle (Pair)	1	1

NOTE: A - Includes items 2-13.
B - Required for Chairs with 20" Rear Wheels and Amputee Attachments or SX5 Recliners with 24" Rear Wheels.
C - Includes items 15-16.
D - Required for Chairs with 20" Rear Wheels (no Amputee Attachments) or 22" Rear Wheels with Amputee Attachments.
E - Includes items 18 and 19.
F - Not shown.



Yes, you can.™

Invacare Corporation

www.invacare.com

One Invacare Way
Elyria, Oh USA
44036-2125
800-333-6900

Technical Support
800-832-4707
Florida Technical Support
407-321-5630

Customer Service
800-333-6900

©2009 Invacare Corporation, Elyria, Ohio.
Invacare, the Medallion Design and Yes you
can. are registered trademarks; Tracer is a
registered trademark of Invacare
Corporation. Revised 04/08/09.

Form No. 03-030