



*The **Contemporary II***

Wireless Adjustable Bed

OWNER'S MANUAL



Model Number:RI-AB52-A18-WWM-L-U-H-CCBH4-AC

Serial Number: _____

(Place your serial number here for ready reference)

This product and all our bedding products are covered by one or more of the following issued and pending U.S. patents including Nos. 7448100, D657157, D663542, D657158, D657156, 8209801, 8209800, D663544, D663543 and other patents pending.

Photos are for illustration purposes only. Not responsible for typographical errors.

COPYRIGHT® 2015 CUSTOMATIC ADJUSTABLE BEDZ

**CERTIFIED
& APPROVED!**



ENERGY STAR is the trusted, government-backed symbol for energy efficiency to save money & protect the environment. The Energy Star Symbol makes it easy for consumers to identify & purchase energy-efficient products that offer savings on energy bills.



The **Contemporary II** *Wireless Adjustable Bed*



**CERTIFIED
& APPROVED!**



ENERGY STAR is the trusted, government-backed symbol for energy efficiency to save money & protect the environment. The Energy Star Symbol makes it easy for consumers to identify & purchase energy-efficient products that offer savings on energy bills.

Table of Contents

Safety Precautions	1
Parts List	3
Installation Guide	4
Wireless Hand Control Operation Guide	6
Emergency Power Down Operation Guide	9
Advanced Highlight Features	10
Troubleshooting	11
Warranty & Registration	13

Model Number: RI-AB52-A18-WWM-L-U-H-CCBH4-AC



Intertek
4000553



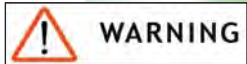
The **Contemporary II** Wireless Adjustable Bed

Safety Precautions

ATTENTION!

IMPORTANT SAFETY INSTRUCTIONS.

PLEASE READ THESE INSTRUCTIONS THOROUGHLY BEFORE USING THIS PRODUCT.



WARNING

ELECTRICAL SAFETY

Always unplug this adjustable bed frame from the electrical outlet before any cleaning or maintenance of the bed frame. To safely disconnect, make sure all controls are in the off position, then remove the plug from the outlet.

Keep cord away from heated surfaces. Keep air openings free of lint, hair and the like - never operate when air openings are blocked. Never drop or insert any object into any opening. Use only indoors.

Cease use of this bed frame and contact the Adjustable Bed base center for repair if: (1) it has a damaged cord or plug, (2) it is not working properly, (3) it has been dropped or damaged, or (4) it has been dropped into water.

GROUNDING SAFETY

To reduce the risk of electric shock, electrical fire, or faulty operation of this product, your Adjustable Bed features a polarized plug meant to be used only with a grounded electrical outlet. If this plug does not fit into your outlet, contact a qualified electrician to install a properly grounded outlet. Failure to use a properly grounded outlet for this product will compromise this important grounding safety feature. The use of adapters is not recommended unless the outlet is checked by a qualified electrician to ensure the proper grounding of the adapter. Please note: Unauthorized modifications to this product could void the electrical portion of your warranty.

WARRANTY WARNING!

This bed is specifically designed to require no maintenance by you, the user. Any opening or tampering with the control box, motors or hand controls (with the exception of the battery compartment if equipped) will result in a void of the warranty. Only those authorized may conduct repairs or part replacement on your adjustable bed.



FOR OPTIMAL SAFETY, YOUR ADJUSTABLE BED SHOULD BE PLUGGED INTO A SURGE PROTECTOR

(not supplied with this Adjustable Bed).

IN-HOME USE ONLY

This Adjustable Bed is designed exclusively for in-home use.

HOSPITAL DISCLAIMER: It is **NOT** designed for hospital use and is **NOT** designed to meet hospital standards.

Do not use this bed with **TENT TYPE** oxygen therapy equipment or use near explosive gases.

IMPORTANT SAFETY FEATURES

Weight fail safe feature: In the case that an overload of weight is placed on the head or foot mechanism, the control unit will automatically stop all functions. The control unit will automatically resume all functions 30 seconds after excess weight is removed.

Weight Restrictions: The recommended weight limits on our adjustable beds are:

Twin/TXL/Split QN/Split CA King: 575 Pounds, Full/FXL: 600 Pounds, Queen: 650 Pounds.

The Contemporary II

Wireless Adjustable Bed

Safety Precautions—cont'd



IMPORTANT SAFETY FEATURES cont'd

Locking caster feature: This Adjustable Bed may be equipped with special locking casters. For your safety, these casters will prevent bed movement when all casters are in the locked position. To lock casters, push down the safety latch on the caster. To resume product mobility, lift the safety latch up.

Please note: If your Adjustable Bed is positioned on a hard floor surface such as hardwood or tile, it is strongly recommended that rubber caster cups or carpet squares are placed under the casters in addition to locking them in place. Casters will not roll when locked, but may slide on an uncarpeted surface.

RADIO FREQUENCY IS 433.92 MHZ.

FCC compliance device complies with part 15 of the FCC Rules. Operation is subject to the following two conditions: (1) This device may not cause harmful interference, and (2) this device must accept any interference received, including interference that may cause undesired operation.

Any change to the antenna or the device could result in the device exceeding the RF exposure requirements and void user's right to operate the device.

The input transformer voltage is AC120V 60HZ; the output voltage is DC24V 3A. In the case of a short-circuit, a fuse on the transformer will blow to protect the electrical equipment of the device (Fuse: 1A~1.5A.). Should this occur, you should seek professional assistance to fix the problem, and call Customer Care at: 1-877-826-8757



WARNING

CONSUMERS WITH PACEMAKERS

It is possible that the (optional) vibrating feature of this bed may be misinterpreted by some pacemakers as movement and/or exercise. This is common with any product that produces a vibrating motion, and may or may not affect your pacemaker. Please consult your physician with any concerns.

PRODUCT RATINGS

Lift Motor Restrictions: The lift motors in this bed are NOT designed to operate continuously for more than three (3) minutes over a thirty (30) minute time period, or approximately 10% duty cycle. To ensure reliable functionality and full life of this product, do not attempt to exceed these limits.

NOTE: Attempting to circumvent or exceed this rating will shorten the life expectancy of the product and may void the warranty.

The structure of the bed will support the recommended weight when distributed evenly across the bed. **The head and foot sections are not designed to individually support or lift this amount of weight.** For optimal performance, entering and exiting the adjustable bed with the bed in the flat or level position is recommended.

NOTE: Exceeding the recommended weight restrictions could damage your adjustable bed and void your warranty.



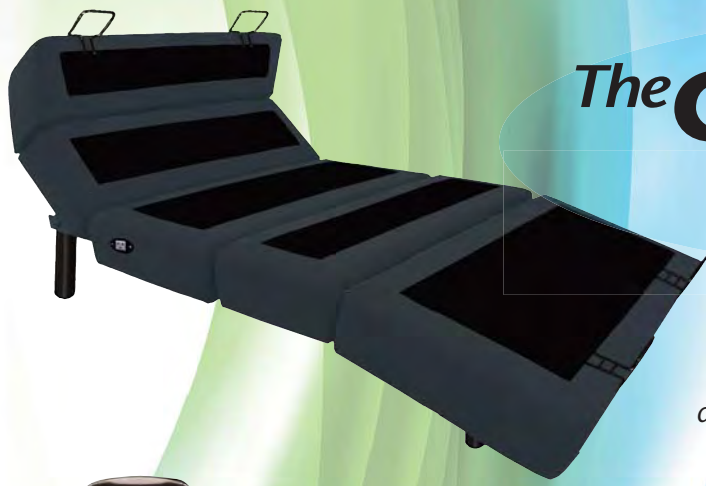
WARNING

SMALL CHILDREN AND PETS WARNING

Immediately dispose of all packing materials as it can pose a smother risk to small children and pets. Injury could occur also if children or pets are permitted to play on or under the bed. Do not allow children to operate this bed without adult supervision.

SAVE THESE INSTRUCTIONS!

Proper operation of your Adjustable Bed is necessary to ensure the long life and durability you expect from a high-quality product. The manufacturer has tested and inspected this product prior to shipment.



The Contemporary II

Wireless Adjustable Bed

Parts List

NOTE: Before discarding any packing materials, check the adjustable bed frame carton and verify all items in the parts list are included:



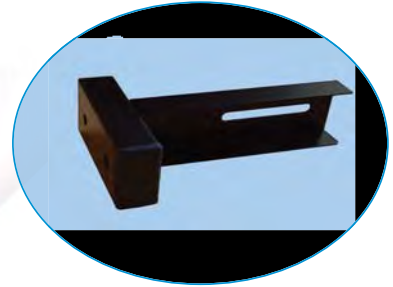
A. Remote Control (1)



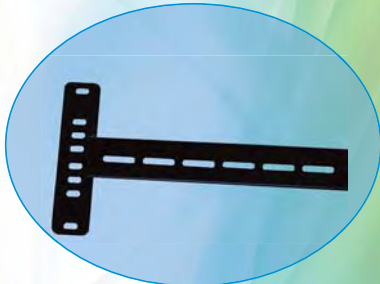
B. "Custom-Clip"
Mattress Retainer Bracket (4)†



C. Post Bed Legs (2)



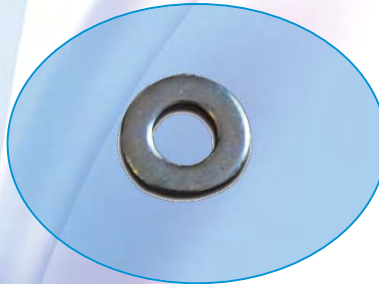
D. Inner Headboard Bracket (2)



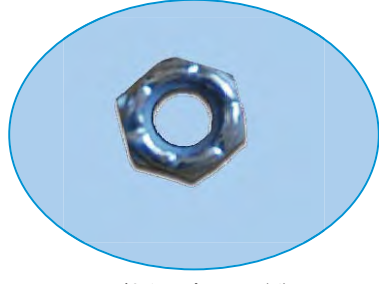
E. Outer Headboard Bracket (2)



G. Headboard Bracket Bolt (6)



I. 5/16 Inch Washer (12)



J. 5/16 Inch Nut (6)



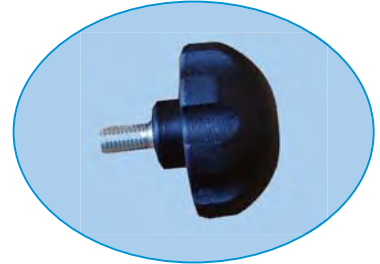
K. Allen Key Wrench (1)



L. Wrench (1)



M. Lounger Post Bed Leg (2)



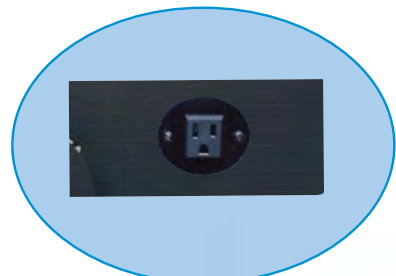
N. Knob Bolt (2)



O. Spring Washer (2)



P. Velcro Leg Strap (1)**



R. AC Electric Outlet (120v) (2)†

**Only in TXL, SCK, SQ models.

† Indicates Part is attached to Base



Installation Guide

The Contemporary II

Wireless Adjustable Bed



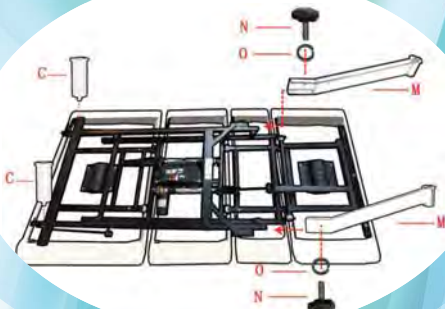
STEP 1.



For safety reasons, the following should be performed by 2 people. Carefully lift the bed frame unit out of the shipping carton with the top side facing downward.

STEP 2. Assembling Bed Legs

For this step, you will need: 4 bed legs (C and M), Knob bolts (N), and spring washers (O), which can be found in the Accessories box. **First** turn the two (C) bed legs in a clockwise direction into the holes in the frame as shown above. **Next** thread each Lounger bed leg (M) into the C-channel frame. Make sure the leg opening is facing inside the frame. **Then**, insert a Knob bolt (N) fitted with a spring washer (O) into the predrilled hole in the C-channel frame and through the lounger bed leg. Tighten the Knob bolt in place. Repeat with the remaining Lounger bed leg.



DO NOT OVERTIGHTEN THE BED LEGS.

NOTE: Bed may be equipped with special locking casters. To prevent movement of this product, all four casters should be in the locked position. It is recommended that rubber caster cups or carpet squares (not included) are placed under casters in addition to locking them in place. Casters will not roll when locked, but may slide on an uncarpeted surface.

STEP 3.

Remove and extend the power cord from the frame.

Important!

MAKE SURE POWER CORDS DO NOT OBSTRUCT ANY ADJUSTABLE BED MECHANISMS.

STEP 4.

Take plastic wrapping off the base frame.

STEP 5.

Carefully rotate the base frame so the top side is facing upward. Be careful not to rest the frame on its side. The weight may damage the legs.

STEP 6.

Plug the power cord into a grounded electrical outlet.

NOTE: For optimal safety, a surge protector should be used (not supplied with this Adjustable Bed).

STEP 7.

Install batteries in hand unit.

Try all functions on the hand control to ensure all features are operational.

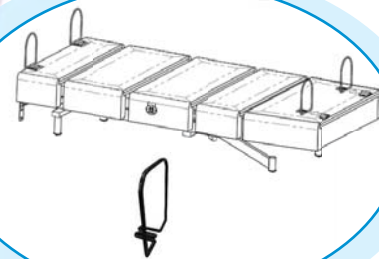
If the bed does not work, refer to Troubleshooting on pg. 10

STEP 8.

Return bed to flat or level position.

STEP 9. Attaching the "Custom-Clips" Mattress Retainer Brackets

Your Adjustable base includes our "Custom-Clips" Mattress Retainer Brackets that sets up quickly and easily with NO tools or hardware required. To attach the "Custom-Clip", position each bracket so that the steel arc frame is facing away from the base deck. Align the two prong rods on the flat side of the bracket with the corresponding holes on the base surface. Simply press the prong rods into the holes so that they are inset into the decking. Repeat this procedure on all 4 corners of the base (2 at the foot and 2 at the head). The "Custom-Clips" will help anchor and secure your new mattress to the deck surface making flexibility easier.



NOTE: IMPORTANT!

Some mattresses may not be suitable for use with the HEAD "Custom-Clips" Brackets. If you notice adjustment position challenges, remove the head "Custom-Clips" brackets Only from the frame. NOTE: It is normal for the retainer brackets to indent into the mattress border when using lift positions. This secures the mattress to the bed deck providing superior body contouring.

If the adjustable frame is to be set up without a headboard, simply install a mattress on the frame. Installation is now complete. If a headboard is to be installed, proceed to step 10 on next page.



The Contemporary II

Wireless Adjustable Bed



IMPORTANT NOTES:

Failure to follow the installation steps as they appear in this guide could result in damage to your adjustable bed frame.

Make sure to position the bottom of the headboard cross member no more than 3 inches (76.2 mm) between the headboard and the top of the mattress.

STEP 10. Assemble the Headboard Bracket

i. Use the hand control to elevate the head of the bed so the bed base frame is reachable.

ii. Slide the inner headboard bracket (D) into the C-channel frame. (The bracket opening and the C-channel opening should face each other to create a box shape.) Insert a retainer bolt (G) fitted with a 5/16 inch washer (I) into one of the predrilled holes in the C-channel frame and through the inner headboard bracket. Tighten in place with a 5/16 inch washer (I) and 5/16 inch nut (J). Repeat on the other side.

iii. Place the open side of the outer headboard bracket (E) onto the exposed square tube of the inner headboard bracket (D) to create a tight fit between (D) and (E). Insert a retainer bolt (G) fitted with a 5/16 inch washer (I) into the outer headboard bracket (E) and through the inner headboard bracket (D). Hand tighten using a 5/16 inch washer (I) and a 5/16 inch nut (J). (Leave loose enough for adjusting.) Repeat on the other side.

iv. When headboard brackets are assembled, make sure there is a space of 1.5 (38.1 mm) to 2 inches (50.8 mm) between the edge of the bed base and the headboard brackets.

v. Securely fasten the headboard bolts (not included with your adjustable bed) to the end of the headboard bracket assembly.

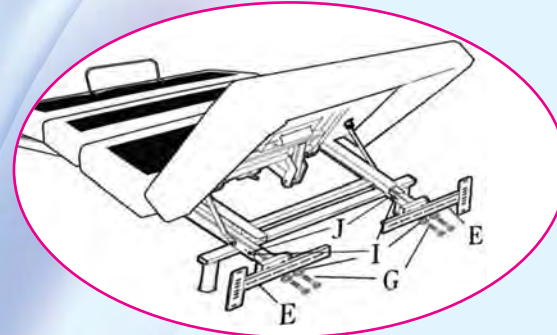
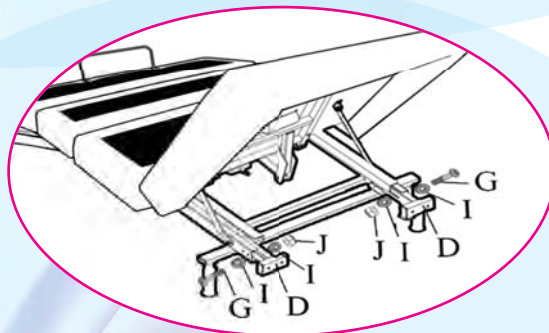
vi. Measure the distance from the center of one mounting hole in the headboard bracket assembly to the center of the other.

vii. If you need to adjust the headboard brackets, unscrew the bolts holding the outer headboard brackets and move them the necessary distance. Reinstall the bolts and securely tighten.

STEP 11.

Place your mattress on the adjustable bed frame surface. Your adjustable bed and headboard installation is now complete.

If the bed comes with a programming option, turn to the Wireless Hand Control Operation Guide (located on pages 6 and 7) to proceed.



Velcro Leg Straps (Optional: To avoid Base Separation)

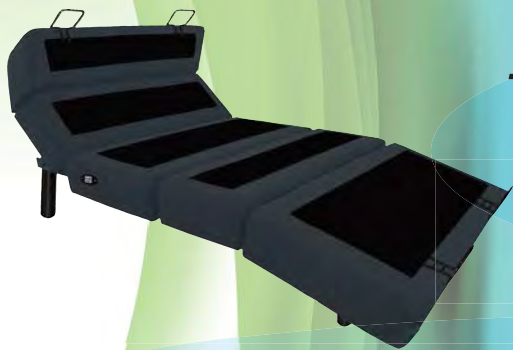


To help prevent separation when using King Size (2 TXL) California King Size (2 SCK) or split Queen Size (2 SQ).

Please use the enclosed Velcro Straps.

1. Simply wrap the legs together (Front & Back) tightly using the velcro straps.

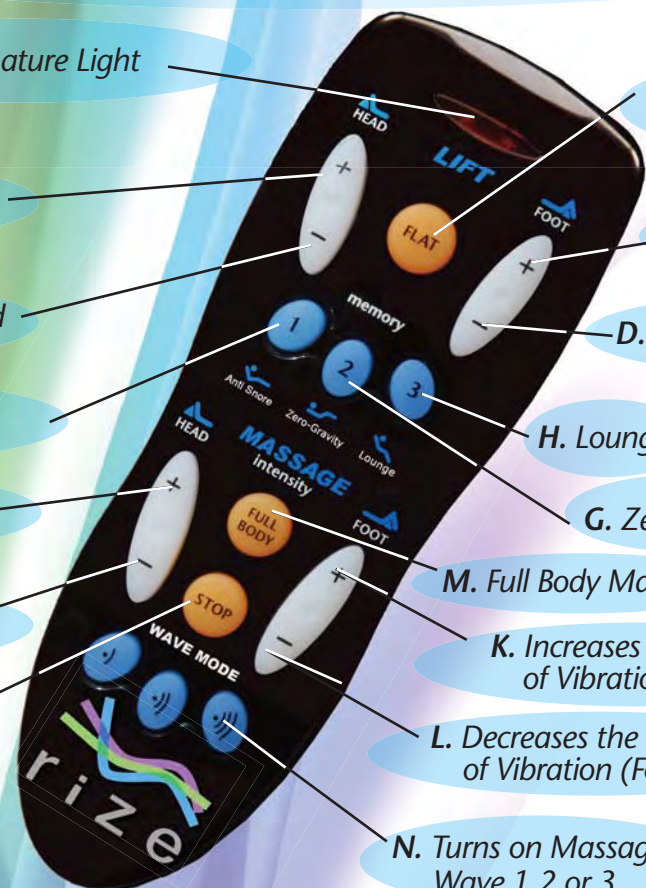
2. Fastening the straps will help prevent movement & maintain stability.



The Contemporary II

Wireless Adjustable Bed

Wireless Hand Remote Operation



LED Signature Light

A. Raises the Head of the Bed

B. Lowers the Head of the Bed

E. Anti -Snore

I. Increases the Intensity of Vibration (Head)

J. Decreases the Intensity of Vibration (Head)

O. Stops Massage

F. Returns Head & Foot to FLAT Position (hold 2 seconds)

C. Raises the Foot of the Bed

D. Lowers the Foot of the Bed

H. Lounge

G. Zero Gravity

M. Full Body Massage

K. Increases the Intensity of Vibration (Foot)

L. Decreases the Intensity of Vibration (Foot)

N. Turns on Massage Wave 1,2 or 3

P. Under Bed Light



Head and Foot Position Adjustments (A, B, C, D)

• Press & Release button to raise or lower the head and foot sections of your adjustable bed. The premium "Wall-Glide" feature will automatically synchronize with all Head & Foot adjustments. NOTE:* "D" will allow the lowering of the foot section for a "LOUNGE" position.

Anti-Snore Relief (E)

• Press to gently raise head section to allow easier air intake which can help reduce snoring.

Bed "Flat" Button (F)

• Press down and hold for 2 seconds to return bed to the flat position.

Zero Gravity (G)

• This function allows your legs to be lifted to a position slightly higher than the chest. This allows blood to flow back to the heart, reducing stress and fatigue.



Contouring "Head Tilt" Feature Included!



Underbed LED Lighting

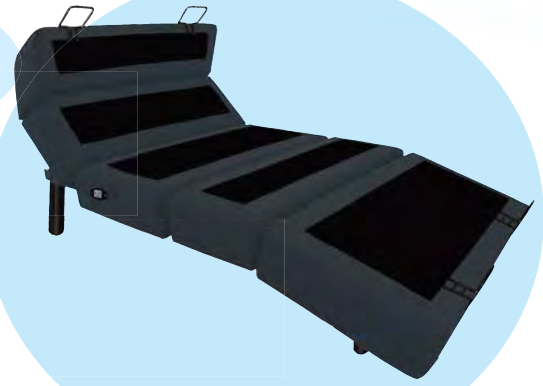


Now with AC Outlets mounted on each side of the frame for charging all your smart devices

FOR YOUR SAFETY, READ THE OWNER'S MANUAL CAREFULLY AND COMPLETELY BEFORE OPERATING THIS PRODUCT. ELECTRIC SHOCK MAY OCCUR IF ELECTRICAL COMPONENTS ARE NOT INSTALLED OR OPERATED ACCORDING TO THESE GUIDELINES.

The Contemporary II

Wireless Adjustable Bed



Wireless Hand Remote Operation

Continued

Lounge (H)

- Press & Release to lower your legs, Raise your head and relax in a lounge position.

Head and Foot Massage Adjustments (I,J,K,L)

- Press & Release button to activate the massage feature on the head and foot of the bed (starting at intensity 4 of 8). Gradually increase or decrease intensity of massage vibration by pressing the appropriate button. The lowest setting on each massage unit will turn off the respective vibration. The massage feature is programmed with an Auto Shut-Off Timer that will automatically turn off the massage after 15 minutes of continuous use.

Full Body Massage (M)

- Press to activate both the head and foot massages at the same time.

Wave Massage Adjustments (N)

- Activates both units to wave mode massage. **NOTE:** You must stop the massage in order to activate another

Under Bed Light (P)

- Press the button to turn on or off the under bed light. (Button on back of Hand Wand) massage setting such as full body or another wave massage.

REMOTE FEATURES

- The Adjustable Bed uses a RF (Radio Frequency) hand control system.

NOTE: This bed may show minor intermittent performance because of typical RF interference. This is normal in the operation of the bed, not a defect.

- The buttons are backlit, when pressed, to aid in the visibility of the remote in low light environments.
- It is not necessary to face the receiver to operate the remote control. Remote signal is best transmitted within 9 feet (3 meters) of the receiver.

SAFETY



- In the case that an overload of weight is placed on the head or foot mechanism, the control unit will automatically stop all functions. The control unit will automatically resume all functions 30 seconds after excess weight is removed.
- Massage motors will automatically shut off after running continuously for 15 minutes. All massage functions will be operational again after 5 minutes.
- The input transformer voltage is AC120V 60HZ, the output voltage is DC24V 3A. In the case of a short-circuit, a fuse on the transformer will blow to protect the electrical equipment (Fuse: 1A~1.5A.). Should this occur, you **MUST** seek professional assistance to replace the fuse. **Call Customer Care at: 1-877-826-8757**

Notice: The changes or modifications not expressly approved by the party responsible for compliance could void the user's authority to operate the equipment.

Important Note: To comply with the FCC RF exposure compliance requirements, no change to the antenna or the device is permitted. Any change to the antenna or the device could result in the device exceeding the RF exposure requirements and void user's authority to operate the device.

THIS DEVICE COMPLIES WITH PART 15 OF THE FCC RULES. OPERATION IS SUBJECT TO THE FOLLOWING TWO CONDITIONS: (1) THIS DEVICE MAY NOT CAUSE HARMFUL INTERFERENCE AND (2) THIS DEVICE MUST ACCEPT ANY INTERFERENCE RECEIVED, INCLUDING INTERFERENCE THAT MAY CAUSE UNDESIRE OPERATION.

The Contemporary II

Wireless Adjustable Bed



Wireless Hand Remote Programming

(1 Hand Control and 1 Bed)

Note: Programming by the user is only needed on replacement remotes.

1. Insert batteries into the Hand remote control (2xAA batteries).
2. Make sure your adjustable bed is plugged into a working grounded outlet or surge protector.
3. Hold down the learn button for 3 seconds.
4. The LED signature light will illuminate. This means the RF frequency code setting function has been activated.



Figure 1: Press the "Learn Button" to initiate the RF learning mode.



Figure 2: The red LED will light up when the control box is in the learning mode.

5. Press any button on the remote control



Figure 3: Hand held remote control

6. When the receiver light flashes, the RF frequency code learning process is complete.



Figure 4: A flashing red LED indicates the control box has received the remote control frequency

The Contemporary II

Wireless Adjustable Bed
(1 Hand Control and 2 Beds)

1. Follow steps 1 through 6 above for 1 hand control and 1 bed.
2. Repeat the steps for the other bed using the same hand control.



The **Contemporary II**

Wireless Adjustable Bed

Wireless Emergency Power Down Feature



Your adjustable base is equipped with an emergency lowering feature. Follow the steps below in the event that your base is in the raised position during a power outage.

1. Locate and remove the 9 volt battery cover.
2. Install two (2) Alkaline 9 volt batteries. (Not Included)

Figure 5: 9 volt battery cover



Figure 6: Install the 9 volt batteries



3. Replace the battery cover.

Figure 7: Replace battery cover



4. Press either the "Flat" button (F) or the individual lowering buttons (B, D) to lower your bed to the level position.

Figure 8: Lower the bed using the 9 volt battery backup system



NOTE:

THE TWO (2) 9 VOLT BATTERIES ARE ONLY RATED FOR SINGLE USE. AFTER THE EMERGENCY LOWERING, REPLACE WITH NEW ALKALINE BATTERIES.



The **Contemporary II** Wireless Adjustable Bed

Advanced Feature Highlights

This Ultra-Premium Adjustable Bed combines style, with more innovative features & options to totally customize & personalize your sleep experience.

Auto "Head Tilt" Feature

This unique feature tilts the head panel slightly inward before the upper body lifting occurs creating an adjustment effect that cradles & contours perfectly with the natural arch of your back providing greater head, neck and shoulder support and comfort.



Lounge Feature

The "LOUNGE" feature provides you with a greater range of motion with the unique ability to lower your legs in a more comfortable & relaxed position that naturally reduces back stress & tension. The premium feature is not found in most other adjustable beds on the market.



AC Mounted Power Outlets

The convenient AC plug outlets on each side of the base provides easy electrical access for today's high tech devices



Custom Clip Mattress Brackets

The "Custom Clips" Mattress retainer brackets add style & function. "Custom Clips" requires no tools, screws or bolts making assembly quick and easy. The "Custom Clips" design also helps your mattress hug closely to the base as you adjust to your perfect position.



Underbed LED Lighting

Safely navigate your way in & out of bed by simply activating the Underbed "Night Light" from your remote. The softly illuminating LED Lamps create a 'Halo' effect around your bed so you can avoid hidden obstacles in the dark.

CERTIFIED & APPROVED!



ENERGY STAR is the trusted, government-backed symbol for energy efficiency to save money & protect the environment. The Energy Star Symbol makes it easy for consumers to identify & purchase energy-efficient products that offer savings on energy bills.

The **Contemporary II** Wireless Adjustable Bed



Troubleshooting

SYMPTOM

SOLUTION

Hand Remote LED illuminates and appears Normal, but will not operate bed.

- 1) Is the power cord plugged into a working & grounded electrical outlet?
 - **NOTE:** A grounded, electrical surge protection device is recommended (not supplied)
- 2) Test outlet by plugging in an appliance you know works properly.
- 3) Check low amp fuse on the Control Box under bed. Replace Fuse if blown.

None of the Functions on the Adjustable Bed will Operate

- 1) Re-Program the hand control (as indicated in the Manual provided with this product, for programming procedures).
- 2) Unplug the power cord. After 45 seconds, plug in to electrical outlet. This should reset the electronic components.
- 3) The Home Electrical circuit breaker may have been tripped. Reset circuit breaker if needed.
- 4) Check surge protection device or electrical outlet to insure working order. Test outlet by plugging in a known working appliance.
- 5) Check low amp fuse on Control Box under bed. Replace Fuse if blown.

Hand Remote Function Keys will not illuminate.

- 1) Replace batteries in the hand remote.
- 2) Check that batteries are installed properly.

Head or foot section Function Key will elevate bed, but will not return to the horizontal (Flat) position.

- 1) Your Bed may be obstructed preventing smooth operation. Remove obstructions from around & under the bed.
- 2) Check that Head section has clearance from headboard or wall.
- 3) Headboard may be too close the edge of the mattresses. Verify a 1.5" (38.1mm) to 2" (50.8mm) distance between headboard brackets and mattress. Adjust if required.

The **Contemporary II** Wireless Adjustable Bed



Troubleshooting *Continued*

In the event the adjustable bed fails to operate, investigate the symptoms and possible solutions provided in the chart below:

SYMPTOM

SOLUTION

Activating Head or Foot Lift Function causes "pulsing" or "stuttering" when operating feature.

- 1) Check batteries and installation in Hand Remote.
- 2) Assure that the Function Key is pressed Directly & Firmly.
- 3) Radio Frequency Interference from other remotes or electronic devices may be affecting normal operation.

Massage Motors seem excessively loud during operation.

- 1) Hard surface flooring may cause added vibration. To correct, place carpet pieces or rubber Furniture Cups under each leg or caster of the bed.
- 2) Elevate the head or foot section a short distance (with the hand control) to realign the lift/lower mechanisms with the bed support platform.
- 3) Check that the bed is not in direct contact with a wall, nightstand, or other object that may cause vibration or noise.
- 4) If Adjustable Bed is installed on top of a bed frame, check that the massage motors are not causing bed frame (or bed frame components) to vibrate or rattle.
- 5) Check that the headboard attachment hardware is tightened firmly (if used).

**IF YOU EXPERIENCE ANY TROUBLE WITH YOUR
BED WITHIN THE WARRANTY PERIOD,
PLEASE CONSULT THE TROUBLESHOOTING GUIDE PROVIDED WITH YOUR BED
AND ONLINE (IF APPLICABLE). IF PROBLEMS PERSIST, PLEASE CALL:**

**CUSTOMER SERVICE TOLL FREE NUMBER
1-877-826-8757**

Please Have Your Receipt Ready And Available

THANK YOU AND ENJOY YOUR ADJUSTABLE BED!



The Contemporary II Wireless Adjustable Bed

WARRANTY

20-Year Premium Limited Warranty for Adjustable Beds

CUSTOMOMATIC ADJUSTABLE BEDZ[®], (CUSTOMOMATIC ADJUSTABLE BEDZ[®]) warrants this adjustable bed to the consumer who is the original purchaser (the "purchaser," subject to the terms and conditions set forth herein). This warranty begins on the "warranty commencement date," or the purchase date for new and unused adjustable beds. For adjustable beds that have been used either as floor or display models, the "warranty commencement date" is the date the bed was manufactured. Therefore, a floor or display model bed is covered by a portion of the limited 20-year warranty. The purchaser must show original proof of purchase for warranty to be valid. If proof of purchase is not presented, CUSTOMOMATIC ADJUSTABLE BEDZ[®] holds full right to determine whether the adjustable bed is covered by the warranty. In so doing, CUSTOMOMATIC ADJUSTABLE BEDZ[®] has the right to use the manufacturing date as the warranty commencement date. The 20-Year Limited Warranty is extended solely to the original purchaser. This warranty is not transferrable.

FULL 3-YEAR WARRANTY (Parts)

This adjustable bed is warranted against defects in the workmanship or materials for a period of three years from the warranty commencement date. Upon notice during the first three years after the warranty commencement date, CUSTOMOMATIC ADJUSTABLE BEDZ[®] will replace any defective adjustable bed part based on the criteria listed below.

YEAR 1: Full Coverage of Parts & Labor

This adjustable bed is warranted against workmanship and craftsmanship defects or defective materials for up to one (1) year from the warranty commencement date. When notified by purchaser within the first year, CUSTOMOMATIC ADJUSTABLE BEDZ[®] will supply replacements (at no cost to the purchaser) for any defective or malfunctioning adjustable bed part. CUSTOMOMATIC ADJUSTABLE BEDZ[®] must authorize that the part is defective or malfunctioning before replacement parts are supplied to purchaser or any labor costs are absorbed. Once CUSTOMOMATIC ADJUSTABLE BEDZ[®] approves the part is defective or malfunctioning, they will absorb the costs for pre-authorized labor and any transportation costs associated with the repair/replacement of any parts. For this one (1) year warranty to be valid, any and all defective or malfunctioning parts must be returned by the original purchaser (or by an authorized CUSTOMOMATIC ADJUSTABLE BEDZ[®] in-home technician or agent) to CUSTOMOMATIC ADJUSTABLE BEDZ[®]'s Customer Care Center within 15 days of purchaser receiving replacement parts.

YEARS 2 And 3: Full Coverage of Parts Only.

After the first year from the warranty commencement date, and up to three (3) years from the warranty commencement date, CUSTOMOMATIC ADJUSTABLE BEDZ[®] will provide replacement parts for any defective or malfunctioning adjustable bed part upon receiving written notice from the original purchaser. This two (2) year warranty is only valid once any and all defective or malfunctioning parts are returned by the original purchaser to CUSTOMOMATIC ADJUSTABLE BEDZ[®]'s Customer Care Center within 15 days of purchaser receiving replacement parts. The original purchaser is responsible for all service, transportation, labor and shipping & handling costs related to the delivery and/or replacement of the defective or malfunctioning part(s).

YEARS 4 Through 20: Prorated Coverage of Non Electrical Parts Only.

After the third year of the warranty commencement date, and up to twenty (20) years from the warranty commencement date, CUSTOMOMATIC ADJUSTABLE BEDZ[®] will issue replacements (upon terms and conditions described below) for any mechanical bed part found to be defective or malfunctioning upon receiving written notice from the original purchaser. This does not apply to electronics, electrical components, massage motors and lift motors. Purchaser will be required to pay 1/17th of the (then) current replacement cost of the part multiplied by the number of years past the third year from the warranty commencement date. CUSTOMOMATIC ADJUSTABLE BEDZ[®] will take responsibility for the remaining cost of the replacement part. This seventeen (17) year warranty is only valid once any and all defective or malfunctioning parts are returned by the original purchaser to CUSTOMOMATIC ADJUSTABLE BEDZ[®]'s Customer Care Center within 15 days of purchaser receiving replacement parts. Purchaser holds responsibility for all labor and transportation costs related to the replacement of the defective part up to twenty (20) years after the commencement date. After the twentieth year, purchaser will be responsible for the entire cost of repair and replacement of all defective parts and materials, including service and transportation costs associated with the repair or part replacement.

ADDITIONAL TERMS AND CONDITIONS

This warranty is considered void: 1) if any damage to the adjustable bed is caused by the purchaser; 2) if any unauthorized repair or replacement of parts has taken place; 3) if the adjustable bed has been handled incorrectly in transit or otherwise, subjected to physical or electrical abuse or misuse, or otherwise operated in a way that does not adhere to the guidelines for proper operation and maintenance outlined in the Owner's Manual, this warranty, and any other applicable text published or approved by CUSTOMOMATIC ADJUSTABLE BEDZ[®]; 4) in relation to any damage to mattresses, fabric, cables, electrical cords or items supplied by dealers. Contact the dealer or relevant party for warranty information on these items; 5) if any unnecessary service calls have taken place, including fees for in-home service calls solely for the consumer's educational purposes or for finding an unsatisfactory power connection; 6) if the recommended weight restrictions (Twin/TXL/Split QN/Split CA King: 575 Pounds, Full/FXL: 600 Pounds, Queen: 650 Pounds) and guidelines for proper distribution of weight outlined in the Owner's Manual are not followed.

Repairs to or replacement of the adjustable bed or its components under the terms of this limited warranty will apply to the original warranty period and will not serve to extend such period.

The decision for the repair or replacement of defective parts under this warranty is at the option and sole discretion of CUSTOMOMATIC ADJUSTABLE BEDZ[®].

REPAIR OR REPLACEMENT OF ADJUSTABLE BED PARTS WILL BE THE SOLE REMEDY OF THE PURCHASER. CUSTOMOMATIC ADJUSTABLE BEDZ[®], AND THEIR PARENTS, SUBSIDIARIES, DIVISIONS, AFFILIATES OR AGENTS HOLD ABSOLUTELY NO OR ANY SPECIAL, INDIRECT, INCIDENTAL, OR CONSEQUENTIAL DAMAGES OR FOR ANY OTHER DAMAGE, CLAIM, OR LOSS NOT EXPRESSLY COVERED BY THE TERMS OF THIS WARRANTY.



The **Contemporary II** Wireless Adjustable Bed

WARRANTY

No reimbursement will be made to the purchaser for inconvenience, removal, installation, setup time, lack of use, shipping, or any other costs or expenses not covered by this warranty. CUSTOMATIC ADJUSTABLE BEDZ® does not hold responsibility for in-home service on adjustable beds. You must contact your dealer or party that sold the adjustable bed for any terms and conditions relating to their in-home service, should any exist.

CUSTOMATIC ADJUSTABLE BEDZ®, AND THEIR PARENTS, SUBSIDIARIES, DIVISIONS, AFFILIATES OR AGENTS MAKE NO OTHER WARRANTY WHATSOEVER, EXPRESS OR IMPLIED. ALL IMPLIED WARRANTIES OF MERCHANTABILITY AND FITNESS FOR A PARTICULAR PURPOSE ARE DISCLAIMED BY NAME AND EXCLUDED FROM THIS AGREEMENT.

The above limitation or exclusion may not apply to every purchaser as some states disallow exclusions or limitations of incidental or consequential damages. This warranty allows the purchaser specific legal rights. The purchaser may also have other rights, which can vary from state to state. This warranty is valid in the contiguous United States, and includes Alaska, Puerto Rico and Canada.

WARRANTY REGISTRATION FORM



Name _____

Phone _____

Address _____

Address _____

City _____

State _____ Zip _____

Email _____

Store where purchased _____

Bed Serial No. _____

Invoice No. _____

SURVEY

Gender: ___ M ___ F

Age: ___ 18-30 ___ 31-40

 ___ 41-50 ___ 51-60

 ___ 61-70 ___ 71 & up

Reason for purchasing an adjustable bed:

___ Health ___ Comfort ___ Other

How did you find out
about CUSTOMATIC Bedz:

___ Advertising ___ A friend ___ Store

___ Article/Review ___ Internet ___ Other

PLEASE MAIL TO:

CUSTOMATIC Adjustable Bedz®

Customer Care Center

PO. BOX 10909

Riviera Beach, FL 33419 USA



The **Contemporary II**
Wireless Adjustable Bed



OWNER'S MANUAL

**IF YOU EXPERIENCE ANY TROUBLE WITH YOUR BED WITHIN THE WARRANTY PERIOD,
PLEASE CONSULT THE TROUBLESHOOTING GUIDE PROVIDED WITH YOUR BED
AND ONLINE (IF APPLICABLE). IF PROBLEMS PERSIST, PLEASE CALL:**

**CUSTOMER SERVICE TOLL FREE NUMBER
1-877-826-8757**

Please Have Your Receipt Ready And Available

THANK YOU AND ENJOY YOUR ADJUSTABLE BED!