

PHOENIX HD4

ActiveCare
drive™ Mobility

NEW!

POV
GROUP1
HCPCS
CODE:
K0801



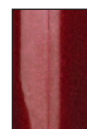
NEW
INTERCHANGEABLE
COLOR PANELS
(RED & BLUE)
INCLUDED!



EASY TO
ASSEMBLE AND
DISASSEMBLE
INTO 4 PIECES!



Blue



Red

**COMES
WITH
BATTERIES!**

Phoenix HD4 Phoenix HD 4 Wheel Heavy Duty Travel Scooter

1P PHOENIXHD4 Red/Blue, 1/cs

FEATURES:

- 350 lb. weight capacity
- 4 wheel configuration provides for enhanced stability on rougher outdoor terrain
- Quick and easy disassembly into 4 easy-to-transport pieces
- Comfortable, height adjustable seat with flip back, adjustable width arms
- 4 mph top speed and a 15 mile maximum cruising range
- Solid, non-marking, flat-free tires for worry-free travel
- Large front carry basket
- Adjustable angle tiller has auto-straightening feature and allows the user to position the controller into the most ideal driving position
- Anti-tip wheels for greater safety
- Seat back folds completely flat, which comes in handy when transporting or storing the scooter
- Includes two sets of interchangeable color panels in red & blue
- Comes with easy to remove, quick connect battery pack that can be charged separately from the scooter
- Headlight for enhanced safety
- Ergonomic "Finger-Pull" throttle makes it easier for those with limited strength or dexterity to operate the scooter.
- Convenient free-wheel release knob
- Warranty: Lifetime on frame, 14 months on electric controller and drive train components, 6 months on batteries.

1P = 1-Pack Available

powered mobility

To order call toll free: 877.224.0946

drive™