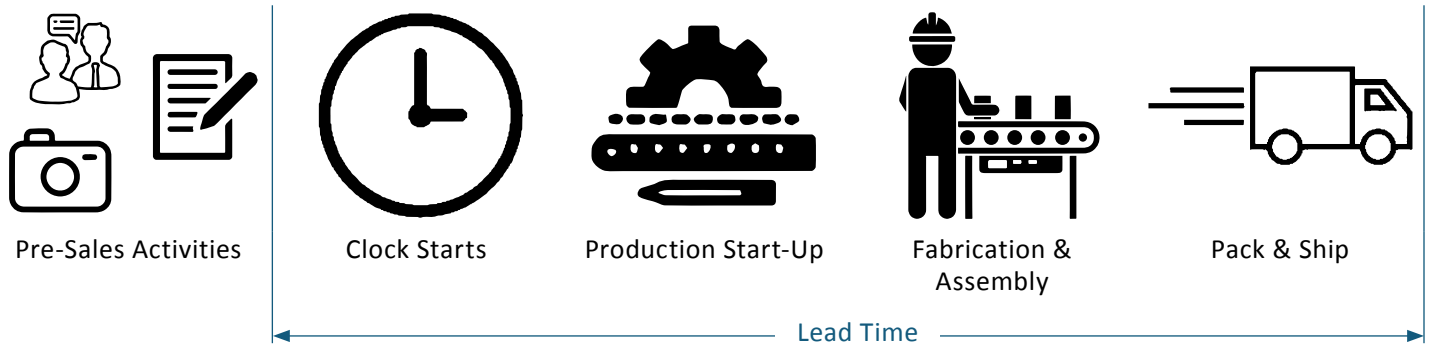


# HELIX CURVED STAIR LIFT

## EVALUATION/ORDER FORM

The Helix sales process requires strong cooperation between our dealers and the Harmar Helix team. Harmar provides an estimated “lead time” based on our production capacity and backlog. This time is calculated from the **Date of Signed Customer Drawings** to the **Date of Product Shipment**. Please be aware, the time from initial customer inquiry to Signed Customer Drawings can vary depending on timelines of the Pre-Sales Activities.



In order to quickly turn around quotes and drawings, a complete Evaluation Form and proper pictures must BOTH be submitted. On average, when submitted correctly, drawings can be turned around in 1-3 business days; however, incomplete information and improper pictures can delay this an additional 1-10 business days. Please review the following for our best practices for the pre-sale activity.

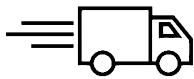
### Pre-Sale Checklist



- Pre-Sale Evaluation
  - Staircase: Landings, turns, ceiling, hand-rail/molding intrusions
  - User(s): Height, weight, sitting distance back to knee
  - Preferences: Exit direction top/bottom, side, color, hand control



- Complete Evaluation Form
  - Sketch
  - Product Information
  - User Info



- Pictures of Staircase - [harmar.com/project-image-upload](https://harmar.com/project-image-upload)
  - Markers: Every step, overlap, measuring tape, no telephoto, clear
  - Overall View: Wide, show doors, ceiling, landings

# HELIX CURVED STAIR LIFT

## EVALUATION/ORDER FORM

Quote  Order

Date: \_\_\_\_\_

Sales Representative: \_\_\_\_\_

Dealer Name: \_\_\_\_\_

Address: \_\_\_\_\_

City: \_\_\_\_\_ State: \_\_\_\_\_ Zip: \_\_\_\_\_

Phone: \_\_\_\_\_ Fax: \_\_\_\_\_

Email: \_\_\_\_\_

Shipping Method:  Pick up  Common Carrier

Account Number: \_\_\_\_\_

Projected Close Date: \_\_\_\_\_

Purchase Order Number: \_\_\_\_\_

Ship To Address: \_\_\_\_\_

Contact: \_\_\_\_\_

Phone: \_\_\_\_\_

Opportunity Reference / Project Name: \_\_\_\_\_

### SITE DETAILS

Indoor (standard)

Outdoor

### POWER SUPPLY (SOCKET) LOCATIONS

Top

Bottom

Mid-landings

### FLOOR CONSTRUCTION

Wood

Concrete

Tile

Marble

Granite

Steel

Other: \_\_\_\_\_

### LIST PLANNED MODIFICATIONS TO STAIRCASE AREA

Remove hand rails

Modify under floor heat system

Move/modify door at upper landing

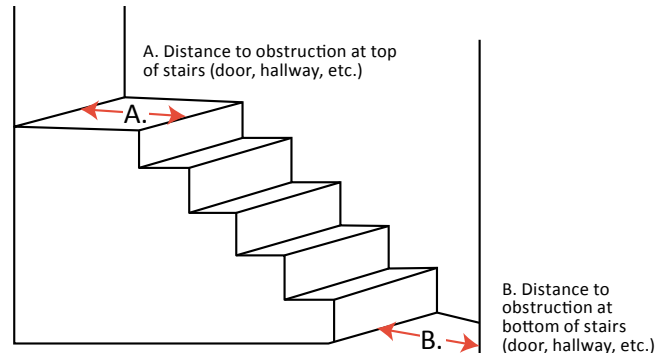
Move/modify door at lower landing

Other: \_\_\_\_\_

### DISTANCE TO NEAREST OBSTRUCTION AT TOP AND BOTTOM OF STEPS

A. \_\_\_\_\_ inches

B. \_\_\_\_\_ inches



Number of floors: \_\_\_\_\_

Rail length: \_\_\_\_\_

Total number of risers: \_\_\_\_\_

Stair width: \_\_\_\_\_ inches

Rise: \_\_\_\_\_ inches Run: \_\_\_\_\_ inches

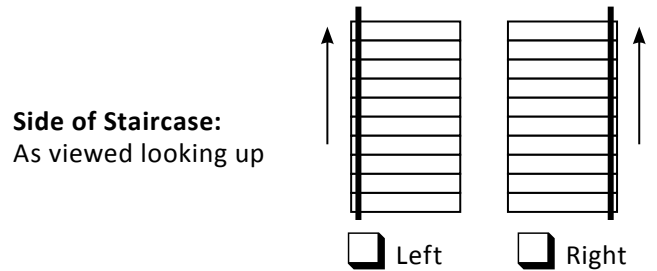
# HELIX CURVED STAIR LIFT

## EVALUATION/ORDER FORM

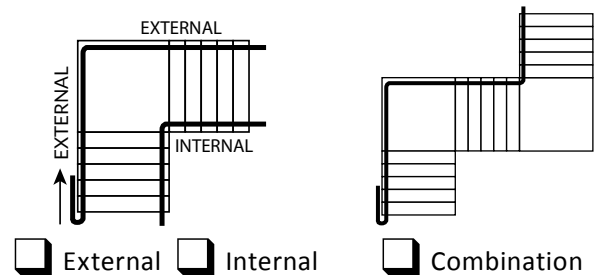
### OPTIONS

- Key switch on lift     
  Additional call/send     
  Additional charging station     
  Emergency stop  
 Overspeed governor (available to meet commercial code requirements)

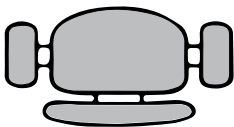
- 90° turn  
 Custom angle turn 0°-135°  
 180° turn  
 Custom angle turn 135°-180°  
 Double 90° turns  
 Double custom radius and angle (0°-135°)  
 Spiral (min 36" stair width required)  
 Sweep



### Turn Type



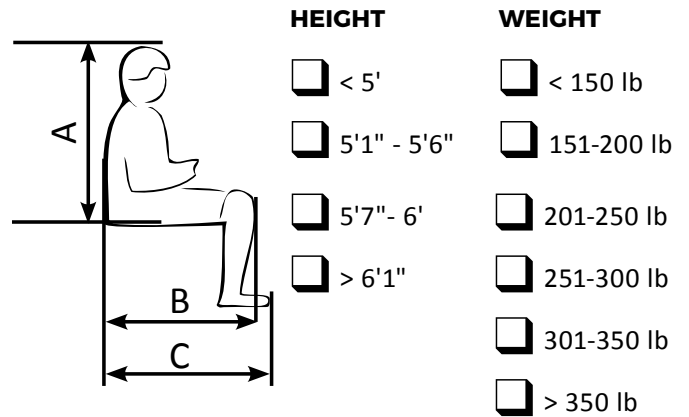
### CONTROL SWITCH

- Left hand     
 
 Right hand

### COLORS

- Rail color:     
  Beige     
  Black  
 Chassis color:     
  Beige     
  Black  
 Seat upholstery color:     
  Beige     
  Black

### SEAT CONFIGURATION



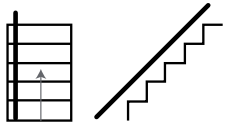
- A \_\_\_\_\_ inches  
 B \_\_\_\_\_ inches      Standard seat height 22.25"  
 C \_\_\_\_\_ inches

Bulkhead height from step at lowest point?

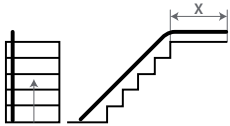
# HELIX CURVED STAIR LIFT

## EVALUATION/ORDER FORM

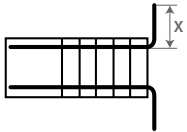
### TOP OF STAIRS



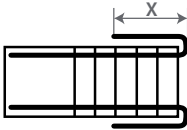
Standard incline finish



Top overrun  
Specify X: \_\_\_\_\_ inches

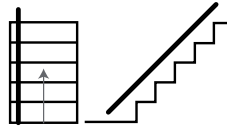


90° top park  
Specify X: \_\_\_\_\_ inches

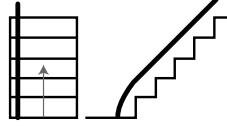


180° top park  
Specify X: \_\_\_\_\_ inches

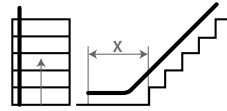
### BOTTOM OF STAIRS



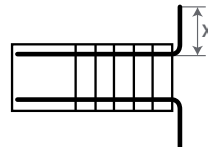
Standard



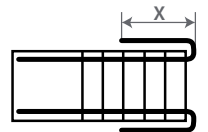
Drop nose



Bottom overrun  
Specify X: \_\_\_\_\_ inches



90° bottom park  
Specify X: \_\_\_\_\_ inches



180° bottom park  
Specify X: \_\_\_\_\_ inches

### NOTES/SKETCH

Because all of our products are custom built and painted to fit your specific needs and application, the final product is non-returnable. However, we will work with you to resolve any problems. Cancellations of orders must be done within 6-days of sign off in order to receive a full refund of the deposit and freight balances. If a cancellation is not received within 6-days then no refund on the deposit or freight balances can be given as the order will be in production.

I have read and understand the above:

Date: \_\_\_\_\_

Print Name: \_\_\_\_\_

Sign Name: \_\_\_\_\_